

# Colonial Bids For Transfer Of Air Routes

Applies to CAB in National Airlines Case

By MAX B. COOK  
Special Staff Writer

NEW YORK, Nov. 8.—Colonial Airlines today asked the Civil Aeronautics Board for all or part of the National Airlines' route if the board's coming investigation of the airline results in transfer of some of its routes to other lines.

The petition followed CAB's recent announcement of an investigation to determine whether National Airlines' route certificates and properties should be turned over to three other major airlines.

Colonial asks for permission to intervene on the basis that it long has sought most, or nearly all, of the routes in question.

Sigmund Janas, Colonial president, said in the petition, that "if the Board should deny Colonial's request to intervene, Colonial would have to object to the incorporation of the data resulting from the investigation into any other proceeding."

Mr. Janas questioned CAB's authority to authorize transfer of permanently certificated air routes over the objection of the air carrier holding such routes. He added, however, Colonial wasn't inclined to argue that matter.

Routes Listed  
Listing routes applied for, Mr. Janas adds that "it is obvious that, when one compares the routes applied for by Colonial and the routes granted Colonial, little has been done to assist that carrier in developing an intelligent route pattern."

Mr. Janas also pointed out that "granting Colonial's request to become a party to this proceeding would be in keeping with the board's own statement of its responsibilities and with the expressions of the President's Air Policy Commission and the Congress."

He added that the board must consider "competition to the extent necessary to assure the sound development of an air transportation system properly adapted to the needs of foreign and domestic commerce of the United States, of the Postal Service and of the national defense."

Indications are that some other major airlines may oppose any action to transfer National's business and routes on the basis that it "might establish a dangerous precedent under which any airline, at any time, might face identical action."

## Musical Show Star's Death Probed by Police

NEW YORK, Nov. 8 (UP)—An analysis of the vital organs of Victoria (Vicky) Schools was ordered today to determine what killed the 25-year-old musical comedy star.

Miss Schools, 56-star of the musical comedy "Best Foot Forward," was found dead in the bathroom of her apartment Saturday. Police said a bottle of pills marked "to relieve pain" was found beside her pajama-clad body. An autopsy failed to determine cause of death.

## Order Autopsy in Death Of California Divorcee

EL MONTE, Cal., Nov. 8 (UP)—An autopsy was ordered today to determine what killed a beautiful 24-year-old divorcee, Mrs. Martha Shirley Lipsey, missing for two months.

Her partially decomposed body was found yesterday by O. P. Allee of Long Beach, Cal., and W. O. Drouillard of El Monte, who said they were attracted to underbrush along the San Gabriel River by the barking of their hounds.

## French Actress Weds Louis Bromfield's Kin

BOULDER CITY, Nev., Nov. 8 (UP)—French actress Corinne Calvet, 23, and John Bromfield, 25-year-old film actor and a distant cousin of novelist Louis Bromfield, honeymooned today at Lake Mead Lodge.

They were married yesterday in a quiet ceremony at Grace Community Church. It was Miss Calvet's first marriage. Mr. Bromfield's second.

## Rita, Indian Prince Visiting Acapulco

MEXICO CITY, Nov. 8 (UP)—Rita Hayworth and Indian Prince Aly Khan were in Acapulco together today, according to a close friend of the movie star.

A. C. Blumenthal said he thought they took an automobile to the swank Pacific Coast resort. They had been seen during the week-end dining together in a local night club.

## Fire Kills 2 Children

FREEHOLD, N. J., Nov. 8 (UP)—Two children died yesterday in a fire which started when an oil stove overturned on the second floor of their home. Jerry Morton, 6, and his brother, Donald, 7, were killed and their mother, Mrs. Jesse Morton, was burned severely when she attempted to smother the flames.

## Name 'Woman of Year'

NEW YORK, Nov. 8 (UP)—Dr. Lillian M. Gilbreth, 70, of Montclair, N. J., mother of 11 children and grandmother of 15, was named "Woman of the Year" today by the American Woman's Association.

# 2 Greatest Civil War Generals Plot Battle For North China

By ARTHUR GOUL, United Press Staff Correspondent  
SHANGHAI, Nov. 8.—The battle for North China—now rapidly developing in the wake of total Communist victory in Manchuria—will pit the two greatest generals of China's civil war as opponents. They are Fu Tso-Yi, Nationalist commander for North China, and Lin Piao, the Communist military genius who won all Manchuria with its potential industrial riches.

It is doubtful that even the generals themselves know accurately just how much military strength each can throw into the battle. But it may be estimated that Gen. Fu has 150,000 men—many of them American-trained and partially American-equipped—stretched along the corridor from Peiping westward to Kweisui in Suiyuan province.

Now that all pressure against Lin Piao may be able to throw in 300,000 or more men at varied points along this battle line. These figures are more important than they might be in another war. The question of "face" figures largely in Chinese fighting. Pitched battle seldom occurs when unequal forces face each other unless the smaller force is hemmed in and cannot retreat. Otherwise, the inferior force usually withdraws and waits for another chance.

There are strong indications Gen. Fu will follow these tactics. He has made no extensive plans to defend Peiping—the city which was the seat of Chinese dynasties for so many centuries—and he almost certainly will not fight for the morale of the Nationalist government. And it might cause renewed demands for a peace settlement, a coalition government including the Communists, and the departure of Generalissimo Chiang Kai-shek.

Gen. Fu, by moving westward, would join with his long-time friends, Gens. Ma Pu-Fong and Ma Hung-Kwei, who are brothers, and their forces would bar the back-door to central China. But the Communists then probably would sweep southward over the ancient Great Wall of China into Hopei and join with other strong Red forces in Shantung province for a great push across the Yangtze River on a 700-mile front from the sea to the Szechuan province border.

Gen. Fu's forces then would threaten the Communist flank, as this push was made, and might strike at any weak point with the hope of cutting the Communist supply line from Manchuria.

Tientsin also may be expected to fall quickly to the Communists. It would be of greater military value to them than Peiping, since it would provide them a port for bringing in supplies from Manchuria by water.

Observers should not anticipate a major pitched battle which would decide at once the control of North China. Instead, there probably will be the usual shifting pattern of attack and counter-attack, direct thrust and flanking movement, advance and withdrawal, which has characterized the three years of Chinese civil war.

The Communists presently, buoyed up by their great victory in Manchuria, have the best of it. Great further advances may be expected of them.

But full control of North China is not likely to fall to them for many months, if at all.

There are no guns guarding the Peiping airfields. There are no fortifications outside the ancient wall. Gen. Fu himself has said several times he would move out of Peiping to the west at the first Red pressure. Peiping has minimum military significance, he says, and cannot be defended.

Psychological Value  
The psychological value of Peiping to the Communists should not be under-estimated, however. Its capture would be a hard blow to the morale of the Nationalist government.

Gen. Fu, by moving westward, would join with his long-time friends, Gens. Ma Pu-Fong and Ma Hung-Kwei, who are brothers, and their forces would bar the back-door to central China. But the Communists then probably would sweep southward over the ancient Great Wall of China into Hopei and join with other strong Red forces in Shantung province for a great push across the Yangtze River on a 700-mile front from the sea to the Szechuan province border.

Gen. Fu's forces then would threaten the Communist flank, as this push was made, and might strike at any weak point with the hope of cutting the Communist supply line from Manchuria.

Tientsin also may be expected to fall quickly to the Communists. It would be of greater military value to them than Peiping, since it would provide them a port for bringing in supplies from Manchuria by water.

Observers should not anticipate a major pitched battle which would decide at once the control of North China. Instead, there probably will be the usual shifting pattern of attack and counter-attack, direct thrust and flanking movement, advance and withdrawal, which has characterized the three years of Chinese civil war.

The Communists presently, buoyed up by their great victory in Manchuria, have the best of it. Great further advances may be expected of them.

But full control of North China is not likely to fall to them for many months, if at all.

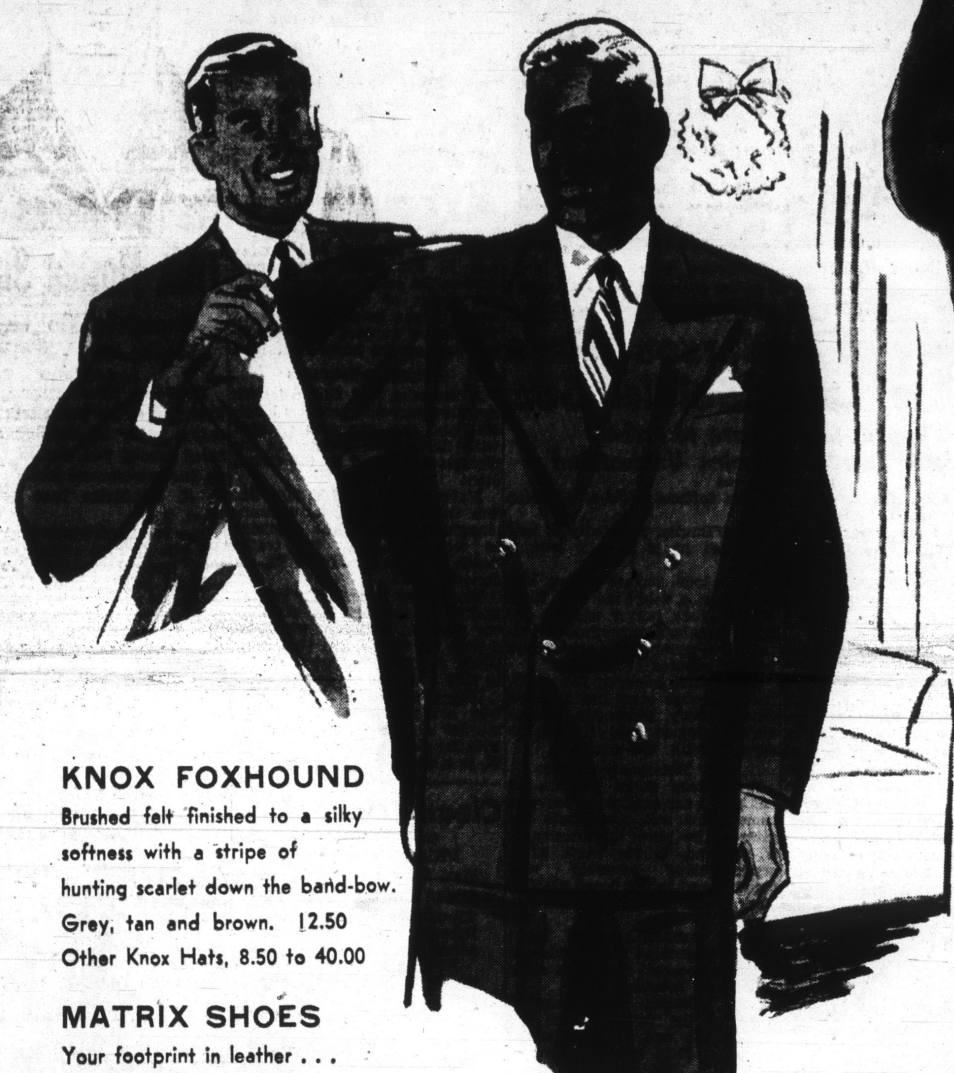
L. S. Ayres & Co. Franklin 4411

The Men's Store Complete on the Street Floor

It's a . . . .  
Kuppenheimer

When a man chooses a Kuppenheimer . . . he gets much more than the styling, fine tailoring and quality fabrics found in any good suit or coat. He wears it authoritatively . . . with dignity . . . good taste . . . the knowledge that in Kuppenheimer, he has made an investment in good appearance.

Kuppenheimer Suits, 85.00 and 95.00  
Kuppenheimer Outercoats, 70.00 to 145.00



KNOX FOXHOUND  
Brushed felt finished to a silky softness with a stripe of hunting scarlet down the band-bow.  
Gray, tan and brown. 12.50  
Other Knox Hats, 8.50 to 40.00

MATRIX SHOES  
Your footprint in leather . . . solid comfort in a black, full wing tip Norwegian calf . . . or a mahogany stitched tip, hand sewn, blucher. 18.95



Ayres' Men's Shop, Street Floor, South Building



# Jew Sh

## Israel Troo

Israel g the Jewish the British forces.

This evi goes includi now are en ish bases in capital of T

The Israeli informed that Israeli Moshe Shertok United Nations difficulties" at Israeli with Negev area of Mr. Shertok t The Israeli Britain also closures in American an have received dicating that from Commun is carrying a Iran

THE resig Abdul Hajr P inet was in Shah today, reported to lack of co-op ment in appr emment rega

Syria THREE mi the National day, provoki crisis.

Informed s ignations mig nation of Pre Bey's entire Soviet Un

SOVIET UN Timoshenko day that it m because lead States and E "a policy of war," Radio Timoshenko celebrating th of the Octobe Square that policy of our stance from warmongers."

Atlantic A FOREIGN in London seven-power ate a North A "most probab early in 1949

He indicat might be the ing, which United Stat Britain, Fra Netherlands Western

BRITISH county Mon commander Union nation defense talk occupation c many today. India

NATHU GODSE, who Gandhi, testi that the idea in planning a Indonesia DUTCH Ar ported today guerrillas and

STRAI SAYS.