

ALL RISKS Insurance
CAMERAS
It pays to call the
MUTUAL AGENT

Grain Dealers
Mutual Agency, Inc.
1740 North Meridian St.
Wabash 2456

SAID IT BEFORE
Some things bear repeating. Like the fact that almost all photographic equipment sells for about the same price. What makes one photo supply store better than others is what you get WITH your purchase. At Hoosier Photo Supplies, you'll always get a full measure of friendly service, cheerful answers to your questions and a willingness to show you things even if you're not ready to buy.

148 N. PENNSYLVANIA
HOOSIER PHOTO SUPPLIES, INC.

TO GET IN THE GROOVE
ROLL YOUR OWN
BRUNSWICK MINERALITE BALL

In Stock for
Immediate Delivery
On Convenient Payments

Save Up to \$40 With
MORTGAGE EXEMPTION
ON TAXES

BEFORE MARCH 1st get the deed to your home in your name. This entitles you to Mortgage Exemption on taxes. Pay off your present "contract" loan with a low-cost loan from Celtic—which places the deed in your name. You get the savings on taxes with a home loan from Celtic.

Marion County Home Only
CELTIC FEDERAL SAVINGS & LOAN ASSOCIATION
23 W. OHIO ST.

NOW SHE SHOPS "CASH AND CARRY"
Without Painful Backache

Many sufferers relieve nagging backache quickly, once they discover that the real cause of their trouble may be tired kidneys. The kidneys are Nature's chief way of taking the excess acids and waste out of the blood. They help most people pass about 2 pints a day. When disorder of kidney function permits poisonous matter to remain in your blood, it causes nagging backache, rheumatic pains, loss of pep and energy, getting up nights, swelling, puffiness under the eyes, headaches and dizziness. Irregular or painful elimination sometimes shows there is something wrong with your kidneys, so consider:

Don't wait! Ask your druggist for Doan's Pills, a stimulant diuretic, used successfully by millions for over 50 years. Doan's gives happy relief and will help the 15 million of kidney tubes flush out poisonous waste from your blood. Get Doan's Pills.

WHY STAND IN LINE TO PAY YOUR GROSS INCOME TAX?

Buy American Express Money Orders

for this purpose at any of the

following locations:

NORTH SIDE
G. J. IVERSON, 581 W. 26th St.
L. J. MYLAND, 2911 Clifton St.
L. A. HARRIS, 3219 Clifton St.
B. A. DICKSON, 5830 N. Harding St.
S. K. PERLIE, 2101 N. Harding St.
RUBY CHAMBERS, 637 E. 16th St.
JOSEPH BATTISTA, 2401 N. El St.
W. W. BILLESEN, 1227 N. El St.
MARY LEAVITT, 917 E. 30th St.
NICK KERR CO., 2416 College Ave.
BENNY SILVER, 2408 College Ave.
BONNER FURN. CO., 823 N. Sen. Ave.
MRS. M. E. LODGE, 825 E. 63rd St.
E. A. JACKSON, 2407 E. 38th St.
NORWALDO PHARM., 1412 E. 46th St.
S. CLARK, 2679 Northwestern Ave.
M. A. STEUERWALD, 217 W. 38th St.
A. M. ARNOLD, 2297 College Ave.

EAST SIDE
FRAUER'S, 605 E. Washington St.
L. BERNHART, 509 E. Washington St.
MRS. E. CONWAY, 226 N. State St.
LAW'S PHARMACY, 200 S. State St.
VICTOR PHARM., 2302 E. Wash. St.
E. G. PARKS, 5004 E. Washington St.
BROOK'S MOD. APT. CO., 5405 E. Wash.

EAST SIDE
HARRIET B. McFERRIN, 6015 E. 10 St.
VICTOR E. RICHART, 5101 E. 10th St.
PAUL WYAND, 3006 E. Michigan St.
J. B. FARMER, 2129 Brookside Ave.
ADAM E. BECK, 2351 Station St.
COHEN BROS. STORE, 2501 Station St.
B. G. TEETER, 2927 N. Sherman Drive
ROOSEVELT PHARM., 2101 Roosevelt
J. C. ILLINGWORTH, 2425 E. 16th St.

WEST SIDE
B. T. TEETER, Ben Davis
N. E. RICHART JR., 3006 S. Holt St.
J. C. PEACOCK, 1227 Howard Ave.
BORGES & CO., 2905 W. Wash. St.
E. L. STAFFORD, 2426 W. 16th St.
W. J. HENDERSON, 4406 W. Wash. St.

SOUTH SIDE
WM. H. LOSSIN, 1424 S. East St.
T. A. STOKES, 1333 Madison Ave.
C. F. GIER, 2230 Shelby St.

DOWNTOWN
FAIR STORE, 311-325 W. Wash. St.
E. F. WASSON & CO., Wash. & Mer.
L. S. AYRES & CO., Wash. & Meridian

Urge Overtime, 45-Hour Week To Cut Prices

Economists Support Baruch, Green Plan
By FRED W. PERKINS

WASHINGTON, Jan. 29—Many practical economists agree that if all the country's manufacturers went on a 45-hour week, paying time-and-a-half for five hours overtime, the incomes of nearly 13 million workers would be substantially increased and more goods would be produced which might drive some prices down.

The 45-hour proposal, made before congressional action, is supported by both Mr. Perkins and Mr. Perkins.

AFI President William Green and Bernard Baruch, is now favored by the National Association of Manufacturers.

But some union leaders do not agree with Mr. Green. They are holding out for straight wage boosts.

Earnings Hit Peak
The U. S. Bureau of Labor Statistics reports that in December weekly earnings of the nearly 13 million production workers in the nation's factories reached an all-time high average of \$52.51. This was because wages are higher than ever before and average weekly hours were 41.1, involving a small amount of premium pay for overtime.

If 45 hours a week had been put in by all these workers, the average pay including overtime would have been around \$61.

The December figures are above those for January, 1942, the peak of the war effort, because of higher basic wages. The average working week then was 45.4 hours and the average pay in all manufacturing was \$47.50. Hours are down now, but hourly pay is up.

Steel Supplies Short
Don Montgomery, head of the Washington office of the CIO United Automobile Workers, said: "Our members probably are not averaging 40 hours a week because the plants cannot get enough steel."

"The 45-hour plan might be applied in textile manufacturing and some other industries, but not in automobile manufacturing until there is more basic material."

Harvey W. Brown, president of the International Association of Machinists, whose 600,000 members work largely in metal-using plants depending on steel, also opposed the plan.

"If reports we receive on bottlenecks in the steel industry are accurate," he said, "President Green's plan couldn't work until steel capacity is expanded."

Murray Opposes Plan
Philip Murray, President of the CIO and of the United Steelworkers, has said he "didn't think much" of the Green suggestion.

How about steel production? U. S. Steel Corp. says: "The principal steel-producing subsidiaries of United States Steel are operating their plants around the clock."

The NAA's industrial relations department described Mr. Green's proposal as "a more constructive approach to the inflation problem than a third round of wage demands."

Chinese Crash Still 'Mystery' to Pilot
PEIPING, Jan. 29 (UP)—Carl Wiss, 28, Chicago, pilot of a Chinese air liner which crashed at Mukden Jan. 20 with a loss of 10 lives, said today he still was "mystified" at the cause of the accident, which happened shortly after takeoff.

Investigators still puzzling over the wreckage also have been unable to determine the cause of the crash.

RUBBER FLOOR TILE
For offices, storerooms, kitchens, bath-rooms. Custom designed to suit your floor design specialists. Easy terms, immediate service.

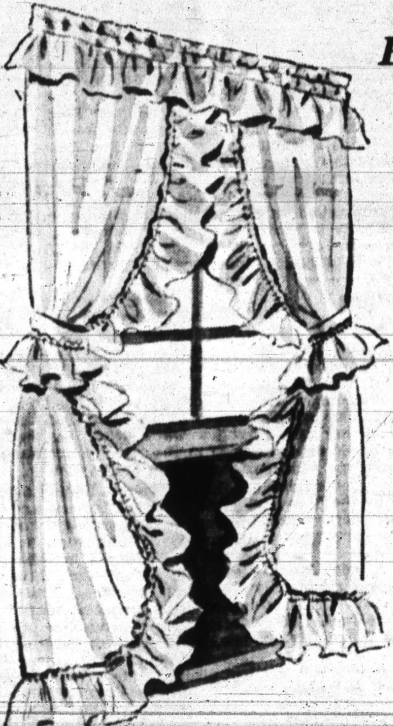
Hoosier Home Supplies
235 S. Meridian, FR-1392

AYRES' DOWNSTAIRS STORE

Shop Early Tuesday Thru Saturday!

Sale! White Organdy Curtains

CLOSED MONDAYS
SHOP TUESDAY THRU SATURDAY
9:00 TO 5:25



Single Ruffle... 81" Length

Mail and Phone (RI. 9941) Orders Filled

L. S. Ayres & Co., Downstairs Store
Indianapolis 9, Indiana

Please send me the following white organdy curtains at \$4.48 pair:

Quantity	Length	Ruffle

Name

Address

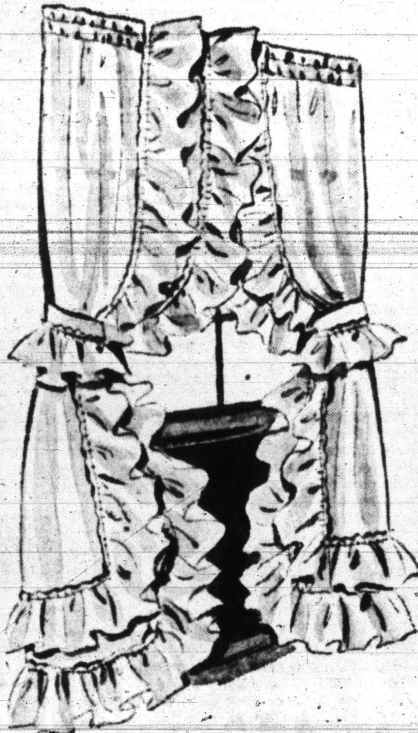
City..... State.....

☐ Cash ☐ Charge ☐ C. O. D.

Famous Manufacturer's Close-Out!

- Permanent Finish, Need No Starching!
- Extra-Fine Count for Longer Wear!
- Your Choice of Single or Double Ruffle!
- In Three Desirable Lengths!

\$4.48
Pr.



Double Ruffle... 72" and 81" Lengths

From a famous maker... permanent finish cloud-white organdy curtains... such proud beauties at such an exceptionally low price! Each finely-tailored detail looks "high-priced." Easy to launder... need no stretching. And your choice of new double or regular single ruffle! Add their sparkling freshness to every room.

CURTAINS—
Downstairs at AYRES'

Seconds In Heavy Printed Rufftex
36-inch Width **69c** yd.
Natural drapery color Rufftex in a charming fern pattern... very slight seconds. Give your living room a "new look" for Spring—and for so much less. Fine for long-wearing, easy-hanging draperies.

Famous "Panda" Cushion Dot Curtains
Ivory Shade Marquisette **\$1.98** Pair
Thick, Fluffy Cushion Dots
Useful 31x81-inch Size
Lovely, budget-wise cushion dot curtains... it costs so little to add a bright look to your rooms! They're nicely tailored, trimmed with pert ruffles... in room-harmonizing ivory shade.

Smart Lace Curtain Pairs
90 Inches Long **\$2.98** Pair
Lovely lace curtains in a soft ecru shade that blends with any color scheme. Soft, charming all-over pattern... of long-wearing weave. Budget priced for thrifty home-makers.

9x12 All-Wool Rugs

Select a new long wearing rug for your home at our day-in, day-out thrift prices! Made by a nationally known mill, they're outstanding for both beauty and quality.

9'x12' All-Wool Mottled Axminsters

\$39.50

Pleasing mottled pattern all-wool Axminster rugs with a soft mayve background. Ideal rugs for living room, dining room, bedroom, office. Blend well with any style or period.

9'x12' All-Wool Persian Design Axminsters

\$54.50

Real values in quality and beauty. Your choice of two attractive Persian designs in lovely Camel or dashing red backgrounds. Perfect for the living room, dining room.

RUG DEPARTMENT—Downstairs at AYRES'

Beautiful New Lamps At Thrifty Prices

Table Lamps
22 inches Overall! **\$5.98** Each
Gold Finish Trims!
15-in. Rayon Shades!

LAMP DEPARTMENT—
Downstairs at AYRES'

Bronze Finish Reflector Floor Lamp

Three Candles! **\$10.98** Each
Bowl Reflector!

Reflector floor lamp that adjusts to reading or room lighting, with three-candles and bowl reflector. Of beautiful subdued bronze finish with new decorative base design. Price includes base only.

Swing Arm Bridge Lamp..... **\$10.98**
To match floor lamp. Base only.

THURSDAY

SEAR
ROEBUCK & CO.
Farm
Saturday, J
BAKE S
Conducte
Builders'
Pitts
Methodist

PHOE
COFF
Serve PHO
and you serve
Specially
for Dr
Wate

PHOE
COFF
DRIP GRIND
PHOE
COFF

HOOSIER CO

PROPE
MANAGE
♦ Dwelling
♦ Apartment
♦ Store Ro
♦ Office Bu
We secure tenants, n
and collect rents. Rep
lance supervised,
and income monthly

Fletcher
Compa
R. W. Corner Pennsylvania
INDIANAPOLIS,
NEWER FEDERAL WE
PAPER FEDERAL CREDIT FINAN

Indi

E
OPEN EV
Our
Janu
No
Tren
A G

HUN
STORE H
SAT
EFRO