



NATIONAL 24-HOUR FORECAST SUMMARY: Early morning temperatures will be in the 70s along the Atlantic and Gulf coasts tomorrow. Minimum readings over the rest of the area east of the Rockies will be in the 60s. Storms over the country will be few and scattered in the coming 24 hours, weather experts say. Showers are the outlook along the coast from North Carolina to New England, also for Illinois, the central plains and in the Rockies. (See affected areas.)

Partly cloudy is the schedule for most of the U. S. Only the upper Ohio valley and southern Florida will be overcast. (Consult the inset map to determine cloudiness for your area.)

Fog and low clouds will form over the California coastline as

cool northerly winds flow around the Pacific high pressure cell. Weather fans will notice today's FOTOCAST has no fronts. Forecasters point out pressure over the U. S. is flat. No sharp outline of temperature difference is in prospect. For these reasons no fronts or lines along which opposing air flows clash is indicated.

Lowest temperatures expected tomorrow morning include Duluth 56; Milwaukee 58; Ft. Worth 61; Chicago and Detroit 62; Cleveland and Memphis 63; Atlanta 64; St. Louis and Kansas City 65; Boston 67; Washington 68; New York and Philadelphia 70 degrees.

Small, solid arrows on the FOTOCAST show the flow of air around high and low pressure cells as well as wind directions over the country.

Official Weather
UNITED STATES WEATHER BUREAU
—July 10, 1947—

Sunrise 5:06 Sunset 8:14	
Precipitation 24 hrs ending 7:30 a. m.	0.15
Total precipitation since Jan. 1	21.56
Deficiency since Jan. 1	87

The following table shows the temperature in other cities:

City	High	Low
Atlanta	82	62
Boston	70	48
Chicago	78	62
Cincinnati	78	62
Cleveland	78	62
Denver	82	64
Detroit	78	62
Evansville	78	62
Fl. Wayne	78	62
Fort Worth	80	62
Indianapolis (city)	78	62
Indianapolis (sub.)	80	62
Kansas City	80	62
Los Angeles	80	62
Miami	82	62
Minneapolis-St. Paul	80	62
New Orleans	80	62
New York	80	62
Oklahoma City	80	62
Omaha	80	62
Pittsburgh	80	62
San Antonio	80	62
San Francisco	80	62
St. Louis	80	62
Washington, D. C.	80	62

\$18 Million Outlay On Sewers OK'd

Work Starts Soon On 12-Year Program

A construction schedule for the first half of the city's \$35 million sewer modernization and improvement program had approval today.

The schedule sets out an expenditure of \$18 million over a 12-year period. Construction will begin as soon as designing is completed and bonds are issued.

Amounts to be spent each year are: \$3,608,356 for 1947-48, including \$1,600,000 for rehabilitation plant improvements; \$1,981,559 for 1949; \$2,214,855 for 1950; \$1,526,010 for 1951; \$1,427,040 for 1952; \$2,236,302 for 1953; \$1,212,399 for 1954; \$1,533,628 for 1955; \$856,428 for 1956; \$1,168,819 for 1957, and \$1,068,501 for 1958.

Submitted by the Moore & Owen engineering firm, the schedule sets these dates for construction of the various projects.

For 1947-48—Fall creek interceptor between 36th and 37th sts.; 34th and 37th st. storm sewer; Lock creek interceptor; Bean creek interceptor extension; Pogue's run interceptor and storm relief sewers from New York st. to White river.

For 1948—Interceptors between Belmont ave. and Morris st., and Werman ave. to Eagle creek, and storm relief sewers and laterals in Ritter ave. and Sherman dr.

For 1949—Interceptors serving the Belmont ave.-Washington st. area, and New York st. storm relief sewers and laterals.

For 1950—Broad Ripple and Wardship relief sewers, South Fall creek interceptor between 21st st. to 25th st., and connecting Mays Hill to the city disposal plant.

For 1951—South Fall creek interceptors to 21st, 24th and 30th sts.; Boyd st. storm relief sewers, serving Boyd, Allen and Ringgold sts.; storm relief sewers near Delaware and 10th sts. and from 24th st. to Fall creek; storm relief sewers in Oliver ave., Addison st. and Riverside dr.; storm relief sewers in 19th st.; Highland ave., 16th st. and Riley ave., and storm relief sewers and laterals.

For 1952—Fall creek to 38th st. interceptor; additional Broad Ripple relief sewers; Adler st. interceptor; Eagle creek branch interceptors and Birchwood ave. storm relief sewers and laterals.

For 1953—N. Illinois st. relief sewers and laterals.

For 1954—East White river to Merrill and interceptors, and W. 11th st. storm relief sewer and laterals.

For 1955—Southern ave. interceptor and 12th st. storm relief sewer and laterals.

For 1956—22nd st. relief sewers and laterals; Rader st. storm relief sewers and laterals; storm relief sewers from Kitley and Lowell aves. to Pleasant run; storm relief sewers from Harding and Market sts. to White river, and Julian ave. storm sewer and laterals.

For 1957—Storm relief sewers from Virginia ave. and East st. to Pogue's run and from La Salle st. and English ave. to Pleasant run; Pogue's run interceptor beyond Michigan and Rural sts. storm relief sewers and laterals.

For 1958—Storm relief sewers from Virginia ave. and East st. to Pogue's run and from La Salle st. and English ave. to Pleasant run; Pogue's run interceptor beyond Michigan and Rural sts. storm relief sewers and laterals.

For 1959—Storm relief sewers from Virginia ave. and East st. to Pogue's run and from La Salle st. and English ave. to Pleasant run; Pogue's run interceptor beyond Michigan and Rural sts. storm relief sewers and laterals.

For 1960—Storm relief sewers from Virginia ave. and East st. to Pogue's run and from La Salle st. and English ave. to Pleasant run; Pogue's run interceptor beyond Michigan and Rural sts. storm relief sewers and laterals.

For 1961—Storm relief sewers from Virginia ave. and East st. to Pogue's run and from La Salle st. and English ave. to Pleasant run; Pogue's run interceptor beyond Michigan and Rural sts. storm relief sewers and laterals.

For 1962—Storm relief sewers from Virginia ave. and East st. to Pogue's run and from La Salle st. and English ave. to Pleasant run; Pogue's run interceptor beyond Michigan and Rural sts. storm relief sewers and laterals.

For 1963—Storm relief sewers from Virginia ave. and East st. to Pogue's run and from La Salle st. and English ave. to Pleasant run; Pogue's run interceptor beyond Michigan and Rural sts. storm relief sewers and laterals.

For 1964—Storm relief sewers from Virginia ave. and East st. to Pogue's run and from La Salle st. and English ave. to Pleasant run; Pogue's run interceptor beyond Michigan and Rural sts. storm relief sewers and laterals.

For 1965—Storm relief sewers from Virginia ave. and East st. to Pogue's run and from La Salle st. and English ave. to Pleasant run; Pogue's run interceptor beyond Michigan and Rural sts. storm relief sewers and laterals.

For 1966—Storm relief sewers from Virginia ave. and East st. to Pogue's run and from La Salle st. and English ave. to Pleasant run; Pogue's run interceptor beyond Michigan and Rural sts. storm relief sewers and laterals.

For 1967—Storm relief sewers from Virginia ave. and East st. to Pogue's run and from La Salle st. and English ave. to Pleasant run; Pogue's run interceptor beyond Michigan and Rural sts. storm relief sewers and laterals.

For 1968—Storm relief sewers from Virginia ave. and East st. to Pogue's run and from La Salle st. and English ave. to Pleasant run; Pogue's run interceptor beyond Michigan and Rural sts. storm relief sewers and laterals.

For 1969—Storm relief sewers from Virginia ave. and East st. to Pogue's run and from La Salle st. and English ave. to Pleasant run; Pogue's run interceptor beyond Michigan and Rural sts. storm relief sewers and laterals.

For 1970—Storm relief sewers from Virginia ave. and East st. to Pogue's run and from La Salle st. and English ave. to Pleasant run; Pogue's run interceptor beyond Michigan and Rural sts. storm relief sewers and laterals.

For 1971—Storm relief sewers from Virginia ave. and East st. to Pogue's run and from La Salle st. and English ave. to Pleasant run; Pogue's run interceptor beyond Michigan and Rural sts. storm relief sewers and laterals.

For 1972—Storm relief sewers from Virginia ave. and East st. to Pogue's run and from La Salle st. and English ave. to Pleasant run; Pogue's run interceptor beyond Michigan and Rural sts. storm relief sewers and laterals.

For 1973—Storm relief sewers from Virginia ave. and East st. to Pogue's run and from La Salle st. and English ave. to Pleasant run; Pogue's run interceptor beyond Michigan and Rural sts. storm relief sewers and laterals.

For 1974—Storm relief sewers from Virginia ave. and East st. to Pogue's run and from La Salle st. and English ave. to Pleasant run; Pogue's run interceptor beyond Michigan and Rural sts. storm relief sewers and laterals.

For 1975—Storm relief sewers from Virginia ave. and East st. to Pogue's run and from La Salle st. and English ave. to Pleasant run; Pogue's run interceptor beyond Michigan and Rural sts. storm relief sewers and laterals.

For 1976—Storm relief sewers from Virginia ave. and East st. to Pogue's run and from La Salle st. and English ave. to Pleasant run; Pogue's run interceptor beyond Michigan and Rural sts. storm relief sewers and laterals.

For 1977—Storm relief sewers from Virginia ave. and East st. to Pogue's run and from La Salle st. and English ave. to Pleasant run; Pogue's run interceptor beyond Michigan and Rural sts. storm relief sewers and laterals.

For 1978—Storm relief sewers from Virginia ave. and East st. to Pogue's run and from La Salle st. and English ave. to Pleasant run; Pogue's run interceptor beyond Michigan and Rural sts. storm relief sewers and laterals.

For 1979—Storm relief sewers from Virginia ave. and East st. to Pogue's run and from La Salle st. and English ave. to Pleasant run; Pogue's run interceptor beyond Michigan and Rural sts. storm relief sewers and laterals.

For 1980—Storm relief sewers from Virginia ave. and East st. to Pogue's run and from La Salle st. and English ave. to Pleasant run; Pogue's run interceptor beyond Michigan and Rural sts. storm relief sewers and laterals.

For 1981—Storm relief sewers from Virginia ave. and East st. to Pogue's run and from La Salle st. and English ave. to Pleasant run; Pogue's run interceptor beyond Michigan and Rural sts. storm relief sewers and laterals.

For 1982—Storm relief sewers from Virginia ave. and East st. to Pogue's run and from La Salle st. and English ave. to Pleasant run; Pogue's run interceptor beyond Michigan and Rural sts. storm relief sewers and laterals.

For 1983—Storm relief sewers from Virginia ave. and East st. to Pogue's run and from La Salle st. and English ave. to Pleasant run; Pogue's run interceptor beyond Michigan and Rural sts. storm relief sewers and laterals.

For 1984—Storm relief sewers from Virginia ave. and East st. to Pogue's run and from La Salle st. and English ave. to Pleasant run; Pogue's run interceptor beyond Michigan and Rural sts. storm relief sewers and laterals.

Fire Signs Aim To Save Invalids

DULUTH, Minn., July 10 (U. P.)—

Kenneth MacDonald, retired firefighter, got to thinking recently about the many helpless persons who died in fires simply because firemen didn't know they were in the buildings.

He got an idea. Why not have a special marker on all houses where invalids lived? Firemen could spot the marker and make a special search for the bedridden person.

He told the Duluth Chamber of Commerce fire prevention committee about the idea.

County welfare social workers today began nailing the markers up on invalids' homes.

'Moderate' Drinkers Eats Breakfast First

CHICAGO, July 10 (U. P.)—

Moderate drinking consists of a cocktail or two a day, but not before breakfast, a medical consultant said today.

The consultant was "called in" by the Journal of the American Medical association to answer a doctor's query. The doctor wanted to know how many drinks a moderate drinker could drink and still stay moderate.

The consultant was unidentified.



INNERSPRING MATTRESS
Steel coil spring filled. Easy Terms \$29.95

Ideal LINCOLN FURNITURE CO.
7326 227 W. WASH. ST.

A Better Figure
your very first treatment

7 different methods insure results in every treatment.

A Lady Lost
29 Pounds and 5 Inches Off Hips

In only 10 treatments. See how easy it would be to lose 5 or 10 pounds and 2 or 3 inches in spots.

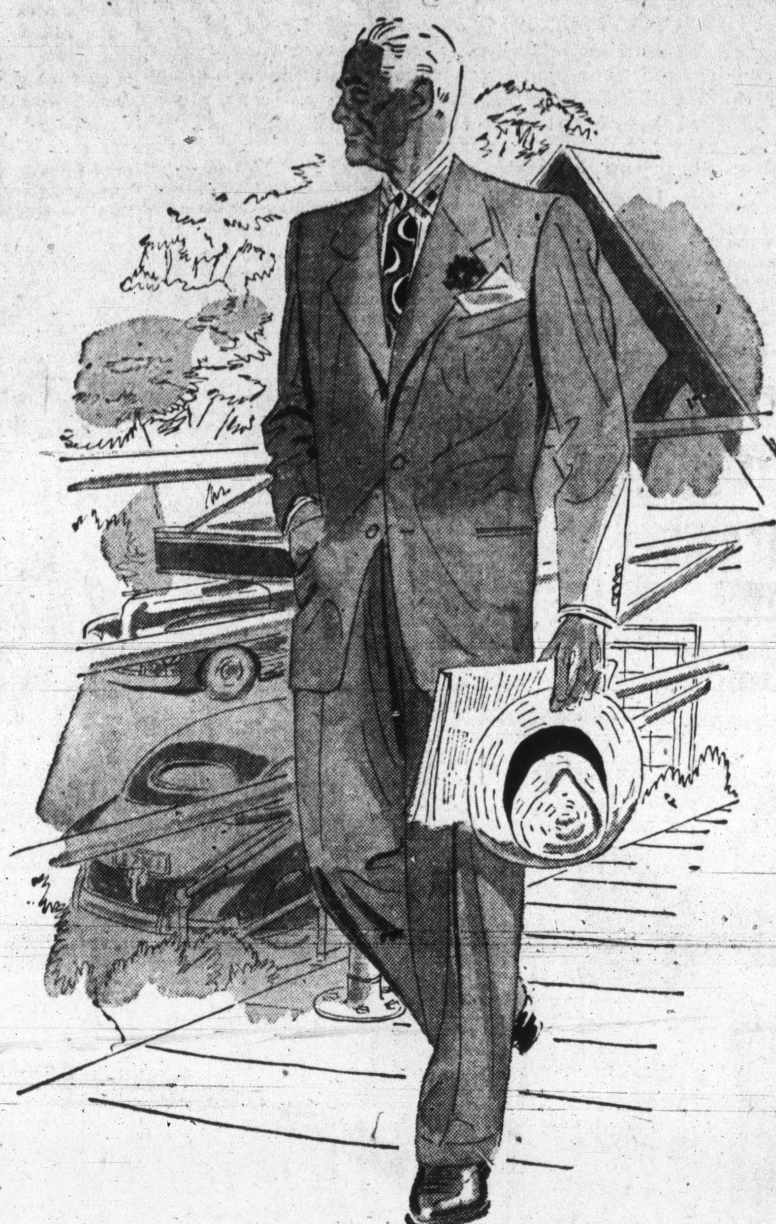
Summer Special
2 Weeks Complete Course \$12.00 Only

Including Our Famous Slimming Massage

TARR SYSTEM
511 ROOSEVELT BLDG.
Rt 1184

Block's

DOWNSTAIRS STORE



Beverly

TROPICAL WORSTED SUITS

29.50 to 35.00

Summer heat is just something other people talk about when you're wearing one of these pure all-wool tropical suits. They'll give you refreshing comfort now and till the last warm days of autumn. Get yours now while there's a wide selection of sizes in single and double-breasted styles... you'll have an enjoyable summer!

SUMMER SLACKS—6.95, 7.95

Cool, crisp rayons and blended fabrics make these slacks first choice for men who want to make summer a pleasure. They're swell for leisure or sports. Tailored with pleats and zippers. Waist sizes, 28 and up.

ALL-WOOL SPORTS COATS—15.95

These smart all-wool coats are values that are hard to believe. Wear them with your favorite slacks. They're well-tailored, the patterns are smooth, and the price hard to beat.

JUST UNPACKED!
TWO-TROUSER
TROPICAL WORSTED SUITS

BLOCK'S CLOSSES SATURDAY AT 1:00

Open Monday through Friday from 9:30 to 5:00

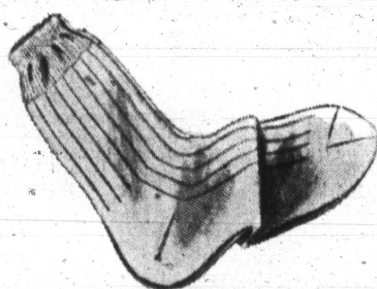
Block's DOWNSTAIRS STORE

Complete Men's Shops

RELAX IN COOL COMFORT IN A Short-Sleeve Sport Shirt

Heat-chasers for the hot days ahead! Comfort-styled short sleeved sport shirts you can relax in—in unconfined freedom! Smartly tailored in fine quality plain or fancy patterned cotton or plain color slub rayon fabrics. And, only 2.98! Sizes small, medium, medium-large, and large.

2.98



MERCERIZED COTTON SOX

6x1 ribbed styles of summer-soft and absorbent mercerized cotton! Smartly, comfortably styled to go with you everywhere! White or pastel shades of blue, sand or maize to choose from. Men's sizes 10 to 12.

39c



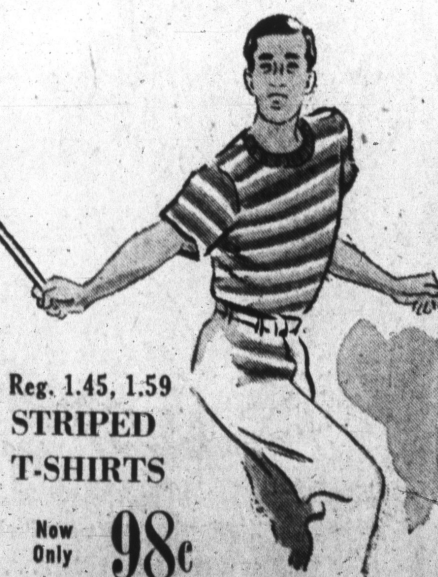
NEW SHIPMENT! MEN'S KNIT UNION SUITS

1.29

Styled for Serviceability! Available in Sizes 38-48

Better quality flat knit union suits... styled with two-button shoulders, designed for comfort and serviceability, and priced at only 1.29!

Men's Furnishings, Downstairs



Reg. 1.45, 1.59 STRIPED T-SHIRTS

Now Only 98c

Enjoy the complete comfort of these striped T-shirts! They're of soft, absorbent cotton knit, styled with comfortable-fitting crew neck... and, they're yours at a saving for only 98c! Sizes small, medium, large.

Men's Furnishings, Downstairs