

★ Dee has them all! Famous Make RADIOS

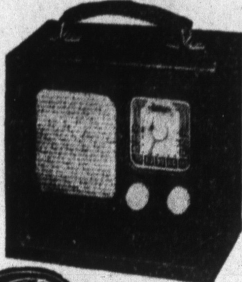
• GE • PHILCO • ZENITH • BENDIX
• RCA • CROSLLEY • EMERSON • FADA
• TELE-TONE • STROMBERG-CARLSON
AND MANY OTHERS

—Immediate Delivery—Priced from \$17.95 to \$300
They're tops for indoors
or outdoors!



RCA Portable
RADIO
\$59.95

CROSLLEY
Portable Radio
\$44.95



Amazing New
"TRAV-LE" Superheterodyne
PORTABLE
\$19.95
EASY TERMS

Pay as little as
\$1.00 a Week

Dee
JEWELRY CO.
Claypool Hotel Bldg.
18 N. ILLINOIS ST.

France Center Of Arms Traffic

Clandestine Activity
Is Widespread

By PAUL GHALL

Times Foreign Correspondent
PARIS, July 10.—France for some
time has been rumored to be one
of the most active centers of clandestine arms traffic in the world.

Confirmation has now been
provided by the discovery of widespread arms-smuggling in this country by the
leftist Jewish organization Irgun
Zvai Leumi.

According to police experts, it
will take years to unearth the immense quantities of clandestine arms hidden here.

In the meantime these hidden
arms will continue to feed a gigantic
arms traffic, which lately seems
to be concentrated on supplying
Greek guerrillas and Palestine Jews.

Arms come into these secret
French depots through three separate channels.

The first stocks came from French
army supplies—hidden, back in 1940
from the invading Germans.

The second came from arms parachuted
to the French underground and never returned to regular army
depots.

The third consists of arms robbed
from German troops or hidden by them when they collaborated in 1944.

Copyright, 1947, by The Indianapolis Times
and the Chicago Daily News, Inc.



DOWNSTAIRS at WASSON'S



Just In! New Shipment of Our
Dark Background
Chambray Dress

5⁹⁸

Pastel Stripes on Dark Grey

A gay striped chambray dress to take
you through summer—deftly designed
with a matched stripe top, two large
skirt pockets. A dress that's a real
laundry-saver! Pink or blue stripes on
dark grey! Sanforized. Sizes 12 to 18.

Mail, Phone—RI. 7411—Orders Filled



Special Purchase!
SIMONE
GARTER BELTS

1²⁹

Regularly 1.75 to 3.98

Wide or narrow width garter belts—
trimmed or tailored—broken sizes 25 to 30!
Ideal for summer comfort — year round
comfort.

SWIM SUIT CLEARANCE!

REGULARLY 3⁹⁸
4.98 and 5.98

REGULARLY 4⁹⁸
7.95 and 8.95

ENTIRE STOCK OF MISSES'

Swim suits priced to clear! Broken sizes 32 to 40. One
and two-piece styles in prints and solid colors.



VALUE PACKED
CHILDREN'S
PLAY TOGS

Girls' Pin-Checked
shorts in blue and
white. Zipper
placket. Turn-
back cuffs. Sizes
7 to 14.

1.79

Tots' Navy Painted
overalls with
painted trim.
Sizes 3 to 6.

1.59

CHILDREN'S WEAR
Downstairs at WASSON'S

Cotton Seersucker

Zipper
Housecoat

4⁹⁸

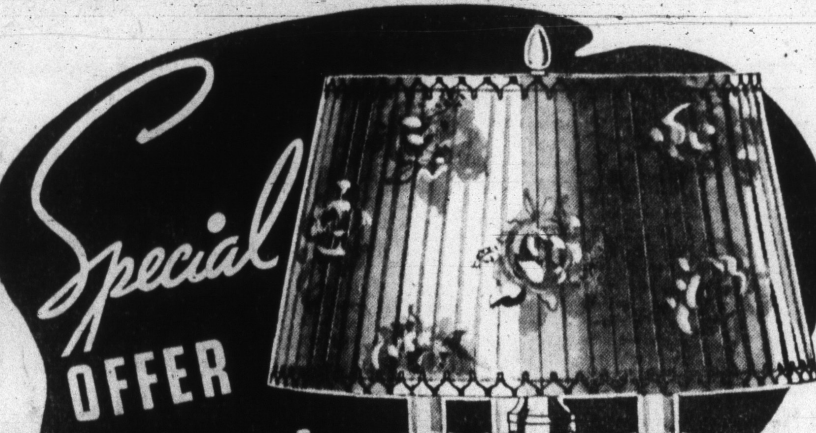
Regularly 5.98!

A "dream" of a housecoat for
busy mornings—just zip up!
Dainty ruffles trim the square
neckline—the skirt is cut wide
and full. Maize, rose or blue.
Sizes 12 to 20.

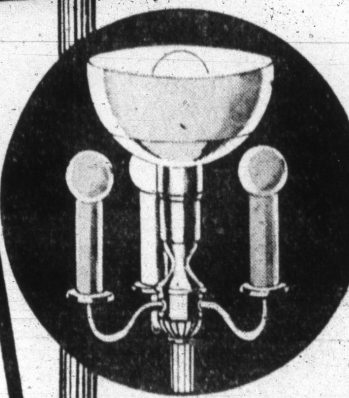


LINGERIE,
Downstairs at
WASSON'S

★ DEE presents this startling offer
to Open 100 New Accounts



Special
OFFER
**7-WAY
Lamp**
Amazingly Low Price
\$9.45
Pay Only 45¢ DOWN...
50¢ A WEEK!



Imagine getting
a beautiful, smart-
looking 7-way LAMP
for only \$9.45!

It is nothing short of sensa-
tional! Furthermore, you
can buy and enjoy one of
these fine lamps by paying

45¢ DOWN!
50¢ A WEEK!

Come see them.

★
Don't wait. Be here early!
These 7-way lamps will sell
fast! These lovely lamps
are suitable for every home
and will also make an ex-
cellent wedding or anniver-
sary gift.

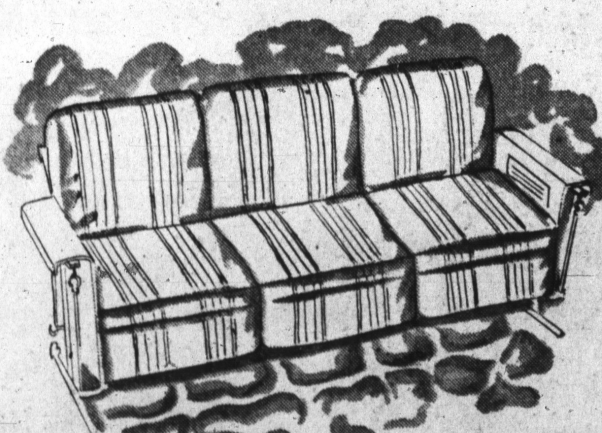
★
Shop—Friday
or Early Saturday
Morning!
—WE CLOSE
at 1 P. M. SATURDAYS
During the Summer
Months!

NITE LITE
Through
TRANSPARENT

- Glass bowl reflector,
having three stages of
indirect light.
- Heavy reed tubing
with gleaming ivory &
gold finish.
- 3 Candle fixture has a
switch lighting each
candle separately and
all together.
- Individual Nite-Lite
switch on base.
- Neatly tailored floral
shade with harmoniz-
ing trimmings.
- 6" Genuine Transo
insert.

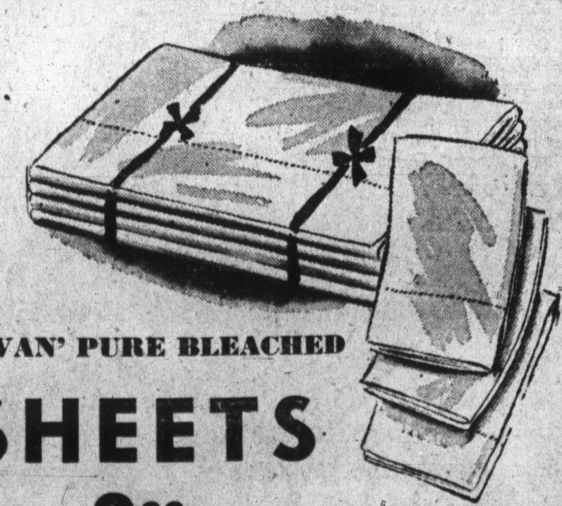
Immediate Delivery!

★ **Dee**
JEWELRY CO.
18 N. ILLINOIS ST.
Claypool Hotel Bldg.



6-Cushion Striped Glider
REPLACEMENT SETS \$10⁹⁵

Sturdy and attractive—waterproof drill glider replacement sets
lacquered to a glaze! Fits any standard size glider—will give you
years of service! Green, Red, Blue or Wine With Stripes.



'SYLVAN' PURE BLEACHED

SHEETS

2³⁹
Each

81x99
Size

First quality pure bleached sheets—torn to size—contain no
dressing! Made to give you service at a budget price!

72x108 "Sylvan" Twin
Size Sheets.....2.39 each

Look

WASHINGTON
If there are a
discs sent up
Dr. F. Zwicky
for moon me-
August issue.
is not far off.
says "we still
scientific expe-
Dr. Zwicky
for moon me-
able to distin-
timid stars w
He says we're
Jupiter.
Until now,
"doomed to th
mosphere, he
celestial obje-
there are "ma-
tures in space
be 180,000 deg
We've neve
Zwicky explai
light" but ma-
objects in the
By shootin
up their way,
that celestial
results."

Will Launch
DR. ZWICKY
First, we'll
the V-2's bein
carry scientifi
next step, he
rockets after

Other

WASHINGTON
myself that t
to make a ki
somebody.

Like Walter
Then I pu
"Tain't go
guage far mor
steel industry
pend. And h
American fro
The senato
in to see wh
manufacture
production.
Some in de
up to \$300 a
closing their
troubles to t
Strictly te
master, a one
years in the
Tall, spare
ting over the
an erudite wi
(and my spee
He even
dialogue went

Shortages
THE STEEL
rate of 85,000
million tons
time year of
demanded Se
how much lo
"Nine mor
led to believe
would last u
(He cleared
shortage tod
Senator El

Home

CHICAGO
won't seem li
If the inv
will be more
Everything
is on display
the Internati
ing forth.
For instan
complete wit
stools—and a
play, it ough
guests have t
aing.

No Need
PRICE of
cheap enoug
at home.
On displa
slept on.
And to pr

Dollar

HOLLYW
accused of
Hollywood
lots of progr
So today
Hollywood's
Let's tak
fundamental
One of o
for a story.
the roles. Bu
mind is tha
It isn't th
boy kicking
football gam
the had nap
the right ne
golf score b
birds head f

Just Che
IF YOU
you'll find i
seen. But
different. So
studio.

The story
takes it to
it goes thro
the master
It's the m
into the ma

We,

IT WOUL
the membe
tative town
clubs out of
How mar
bridge club
they joined
and were af
"Stay-at-
HOW M
the meetings
they'll be m
How mar
auxiliary gro