

Traffic Deaths For 2 Months 17% Under '46

4510 Persons Killed,
Council Reports

CHICAGO, March 31 (U.P.).—The national safety council announced today that 4510 persons were killed in traffic accidents during the first two months of this year.

The February figure was 2140. The council said the total was encouraging, despite its size, for three reasons:

ONE—The two-month toll is 17 per cent below the figure for the first two months of 1946. It is 19 per cent under the same period in 1941, when traffic deaths hit an all-time high.

TWO—The decrease was accomplished despite greater automobile mileage.

THREE—The mileage death rate (deaths per 100 million vehicle miles) in January was the lowest for any January since such records have been kept.

Perfect records were reported by 257 cities for February. The largest was Kansas City, Mo., with a population of 399,200. The second largest was Richmond, Va. (240,000), and third was Omaha, Neb. (223,800).



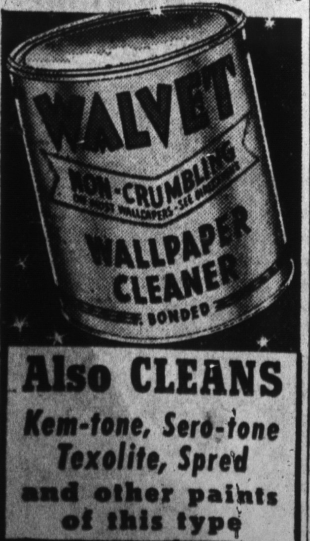
MADE BY CROWN CORSET CO.—N.Y.



Deafened People May Now Hear Clearly

Science has now made it possible for the deafened to hear faint sounds. It is a hearing device so small that it fits in the hand and enables thousands to enjoy sermons, music and friendly companionship. Accepted by the Council on Physical Medicine of the American Medical Association. This device does not require surgery, battery power, or any wire, case or garment to bulge or weigh you down. The tone is clear and powerful. So made that you can adjust it yourself to suit your hearing as your hearing changes. The makers of Beltone, Dept. 1946, 1450 West 19th St., Chicago 8, Ill., are so proud of their achievement that they will gladly send free descriptive booklet and explain how you may get a full demonstration of this remarkable hearing device in your own home without risking a penny. Write Beltone today.

EASY TO USE...

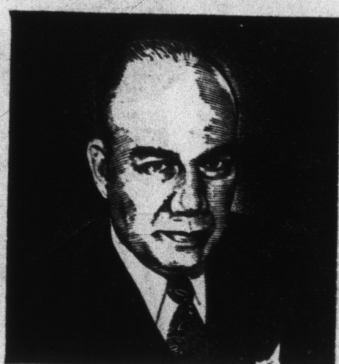


Also CLEANS
Kem-tone, Sero-tone
Texolite, Spread
and other paints
of this type

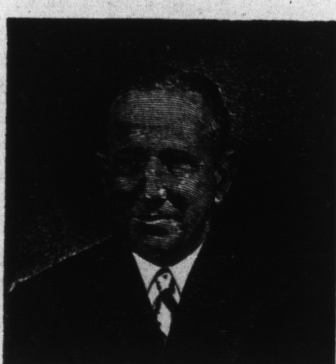
THESE MEN ARE THE BUILDERS OF THE SURPRISE CAR OF THE YEAR



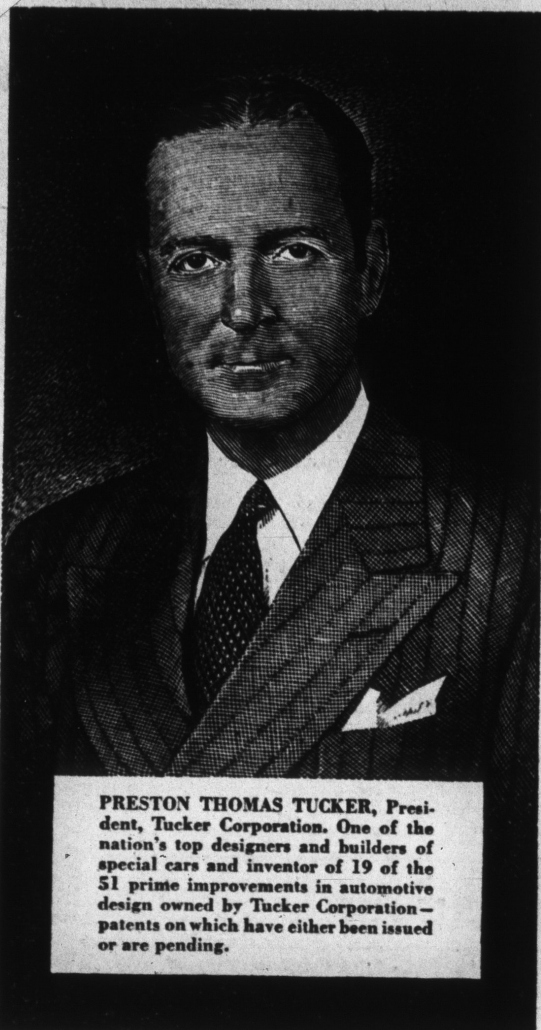
HANSON AMES BROWN, Executive Vice President. Formerly Vice President General Motors Corporation in charge of all Canadian operations.



K. E. LYMAN, Development Engineer. Nationally known as an engineering consultant with long experience in Bendix and Borg-Warner organizations.



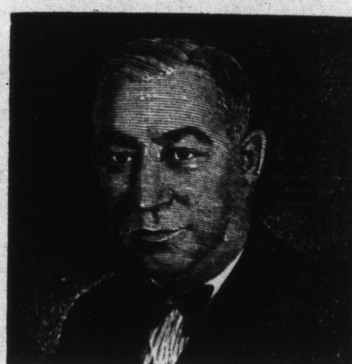
BEN PARSONS, Vice President and Chief Engineer. Former consulting engineer and international authority on simplification and fuel injection.



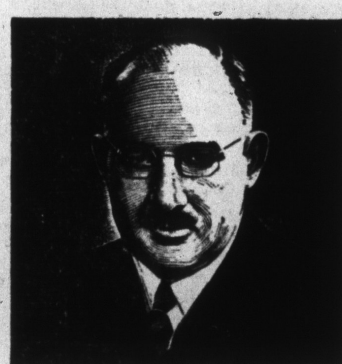
PRESTON THOMAS TUCKER, President, Tucker Corporation. One of the nation's top designers and builders of special cars and inventor of 19 of the 51 prime improvements in automotive design owned by Tucker Corporation—patents on which have either been issued or are pending.



FRED ROCKELMAN, Vice President and Director of Sales. Formerly President Plymouth Division of Chrysler Corporation and General Sales Manager Ford Motor Company.



LEE S. TREECE, Vice President in Charge of Manufacturing. For many years Production Executive of Ford Motor Company.



HERBERT MORLEY, Director of Materials. Formerly Plant Manager of all Detroit manufacturing units Norg Division, Borg-Warner Corporation.

THE SURPRISE CAR of the Year is built on engineering principles developed by Preston Tucker in fifteen years of designing special cars for the Speedway with the late Harry Miller. In these years Miller Specials won eleven of fifteen annual Speedway classics at Indianapolis. When war came Mr. Tucker went to Washington and from his storehouse of tested designs developed engineering features in motorized vehicles which helped bring victory.

Today Mr. Tucker heads a group of executives who are honored names in the automotive industry. Each is a specialist in his field... each has left his imprint on the methods of manufacture and distribution of motor cars today.

Now these men are making automotive history all over again.

They're building a car that will be the inspiration of automotive engineers for years to come... building it in the largest, most modern automotive plant in the world.

Later this very year, this exciting new car will be ready to drive. Then you'll know why so many top automotive executives have been eager to pool their experience and talents in building it.

For the Tucker '48 is the car every motorist has been waiting long years to see. It's finer, more luxurious than the most expensive cars, yet priced in the medium field. It's tomorrow's styling, here today... 128-inch wheel base yet only five feet high from road to roof. Economical, too, gets 30 to 35 miles per gallon at moderate speeds.

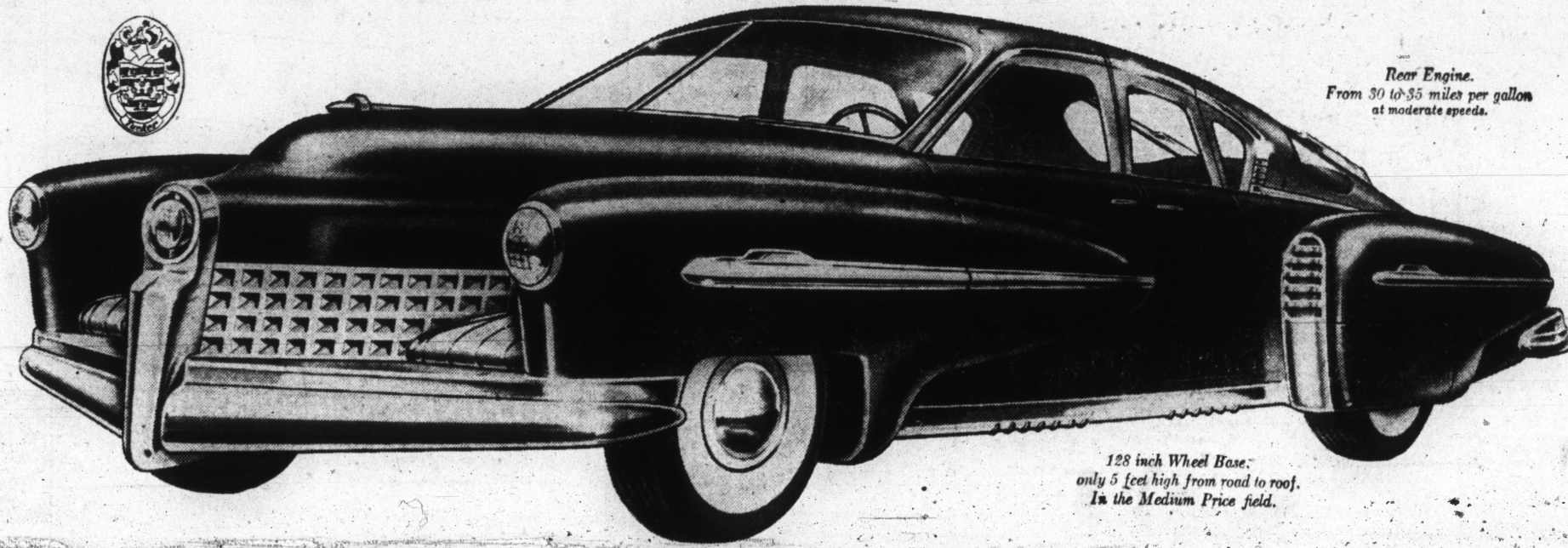
When you step behind the wheel of this exciting new car you'll get

the motoring thrill of your life. For nothing on the road today can match the smooth, flowing power of the Tucker 150-horsepower rear engine, the easy-chair comfort of the unique Tucker individual wheel suspension, the twelve exclusive safety features which make this the safest car in the world for driver and passengers.

Be among the first to give the Tucker '48 a workout. You owe it to yourself to get acquainted with a car so completely new in line and design... so completely proved in engineering principles... that it will still be a leader many years and thousands upon thousands of miles from now.

Address All Inquiries to Executive Department

TUCKER CORPORATION, 7401 SOUTH CICERO AVE., CHICAGO 29, ILL.



Rear Engine.
From 30 to 35 miles per gallon
at moderate speeds.

128 inch Wheel Base.
only 5 feet high from road to roof.
In the Medium Price field.

HERE'S WHY THE TUCKER '48 IS YEARS AHEAD!

Rear Engine Drive. A flat opposed 6 cylinder, 150-horsepower engine. Electronic high frequency ignition, measured fuel injection. Higher power-weight ratio than any volume production automotive engine ever built. No fumes, less noise, greater flexibility, faster starting, trouble-free operation, safety.

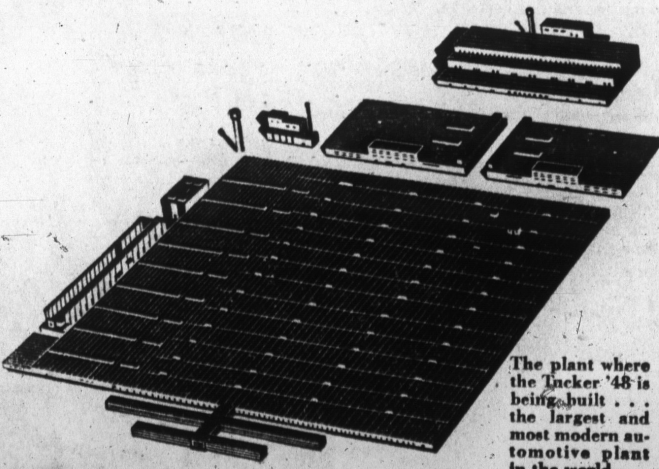
Now FLOWING Power. Flowing power—sure as a mighty stream—moves direct from engine to wheels through double hydraulic torque converters. No conventional transmission or clutch... or conventional differential... either. And power goes to both drive wheels. So it's impossible to be stalled by one wheel spinning on ice.

Precision Balance. The unique Tucker design distributes weight to give maximum safety, maximum power transmission and hairline steering and driving control. As a result, the Tucker '48 is the safest car ever built. Only a car with rear engine can achieve this precision balance—for years the goal of all automotive engineers.

Another First for Tucker. One reason Tucker '48 gives you more car for your money is the Tucker Cost Control Program, which plans and budgets in advance every corporate activity including engineering, manufacturing, administrative and sales, both from time and money standpoint. This Program, established before production for the first time by J. D. Stearns, Tucker Controller, formerly of Cadillac Div., General Motors, combines with elimination of over 800 parts of conventional cars to give you a new standard of value.

New Individual Wheel Suspension. The NEW Tucker suspension makes conventional spring suspension obsolete. Each wheel is cushioned by its own resilient action arm, actually eliminating shock instead of simply softening it. And when the brakes go into action the Tucker wheel suspension clamps the wheels to the ground for greater traction and safety. Tested for years on America's Speedway.

Single Disc Aluminum Brakes. No conventional brake bands to wear... no adjustments to make, ever. These utterly new type hydraulic, air-cooled brakes are 63% more effective... eliminate vibration chatter... stop the car without skidding, even on ice... the same type brakes that stop fast-landing military planes.



The plant where the Tucker '48 is being built... the largest and most modern automotive plant in the world.

Tucker '48

COMPLETELY NEW... Yet with Engineering Principles COMPLETELY PROVED

MONDAY
Co
Wou
With
Whi
Juris
Mean

NEW YORK
Idea of a special
congressional
Two Repu
ander Smith
It is describ
but actually w
tional powers.
The system
tore Ferguson
different than
trict Court J
proposed last
publicized sin
tunity, in spee

Respe
Judge Knox
and more res
federal bench
much support
of bitter oppo
cated a nat
courts that w
with labor dis

Much of the
around his
courts should
contracts, whe
between oppos
broke down.
The Fergus
fines the cou
federal law an
meaning of
adopted. The
settlement of
ments untouch
But once a
if any dispute
meant—or if a
live up to its
labor court v
dence, decide
for its decis

Three-
The Fergus
differs from
other respect
tablish. In a
three-member
Two would
would be a ju
matters. Judge
had 12 judges
would have he
ton, New York
Francisco.

The court
reached the
corporates the
of experts in
law.

Judge Knox
cial labor cou
presented his
the New York
tion, several
yers raised o

Raise Se
Unions had
because of th
in fact, comp
collective ba
But Donald
leading supp
arbitration, e
ture from an
He feared
endiar would
petty disagree
the course of
This, he felt,
important pol
beyond their r
And when
ments arose,
major strikes,
that the cour

See
"Such a pe
most inevitab
hostility of o
cisions were u
the other, and
ciding cases
economic and
the judges in
of established
nomic justice,"

"A labor co
of decisions,
come offensive
both business
leaders and
litical attacks
it."

"This objecti
lies against
permanent p
stead of vol
members selec
is not met in
bill.

Power
The extent
opposition to
proposals con
that if his p
duced in its
not have been
But even t
that Senators
were planning
servers felt th
interpret law
would not tak
ing process—
the discussion
Judge Knox
court have p
decisions by
by receiversh
standard lega

Use
The bill no
mit use of th
It also provid
union official
court's order
serving as an
agent of his
official, for th
be banned fr
pany official.

In three re
posed by Se
Smith would
nied to the f

HOME
RADIO
New radio: L
LANE
CHICAGO
2828