

Stilwell's War Pilot Will Scatter Ashes On 'Last Mission'

Simple Funeral Services Set For Wednesday; Army Grieves Passing of 'Soldier's Soldier'

SAN FRANCISCO, Oct. 14 (U. P.)—The ashes of Gen. Joseph W. Stilwell, hero of the 1942 retreat from Burma, will be scattered over the Pacific ocean Wednesday after simple, private funeral services at his home, San Francisco.

Gen. Stilwell, 63, 6th army commander, known to members of the armed forces over the world as "Vinegar Joe," died quietly in his sleep Saturday at Letterman general hospital. He had failed to survive an operation for a liver condition 10 days before.

Yesterday, as guns at the San Francisco Presidio boomed out a final salute, Gen. Stilwell's widow announced that members of the family would gather at "Llanfair," the general's Carmel residence 86 miles south of here, to participate in last rites.

"Last Mission"
At the same time, a C-47 plane piloted by Maj. Emmett J. Thielen, Detroit, who carried Gen. Stilwell over the China-Burma-India "hump" more than 50 times during the war, will leave San Francisco with the ashes.

Maj. Thielen was asked by Mrs. Stilwell to fly this "last mission" because of the general's great affection for his pilot.

With only crew members aboard, the C-47 will fly low over "Llanfair," then head west into the sun and over the Pacific ocean. There, Gen. Stilwell's ashes will be scattered on the sea.

Eisenhower Speaks for Army
Messages of condolence poured in from all over the world and Gen. Dwight Eisenhower, in a message transmitted through the war department, said that the whole army joined him "in grieving the passing of this able, valiant soldier whose devotion to duty was a constant inspiration to all privileged to serve with him."

Another message from Generalissimo Chiang Kai-shek, with whom Gen. Stilwell broke during the war, said that the "Chinese people will mourn the loss of a friend." The generalissimo said that Gen. Stilwell "ably led Chinese and allied forces in the difficult days" of the war.

Other members of Gen. Stilwell's family, besides his widow, include two sons, Joseph Jr. and Benjamin, and three daughters, Mrs. Nancy Easternbrook, Mrs. Winifred Cox and Miss Allison Stilwell.

ICC RATE RULING TO BE REVIEWED

Other Appeals Announced By Supreme Court.

(Continued From Page One)

the six New England states, and 33 western railroads.

The order was issued by the I. C. C. in May 1945. It set up a single scale for so-called "class" freight rates ordering a 10 per cent cut in rates in the south and western states lying east of the Rocky mountains.

A special three-judge federal court sitting at Ithaca, N. Y., upheld the I. C. C. mandate last spring, but expressed the opinion that questions involved should be settled by the supreme court. Because of the litigation, the order has never gone into effect.

Only about 4 per cent of the nation's freight moves under the "class" rates, but this rate revision was regarded as a first move toward equalizing all freight rates.

For years southern states have contended that the present rate structure gives an unfair advantage to northern manufacturers and is a stumbling bloc to industrialization of the south.

Monopoly Breakup Outlined
New York, Delaware, Indiana, Pennsylvania, Maryland, Michigan, New Jersey, Ohio and Wisconsin, appealing the case, contended that the I. C. C. lacked authority to order a rate revision because the railroads' business already is "highly profitable" in the area where the increase would take place.

They said that the I. C. C. failed to find "that maintenance of the present class rates threatens a rate war or is otherwise likely to jeopardize the financial ability of the railroads to provide adequate and efficient transportation service."

The 33 western railroads said the I. C. C. order "is generally recognized as the most momentous and far-reaching in the history of the commission" and "marks a clean break" with the principles of rate-making that have applied "through the country for generations."

On the Pullman case, the justice department and several prospective buyers of the Pullman business asked the high court to reverse an order of the U. S. district court for eastern Pennsylvania approving the sale of the sleeping car business.



National 24-Hour Forecast

SEE FOTOCAST IN NEXT COLUMN

It will be cool weather in New England and the Middle Atlantic states. Light frost will form over inland areas of New England and the upper Hudson valley. Western New York and Pennsylvania will be partly cloudy, but clear weather is forecast elsewhere in these states and most of the east.

Rain will turn to snow in Wyoming and there will be showers extending eastward in the cold front zone with snow flurries in the mountainous sections and in North Dakota. (See affected areas of border states on map.) Lower Michigan will have light rain.

The eastern half of the U. S. will enjoy mostly clear weather while the high pressure ridge extending from New England to Louisiana continues to influence conditions east of the Mississippi. Southeastern Florida will have showers where pictured on the FOTOCAST and the Gulf coast sector will have partial cloudiness.

There will be a continued flow of warm, moist air moving northward on the western side of the high dominating the east. This air flow will cause the partly cloudy skies indicated for the

OFFICIAL WEATHER

United States Weather Bureau

(All Data in Central Standard Time)

—Oct. 14, 1946—

Sunrise 6:58 Sunset 5:08

Precipitation 24 hrs. ended 7:30 a. m. 2.00

Total precipitation since Jan. 1 25.42

Deficiency since Jan. 1 6.76

Station High Low

Atlanta 64 42

Boston 61 43

Chicago 60 39

Cincinnati 61 43

Cleveland 61 43

Denver 58 36

Evansville 60 36

Indianapolis 60 38

Kansas City 60 38

Los Angeles 68 43

Miami 84 71

Minneapolis-St. Paul 55 38

New Orleans 70 54

New York 63 48

Oklahoma City 70 44

Omaha 56 40

Pittsburgh 58 39

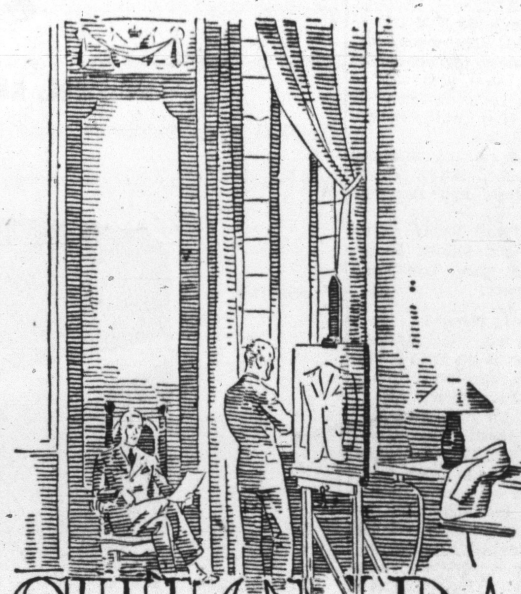
St. Louis 74 47

San Antonio 78 52

San Francisco 74 48

Washington, D. C. 60 43

STRAUSS SAYS— Tradition with a touch of Tomorrow



FASHION PARK

FASHION PARK makes Topcoats of uncopyable distinction.

Fabrics—even ultra-fine fabrics—are available to a number of tailoring concerns. Nor are skilled workers any one's exclusive possession.

But—in the Field of Designing—Fashion Park has a deep and honored tradition and prestige—outstanding throughout the Clothing Arts.

In deference to good taste, Fashion Park may refrain from speaking of members of their own designing staffs—as men set apart through the gift of genius—but we can in truth—and with propriety make that statement.

It is the blend—issuing from the rare talents in the Designing Rooms and Tailoring Staffs—devoted to fine textures—that give these coats that cosmopolitan expression—that note of character—that Touch of Tomorrow....

Fashion Park Topcoats are available at various prices—at around \$68 there is special choosing.

STRAUSS
SAYS:

ROCKINCHAIR
100% WOOL
PLAID SHIRTS—
(as illustrated)
in red with deep
red and green
plaid—white with
red and green—
14.50



ROCKINCHAIR

gained a richness of experience in the men's wear field. Their WOMEN'S SHIRTS are masterpieces of tailoring—they cut and sew fine fabrics with skilled hands—the sleeves are set in carefully—with well set shoulders—the collars perfectly tailored. In the Women's Specialty Shop is a good selection of ROCKINCHAIR SHIRTS—in fine cottons, flannel finishes and wools—in a variety of fabrics and colors to suit every shirt need. Sizes 10 to 20.

STRAUSS

L. STRAUSS & CO., INC.
The Women's Specialty
Shop—Is on the Third Floor

ROCKINCHAIR
FLANNEL FINISH
cotton shirts—
in monotone checks
of yellow and grey—
blue and yellow—or
beige and blue.
6.50

ROCKINCHAIR
COTTON SHIRTS
include plain
colors, plaids,
checks and stripes—
in fine shirtings
and chambrays.
4.00 to 6.50

L. STRAUSS & COMPANY, INC., THE MAN'S STORE