

**Jordan Cabinet Co.**  
Immediate Delivery on All Size  
Built-in Kitchen Cabinets  
SEE OUR LARGE DISPLAY  
8 North Delaware St.

## CIRCULAR HOUSE READY FOR 1947

Mass Output Scheduled  
Then, Says Firm Head.

By Science Service  
WICHITA, Kas., Oct. 10. — Mass production of the round, pre-fabricated Fuller houses with the triangular rooms is scheduled for 1947, Herman Wolf, president of Fuller Houses, Inc., has announced.

Financing their manufacture has delayed the program. The unconventional nature of the house makes necessary a longer period of examination and study before financing terms can be arranged, he stated. He expects, however, to receive approval for loans under federal housing agency and the veterans administration.

### Resembles Umbrella

This circular house, largely of aluminum and plastic, resembles somewhat a large umbrella with sidewalls dropping from the outer edges of the umbrella cover. It is supported by a center steel mast carrying a radiating framework near its top.

When outdoor framework of the first type of the Fuller house were made, Mr. Wolf stated, certain "bugs" were discovered which are now being corrected. These do not alter the general structural plan of the building, but do provide a larger kitchen, an entrance to a bedroom direct from the center hall, and other changes to promote convenience.



**DRS. EITELJORG  
SOLTIS & FRAY  
DENTISTS**  
8½ E. WASH. ST.  
Between Meridian St.  
and Marolt's Shoe Store  
Tel. MA-0583—Hours 8 to 5



Pepsi-Cola Company, Long Island City, N. Y.  
Franchised Bottler: Pepsi-Cola Bottling Co. of Indpls, Ind.

## Served Together in Philippines



Old acquaintances . . . Brig. Gen. Clifford Bluemel, Ft. Harrison commander, and S. Sgt. Peter Moskalick of Indianapolis were fellow prisoners of the Japs.

## Fort Commander, Sergeant Recall Days in Jap Prison

A brigadier general and a staff sergeant, who fought the Japs in the Philippines until they were captured after the fall of Corregidor, met this week at Ft. Harrison and talked over old times. Brig. Gen. Clifford Bluemel, post commander, was inspecting headquarters company of the station complement when he noticed a unit citation with two oak leaf clusters on the blouse of a soldier. He knew he had found a fellow fighter of the Japs because the defenders of Bataan wear that insignia. The soldier was S. Sgt. Peter Moskalick of Indianapolis who served under Gen. Wainwright on Corregidor until its capture. Gen. Bluemel was the last commander to surrender on Bataan and is a survivor of the Bataan death march. The inspecting party waited while the two soldiers discussed their treatment while prisoners. Sgt. Moskalick entered the army at Ft. Harrison in 1928 and was a gunner with the 3d field artillery under Gen. Bluemel when the latter was a lieutenant colonel here in 1932. Sgt. and Mrs. Moskalick live at 334 E. Iowa st.

## SENATORS KEEP EYE ON WAR GRAFT QUIZ

WASHINGTON, Oct. 10 (U. P.).—The senate war investigating committee today awaited developments of a federal grand jury inquiry before deciding whether to renew efforts to question Rep. Andrew J. May (D. Ky.) on his dealings with the Garsson munitions combine.

The grand jury action in the Garsson case starts today with impounding of a special venire to consider evidence unearthed by the F. B. I. A justice department official said it provided the basis for "six and

## PREFERS ROAST BEEF TO FANCY DIAMOND

BOSTON (U. P.).—The world's largest emerald-cut diamond—a 127.03-carat stone worth \$650,000—was exhibited in a jewelry store here, but it failed to tempt a policeman who was on guard.

Asked whether he "wouldn't like to have that?" he replied to a woman, "Naw, lady, gimme a good roast beef dinner any day."

possibly seven alleged violations of the federal code, including conspiracy, bribery and theft." The committee may decide to recall Mr. May if he appears before the grand jury.

## SENIOR CLASS ELECTS SEARS

Washington High Plans  
Alumni Chorus.

John Sears is new president of the Washington high school senior class. Other officers are James Thornbrough, vice president; Kathleen Wilham, secretary; Roy Jacobs, treasurer; and Wesley Jones, sergeant-at-arms. Doormen are: Lawrence Berkman, William Hamilton, William Kiken-

call, John Schuster and Bob Wolfe. Luella Stoneking, Patricia Miller, Marilyn Tirmerstein and Eva Mae Klakamp are the committee chairmen. The class sponsor is Mrs. Geraldine Johnson.

### Cub Club Formed

A new Washington high group, the Cub club, composed of home room representatives at school, will hold meetings the first Monday of every month. Marilyn Dunn is in charge until new officers are elected.

Representatives to date are: Mary Houser, Doris Payne, Charlotte Morris, Betty Woody, Joyce Ciesler, Arden Sneed, Doris Maddox, Lo-raine Hider, Patricia Lowery, Ferrell Baxter, Christina John, Betty Erick, Anna May Eila, Patricia Mitchell, Beverly Albright, Gene Thompson, Alice Lawson, Wilma Bell, Juanita Deik, Glenn Roach, Mary Ann Guller, Donna Nichols, Sue Land, Jo Ann

Dickerson, Jean Smith, and Nancy Wigam. **Alumni Shows Planned**  
An alumni chorus of mixed voices of former Washington high students will be planned at a meeting announced by Edward Emery of the music department at 7 p. m. Tuesday at the school.

The history department club, Civic Quest, of Washington high school, will elect officers at a meeting Nov. 21. Miss Elizabeth Meyers, club sponsor, announced.

**PLANS BARGE EXPANSION**  
WASHINGTON, Oct. 10 (U. P.).—Inland Waterways Corp. disclosed today that it plans to extend its barge operations from Kansas City to Sioux City, Iowa, on the Missouri river next spring.

## Council Rules For Weddings

ST. HELENA, England, Oct. 10 (U. P.).—The St. Helena town council has barred all Saturday afternoon funerals. Funeral and wedding processions use the same vehicles and Saturday afternoon is the most popular time for weddings.

**ECHO OF PRE-REFUEL DAYS**  
PHILADELPHIA (U. P.).—State liquor agents nabbed Thomas F. Gadlardi and Pasquale de Leon-ardo just as they were about to put a five-gallon can of alcohol aboard a hearse, for disguised transportation.

# So You're Getting MARRIED

... and you can just visualize yourself drifting down the aisle in white satin and lace, with one of our glorious diamond rings to climax the ceremony! Join the many matrimony-minded couples who have made Barney's shopping headquarters.

You Shop Better when  
You Shop Barney's



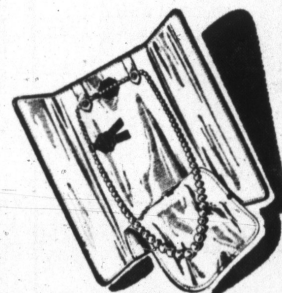
Devotion!

Choose the thrilling brilliance of this five-diamond, 14-karat gold ring as a stunning symbol of your everlasting love for her. . . \$100



Majestic!

Give Her Majesty, the queen of your heart, this magnificent diamond solitaire, reigning in a gleaming throne of precious platinum. . . \$350



Bridal!

As traditional as the "something old, something new" custom is a necklace of lustrous simulated pearls at the bride's throat. Choose now. . . \$3.50 up



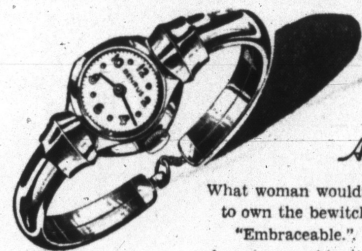
Splendor!

Strike the right note in masculine elegance with this suave Gruen Curvex, faultlessly timed by a 17-jewel movement of Precision accuracy. . . \$59.50



Rapture!

Your radiant bride will consider you a paragon of perfection when you pledge your love with this brilliant six-diamond wedding ensemble. . . \$150



Adorable!

What woman wouldn't love to own the bewitching Benrus "Embraceable." Here is a charming combination of elegance and efficiency. . . \$59.50



Hospitality!

Assure the bride's success as a hostess with a gracious service for eight set of silverplate, chosen from our classic collection. . . \$33.75 up



Groom!

Whether he's man or spouse, this superb diamond, dramatically mounted in 14-karat gold, should constitute part of his good grooming. . . \$150

## Make up your own Ensemble

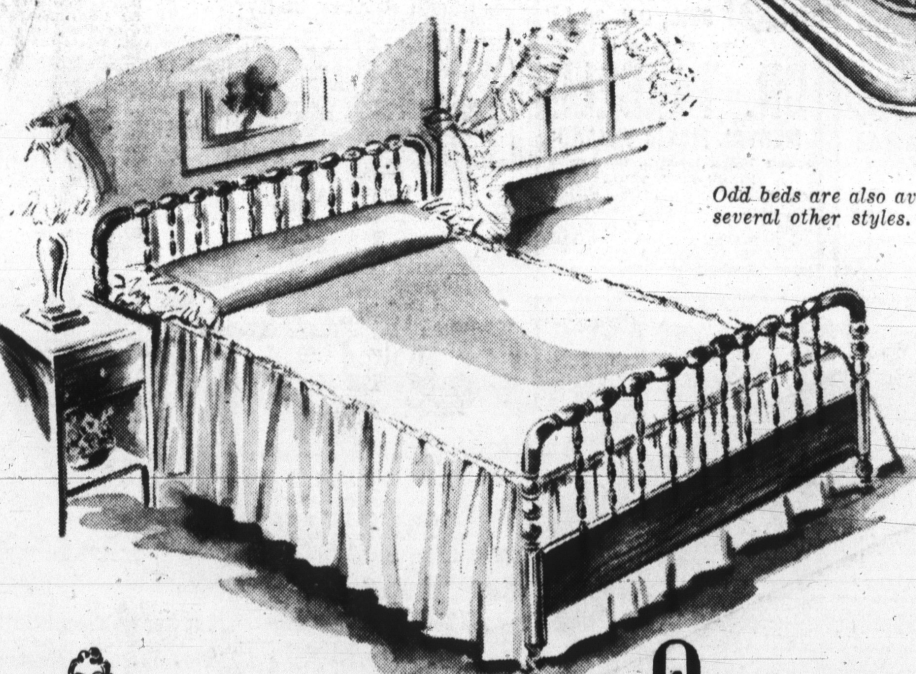
When you want to furnish a bedroom inexpensively . . . and still make it charming and comfortable . . . choose bed and bedding from COLONIAL'S fine assortment.

The Jenny Lind bed is especially sturdy, available in maple or walnut finish . . . \$26.25

The plumply padded coil spring mattress and matching box springs have heavy woven stripe coverings . . . \$89.50



Odd beds are also available in several other styles.



Phone or  
Write to  
Miss Gray  
She will give  
your order  
her personal  
attention!  
PHONE  
MA-4401

FINE FURNITURE

**Colonial**  
FURNITURE CO.  
47 SOUTH MERIDIAN

★ Terms Cheerfully Arranged  
★ Free State-Wide Delivery

Quality Jewelers  
**BARNEY'S**  
LINCOLN HOTEL CORNER  
101 West Washington St.