

JAPS REPORT HOME ISLE RAID

Called Supporting Thrust to Unconfirmed Invasion.

By FRANK TREMAINE
United Press Staff Correspondent

GUAM, March 28.—Tokyo said that American carrier planes raided Southern Japan today in support of the reported invasion of the Kerama Islands, 380 miles to the southwest.

A broadcast Domei news agency dispatch said that approximately 90 carrier planes raided Kyushu, southernmost of the Japanese home islands, this afternoon (Japanese time).

The raid was centered on the Miyazaki and Kagoshima prefectures in the southern part of the island, Domei said.

An early Tokyo radio broadcast claimed that American reinforcements had landed in the Kerama Islands, southwest of Kyushu, and said "savage battles" were under way.

Reports Shelling
The invasion of the Keramas, part of the Okinawa group, is only a prelude to imminent landings on Okinawa Island itself, site of an important naval base and several airfields in Japan's inner defense belt, Radio Tokyo said.

Supporting American warships, including at least 11 battleships and 15 aircraft carriers, shelled and bombed Okinawa and other islands to the west and south for the sixth straight day today, Tokyo added.

Japanese broadcasts said the reinforced task force now comprised 100 vessels and estimated that nearly 1300 planes took part in yesterday's strikes against the Okinawa and the Kerama group of islands.

Pacific fleet headquarters remained silent on enemy reports of landing in the Keramas, but confirmed that warships and carrier planes continued to attack "enemy forces and land defense installations" in the Ryukyu chain, of which the Okinawa group is part.

Pound Main Island
A delayed dispatch from Vice Admiral Marc A. Mitscher's flagship off Okinawa said battleships, cruisers and destroyers pounded the main island of the Ryukyu group with more than 1000 tons of explosives Saturday.

Headquarters also announced that navy search planes, presumably based on two damaged three small cargo ships around Hashio Island, 150 miles south of Tokyo, Monday.

It was the deepest penetration of Japanese waters yet by land-based planes other than Superfortresses.

Radio Tokyo said 60 to 70 Superfortresses followed up yesterday's daylight raid on Kyushu, southernmost of the Japanese home islands, with a second attack lasting from 10:30 p. m. to last midnight.

PROMPT ACTION ON DRAFT BILL SEEN

WASHINGTON, March 28 (U. P.).—Senate leaders today expected prompt passage of house-approved legislation extending the selective service act for another year and for the drafting of nurses.

Both bills were approved yesterday by the senate military affairs committee.

The only fight in prospect may be on an amendment to the draft extension to prohibit the war department from using boys under 19 in active combat.

QUINTUPLÉTS DIE SOON AFTER BIRTH

WASHINGTON, March 28 (U. P.).—The last of a set of quintuplets born to a Negro mother here last night died early today.

Mrs. Ada Turner, 36, gave birth to the five babies, all girls, beginning at 10:40 p. m. The fifth child was born 17 minutes later.

The father, Harold Turner, 36, is a clerk at the U. S. bureau of standards here. The couple has six other children, including a 4-year-old set of twins.

Russia in Lightning Drive Now 21 Miles From Austria

LONDON, March 28 (U. P.).—The Red army drove within 21 miles of the Austrian frontier and about 65 miles of Vienna today with a lightning thrust to Sarvar on the Raba river, 26 miles west of Papa.

Other Soviet columns were pushing toward Csona, 75 miles south-east of Vienna, and were reported already across the Raba river just east of Csona.

Moscow dispatches for the first time spoke of the drive as aimed at an ultimate junction with the forces of Lt. Gen. George S. Patton, which already have spearheaded halfway to the Czech border across southern Germany.

At the same time major fighting was reported on the Oder line, where the Nazis claimed they were

trying to drive a corridor through to German elements which they said were still resisting inside Kuestrin, 38 miles east of Berlin.

Attack Oder Line
The Vienna-bound drive coincided with new and extremely heavy Soviet attacks on the Oder river line, centering around Kuestrin, 38 miles east of Berlin.

Nazi accounts admitted Soviet penetrations at Kuestrin where they contended an encircled garrison still was holding out.

The Russians were mopping up in Gdynia and Danzig and expected to complete occupation of the Baltic cities today or tomorrow.

Russian accounts said that the remaining defenders largely were poorly trained marine battalions, including many boys and elderly men.

It was estimated that the Red army had captured about 100,000 prisoners in the past week's fighting, principally around Koenigsberg and in northwestern Hungary.

YANKS NEARING CEBU CAPITAL

U. S. Forces Drive Across Island After Landing.

By R. D. QUIGG
United Press Staff Correspondent

MANILA, March 28.—American invasion forces swept over Cebu today to within two, and half miles of burning Cebu City, capital of the central Philippines island.

Elements of the American division, which landed on the mine-strewn beach at Talisay on the east coast Monday, were battling the Japanese garrison at Pardo just south of the capital. Cebu City is the second largest port in the Philippines.

Huge fires were reported out of control in Cebu City and the Japanese apparently were following their theme of destruction, which dev-

astated Manila and other island capitals in the archipelago.

A naval bombardment from cruisers and destroyers covered the landing made by Maj. Gen. W. H. Arnold's veterans of Guadalcanal and Bougainville.

Although the Japanese were caught off guard by the invasion, the assault troops ran into mortar fire from the Talisay area, five miles south of Cebu City.

Bombers and fighters of the 13th air force joined the drive and blasted a path for the ground forces moving onto the hard-surface road paralleling the coast.

Five small villages were swept up and a stubborn Japanese pocket was knocked out nearly two miles north of Talisay in the drive which carried to the town of Pardo.

Important Target
The capital, with its three large piers and airfields, was a prime target for Gen. Douglas MacArthur's forces.

Cebu city is just across a narrow strait from historic Mactan island, where Magellan died in the 16th century from a poisoned arrow. It is only 75 miles from Ormoc on

American-held Leyte and approximately 350 miles southeast of Manila.

Adm. Russell Barkey commanded the task force which supported the landing and Capt. William Sprague commanded the amphibious attack force.

Forces Near Junction
On Luzon, the 1st cavalry division and the 11th airborne division were nearing a junction as they edged the Japanese into the southeastern tail of the island.

Liberator bombers of the 5th air force raided the airdrome and port facilities of Legaspi, near the extreme southeastern tip of Luzon again Sunday with 80 tons of bombs.

Other 5th air force Liberators the same day hit Formosa, bombing and strafing an alcohol factory and a power plant at Okayama.

S. S. LEHAND LAUNCHED

PASCAGOULA, Miss., March 28 (U. P.).—The S. S. Marguerite A. Lehand, named for President Roosevelt's late confidential secretary, "Missy," was to be launched at the Ingalls Shipbuilding Corp. here today.

OLD WORLD COURT STATUTE FAVORED

WASHINGTON, March 28 (U. P.).—Government favors retention of the statute of the old world court, with modifications, rather than the writing of an entirely new one.

It will press for that policy at the preliminary meeting of international jurists here on April 9—a meeting that will seek to draft a court statute for presentation to the world organization conference in San Francisco on April 25.

The U. S. officials who will participate believe that only minor changes in the old statute are needed or desirable. One of the U. S. changes will be a proposal for ways of amending the statute. The old court's statute had no provision for change.

FIRES UNDER CONTROL

LANSING, Mich., March 28 (U. P.).—Fires which destroyed more than 7000 acres in five southern Michigan counties were reported by state police department as under control today.

On to Berlin

By UNITED PRESS

The nearest distances to Berlin from advanced allied lines today: EASTERN FRONT—31 miles (from Zaeckerick).

WESTERN FRONT—234 miles (from Weizlar, U. S. official report); 190 miles (from near Fulda, by German report).

ITALIAN FRONT—524 miles (from Po di Primaro river).

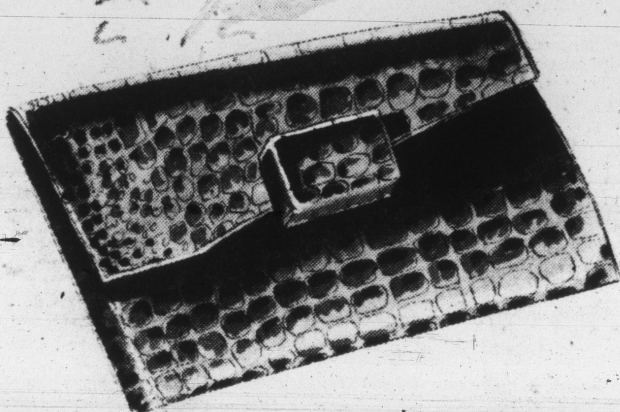
OLD CHINESE CUSTOM GETS WING IN JAIL

SAN FRANCISCO, March 28 (U. P.).—Alcohol tax unit agents today proved themselves no respecters of Chinese traditions.

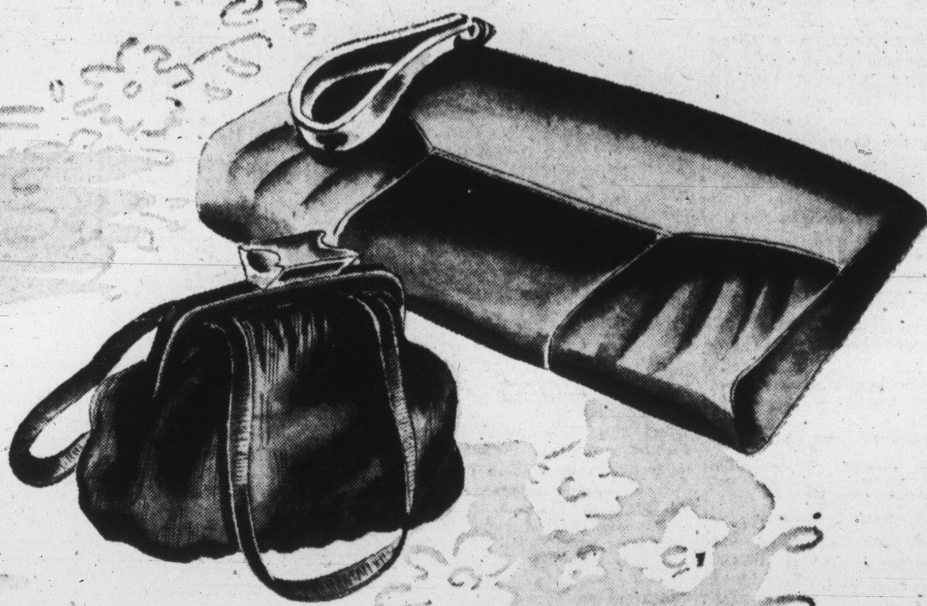
Free on \$1000 bond was Wing Louie, who celebrated the birth of his first grandchild today by setting up a still in his Chinatown home to brew "the drink of a thousand years."

Federal agents smelled the potent mash and brought the 55-year-old gardener down to jail. His hearing will be held April 10.

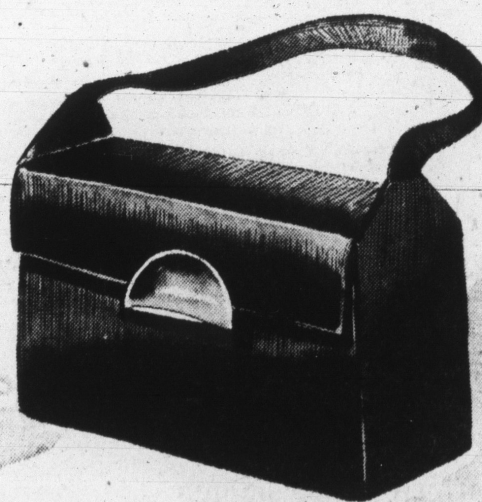
5.00* is the price...



Easter loveliness is the result!



Costume rightness is the purpose...



The handbags are Leather and Rayon Failles

* Plus 20% excise tax
Handbags, Street Floor

L. S. Ayres & Co.

IN INDIANAPOLIS

EVENTS TODAY

Red Cross campaign.
Neosday Holy week services, Keith's theater.
Festival of Passover, sunset.
Co-operative club, luncheon meeting, Columbia club, noon.
Lions club, luncheon, Claypool hotel, noon.
Junior Chamber of Commerce, luncheon, Washington hotel, 12:15 p. m.

EVENTS TOMORROW

Neosday Holy week services, Keith's theater.
Festival of Passover.
Indianapolis Bar association, luncheon meeting, Columbia club, 12:15 p. m.
Indianapolis Real Estate board, luncheon, Washington hotel, 12:15 p. m.

MARRIAGE LICENSES

Era A. Perry, Ft. Dix, N. J.; Lucille W. 1864 Maxine.
Harry Reinhardt, 522 E. Morris; Cordia Masten, 1360 Balston.
Donald Slower, Billings General hospital, Ann Bennett, 1804 Arrow.
Rufus Berman, 948 S. Greenwood; Rosemary Graff, 1008 S. Greenwood.
Hallie Viers, 412 N. California; Mary L. Sharp, 387 W. 13th.
William Andrew Rutherford, 418 N. New Jersey; Agnes Kathryn Goin, 913 N. Chester.
Noble Woods, 426 W. 25th; Ida Frances Thornton, 122 S. Paul.
James E. Simpson, 415 E. St. Clair; Patricia L. Anderson, 410 E. 25th.
Millard Edward Strough Jr., 4920 E. New York; Mildred Pauline Hougland, Scottsburg.
Donald Herbert Ackerman, Ft. Harrison; Brian Hovous, 1147 N. Illinois.
Fred Hamilton, 2724 N. Illinois; Bessie Fowler, 241 W. Kansas.
Robert Vernon Wheeler, Ft. Harrison; Amelia Gertrude Crowder, Evansville.
Robert L. Hanna, 5375 N. Dearborn; Helen M. Hall, 1104 Woodlawn.
Joseph M. Riley, R. R. 2, Box 451; Kathleen Virginia Moore, R. R. 17, Box 520.

BIRTHS

Girls
Loren, Margaret Edmondson, at St. Francis.
Harold, Wynema Coates, at Coleman.
Martin, Frances Siegel, at Coleman.
Charles, Helen Fay, at Methodist.
Myron, Doris Fall, at Methodist.
Harold, Mary Jane Leathers, at Methodist.
Boys
Howard, Helen Frost, at St. Francis.
Darren, Winice Chismas, at City.
Frederick, Mary Downing, at Coleman.
Joseph, Sarah Lammere, at Coleman.
Harold, Dorothy O'Nan, at Coleman.
Thibert, Josephine Bredon, at Methodist.

THIS IS FOREIGN POLICY WEEK

In Indiana, Citizens are urged by the Indiana Committee for Victory and the League of Women Voters to attend the meeting Thursday night in the War Memorial Building at 8 o'clock

to hear Henry F. Schriker, former Governor of Indiana, and Representative Charles M. LaFollette, Indiana member of Congress, just back from the European war front, discuss

"Our Place at the Peace Table"

AYRES

Recre

(Continued)

schools and v. Watch your boards. Mr. Cowen marble tour, he helped a R. for the nation, then, the city has attended ment until then, in 1942 becau

He knows shooting that. Mr. Cowen, visiting nation, watched the back-spin tha stop when I

marble." Mr. your elbow firm the back of y takes a lot of favorite shoot rug at home rug at home rug at home

The Times ticles and pic what Mr. Cow

A southpa recreation dis only an avera age. Later, h and now can his interest h skill hasn't k

"I like ma an expensive boy or girl ca -He was r Roanoke whe national tou at Ocean Cit won over all previously ha

Promi Fle

(Continued)

German elite stationed at Alps of west 20 miles fro possibly for

Other Nazis ing the Volk preferably towns, in the identity with ing punishm

Travelers J from Germa Bohlen, owne works, fled fr soon after th the Rhine at

Contin

Some 10,000 slave workers facture arms bomb-proof of the Krupp said.

The Free an anti-Nazi Stockholm, Heinrich Him evacuation of

STRAU SAYS:

DROP COIN IN HERE