

Showdown Battle Raging in Aachen's Streets

(Continued From Page One)

and begin what Frankish called a house-to-house mop-up of Aachen proper.

Other Units Follow

Other units commanded by Capt. Roland Weeks of Rockville Center, N. Y., and Lt. Beasor Walker of Tuscaloosa, Ala., followed within a few minutes.

For half an hour before the attack began, U. S. mortars blanketed the area beyond the railroad tracks. Light artillery pounded the area beyond the mortar targets, and heavy guns pumped shells farther ahead into the very heart of the city.

Tank destroyers followed the infantry, and tank guns were blasting on German machine gun nests at point-blank range.

"I walked nearly an hour following the infantry's route into the city from the time I left a jeep on the outskirts of Forst-Aachen until I reached a point where whistling machine gun bullets cautioned that fighting still was going on," Frankish reported.

"There were 16 sets of rails at the point where I crossed—an extremely uncomfortable stretch of open ground, with firing on all sides. One G. I. summed up my personal sentiments perfectly when he said, 'It's not particularly rough, but it's a hell of a feeling not knowing who those machine guns are aiming at.'"

16 Sets of Rails

The Americans took a number of prisoners in the early hours of the attack. Most of them were pulled out of cellars. They seemed dazed by the shelling which prepared the way for the infantry. One group of about 60 prisoners included two officers.

Lt. Austin T. McColgan of Cantonville, Md., who led the anti-tank brigade across the tracks 10 minutes after the attack began, said it was "a house-to-house search, which probably will take several days."

To the north, British 2d army infantry in The Netherlands attacked on a mile-wide front west of Venlo toward the Meuse river and, aided

by improving weather, gained up to 2000 yards in the first few hours. Reconnaissance pilots reported that the Germans had begun to evacuate their forces caught between Canadian bridgeheads on the south bank of the Scheide river by barge. The Germans also appeared to have begun a general withdrawal from western Holland and were preparing to leave Rotterdam after wrecking 10 miles of its docks and quays, pilots said.

Turning their sights temporarily from Aachen itself, hundreds of American planes and guns cascaded tons of steel and explosives on a box seven miles wide and three miles deep to the northeast, where scores of panzers were concentrating.

American artillery batteries were laying down "Morty" barrages. Marshal Sir Bernard L. Montgomery's famous desert tactic of firing groups of guns simultaneously at a small target area in an attempt to obliterate the enemy's defenses.

Crack Nazis in Battle

One of Adolf Hitler's crack divisions was spotted at Rohe, six miles northeast of Aachen.

Reconnaissance pilots reported 85 per cent of Aachen already had been damaged by bombs or shells, with a flame-splashed smoke pall rising 6000 feet above the rubble. More than 600 dive-bombers hit the historic city yesterday.

All Aachen's anti-aircraft batteries had been knocked out, but 150 German fighters made a belated attempt to interfere with the bombardment. Though outnumbered by their bombloads, American Lightning and Thunderbolts shot down 12 of their attackers, probably destroyed two more and damaged six for a loss of four of their own planes.

Nazis Raid Village

German planes also raided the village of Brand, three and a half miles southeast of Aachen, last night, killing eight civilians.

The German Transoceanic agency said the battle of Aachen was developing into a "dramatic climax for the entire Western fighting."

"The Americans are even read to neglect other sectors in order to enforce success at Aachen," Trans ocean said.

Lt. Gen. George S. Patton's American 3d army carried its street battle for Meisieres-les Metz, six miles north of Metz, into its sixth day with the Germans still retaining approximately a third of the town.

Eat Germans' Meal

The situation inside Meisieres was so interlocked, United Press War Correspondent Robert Richards reported from the front, that American infantrymen foraging for firewood stumbled upon six Germans eating their rations. They captured all six, ate their hot meal and had no more need for firewood.

The situation at Ft. Driant, southeast of Metz, remained unchanged with American infantrymen clinging to the southwest corner, both above and below the ground.

The French 1st army punched forward north of Le Thillot and captured four villages in a drive deeper into Vosges mountains calculated to outflank the heavily-defended Belfort gap.

RED GLASS... FANCY SEALS
NEW ROCHELLE, N. Y., Oct. 13 (U. P.).—Police were looking today for a stolen 1940 sedan with red glass in the headlights, fancy seals on the front doors and shields front and back. It belongs to Mayor Stanley Church.

REDS ATTACK EAST PRUSSIA

Tilsit Is Initial Soviet Target Within Germany.

(Continued From Page One)

supply of shells for the guns which were bombarding Tilsit and other East Prussian strong points.

Cherniakovsky's forces smashed to within 12 miles of Tilsit yesterday with the capture of Sartinkal, on the border of Memel territory which Adolf Hitler annexed to East Prussia in March, 1933.

The thrust brought the Russians abreast of the Memel border on a 75-mile front curving to within nine miles of Memel itself, while other troops to the southeast seized another eight-mile stretch of the Szesuppe river frontier of East Prussia proper at Ziurial, 30 miles east of Tilsit.

Front dispatches reported Soviet artillery and Red air force planes were bombarding Germany's East Prussian frontier defenses around the clock.

Nazis Counter-Attack

The Germans counter-attacked 18 times yesterday in a futile attempt to stall Soviet forces closing in on Memel. Waiting until the enemy had exhausted himself, the Russians plunged forward to capture 50 towns and villages.

According to incomplete reports, the Germans lost 1500 men killed and 44 tanks.

North of Memel, Gen. Ivan C. Bagramian's 1st Baltic widened its wall pinning 100,000 German troops against the Baltic to within 14 miles of Liepaja, one of three evacuation

35 Jap Ships, 221 Planes Blasted in Formosa Raid

(Continued From Page One)

ferred only to carrier planes in the Formosa raid, Tokyo said the attack was made by bombers and fighters from U. S. army bases in China and Mitscher's fighters. The report also was carried in the Japanese communique which said the island fortress had been attacked from "both sides," and Tokyo radio said "great importance must be attached to the fact" that U. S. army and navy planes were able to make a joint, co-ordinated attack.

Japs Fear Invasion. Another enemy broadcast indicated the serious view taken by the Japanese of Mitscher's powerful blows. It said that thickly populated areas of several towns on Formosa had been partially evacuated and "opportune measures have been taken against possible eventual enemy landing attempts."

The attack was the third in as many days by carrier planes of Adm. William F. Halsey's 3d fleet on the enemy's defenses guarding the southern approaches to Japan.

ports still in enemy hands, with the capture of Skiol on the Latvian coast.

Soviet siege forces at the northern end of the enemy pocket plunged through the suburbs of Riga, capital of Latvia, from three sides and the fall of the big city was expected soon.

One column drove across the Gauja river north of Memel with such force and speed that the Germans had no time to blow up already mined ferries. Forging ahead, the Soviets captured Kalngalciems, only three miles north of Riga.

Marshal Rodion Y. Malinovsky's 2d Ukrainian army fanned out

proper, and the deepest thrust yet toward the China coast.

Mitscher's carriers opened the series of raids Monday with a heavy assault on the Ryukyu islands, which form a chain from Japan's home island of Kyushu to near the northern tip of Formosa.

On Tuesday, "large" forces of carrier planes attacked Luzon, principal island of the Philippines, but Adm. Chester W. Nimitz, in announcing the Formosa raid this morning, still had no details of the Luzon attack.

On Wednesday, (Thursday, Japanese time), Mitscher's fast carrier force took up the offensive against Formosa, 200 miles to the north.

With returns still to come in from the Luzon raid, Wednesday's Formosa strike raised the total number of Japanese ships sunk or damaged by the 3d fleet in a series of attacks in the Bonins, Palau, Philippines, Ryukyus and at Formosa to 387, plus 210 small craft. A total of 1411 Jap aircraft have been destroyed or damaged, 1322 of which are listed as definitely destroyed.

through Hungary in a bid for early conquest of Adolf Hitler's last important satellite.

One force seized the five-way railway center of Subotica, 93 miles south of Budapest, in a 25-mile advance from Szeged, rupturing the last link between Budapest and Belgrade, while others speared through to the Tiza river and captured Abad-Szalok, 65 miles east of Budapest, and Tiszaszentimre, 41 miles west of Debrecen and 75 miles from the capital.

(The American broadcasting station in Europe reported that the Nazi-controlled Belgrade radio had gone off the air.)

LUCE, WALLACE DUE TOMORROW

Vice President on WIRE at 10:45 A. M., Clare at Tabernacle at 8 P. M.

(Continued From Page One)

preceding the vice president there by 24 hours.

This array of orators will be followed on Tuesday by Clarence Budington Kelland, G. O. P. national committeeman from Arizona, who will speak at Bloomington. He will speak at Terre Haute Wednesday night.

Appearing for the Republican ticket here last week was Governor Willis of Kentucky who spoke at New Castle and Boswell. A week earlier, Senator Claude Pepper of Florida spoke for the Democrats here and at Anderson.

Mr. Wallace's schedule here tomorrow is a grueling one. He will be met at the Union Station at 7:45 a. m. by a reception committee composed of public and party officials and personal friends.

Plans Press Conference

After breakfast, he will hold a press conference at 9:45 a. m. and an hour later will meet party workers and friends at a reception at Democratic state headquarters. After his broadcast, he will speak at the luncheon and then go on to Anderson where he will talk from 5:30 to 5:45 p. m. over Station WHBU.

His major address tomorrow night will be broadcast from 8 to 8:45 p. m. over Muncie stations WIBC and WLBC.

His talk at Gary Sunday night

will be broadcast at 8:30 p. m. over station WIND of Gary.

A Republican reception committee will meet Congresswoman Luce at the Union station when she arrives at 2:15 p. m. tomorrow. She will hold a press conference from 4 to 4:30 p. m. Republican County Chairman Henry H. Osborn will act as master of ceremonies at the rally at Cadle Tabernacle which opens at 7 p. m.

Mrs. Eleanor Snodgrass, Republican state vice chairman, will open the program. Among party leaders scheduled to speak before Mrs. Luce goes on the air at 8:45 p. m. are State Chairman John Lauer, Superior Judge Judson L. Stark, Senatorial Nominee Homer E. Capehart, Gubernatorial Nominee Ralph Gates and Senator Raymond E. Willis.

'Witch' Breaks Out on the 13th

(Continued From Page One)

his home in Pullborough and told of the latest developments.

"My, my," he said, "I told Mr. Sykes yesterday that the stone should be pointed east to west with the thicker end toward the east."

"IT APPEARS Mr. Sykes and his helpers set the stone in the wrong direction. But I must say I'm puzzled by the Latin inscription."

"There is no similar case in any of my reference works on psychic phenomena and I wonder just a bit whether some practical joker isn't at work."

"Are you sure, Professor, that the whole thing isn't a prank?" "Mercy, no," the professor exclaimed. "To say that would be to cast doubt on some of the most interesting stories I have ever gathered."

Vonnequits

PERK UP! PAINT UP!

LOVELY KITCHENS! LOVELY BATHS!

USE SHERWIN-WILLIAMS

Semi-Lustre

WASHES EASILY
SOFT SATIN FINISH
BEAUTIFUL, PASTEL COLORS
FOR WALLS AND WOODWORK
FOR KITCHENS AND BATHROOMS

\$3.65 gal.

SEE US FOR THE SENSATIONAL

Vonnequits

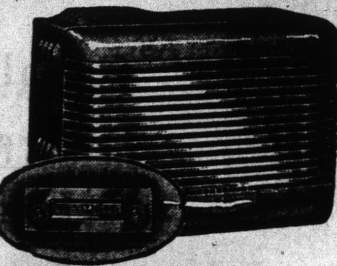
"To Speed Victory, PREVENT FIRES on the Home Front"

Vonnequits

DOWNTOWN Store
Open Mondays Until 9 P. M.
Other Stores Open Saturdays Until 9 P. M.

• 120 E. Washington St.	MA. 2321
• 38th and Illinois Sts.	TA. 3321
• 42d and College	HU. 1397
• Broad Ripple, 802 E. 63d	BR. 5464
• Irvington, 5609 E. Wash.	IR. 2321
• E. 10th at LaSalle	CH. 2321
• Fountain Sq., 1116 Prospect	MA. 3976
• 2125 W. Washington St.	MA. 1771

REPEATED BY POPULAR DEMAND SENSATIONAL BARGAIN



ONE Push-Button Tunes 5 Stations!

FITS ALL CARS

6-TUBE CUSTOM BUILT AUTO RADIO

With 8-Tube Performance

PLUS \$5.45 LATEST TYPE AERIAL

PLUS COMPLETE INSTALLATION (Reg. \$5.00)

- Look at These Features!
- * 6-TUBES, including rectifier and two dual purpose tubes to give 8-tube performance.
 - * 5-STATION SINGLE PUSH BUTTON. One button does the job of five.
 - * 3-GANG MANUAL TUNING gives extreme sensitivity and selectivity.
 - * 7-INCH ELECTRO-DYNAMIC SPEAKER mounts behind dash or may be left in radio case.
 - * BUILT-IN NOISE FILTER. No spark plug suppression necessary.
 - * 2-POSITION PUSH BUTTON TONE CONTROL. Automatic Volume Control. Bass compensation.
 - * SEPARATE CONTROL UNIT on dash for all cars.

\$60.40 Values all for—

\$49.95

Terms LOW AS \$1.25 Week

Immediate Service for All Makes of Home and Auto Radios
Work Done by Factory Trained Men

ROSE TIRE CO.

MILLER TIRES • PHILCO RADIOS • DELCO BATTERIES

930 N. Meridian St.—Open to 6 P. M.—Sat. to 6:30 P. M.
OPEN MONDAY 'TIL 8 P. M.

Block's

DOWNSTAIRS STORE

LUMBER-JACK SUIT

Pearl Grey
Moss Green
Persian Blue

A lumberjack suit that becomes what you make it... conservative and business-like with a tailored white blouse... gay and daring with a sweater dazler or a bright plaid shirt! Tailored of a soft, rich 65% wool and 35% rayon fabric. Sizes 12 to 20.

5.98
(Blouse Not Inc.)
Fashion Dress Department

"DREAMIES" ... gowns and pajamas for pleasant dreams . . . 3.79 each

Kitten soft brushed rayons that make wonderful sleeping! Long full tailored gowns with long sleeves! Tailored pajamas with elastic waistband trousers and neat collar and pocket trims. Blush rose shade. Gowns in sizes 15, 16 and 17. Pajamas in sizes 16 and 17.

ANKLETS
for Active Feet

A long-wearing mercerized cotton anklet with ankle hugging ribbed top to wear up or down! Yellow, blue, white, brown, navy, red. Sizes 8 1/2 to 10 1/2.

35¢
Irregulars

Thread of Life Hosiery

Exclusively Ours in Indianapolis

New Shipment of These First Quality Sheers!

1.08

- Thread-of-Life hose are fashioned from the finest rayon!
- Thread-of-Life hose hold their beauty through many launderings!
- Thread-of-Life hose fit snugly at ankle, calf and knee!
- In vista beige . . . sizes 8 1/2 to 10 1/2.