

## JANE JORDAN

DEAR JANE JORDAN—I am a girl of 18, married and have a baby. My husband is overseas and I live with his people. His mother writes and tells him that I am running around with boys I used to know, which I am not. I knew a boy for over four years and we were going to marry but split up. I hadn't seen him for a long time, but he has been coming over to see the baby and I didn't see anything wrong with this. Well, I have found that I love him and not my husband. This boy wants me to wait until my husband comes home before I ask for a divorce. My husband says he doesn't care about me or the baby, although he never has seen the child. I know this boy and we love each other. Please tell me what to do as I am very upset. B.

Jane Jordan

Answer.—With very few exceptions I have advised dissatisfied wives not to burden service men with domestic problems until after the war. Then suddenly I received a letter from a service man who disagrees with me. I quote: "I have found through my many discourses with soldiers on this problem that the soldier, regardless of where he is stationed, wants the truth as soon as possible! The mere fact that he is overseas does not prove that the American soldier needs pity or sympathy as you imply by stating 'he is obliged to fight for his country and unable to fight for his home.' If this soldier were still in this country the same problem would have arisen. The woman (R. E. D.) admits she didn't love him before he left a year ago which proves my point that overseas or at home, she (the wife) would have fallen sooner or later. Please stop glamourizing and sym-

I DEEPLY APPRECIATE this letter because it represents a service man's point of view. I would like very much to have letters from other service men on the same subject. Do you want the truth regardless of how bitter, or does bad news from home destroy your morale? In B's behalf I say that it is difficult to remain in love with a man who writes that he cares nothing for his wife or child. Such a man will not be as shocked by a request for divorce as one who is still in love. However, B should have stayed free of other entanglements as long as she was living with her husband's people and living on his pay as a soldier.

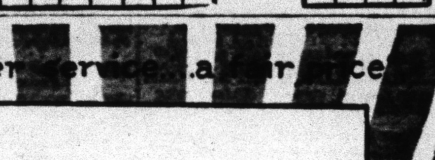
JANE JORDAN.

### CROSSWORD PUZZLE

#### NAVAL AIR UNIT

**HORIZONTAL** 52 This insignia is borne by planes of this unit. 53 Assistant. 54 Antic. 55 Cubic meter. 56 Extremes. 57 Belongs to her (ab.) 58 Insects. 59 Morindin dye. 60 Symbol for. 61 Illium. 62 Cloth. 63 Measures. 64 Everything. 65 Planet. 66 Symbol for tin. 67 Rhode Island (ab.) 68 We. 69 Tendon. 70 Road (ab.) 71 Snake. 72 Folding bed. 73 High school (ab.) 74 Build. 75 Symbol for calcium. 76 Ambary. 77 New England (ab.) 78 Exclamation. 79 Incursion. 80 Concluded. 81 Collection of sayings. 82 Like. 83 Compass point. 84 Transpose. 85 Arabian saber. 86 Symbol for tantalum.

**VERTICAL** 18 gold. 19 Oriental. 20 guitar. 21 Speed contest. 22 Devout. 23 Bury. 24 Darling. 25 Exclamation. 26 Insects. 27 Dealer in real estate. 28 Doctor (ab.). 29 Conclude. 30 Devices for. 31 Hebrew letter. 32 Rush lava. 33 Infirm. 34 Was seated. 35 Any. 36 Bury. 40 Darlings. 42 Sea eagle. 43 Genus of. 44 Baglike part. 45 Her. 46 Exist. 47 Hurrah! 48 Holding. 55 Hebrew letter.



FOR years it has been our aim to serve people in all walks of life. We offer the finest service possible whether the cost is small or without limit.

**G.H. HERRMANN FUNERAL HOME**  
1505 SOUTH EAST ST.  
Ma. 8488

## BUSINESS DIRECTORY

**GEO. J. EGENOLF**  
MACHINIST  
187 1/2 W. South LI-6212

**WHEEL CHAIRS**  
Why buy one? Rent one at  
**HAAG'S**  
402 North Capitol Ave.

**RE-WEAVING**  
OF MOTHS HOLES—STAINS  
OF WORN SPOTS  
**LEON TAILORING CO.**  
235 Mass. Ave. in the Middle of the First Block

**SAXOPHONE \$1.25**  
INSTRUCTION  
115 E. Ohio St. — FR. 1124

**PHOTO-LOGO**  
PRINTS  
Indianapolis Blue Print & Lithograph Co.

**SHOP AND SAVE**  
AT  
WESTERN AUTO STORES

**PERSONAL LOANS**  
Modernize Cost Monthly Payments  
Personal Loan Department  
**Peoples State Bank**  
130 E. MARKET ST.  
Member Federal Deposit Insurance Co.

**PEARSON'S**  
FURNITURE • PIANOS  
BAND INSTRUMENTS  
RECORDS • SHEET MUSIC  
128 N. Penn. LI. 5313

**DAVIS CLEANERS**  
We Save Because We Save  
Men's Suits & Overcoats  
\$16.75 \$18.75 \$21.75 \$24.75  
218 N. Senate Ave. Open 9 to 9

## RADIO PROGRAMS

THIS EVENING  
(The Indianapolis Times is not responsible for inaccuracies in program announcements caused by station changes after press time.)

WPMR 1280 (CBS)	WIBC 1070 (Mutual)	WIRE 1430 (NBC)	WISN 1310 (Blue Network)
8:00 Casey of the Press 8:15 Casey of the Press 8:30 Mother & Dad 8:45 Mother & Dad	8:00 Easy Does It—News 8:15 Easy Does It—Mus. 8:30 Easy Does It—Mus. 8:45 Easy Does It—Mus.	8:00 Your America 8:15 Your America 8:30 Your America 8:45 Your America	8:00 Today's Market 8:15 Today's Market 8:30 Today's Market 8:45 Today's Market
8:50 D. Rodgers—News 9:05 D. Rodgers—Mus. 9:20 D. Rodgers—Mus. 9:35 D. Rodgers—Mus.	8:50 Richard—News 9:05 Richard—Mus. 9:20 Richard—Mus. 9:35 Richard—Mus.	8:50 Your America 9:05 Your America 9:20 Your America 9:35 Your America	8:50 Today's Market 9:05 Today's Market 9:20 Today's Market 9:35 Today's Market
9:40 D. Rodgers—News 9:55 D. Rodgers—Mus. 10:10 D. Rodgers—Mus. 10:25 D. Rodgers—Mus.	9:40 Richard—News 9:55 Richard—Mus. 10:10 Richard—Mus. 10:25 Richard—Mus.	9:40 Your America 9:55 Your America 10:10 Your America 10:25 Your America	9:40 Today's Market 9:55 Today's Market 10:10 Today's Market 10:25 Today's Market

WPMR 1280 (CBS)	WIBC 1070 (Mutual)	WIRE 1430 (NBC)	WISN 1310 (Blue Network)
7:30 Jubilee 7:45 Jubilee 8:00 World News 8:15 World News 8:30 Bible Academy 8:45 Bible Academy	7:30 Bible Church 7:45 Bible Church 8:00 Rev. P. B. Crawford 8:15 Rev. P. B. Crawford 8:30 Rev. P. B. Crawford 8:45 Rev. P. B. Crawford	7:30 Unbroken Melodies 7:45 Unbroken Melodies 8:00 World News 8:15 World News 8:30 World News 8:45 World News	7:30 Coffee Concerts 7:45 Coffee Concerts 8:00 Musical Memories 8:15 Musical Memories 8:30 Musical Memories 8:45 Musical Memories
8:50 Sweet and Lovely 9:05 Sweet and Lovely 9:20 Sweet and Lovely 9:35 Sweet and Lovely	8:50 Calvary Tabernacle 9:05 Calvary Tabernacle 9:20 Calvary Tabernacle 9:35 Calvary Tabernacle	8:50 Church of Christ 9:05 Church of Christ 9:20 Church of Christ 9:35 Church of Christ	8:50 Musical Memories 9:05 Musical Memories 9:20 Musical Memories 9:35 Musical Memories
9:40 Sweet and Lovely 9:55 Sweet and Lovely 10:10 Sweet and Lovely 10:25 Sweet and Lovely	9:40 Calvary Tabernacle 9:55 Calvary Tabernacle 10:10 Calvary Tabernacle 10:25 Calvary Tabernacle	9:40 Church of Christ 9:55 Church of Christ 10:10 Church of Christ 10:25 Church of Christ	9:40 Musical Memories 9:55 Musical Memories 10:10 Musical Memories 10:25 Musical Memories

WPMR 1280 (CBS)	WIBC 1070 (Mutual)	WIRE 1430 (NBC)	WISN 1310 (Blue Network)
7:00 World Today 7:15 World Today 7:30 World Today 7:45 World Today	7:00 Bible Church 7:15 Bible Church 7:30 Bible Church 7:45 Bible Church	7:00 World News 7:15 World News 7:30 World News 7:45 World News	7:00 Coffee Concerts 7:15 Coffee Concerts 7:30 Coffee Concerts 7:45 Coffee Concerts
8:00 World Today 8:15 World Today 8:30 World Today 8:45 World Today	8:00 Bible Church 8:15 Bible Church 8:30 Bible Church 8:45 Bible Church	8:00 World News 8:15 World News 8:30 World News 8:45 World News	8:00 Coffee Concerts 8:15 Coffee Concerts 8:30 Coffee Concerts 8:45 Coffee Concerts
9:00 World Today 9:15 World Today 9:30 World Today 9:45 World Today	9:00 Bible Church 9:15 Bible Church 9:30 Bible Church 9:45 Bible Church	9:00 World News 9:15 World News 9:30 World News 9:45 World News	9:00 Coffee Concerts 9:15 Coffee Concerts 9:30 Coffee Concerts 9:45 Coffee Concerts

WPMR 1280 (CBS)	WIBC 1070 (Mutual)	WIRE 1430 (NBC)	WISN 1310 (Blue Network)
7:00 World Today 7:15 World Today 7:30 World Today 7:45 World Today	7:00 Bible Church 7:15 Bible Church 7:30 Bible Church 7:45 Bible Church	7:00 World News 7:15 World News 7:30 World News 7:45 World News	7:00 Coffee Concerts 7:15 Coffee Concerts 7:30 Coffee Concerts 7:45 Coffee Concerts
8:00 World Today 8:15 World Today 8:30 World Today 8:45 World Today	8:00 Bible Church 8:15 Bible Church 8:30 Bible Church 8:45 Bible Church	8:00 World News 8:15 World News 8:30 World News 8:45 World News	8:00 Coffee Concerts 8:15 Coffee Concerts 8:30 Coffee Concerts 8:45 Coffee Concerts
9:00 World Today 9:15 World Today 9:30 World Today 9:45 World Today	9:00 Bible Church 9:15 Bible Church 9:30 Bible Church 9:45 Bible Church	9:00 World News 9:15 World News 9:30 World News 9:45 World News	9:00 Coffee Concerts 9:15 Coffee Concerts 9:30 Coffee Concerts 9:45 Coffee Concerts

WPMR 1280 (CBS)	WIBC 1070 (Mutual)	WIRE 1430 (NBC)	WISN 1310 (Blue Network)
7:00 World Today 7:15 World Today 7:30 World Today 7:45 World Today	7:00 Bible Church 7:15 Bible Church 7:30 Bible Church 7:45 Bible Church	7:00 World News 7:15 World News 7:30 World News 7:45 World News	7:00 Coffee Concerts 7:15 Coffee Concerts 7:30 Coffee Concerts 7:45 Coffee Concerts
8:00 World Today 8:15 World Today 8:30 World Today 8:45 World Today	8:00 Bible Church 8:15 Bible Church 8:30 Bible Church 8:45 Bible Church	8:00 World News 8:15 World News 8:30 World News 8:45 World News	8:00 Coffee Concerts 8:15 Coffee Concerts 8:30 Coffee Concerts 8:45 Coffee Concerts
9:00 World Today 9:15 World Today 9:30 World Today 9:45 World Today	9:00 Bible Church 9:15 Bible Church 9:30 Bible Church 9:45 Bible Church	9:00 World News 9:15 World News 9:30 World News 9:45 World News	9:00 Coffee Concerts 9:15 Coffee Concerts 9:30 Coffee Concerts 9:45 Coffee Concerts

## OUR BOARDING HOUSE

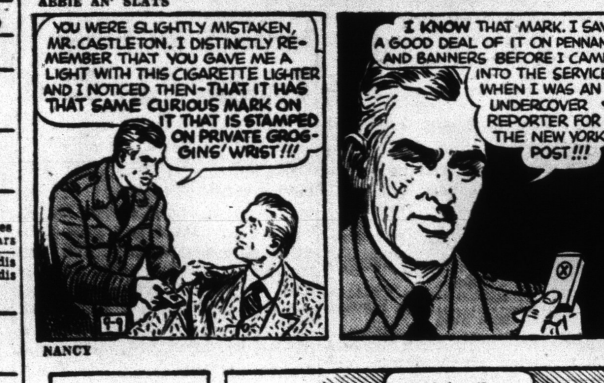
EGAD, TWIGGS, HAVE YOU NOTED HOW HAGGARD AND NERVOUS I'VE APPEARED LATELY? IT'S THAT CASH I'M CARRYING—MORE THAN \$1,000! AND TONIGHT IS THE THEATER'S GENERAL SHADY CHARACTER EVIL ME SUSPICIOUSLY!

LOSING WEIGHT? YOU STILL LOOK LIKE A LOADED WAGON TO ME! AS FOR THOSE PEOPLE LEERING AT YOU, DO YOU HAPPEN TO REMEMBER WHEN WE GOT THOSE HAMBURGERS AT JOE'S WAGON, YOU GOBBLED THREE ONIONS AS IF THEY WERE PEACHES?

I'LL LEAVE MY SCRAP BOOK THERE—FOR ANY—ONE OF THE CLIPPINGS I CUT OUT IS ON PAGE TWELVE AND ONE ON PAGE EIGHTEEN.

I CUT OUT THREE—LUCKY I DIDN'T PASTE 'EM TIGHT—YOU CAN LIFT 'EM UP TO READ ON TH' BACKS OF 'EM!

I THOUGHT YOU HAD READ THE PAPER—I HAVE TWO RECIPES AND MATT'S COLUMN IN HERE—I'LL LAY THE BOOK HERE!



## OUR BOARDING HOUSE

EGAD, TWIGGS, HAVE YOU NOTED HOW HAGGARD AND NERVOUS I'VE APPEARED LATELY? IT'S THAT CASH I'M CARRYING—MORE THAN \$1,000! AND TONIGHT IS THE THEATER'S GENERAL SHADY CHARACTER EVIL ME SUSPICIOUSLY!

LOSING WEIGHT? YOU STILL LOOK LIKE A LOADED WAGON TO ME! AS FOR THOSE PEOPLE LEERING AT YOU, DO YOU HAPPEN TO REMEMBER WHEN WE GOT THOSE HAMBURGERS AT JOE'S WAGON, YOU GOBBLED THREE ONIONS AS IF THEY WERE PEACHES?

I'LL LEAVE MY SCRAP BOOK THERE—FOR ANY—ONE OF THE CLIPPINGS I CUT OUT IS ON PAGE TWELVE AND ONE ON PAGE EIGHTEEN.

I CUT OUT THREE—LUCKY I DIDN'T PASTE 'EM TIGHT—YOU CAN LIFT 'EM UP TO READ ON TH' BACKS OF 'EM!

I THOUGHT YOU HAD READ THE PAPER—I HAVE TWO RECIPES AND MATT'S COLUMN IN HERE—I'LL LAY THE BOOK HERE!

