

# BLOCK'S DOWNSTAIRS STORE

OPEN SATURDAY  
9:45 TO 5:45

(Right)  
**THE OFF-FACE FLARE** in two tones of felt! 1944's smartest hat with your shining flat hair-do.

3.98



(Left)  
**TINY CALOT** with **TWIN PARROT FEATHER TRIM** ... a brief, love of a hat that fits snugly.

6.95

(Right)  
**THE BOW** and **SEQUIN CALOT** with a full flirtatious veil.

3.00



*Match Your Fall Hat to Your Mood*

(Above)  
**THE FELT TOQUE** ... delightfully youthful and sophisticated at the same time.

3.00

(Right)  
**THE CASABLANCA** ... most flattering of all 1944 brims. Of stitched felt.

3.98



(Above)  
**THE ENVELOPE BERET** with a forward flare and a swish of contrasting feather trim.

3.98



(Above)  
**THE HIGH TURBAN** with jet ornament and feminine satin bows!

6.95

Fall '44 hats are different and definitely wearable! Challenging ... as they should be this autumn! Important ... keyed to your major activities! Flattering ... so that you look your best always! This great fashion-right Downstairs department features a young and right collection in fall's new shades ...

**GAY FUCHSIA!**  
**INVINCIBLE BLUE!**  
**SPICE! BLACK!**  
**TROPIC OLIVE!**  
**LIGHT COFFEE!**  
**CASTILIAN RED!**  
**BROWN!**



For Fingertip Smartness!

## Fabric Gloves

For Your Tailored Ensembles!

1.25

In harmony with your most tailored costumes ... and readily washable! Black or brown in a complete range of sizes for women.

Soft as a Kitten

## SWEATERS

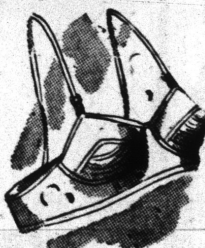
In Luscious Fall Shades!

3.98

Boxy and classic pull-overs in soft all-wools and wool blends! Such color appetizers as lilac ... melon ... green ... gold ... blue ... pink ... yellow, beige or white. Sizes 34 to 40.

### Small Importants

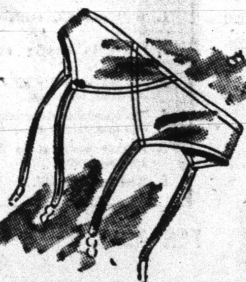
From the Corset Department



**BRASSIERES** in the **POPULAR UPLIFT STYLE**

1.00

A big selection of fine tailored broadcloths in sizes 32 to 38 bust in A, B and C cups. Tea rose!



**BIG SELECTION** of **GARTER BELTS**

1.00

Assorted widths and styles in white or tea rose. Small, medium and large.



**"CORAY" BALBRIGGAN PAJAMAS** are **COZY**, 2.98

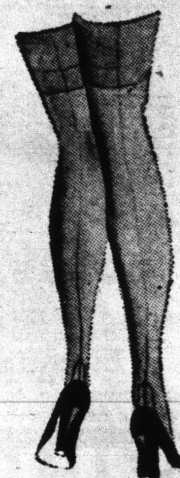
of 75% Combed Cotton and 25% Rayon!

Extra warmth for the stay-at-homers and the college bound! With long sleeves and snug ski bottoms on the trousers for super sleeping comfort! Tailored with neat collar trim. Sizes 15, 16 and 17 in blue or tea rose!



**OUR CHESTERFIELD JUMPER** ----- 8.98

An all-wool flannel jumper with rayon velvet collar ... popular with college and business girls alike! With tailored kick-pleat skirt and button side placket! In WINE, BROWN, TOAST, KELLY, BEIGE or BRONZENE! Sizes 12 to 20.



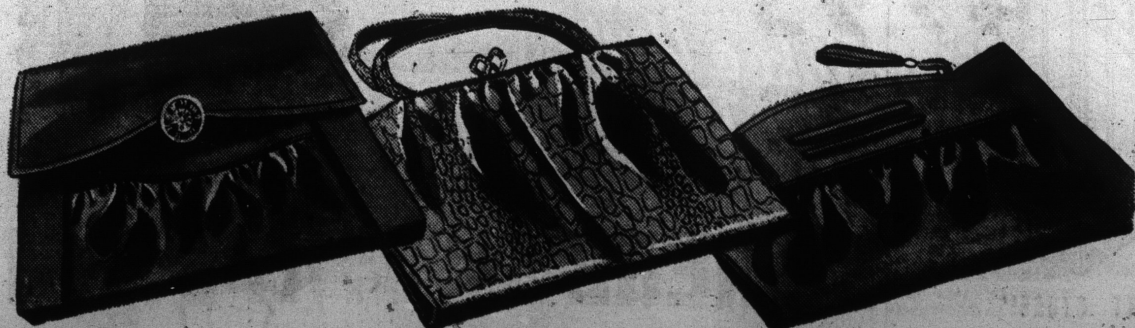
**BEAUTIFUL SHEER RAYON HOSE**

96c

**FIRST QUALITIES**  
• Sheer lovely qualities!  
• They fit at ankle, calf and knee!  
• They dry overnight!  
• Honeylo or sundash shades!  
• Women's sizes 8 1/2 to 10 1/2.



**FIRST QUALITY ANKLETS for SCHOOL WEAR**, 39c  
Fine laces that the girl-about-campus will wear with or without hose! In WHITE, YELLOW, RED, BEIGE with turn-over cuffs! Sizes 9 to 10 1/2.



## ALL OF FALL'S IMPORTANT NEW HANDBAG STYLES

**N HANDSOME SIMULATED LEATHERS** . . . . .

Just look at these fat pouch handbags, the roomy top handle styles, the efficient zipper bags! You'll like their bigness, their roominess, their smartness, and their very close likeness to genuine leather. All the new fall colors!

**\$3** Plus 20% Federal Tax