

Homemaking—

Spun Rayon Fabrics Win Popularity
In Fall Styles for the Junior Miss

FALL FROCKS FOR JUNIORS have appeared in models especially appropriate for this in-between age group who are too old for girls' dresses yet too young for sophisticated styles.

Simply cut but with tricky details and "fitterbug" names that appeal to the schoolgirl, the frocks range from tailored shirt-and-skirt combinations to dress-up treatments casually styled.

Wool-type fabrics of spun rayon blended with other fibers are used in such varied weaves as flannel, twill, homespun and serge.

Gay plaid twills of spun rayon and wool are found in a two-piece frock called "cow-cow classic." The shirt blouse is man-tailored and the matching trouser-top skirt is made with center and side pleating and large slash pockets. Either garment may be obtained separately, to be worn with a plain color skirt or blouse—an economical way of extending the wardrobe.

Elizabeth Ward To Address Pi Phi Mothers

Mrs. Joe Hill is chairman of a luncheon to be given by the Pi Phi Mothers' club for mothers of new pledges at 1 p. m. Monday at the Butler university chapter house.

The program will consist of a talk by Dr. Elizabeth B. Ward, dean of women at Butler; pianoselections by Miss Maribeth Miles and a reading by Miss Kathryn Hill. Mrs. J. Y. Dahlstrand is program chairman. New officers of the organization are Mrs. Frank Miles, president; Mrs. Thomas Harrigan, vice president; Mrs. William H. Petersen and Mrs. Harold Curtis, recording and corresponding secretaries; Mrs. Clarence Johnson, treasurer, and Mrs. E. G. Freilange, publicity.

Shirt-and-Skirt

FINELY TEXTURED flannel with a light cashmere band also is made into shirt-and-skirt outfits, in plain colors, checks and authentic claret plaids. For one two-piece, checked flannel makes the blouse front, and solid color is used for the blouse back, sleeves, bow tie and pleated skirt. This dress may be had in coral, aqua, toast or blue. Made entirely of Tattersal plaid is a button-down-the-back top with collar and cuffs of white broadcloth and pleated skirt.

Separate models of inner-and-outer shirt and pleated skirt are combined. This pair comes in navy, brown, red, aqua, white and other colors.

Velveteen Trim
THE FLANNEL USED for a "junior Chesterfield" frock is full textured, highlighting the twill in the weave. Offered in pink, yellow, blue and white, the dress is a weave of spun rayon and spun acetate trimmed with velveteen collar and belt.

Serge weave is seen in a two-piece outfit, consisting of tuck-in shirt and skirt. Bright-colored felt bands applied on the skirt contrast effectively with the pastel color of the frock.

For a pinafore frock, named "boogie-lane," the fabric is dress-weight homespun in lively plaid pattern. Shoulder ruffles and white pique collar and cuffs, edged with taiting, give a soft effect.

In weaves, colors, and styles, these spun rayon frocks offer the junior girl a selection that is not only suited to her age but is distinctive among fall models.

Auxiliary to Meet

The Indianapolis auxiliary to the Indiana Firemen's association will meet at 7:30 o'clock tonight in the Warren hotel. Mrs. Eunice Wilcox will preside.

Mrs. Paller to Talk

Mrs. Ben Paller will review "Hope Deferred" (Seleta) for members of Sigma Theta Tau sorority at 8 o'clock tonight in Hurty hall.

35 Years on Job



Photorela Photo.

Mrs. Elizabeth Boyle recently was awarded a gold medal by her employer, James P. Carroll, president of the Indiana Bell Telephone Co. in honor of her 35 years of service. She has been secretary to the president since 1924. Prior to that time she served as stenographer and clerk in the commercial department of the company.

Mrs. Boyle has served four years as secretary and two terms as president of the Altrusa club. She organized the fourth regiment of service men's cadettes of which she is colonel.

Mrs. McDavitt To Review Book

Miss Lucille Larimore is president of the Indiana Alpha chapter of Zeta Beta Chi sorority which will sponsor a book review by Mrs. Howard J. McDavitt, "This Was Their Land" (Lloyd), at 8 p. m. tomorrow in the Hotel Lincoln.

Mrs. Shirli Hanchew, vice president, is chairman of the committee for arrangements. She will be assisted by Mesdames Mark Wallace, Jennie Buchanan, J. V. Heizer, Ralph Taylor and Edward Greene Jr. and Miss Betty Westlund and Miss Alma Morrison.

Y. W. C. A. Schedules Gymnastics Class

The Y. W. C. A. has scheduled two more classes on its winter education program—a "slim-for-slacks" gymnastic class and a class in beginning swimming will meet at 6:30 p. m. on Thursdays.

Other Thursday classes are archery, 7:30 p. m.; beginning ballroom dancing, 8:15 p. m., and square dancing at 9 p. m.

Name Officers

Recently elected officers of Rho Gamma Chi—sorority—arg. Miss Lucille Tatum, president; Mrs. Kenneth Oliver, vice president; Mrs. Edward Brown, treasurer, and Mrs. Ben Fellers and Mrs. Frank Clay, recording and corresponding secretaries.

Working Girls Get Counsel. In Washington

Lead 'Capital' Life
With Government Aid

By JAMES THRASHER

Times Special Writer

WASHINGTON, Oct. 7. — The plight of the poor working girl in Washington has given rise to a lot of horror stories, but this isn't going to be one of them. On the contrary, this is going to be a cheerful little item about the war department's employee service section, which is doing a first-rate job as guide and counselor to Washington's thousands of government girls.

It is no secret that housing, feeding and transportation facilities in Washington were inadequate for the influx of war workers, most of whom were young girls who had never worked away from home.

These government girls were all enthusiastic and patriotic, but the discovery that every war department job isn't glamorous, plus loneliness and hectic living conditions, led to discomfort and not a few hurried departures to home and mother.

Solves Problems

To promote efficiency by removing these causes of discontent, the employee service section was established. The ordinance department had the beginning of such an organization in 1941. But it was not until May of last year that the service was organized in all branches of the war department by the personnel division of army service forces.

The first task was to get the girls adjusted to their jobs and to their new life outside the job. The service helped with everything from housing troubles to income taxes and ration books. It taught the girls steps in the prevention of illness, the use of hospital insurance and about the visiting nurse service and the war department emergency hospitals.

Then the service went after "citizenship responsibilities" — letting the girls know what the war is about, how their jobs fit into the picture and what their responsibilities to their jobs are.

Have Library

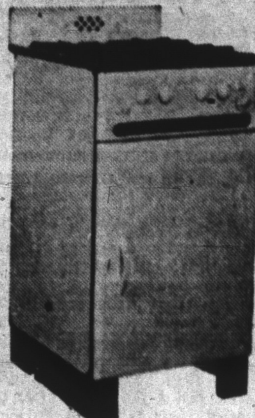
Other things adding up to a happier life for government girls include the signal corps' circulating library of donated books, a piano where the girls play and sing in their leisure time, leisure-hour language classes and resort information to help busy workers plan their vacations.

But signal corps is proudest, perhaps, of its work in cutting down absenteeism.

First, its health counselors singled out girls who were over or underweight, or otherwise susceptible to illness, examined them and kept them under observation. Then the service instituted two series of lectures—one on health, delivered by military and civilian medical leaders; the other on "citizenship responsibilities," given by prominent citizens.

The Wm. H. Block Co.

Bring Your Stove Purchase Certificates to
Block's for a Wide Selection

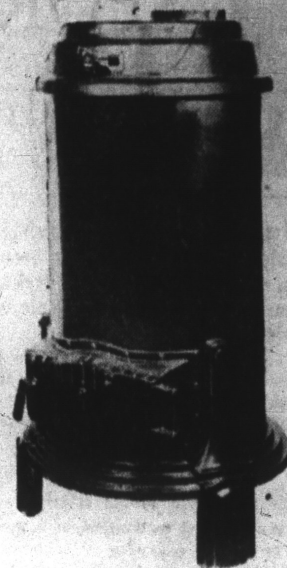


APARTMENT
SIZE
A. B.
GAS RANGE
59.95

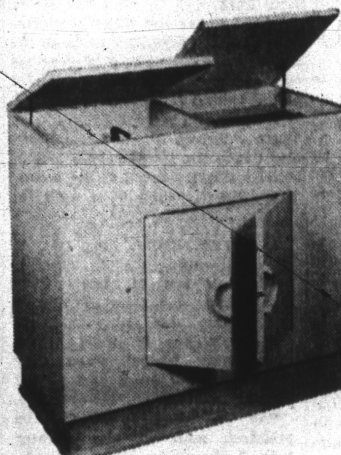
The oven, broiler and cooking top are all full size. Just the unessential extras have been eliminated. All porcelain finished metal, inside and out; flush to floor and wall with front toe room.

WARM
MORNING
HEATER
45.95

Holds 100 lbs. of coal at a time, which means that the fire will last as long as 72 hours without re-fueling, depending on the weather. It's lined with fire brick. Better get one now, and be sure of a warm house this winter.



AVAILABLE ON BLOCK'S CONVENIENT TERMS
BLOCK'S—Dependable Appliances, Fifth Floor
Also at our branch store, 11th and Meridian, open evenings.



See Block's for Better
Radios
CUSTOM BUILT
PHILCO
RADIO PHONOGRAPH
and Automatic Record
Changer
425.00

In Modernistic Design
Fleetwood Cabinet—Fin-
ished in Honey and Blond
Oak—Must Be Seen to Be
Appreciated

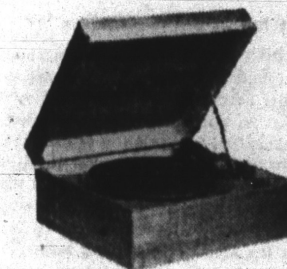
RECORD CHANGERS are stand-
ard make, automatic, play twelve
10-inch, or ten 12-inch records
automatically. Recognized as
one of America's best.

THE SPEAKER... 15-inch high
fidelity, of fine quality, with separate
bass and treble tone control.

ALSO CAN BE HAD IN A SHERATON CABINET... custom built of fine
mahogany in rich, hand-rubbed satin finish, \$399.50.
BLOCK'S—Radio Dept., Fifth Floor
Also at branch store, 11th and Meridian Sts. Open evenings.

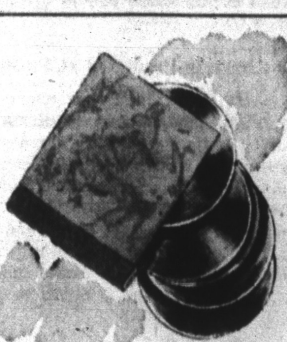
New! Special Wireless
RECORD PLAYER
49.95

It plays through your
radio without any con-
nections to the radio.
Just plug it into a light
socket and it's ready to
give! Attractive walnut
cabinet, plays with the
lid closed.



RECORD ALBUMS
49c

Sturdily bound in at-
tractive covers, with 9
pockets for 10-inch
records. Other record
albums for 10 and 12-
inch records, 79c to
1.75.



COMPLETE BED OUTFITS

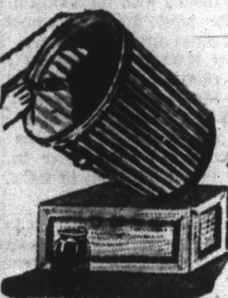
TWIN SIZE ONLY... ALL 3 PIECES

26.50

Good, sturdy steel bed, as pictured, finished in dark
brown walnut tone, plus a steel top coil spring with
wood base, and a soft cotton mattress.

5.50 DELIVERS; Convenient Budget Plan;
Small Carrying Charge

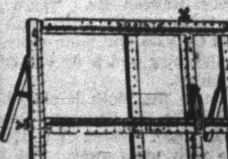
BLOCK'S—Sleep Shop, Fifth Floor



"ACID-O"
RUST PROOFER
1.50 79c 3.85
qt. pt. gal.

Protects galvanized garbage
buckets, eaves troughs, drains.
Rust-proofs, even seals minor
holes, prevents further ero-
sion, damage. Easy to apply;
use like paint.

BLOCK'S—Housekeeping
Dept., Fifth Floor



QUAKER CURTAIN
STRETCHERS
3.99

Easy-to-assemble pine wood
curtain stretchers with self-
squaring corners and adjust-
able center bar. Easel back
type with 1 1/2-inch pin spac-
ings. Stretches to 54"x32."



RID-JID
IRONING BOARD
3.98

15x34 in. table top, under-
structure of wood and metal,
pall handle for easy opening,
storing. Sturdy and rigid.

BLOCK'S—Housekeeping
Dept., Fifth Floor



MOSS ROSE
STEMWARE
29c ea.

A special purchase brings
you this graceful stemware
with the famous Safedge,
and the added ornamenta-
tion of gray-cut moss rose
design.

Goblets, cocktails, sherbets, iced teas, saucer champagnes,
and salad plates to match.
BLOCK'S—China and Crystal Shop, Fifth Floor



OCTOBER
SPECIALS
HORNGLOSS
ENAMEL

Washable, for kitchen
and bathroom
walls and all wood-
work. Attractive col-
ors and white.

2.69
gallon

HORN WHITE ENAMEL UNDERCOAT, Gal. 2.69

MASGA
SPAR VARNISH

IN THE BLUE
CAN, fine for
floors and wood-
work. Stands the
boiling water test. 3/4 Gal.

HORNITE
ENAMEL

Rapid drying for
furniture and
woodwork. Wide
choice of decora-
tive colors.

1.29
quart

LINOCREX FOR
LINOLEUM

Transparent,
washable to pro-
tect the surface
of your precious
linoleum and keep
it looking new.

1.19
quart

HORNAC
HOUSE PAINT

Colors and white.
Covers more, lasts
longer. In 5-gal-
lon quantities.

2.89
gallon

MAIL AND PHONE (Riley 9421) ORDERS FILLED



Get more heat from cheaper
coal. Kol-Saver promotes bet-
ter combustion, increases
heating efficiency. Cuts coal
consumption 20%, eliminates
soot and smoke. No installa-
tion cost; just place on your
grate.

BLOCK'S—Stove Dept.,
Fifth Floor



WAGNER CAST IRON
DUTCH OVEN

2.95

Saves gas with low flame
cooking. Pre-seasoned, 5 qt.
size, with trivet and Pyrex
glass cover.

2.95

Saves gas with low flame
cooking. Pre-seasoned, 5 qt.
size, with trivet and Pyrex
glass cover.

2.95

Saves gas with low flame
cooking. Pre-seasoned, 5 qt.
size, with trivet and Pyrex
glass cover.

2.95

Saves gas with low flame
cooking. Pre-seasoned, 5 qt.
size, with trivet and Pyrex
glass cover.

2.95

Saves gas with low flame
cooking. Pre-seasoned, 5 qt.
size, with trivet and Pyrex
glass cover.

2.95

Saves gas with low flame
cooking. Pre-seasoned, 5 qt.
size, with trivet and Pyrex
glass cover.

2.95

Saves gas with low flame
cooking. Pre-seasoned, 5 qt.
size, with trivet and Pyrex
glass cover.

2.95

Saves gas with low flame
cooking. Pre-seasoned, 5 qt.
size, with trivet and Pyrex
glass cover.

2.95

Saves gas with low flame
cooking. Pre-seasoned, 5 qt.
size, with trivet and Pyrex
glass cover.

2.95

Saves gas with low flame
cooking. Pre-seasoned, 5 qt.
size, with trivet and Pyrex
glass cover.

Here's ROSALIND RUSSELL...



Here's the BEAUTY soap
she uses every day!



CHARMING ROSALIND RUSSELL, STAR OF RKO-RADIO'S "FIGHT FOR FREEDOM"



ACTIVE-LATHER
FACIALS ARE A
WONDERFUL
BEAUTY CARE!
SMOOTH THE
CREAMY LATHER
WELL IN, RINSE
WITH WARM
WATER, SPLASH
WITH COLD.

PAT GENTLY DRY WITH
A SOFT TOWEL. THIS
DAILY BEAUTY CARE
LEAVES SKIN LOVELY
TO LOOK AT, SOFT
TO TOUCH!

If your dealer doesn't
have Lux Toilet Soap to-
day, try again next time
you shop—he'll have
more soon. Remember,
it's worth waiting for!

It's patriotic not to waste soap! Use
no more than you need. Always
keep soap dish dry.

Lux Toilet Soap L-A-S-T-S...It's hard-milled! 2 out of 10 Screen Stars use it