

# ALLIES WILL RULE SEAS, VINSON SAYS

U. S. Naval Expansion Already Influences Course of Battle, House Leader Reports; Cites Patrol Action in Checking Subs Off East Coast.

The accompanying report on the course of the war at sea was prepared by Chairman Carl Vinson (D. Ga.) of the house naval affairs committee with the co-operation of the navy department. It is designed to tell as directly as possible, without violating the requirements of military secrecy, how the united nations now stack up against the axis in the struggle for control of the world's oceans.

By REP. CARL VINSON

Chairman of the House Naval Affairs Committee

WASHINGTON, Sept. 22.—Directly or indirectly, the first fruits of American naval expansion are already influencing the course of the war.

At sea we have begun to turn the corner. Initiative exemplified in the seizure of the Solomon islands is being exercised elsewhere in this global war. It was displayed in the big united nations raid on Dieppe and in the increased pace of the war of attrition U. S. submarines are waging against Japanese shipping.

The battle of the Atlantic has definitely taken a turn to the advantage of the united nations. Ship sinkings off America's Atlantic coast have almost ceased.

When the new land front is launched in the west of Europe, it is sea power that will launch it. Sea power will transport the men and material needed to the point of attack.

To keep them flowing in an unbroken stream until the whole axis edifice has crashed, America and the other united nations must have sea power in overwhelming strength, far beyond challenge by any force that Berlin, Rome and Tokyo can bring against it.

Push Naval Expansion

We are now pushing our greatly augmented program of naval construction with the utmost speed at our command.

When it is completed and joins forces with the British and other allied navies, it will give the united nations a more nearly global strength at sea than the world has ever seen—and sea power, wielded by ships and aircraft, is the anvil on which the decision in this global war is being hammered out.

The navy which we in America are now building will give the added escort and patrol craft needed to put an end to the U-boat menace.

Use Private Facilities

It will enable us to take the offensive with superior force in any theater we choose.

On June 30, 1941, when we were still at peace, we had a total of 697 combat, auxiliary, patrol and mine vessels building. On the same date this year and in the same categories, we had 3230 vessels under construction for our own navy, and

## PROF. EVANS NAMES REPORT CHAIRMEN

Committee chairmen to report on Indiana's correctional system were appointed today by Prof. Louis E. Evans, secretary of the Indiana Council on Crime and Delinquency. The reports are to be made at the council's annual meeting Friday and Saturday at the Hotel Lincoln.

The appointments: Philip Lutz, Indianapolis attorney, criminal code and sentencing practices; Prof. Frank T. Flynn, Indiana state prison trustee, parole selection and supervision; Wilfred S. Bradshaw, Marion county juvenile court judge, probation; Dr. F. B. Knight of Purdue university, war training for prisoners, and Dr. Edwin H. Sutherland of Indiana university, standards and training for corrections personnel.

Sanford Bates, president of the American parole association, will speak at 8 p. m. Friday on "The Prison's Role in Wartime."

218 more building for our allies under lend-lease authorization.

This does not, of course, include the smaller categories—harbor craft, barges, small auxiliaries and so forth—in which we had a total of 11,659 vessels under construction.

The bureau of ships is utilizing both naval and private facilities. About 120 yards on the Atlantic coast, 60 on the Pacific coast, 25 on the Gulf of Mexico, 30 on the Great Lakes and 20 in the Mississippi valley region are building ships for the navy.

Generally deliveries are running well ahead of schedule. In letting a battleship contract, the bureau of ships used to estimate the over-all construction time, from keel to completion, at 42 months. It has now cut its estimates to 36 months, and one of the battleships which the navy commissioned last year was actually delivered only 29 months after its keel was laid.

The bureau has made similar cuts in scheduling its other categories, but even so, actual construction is running well in advance of schedule.

## GOLDEN RULE O. E. S. WILL MEET FRIDAY

Golden Rule chapter 413, O. E. S., will hold a stated meeting at 8 p. m. Friday in the Masonic temple, North and Illinois sts.

Rob Morris night will be observed and the origin and history of the order will be reviewed. Miss Ruth Cochran is worthy matron and Aubrey Porter worthy patron.

PRESS CONFERENCE OFF WASHINGTON, Sept. 22 (U. P.).—The White House has canceled President Roosevelt's Tuesday afternoon press conference.

LONDON, Sept. 22 (U. P.).—A long winter of bombing, during which British and United States bombing planes, working together in day and night raids, will hit targets throughout Germany, was promised today by Maj. Gen. Ira C. Eaker, commanding the bomber command of the American army air force in the European theater. Eaker indicated that at the present United States heavy bombers would specialize in daylight high

altitude precision raids and that the bulk of the night bombing would be done by the royal air force. But he intimated that when a sufficient force of army planes had reached the British Isles, the American air force would aid the British in night raids also. "I believe it is possible to destroy the enemy from the air," Eaker said in an interview published in today's Daily Mail. "There is hardly a corner of Germany we can not

reach. There are now enough airplanes in the British Isles built or building to accommodate all the allied air forces need for the destruction of Germany. "There will be no opportunity for hitting the enemy in depth and strength that will not be investigated and demonstrated by United States bombers within the next few months." Eaker added that some phases of the allied bombing program would require bigger forces than are now available.

Asked whether his statement that it was possible to destroy the enemy by air needed qualification, Gen. Eaker said: "I believe it is possible. By destroying the enemy's aircraft factories you can put an end to his air force. By destroying his munitions plants and communications you can bring his armies to a halt. By destroying his ship yards you can make it impossible for him to build submarines. There is nothing that can be destroyed by gun fire that cannot be destroyed by bombs."

"It should be recognized that air power is one of the most powerful means we have to win the war. We should of course use every weapon, not just one. But to not let us miscalculate power in the air. The winning side in this war will be the one that has the biggest and most effective air force." It was asserted that the allies would be handicapped for some time to come unless needed equipment were speeded up, including flying fortresses in sufficient strength to make big daylight raids.

# "BRIGHTEN YOUR HOME" SALE AYRES DOWNSTAIRS STORE

BUY NOW . . . While Assortments Are Complete!

## BLANKETS and COMFORTS

**"Fieldcrest" Part-Wool Double BLANKETS \$3.50 Pair**

Double plaid blankets in a 95% cotton, 5% wool content, 4-lb. weight. Size 72x84. Block plaids with a matching 4-inch sateen border. Blue, green, rose, peach, cedar, orchid.

**Down-Filled Comforts . . . . Ea. \$9.95**  
72x84 Reversible comforts in a fine celanese rayon taffeta covering. Domino design in a closely stitched all-over pattern. Light weight, but warm.

**Cotton and Wool Comforts \$3.98**  
Printed paisley design sixteen comforts filled with all 75% cotton and 25% reprocessed wool. 72x84 Size with a matching sateen border in solid colors. Reversible.

**Cotton Plaid Sheet Blankets . . Ea. 89c**  
Lovely "Fieldcrest" all-cotton plaid blankets with whipped cord edges. Size 70x90. Blue, green, rose, gold, orchid and peach.

**Double Plaid Blankets . . . . Pr. \$5.98**  
Famous "Fieldcrest" quality blankets, size 72x84: 75% cotton, 25% wool content. Block plaids with 4-inch matching border. Blue, green, peach, rose, cedar and orchid.

**Solid Color Blankets . . . . Ea. \$2.99**  
Just 100 of these jumbo size blankets of 25% rayon and 75% cotton; single blankets. 72x90 inches; slight irregularities.

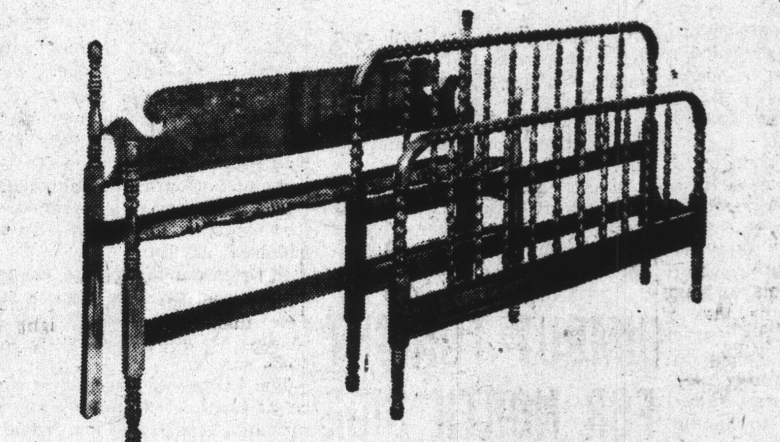
**"Fieldcrest" Cotton Blankets . . Ea. \$1.29**  
All-white, size 72x90. Cotton, with whipped cord edges.

**Reused Wool Single Blankets \$5.00**  
Heavy napped of reused wool from a famous paper mill. Sizes 66x90; 4 to 6-lb. weights, whipped cord edges. Royal blue, wine, blue, rose.

**Part-Wool Double Blankets . . . Pr. \$2.98**  
95% Cotton, 5% wool double plaid blankets. 70x90 Size. In rich block plaids with a matching sateen bind. Blue, green, rose.

**Rayon Taffeta Covered "Perma" Fluff COMFORTS \$5.95 Each**

Reversible taffeta rayon covered comforts with the famous "Perma" fluff filling, 95% cotton, 5% wool. In solid and reversible colors.



**Twin or Full-Size Hardwood BEDS \$8.95**

Charming Jenny Lind or four-poster style beds in twin or full sizes. Sturdily constructed of solid hardwood, with a rich maple or walnut finish. Good looking, long wearing beds, perfect additions to your own bedroom or guest room.

**Chest-of-Drawers \$11.95**

Of Fine Quality Hardwood

Here is the chest for your spare room! Of durable hardwood with a lovely maple or walnut finish, and of sturdy modern construction. It has four good sized drawers, is 42 inches high, 17 inches deep, 21 inches long.

**Innerspring Mattresses \$24.95**

Heavily constructed, to give perfect sleeping comfort! Hundreds of electrically tempered steel coil springs, sisal insulation and heavily padded with white felt cotton. Pre-built borders, air vents and hand holds. Heavy woven ticking in stripe pattern.

Twin or Full Bed Size



**Sale! Genuine Celanese Rayon NINON Panels \$1.00 EACH**

34x72 Inches }  
34x75 Inches }

Better quality full 80-square thread count celanese rayon curtains in sizes suitable for most bungalow windows. In eggshell shade only. Just 5801 Size 34x87 is \$1.29.

—Downstairs at AYRES.

**It's FUN to Make It Yourself! SEW and SAVE**

**20,000 Yards of New Fall Dress Goods**

1. Spun-Rayon and Cotton Plaids
2. Plain Spun Slack Poplins
3. Printed Spun Rayons
4. Plain Spun Rayons
5. Printed Slub Broadcloth
6. Printed Poplin Shorts
7. Plain and Striped Chambrays
8. Khaki Plain Shorts
9. Plain Whipcord Shorts
10. Combed Yarn Seersuckers
11. Twills and Whipcords

**39c YARD**

**Miss Merry Simmons**  
Representative of the DuBarry Pattern Company

... will be in the Downstairs Store Pattern Department Tuesday and Wednesday, September 22 and 23. Come in and let Miss Simmons advise you about the use of DuBarry patterns and the smartest, most economical ways in which to Sew and Save!

**Pin-Wale Corduroy \$1 YARD**

Wonderful, washable pin-wale Corduroys in these crisp Fall colors: Nutria, Coquilleot, Red-spice, Sport Green, Laurel, Soldier Red, Cardinal, Burma Brown, Colonial Blue and Argentine Blue.

A DuBarry Pattern, No. 5389, 15c. Make a smart, ray corduroy jumper or from this pattern, chosen for you by Miss Simmons. It takes 3 yards of pin-wale corduroy for a jumper, size 14.

**Narrow Wale Corduroy, 79c Yd.**

**New Fall Percale Prints 25c Yard**  
New 1 to 10-yard remnant lengths of 80-square percale dress prints. In Fall patterns, and washable fast colors.

**80-Sq. Unbleached Muslin 19c yard**  
Fine heavy quality remnants of unbleached muslin. 2 to 10-yard lengths in 39-inch widths.

—Downstairs at AYRES.

## DOWNSTAIRS at AYRES Proudly We Present An Outstanding Product of American Ingenuity

### Irregulars of "BEAUTY PLUS" Ray de Chine RAYON STOCKINGS

- DULLER
- SHEERER
- STRONGER
- MORE ELASTIC
- MORE BEAUTIFUL
- BETTER WEARING
- MORE SNAG RESISTANT



These Fine All-American Ray de Chine Hose Are Made in Indianapolis by Trojan Hosiery Mills — Nation-Wide Distributor of Fine Hosiery.

Offered in 2 Lovely Weights

**Career Girl CHIFFONS 79c**

Superbly serviceable 42 and 45-gauge full-fashioned Ray de chine stockings and with a high twist, which makes them duller, better fitting, more elastic, more snag-resistant, and gives them a lovely, crepe-like look. In new Fall colors. Sizes 8 1/2 to 10 1/2.

**DeLuxe Sheer CHIFFONS \$1.00**

Beautiful full-fashioned ray de chine stockings with a soft, crepe-like appearance and a high twist which increases their life and their loveliness—make them duller, more elastic, more snag-resistant, stronger and better fitting. They are 51-gauge stockings, in smart Fall shades. Sizes 8 1/2 to 10 1/2.

Exclusive With Ayres Downstairs Store

**We're Well Stocked with these Drapery Needs**

Swinging Drapery Cranes . . . . . 69c	Wood Poles, foot . . . . . 19c
48-Inch Lining Sateen . . . . . 49c	Window Shades . . . . . 39c
36-Inch Lining Sateen . . . . . 29c	Monks Cloth, yd. . . . . 59c
54-Inch Upholstery . . . . . \$1.49	3-Yard Lace Panels . . . . . \$2.50
Shower Curtains . . . . . \$2.98	Cottage Sets . . . . . \$1.00
Marquisette Panels . . . . . 69c	Ornamental Rods . . . . . \$1.00
Flounce Panels . . . . . \$1.00	Traverse Rods . . . . . \$1.19
Homespun Draperies . . . . . \$1.99	Drapery Damask . . . . . 89c
Ruffled Curtains . . . . . \$1.00	French Marquisette . . . . . 25c
Double Curtain Rods . . . . . 25c	

—Downstairs at AYRES.