

# Corner Cafe Defends Crown

## Start Play in 25th Annual Net Tournney

The 25th annual city independent basketball tournament gets under way tonight at Pennys Gym, with 48 teams fighting it out for the crown.

Four games will be played tonight, tomorrow, Thursday, Friday, and next Tuesday and Wednesday, Feb. 24 and 25.

The Corner Cafe team from Brownsburg is defending titleholder, but the competition will be wide open, because all squads have been weakened by the draft.

Play will commence each night at 8:30 p. m. The opener tonight will bring together the Richardson Rubber five and the Castleton Eagles.

First foe of the Corner Cafes are the Martinsville X's, whom they meet at 8:30 p. m. a week from tonight.

### The complete schedule:

**TONIGHT**  
8:30—Richardson Rubber vs. Castleton Eagles.  
9:00—Lilly vs. Monarch Steel.  
9:30—Allison Assemblers vs. Bolden Bears.  
10:00—Kingsman Reliable vs. Schwitzer Cummins.

**TOMORROW**  
9:00—Lilly Turret Lath vs. Turtles.  
9:30—Silver Circle Bar vs. Decatur All Stars.  
10:00—Kingsman Reliable vs. Schwitzer Cummins.

**THURSDAY**  
9:00—Allison U. E. W. vs. R. C. Cola.  
9:30—Pharmacia vs. Dental College.  
10:00—Falls City Beer vs. Allison Bears.

**FRIDAY**  
9:00—S. W. Whippers vs. Bridgman Mill.  
9:30—Richardson All Stars vs. International Printing.  
10:00—Allison All Stars vs. Ruse Service (Brownsburg).

**SATURDAY**  
9:00—Curtis Wright vs. Electric Steel.  
9:30—Corner Cafe (Brownsburg) vs. Martinsville X's.  
10:00—Big A. A. vs. Labor Temple.

**SUNDAY**  
9:00—Cline Lumber (Anderson) vs. Pure Oil.  
9:30—Allison Patrol Service vs. Link Bell.  
10:00—Eastern Coal Co. vs. Electronic Lab.

**MONDAY**  
9:00—J. D. Adams vs. Standard Grocery.

## Ice Fishing Gets Results

This is the season for fishermen who like to desert warm beds in the gray dawn, chop holes in the ice and freeze.

Curbsome, or rather snowbank, experts report that ice fishing is excellent this year, that catches are way up in numbers, that the fish are hungry, and that "it and not horse racing is the sport of kings."

On the other hand there are those who think that kings love comfort and contract the gout and that ice fishing isn't "what it's cracked up to be."

They point out that in the summer it is difficult to go around to each boat on the lake and count the fish caught but in the winter the catch can be counted easily for ice fishermen usually group together and their fish lay open to the eyes of passersby.

### It's a Science

But let this be said for ice fishing—it's a science. Small sheltered lakes are preferred for several reasons. Some of the "pothole" lakes are sheltered, unfished as a rule in the summer and the fish, which in the summer would be "muddy eating" afford clean firm meat in the winter.

The fishing line that is used is almost as thin as sewing thread, the hook is tiny, the gut leader as thin as horsehair and the bobber is no bigger than the eraser on a pencil.

Bait is usually a corn borer, a Kalamazoo wiggler, white grubs or large larvae. And speaking of fishing, C. R. Gutermuth, director of the State Division of Fish and Game, tells us that this spring and summer will see much more and much better fishing.

This, he says, is because high water this winter will cause a more gradual receding in the spring when fish spawn. It seems that fish have never learned that if they spawn close to shore the water may recede suddenly killing their offspring.

Then, too, there will be more water next summer, and naturally the more water you have the more fish you have.

Just in case you are a likely candidate for the "fisherman" species remember—the law allows only two ice holes per fisherman and one line in each hole. The bag limit is the same as for the rest of the year.

Advertisement  
**DO YOU WANT MORE PEP?**

Is Your Liver Inactive? Making You Feel "Down?"

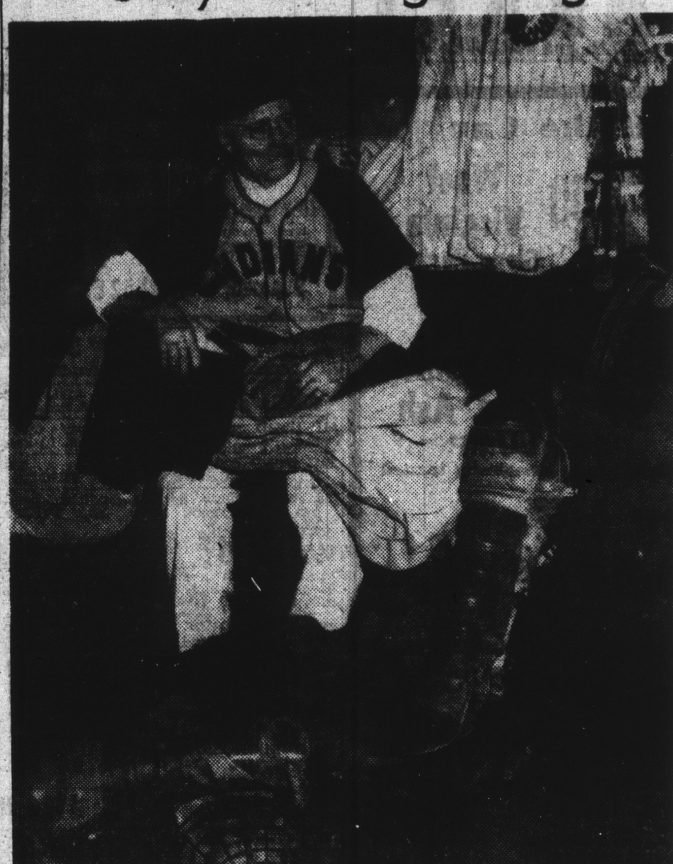
Then you should try Haas's Liver Pills without delay. If your liver isn't secreting all the bile it should it is because the bile flow is not stimulated sufficiently to correct faulty elimination. Constipation results, and that "low" peevish feeling, your interest in life goes and you're not yourself. Don't wait any longer. Get Haas's Liver Pills and feel "TOP!" Available at all Haas's Quality Drug Stores in 25¢ and 50¢ sizes.

**LOANS ON ANYTHING**  
• Fur Coats  
• Cloth Coats  
• Jewelry  
• Men's Suits  
• Cameras  
• Shotguns  
• Transistors  
• Diamonds  
• Watches  
• Typewriters  
• Overcoats  
• Radios  
• Luggage  
• Microscopes  
Cash in a Flash

**SACKS BROS.**  
ILLINOIS at OHIO ST.  
Only One Location

**on Everything**  
Diamonds, Watches,  
Musical Instruments, Cameras  
Clothing, Shotguns, Etc.  
**The CHICAGO JEWELRY CO., Inc.**  
146 E. WASHINGTON ST.

## Only the Beginning



Jim (Hump) Pierce, Indianapolis Indians' trainer, finds there is plenty of work to do previous to the spring training trip, March 6. Yesterday found Pierce opening trunks to take inventory of all equipment.

## De-Emphasis Yale Confirms 'T' Man Being Considered

By JACK GUENTHER  
United Press Staff Correspondent

NEW YORK, Feb. 17.—Clark Daniel Shaughnessy, Stanford's black magic and mirrors man, has arrived in town and the department of remarkable coincidences has tipped me to a strange fact. It seems that the West Coast glamour boy happens along at the exact time that Yale is pressing its search for a football coach who is at least part genius.

The immediate reaction of most eastern observers to this news is that conditions on the West Coast and at Yale must be equally bad.

There appears to be no other conclusion. Yale has confirmed that Shaughnessy is being considered for whatever sort of position it will decide to offer, and that is too bad. After Chicago, Shaughnessy should know better.

The last authentic communication intimated that the Stanford coach was more popular on the Palo Alto campus than a double chocolate malted or an autographed picture of Lana Turner. Other advice held that Yale would stand firm by its policy of de-emphasis. Obviously, both reports cannot be accurate.

Stanford on the surface adds up to everything a coach could want.

It is big time, it has tradition and it is well supplied with material within the limits of the Atherton code. There is only one drawback and that is the war. Crowds in California now are limited to 5000 persons and this ruling may herald lean times.

For several years now Yale has been a minor football power. Since the Clint Frank team broke up in 1937 the Bulldogs have won only seven of 32 games, not all of them against major opponents. In the past two seasons they have triumphed only twice and Ogden Miller, the director of athletics, intimated that he didn't care.

He announced a de-emphasis program last fall and the old gaffers in Yale clubs throughout the nation bit off the ends of their moustaches in indignation.

Nothing that has happened since has assuaged them. Ducky Pond was bounced in 1940. But his successor, Spike Nelson, didn't have half a chance. He was enlisted in military service so the way is open for a new man.

Even if the de-emphasis policy is altered, any coach would have a full job at Yale. Material there is more scarce than any one realizes, but with co-operation a coach might re-build in three or four years.

Wynne, Kappa Kappa Gamma; Maribeth Miles, Phi Beta Phi, and Ruth Ann Lett, Zeta Tau Alpha.

Fraternity representatives include: Ed Taylor, Delta Tau Delta; Milton Dickson, Lambda Chi Alpha; Joe Keetery, Phi Delta Theta; Harry Eward, Sigma Chi; Larry Helm, Sigma Nu, and Alfred C. Brown, Butler Independent Association.

Tentative entries from 20 schools have already been received.

**Begin Relays Ticket Sales**

Tickets for the 10th annual Butler University relays to be held March 14 are now on sale at all Hook drug stores in the city.

Fraternity organizations on the Butler campus are competing for trophies to go to the groups selling the greatest number of tickets.

Appointment of the following ticket sales chairman has been announced by the competing societies: Joan Etkin, Alpha Chi Omega; Betty Krueger, Delta Delta Delta; Marion Pfeiffer, and Carol Howe, Delta Gamma; Barbara Fuller, Kappa Alpha Theta; Martha

**Flying Wildcats**

GLENVIEW, Ill., Feb. 17.—Dick Richards and Ollie Hahnstein, Northwestern football stars, have followed Bob Shepard, basketball captain of 1940, to the United States Naval Air Station here. Shepard has his wings, is with a bombing squadron.

**\$15 for 32 Years**

LAWRENCE, Kas., Feb. 17.—Dr. Phog Allen of Kansas has a victory percentage of .815 to show for 32 years of basketball coaching.

**LOANS ON ANYTHING**  
• Fur Coats  
• Cloth Coats  
• Jewelry  
• Men's Suits  
• Cameras  
• Shotguns  
• Transistors  
• Diamonds  
• Watches  
• Typewriters  
• Overcoats  
• Radios  
• Luggage  
• Microscopes  
Cash in a Flash

**SACKS BROS.**  
ILLINOIS at OHIO ST.  
Only One Location

**on Everything**  
Diamonds, Watches,  
Musical Instruments, Cameras  
Clothing, Shotguns, Etc.  
**The CHICAGO JEWELRY CO., Inc.**  
146 E. WASHINGTON ST.

## Harbert Takes Texas Open And \$1000

SAN ANTONIO, Tex., Feb. 17 (U. P.).—Melvin (Chick) Harbert, 27-year-old Battle Creek, Mich., professional, pocketed a prize of \$1000 yesterday and said he wished the entire winter golf circuit would stay inside Texas.

Harbert nosed out Ben Hogan, Hershey, Pa., veteran, by four strokes in an 18-hole playoff yesterday to win the Texas Open golf tournament, his second major triumph. He won the Reumount Open, last of the big 1941 meetings, last December.

**Tree Trouble**

Playing on a sodden Willow Springs course, Harbert came in with a 72, one over par, but it was good enough to beat Hogan's miserable 78.

Hogan was in trouble several times on the first nine. His drives seemed to seek the trees lining the fairway and he three-putted two greens to give Harbert a two-stroke lead at the turn.

By the 16th hole, Hogan had cut the lead to one stroke. But belting Ben's tee shot stymied, behind an evergreen and despite a nice out he took two putts for a four. Harbert took a par three.

The 17th cost Hogan another two strokes, when his second shot hit a tree and his third landed in a trap. Harbert was holed out in par four. Both shot par on the 18th.

**'Wild Bill' Risks Record Tonight**

The rugged Ray Villmer of St. Louis will pit his skill and speed against the aggressive "Wild Bill" Longson of New York in main go action on the Armory wrestling card tonight.

Longson, a specialist at the rough and tumble style of grappling, has scored seven victories in the local ring, beating such standouts as Dorve Roche, Tom Zaharias, Am Rascher and George Koverly.

Opening action at 8:30 o'clock is between Carlos Freeman, this city, and Tony Ross, Little Rock, Ark., followed by Whitey Grove, Minneapolis, and Rascher, who is from Cedar Lake, Ind.

**OUT-OF-PAWN SUITS & TOPCOATS**  
Not to be confused with general \$3.00 lot of used clothing.  
Chas. L. Barnett, Mgr.  
**FAIRBANKS LOAN CO.**  
203 E. Wash. St. of Delaware

**Tire & Battery Service**  
Call LI-6789 for instant Road Service Daily and Sunday from 6:30 a. m. to 10:30 p. m.

**BLUE POINT DELAWARE & MADISON**

**AUTO and DIAMOND LOANS**  
and Refinancing  
18 MONTHS TO PAY  
**Wolf Sussman, Inc.**  
235 W. WASH. ST.  
Established 41 Years LI-4748  
Opposite Statehouse

**LIGHT Facts for You...**

EARLY ART EXPLORERS FOUND ESKIMOS USING SHALLOW SOAPSTONE LAMPS WITH SEAL OIL OR WHALE OIL FOR FUEL. THE WICK WAS A LITTLE HEAP OF FINELY GRINDING MOSS.

**AMURA MAYDA**  
ANCIENT PERSIAN SUN GOD, WHOSE NAME IS NOW USED TO DESIGNATE CERTAIN TYPES OF ELECTRIC LAMPS WAS WORSHIPPED WITH RICE, SYMBOL OF PURITY.

NATURAL GAS, ESCAPING THROUGH ROCK VENTS, HAS BEEN USED IN ISOLATED AREAS FOR RELATIVELY LONG TIMES. HUNGARIAN, ROMANIAN AND GREEK HAVE HAD SUCH NATURAL GAS, IN CHINA, NATURAL GAS WAS RIPIED FROM SALT MINES IN BAMBOO PIPES.

A JOLLY TASTE IN LAMPS WAS THAT OF THE ONE SWELLERS, WHO USED SKULLS FILLED WITH FAT.

WORK IN MOST FACTORIES AND OFFICES IS MADE MORE PLEASANT BY MODERN LIGHTING. AMPLIFIED LIGHT, FREE FROM GLARE, PROVES AN INDISPENSIBLE INCREASED EFFICIENCY AND FREEDOM FROM EYE-SHIRT ALLEGMENTS DUE TO EXCESS STRAIN. PROPER LIGHT IS A BUSINESS ASSET.

**For Facts about Modern LIGHTING**  
Residential • Commercial • Industrial  
Phone, Write or Visit  
**INDIANAPOLIS Power & Light COMPANY**

## SINGAPORE GETS NEW JAP NAME

It's Now 'Shonan,' Under Orders of Tokyo Military Chiefs.

TOKYO, Feb. 17 (Japanese broadcast recorded by United Press in New York and San Francisco).—Japan changed the name of Singapore today to Shonan, which means "Light of the South." The change was announced by Imperial headquarters.

Japan planned to celebrate Singapore's fall officially tomorrow. Tokyo's citizens eagerly read accounts of the Japanese entry into the city. Domei's correspondent said 15,000 British, 15,000 Australian and 30,000 native soldiers remained on the island after its capitulation.

The dispatch said the British imperials showed little hostility toward the Japanese.

News of the use of parachute troops at Palembang, Australia, was sensational in Japan because the existence of such units had not been generally known.

**Better Sub That Story, Captain**  
BY UNITED PRESS

The German radio fed the home front today with new "details" of U-boat activity in American waters, telling again of a submarine that approached the mouth of New York harbor and saw "Long Island with its piers."

The U-boat commander, a "Captain-Lieutenant Hardegen," was quoted:

"In amazement we looked at the large city. We saw Long Island with its piers. We looked at the hasty traffic of the numerous harbor ships and we looked forward with pleasure to the next victim."

The commander's observations obviously were inaccurate. Long Island's south shore, which leads to New York Harbor, has no piers. The "hasty traffic" of the harbor would not be visible from Long Island waters.

**DROP INDICTMENTS IN WAYNE PUMP CASE**

CHICAGO, Feb. 17 (U. P.).—Federal Judge Philip L. Sullivan today dismissed anti-trust indictments against the Wayne Pump Co., E. Wayne, Ind., three other firms, five individuals and one association in connection with alleged monopolistic practices in sales of computing gasoline pumps.

Judge Sullivan sustained a defense demurrer to the Government indictment, finding that the charges were "much too general" and failed to permit the defendants to make replies to specific allegations.

**Funeral Directors**  
5  
GRINSTEINER'S  
1501 E. New York MA-5874

**GRINSTEINER'S**  
1501 E. New York MA-5874

**GRINSTEINER'S**  
1501 E. New York MA-5874

**GRINSTEINER'S**  
1501 E. New York MA-5874

**GRINSTEINER'S**  
1501 E. New York MA-5874

**GRINSTEINER'S**  
1501 E. New York MA-5874

**GRINSTEINER'S**  
1501 E. New York MA-5874

**GRINSTEINER'S**  
1501 E. New York MA-5874

**GRINSTEINER'S**  
1501 E. New York MA-5874

**GRINSTEINER'S**  
1501 E. New York MA-5874

**GRINSTEINER'S**  
1501 E. New York MA-5874

**GRINSTEINER'S**  
1501 E. New York MA-5874

**GRINSTEINER'S**  
1501 E. New York MA-5874

**GRINSTEINER'S**  
1501 E. New York MA-5874

**GRINSTEINER'S**  
1501 E. New York MA-5874

**GRINSTEINER'S**  
1501 E. New York MA-5874

**GRINSTEINER'S**  
1501 E. New York MA-5874

**GRINSTEINER'S**  
1501 E. New York MA-5874

**GRINSTEINER'S**  
1501 E. New York MA-5874

**GRINSTEINER'S**  
1501 E. New York MA-5874

**GRINSTEINER'S**  
1501 E. New York MA-5874

**GRINSTEINER'S**  
1501 E. New York MA-5874

**GRINSTEINER'S**  
1501 E. New York MA-5874

**GRINSTEINER'S**  
1501 E. New York MA-5874

**GRINSTEINER'S**  
1501 E. New York MA-5874

**GRINSTEINER'S**  
1501 E. New York MA-5874

**GRINSTEINER'S**  
1501 E. New York MA-5874

**GRINSTEINER'S**  
1501 E. New York MA-5874

**GRINSTEINER'S**  
1501 E. New York MA-5874

**GRINSTEINER'S**  
1501 E. New York MA-5874

**GRINSTEINER'S**  
1501 E. New York MA-5874

**GRINSTEINER'S**  
1501 E. New York MA-5874

**GRINSTEINER'S**  
1501 E. New York MA-5874

**GRINSTEINER'S**  
1501 E. New York MA-5874

**GRINSTEINER'S**  
1501 E. New York MA-5874

**GRINSTEINER'S**  
1501 E. New York MA-5874

**GRINSTEINER'S**  
1501 E. New York MA-5874

**GRINSTEINER'S**  
1501 E. New York MA-5874

**GRINSTEINER'S**  
1501 E. New York MA-5874

**GRINSTEINER'S**  
1501 E. New York MA-5874

**GRINSTEINER'S**  
1501 E. New York MA-5874

**GRINSTEINER'S**  
1501 E. New York MA-5874

**GRINSTEINER'S**  
1501 E. New York MA-5874

**GRINSTEINER'S**  
1501 E. New York MA-5874

**GRINSTEINER'S**  
1501 E. New York MA-5874

**GRINSTEINER'S**  
1501 E. New York MA-5874

**GRINSTEINER'S**  
1501 E. New York MA-5874

**GRINSTEINER'S**  
1501 E. New York MA-5874

**GRINSTEINER'S**  
1501 E. New York MA-5874

**GRINSTEINER'S**  
1501 E. New York MA-5874

**GRINSTEINER'S**  
1501 E. New York MA-5874

**GRINSTEINER'S**  
1501 E. New York MA-5874

**GRINSTEINER'S**  
1501 E. New York MA-5874

**GRINSTEINER'S**  
1501 E. New York MA-5874

**GRINSTEINER'S**  
1501 E. New York MA-5874

**GRINSTEINER'S**  
1501 E. New York MA-5874

**GRINSTEINER'S**  
1501 E. New York MA-5874

**GRINSTEINER'S**  
1501 E. New York MA-5874

**GRINSTEINER'S**  
1501 E. New York MA-5874

**GRINSTEINER'S**  
1501 E. New York MA-5874

**GRINSTEINER'S**  
1501 E. New York MA-5874

**GRINSTEINER'S**  
1501 E. New York MA-5874

**GRINSTEINER'S**  
1501 E. New York MA-5874

**GRINSTEINER'S**  
1501 E. New York MA-5874

**GRINSTEINER'S**  
1501 E. New York MA-5874

**GRINSTEINER'S**  
1501 E. New York MA-5874

**GRINSTEINER'S**  
1501 E. New York MA-5874

**GRINSTEINER'S**  
1501 E. New York MA-5874

**GRINSTEINER'S**  
1501 E. New York MA-5874

**GRINSTEINER'S**  
1501 E. New York MA-5874

**GRINSTEINER'S**  
1501 E. New York MA-5874

**GRINSTEINER'S**  
1501 E. New York MA-5874

**GRINSTEINER'S**  
1501 E. New York MA-5874

**GRINSTEINER'S**  
1501 E. New York MA-5874

**GRINSTEINER'S**  
1501 E. New York MA-5874