

Cape Cod Colonial Built on 9th Ave., West; Spacious Lawn Is Among Its Many Features

One of 24 homes being built by the Division Construction Co. in Lafayette Heights and offered for sale by R. E. Peckham, president of the Indianapolis Real Estate Board, is the Cape Cod Colonial at 2928 Ninth Ave., West.

The dwelling, of white frame construction with blue shutters, features a large living room, two bedrooms, a combination kitchen and dinette, bathroom and full basement.

A spacious front lawn, with gravel drive leading to the garage and a black iron railing on the front porch, makes it practical for the resident easily to landscape the property.

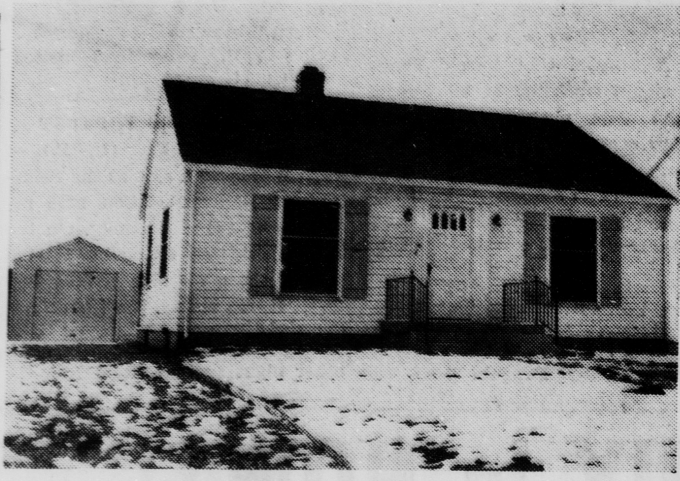
All Floors of Hardwood

The front door, flanked by two colonial front porch lights, leads directly into the living room. Light is obtained through two large windows and the wallpaper is light brown with flowered design. The doors are white.

There are hardwood floors throughout the home and the front door is almost directly in line with another door leading into a foyer containing one large guest closet and a spacious linen closet with a large storage space. The wallpaper is of the same design as the living room.

Extra Large Bedroom Window

To the left and west of the foyer is the bathroom with a floor of deep blue linoleum. The wall around the



2928 Ninth Ave., West . . . Five-room Cape Cod Colonial in Lafayette Heights.

bath is of linoleum and there is a built-in shower. The pink linoleum is nicely set off by an off-white ceiling and walls and chrome fixtures. There is one large window. The master bedroom has one extra large window facing the front of the house and another on the north side. There is a large clothes closet and the wallpaper is of peach-colored design with white trim.

The second bedroom likewise has two windows for proper ventilation and light and is finished in canary yellow wallpaper with a flower design. It, too, has a clothes closet with plenty of storage space. Off the living room to the south

of the front door is the large kitchen with a vari-colored linoleum floor of squared design. Walls are painted in off-white and there are built-ins with blue marbled worktops. There is a chrome and red-colored featured stripe around the worktops and a large window above the sink.

Five Windows in Basement

A door from the kitchen leads to a small hallway, opening both on the door to the outside drive and the basement stairs. The hall, like the kitchen, is in off-white. The basement contains five steel-cased windows for light and ventilation.

There are combination doors for both the front and back doors, suitable for screens in the summer and storm doors in the winter. The Lafayette Heights project has City water, lights and gas and an Indianapolis Railways bus provides service for the neighborhood.

REVERSAL SEEN IN RURAL TALK

U. S. Official Points to Restrictions on Autos And Tires.

You can look for the slowing down and, in some instances, a complete reversal of the migration of city dwellers to the suburbs for the duration of the war.

That is the opinion of Fred W. Catlett, a member of the Federal Home Loan Board. He attributed the changes to the scarcity of new automobiles and tires and said that "transportation restrictions may bring a movement to 'stay close to town.'"

Mr. Catlett predicted greater activity in residential sales and rentals in the older sections of cities which have suffered from decentralization in the past 15 years—a movement which has been recently accelerated by the construction of low-cost homes on the edges of cities for occupancy by workers in war industries.

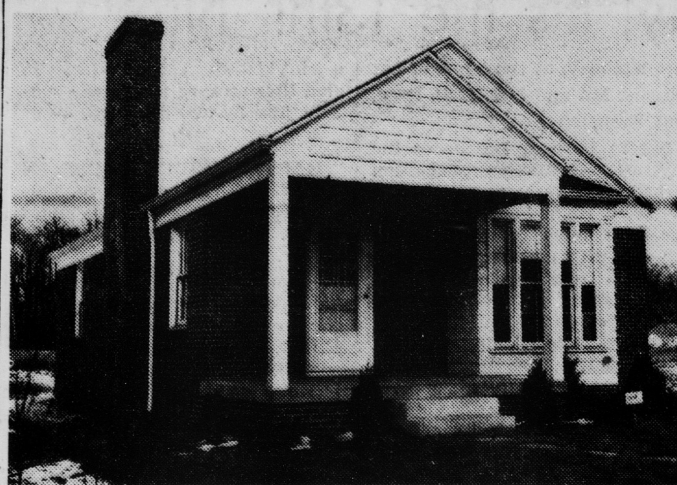
"Restricted in the use of cars of their own, many employees of centrally located defense plants, as well as other persons, will want to live near their work . . . near the business and recreational centers," Mr. Catlett said. He added that this tendency should have a favorable effect on older houses close to streetcar and bus lines.

13 HOMES SOLD BY N. SIDE REALTORS

North Side Realtors this week announced the sale of 13 homes.

The houses were 1615 Cunningham St., 712 N. Warman Ave. and 465 N. Goodlet Ave. by E. Kirk McKinney Co., Inc.; 5953 Rosslyn Ave. and 149 Berkeley Road by Bert Edwards; 521 E. 59th St. by Ford Woods & Co., 5324 Broadway by Bridges & Graves, 2114 N. Alabama St. by W. A. Hackmeyer, 5261 Central Ave. in a cross transaction between McKibbin-Elam Co. and Pieser & Reilly, 3424 Birchwood Ave. by Marion Stump and 20 Meridian Place, 5601 E. St. Clair St. and 140 Buckingham Drive by American Estates Co., Inc.

Graces Far North Side



1808 E. 62d St. . . hardwood floors throughout.

Trim Brick Bungalow Has Large Colonial Living Room

This five-room brick bungalow with white wood trim was built by the Bridges & Graves Co. at 1808 E. 62d St.

Featuring hardwood floors throughout, this livable unit is located in the far north side sector which is rapidly being built up.

The front door, with a combination for screen and glass, has 12 small paneled windows at the top and leads directly into the long colonial styled living room. There are two large windows which afford an abundance of light and the wallpaper is paneled in a gray tone with an off-white ceiling.

Linen Closet Extra Large

On the west side of the room is the white-finished fireplace with a brick front and hearth. To the east front of the room is the dinette with a huge three-sectioned picture window. The wallpaper has a blue background with a white criss-crossed flower design.

With white fixtures and a similar-colored dado, the dinette has a large three-shelved built-in cabinet for dishes with a glass paneled front. The shelves are finished in white against an interior background of blue.

A swinging door leads from the dinette to the kitchen where the floor is of blue marbled linoleum. The walls and ceiling are light cream and there are built-ins. Worktops are of deep red with a chrome feature strip and there is one large window and a doorway leading to the side drive.

North of the kitchen, a door opens on a hallway finished in gray paper and white ceiling. The bathroom is to the right of the hall and is finished in baby pink and white.

Division Construction Co. Selected

WINDOW SHADES

In homes in Lafayette Heights

Furnished and Installed by

Nicely Awning & Shade Co.

1315 Winfield Ave. BE-3188.

The Division Construction Co. SELECTED

LUMBER & MILLWORK

AND

BUILDING MATERIALS

For the Homes in Lafayette Heights Featured on This Page

FURNISHED BY

HARRY C. ENT

MATERIALS, INC.

1415 Commerce Ave. CH-4821

★ PLUMBING

In the Division Construction Co. Featured Homes in Lafayette Heights

ROBERT WOODS

2708 2d Ave. East, Mars Hill

Phone BE-3388-3

★ SHEET METAL WORK

for the Division Construction Co. featured house in Lafayette Heights

QUALITY HEATING & SHEET METAL CO.

936 Mass. Ave. RI-1226.

★ ELECTRICAL

FIXTURES AND WIRING

In the Division Construction Co. Featured House in Lafayette Heights

DYE ELECTRIC SERVICE

2523 E. 10th St. CH-3331

ALL PLUMBING WORK

In Featured Home of BRIDGES & GRAVES CO.

Done by

ALBERT C. ZICKLER

1101 N. Rural CH-1158

YOUNGSTOWN

ALL STEEL Kitchen Cabinets

VENETIAN BLINDS • WINDOW

SHADES • LINOLEUM • UNIFORM

SWING OVERHEAD GARAGE DOORS

• FREE ESTIMATE

Patterson Shade & Floor Covering Co.

118 S. PENN. ST. RI-1496.

OPEN For INSPECTION

In the Division Construction Co.'s

LAFAYETTE HEIGHTS

16 Houses Completed—8 Under Construction

FOR SALE BY

R. E. PECKHAM

LI-2556 BR-0402

CONSTRUCTION MGR.

R. H. SHELHORN

LI-1040 BR-2996

GOOD LUMBER

Furnished for the Featured Home on This Page Built by

BRIDGES & GRAVES CO.

BURNET-BINFORD LUMBER CO.

1401 West 30th St. TA-3315

★ CONCRETE

Don't Forget to Order the Best

CENTRAL PLANT MIXED ★

Guarantees Uniform Workability and Strength

Ready Mixed Concrete Corp. WA-2412

LUMBER

BURNET BINFORD

LUMBER CO.

1401 W. 30th St. TA 1401 3315

LOCAL GAIN SHOWN IN HOME BUILDING

R. Earl Peters, State FHA director, said today that home building plans in this territory, reflected in the volume of applications for FHA residential mortgage insurance, showed a rise last month over the same month a year ago.

This is but the start in an upswing of housing in this territory, according to Mr. Peters.

Division Construction Co. Selected

LINOLEUM FLOORS

FOR THE HOMES IN Lafayette Heights

United Rug & Linoleum Co.

1315 Winfield Ave. BE-3188.

SPECIAL OFFER

For One Week Only

Columbia

CHATEAU

2" WOOD SLAT

VENETIAN BLINDS

With New Enclosed Head!

10% Off of Our Regular Low Price

Made-to-Order

Now you can have blinds with the attractive enclosed head, plus all these famous "Chateau" features at a NEW LOW PRICE.

• Trim, 2" kiln-dried wood slats.

• Choice of slat and tape colors.

• Worm gear tilting device.

• Positive Cord Lock.

• Fine quality enamel finish—resists chipping.

CALL LINCOLN 5313 FOR FREE ESTIMATES

UNITED

RUG & LINOLEUM CO.

139 W. Wash. St. LI-5313

HOOSIER FENCE

Factory, Lawn, Farm, Estate

STATE-WIDE SERVICE

Free Estimates—Easy Terms

Call HU-8361—Night, HU-6665

ADVANCE PAINT

Is Proud to Have Furnished

DIVISION CONSTRUCTION

Company with

Decorators' 1942 Sample Books Nos. 1 and 2 Are Ready

WALL-PAPER and PAINT

For the Homes in Lafayette Heights

ADVANCE PAINT CO.

FACTORY STORE

338 N. Capitol Ave. LI-7388

LOANS

on Everything

Diamonds, Watches, Musical Instruments, Cameras, Clothing, Shotguns, Etc.

The CHICAGO JEWELRY CO., Inc.

146 E. WASHINGTON ST.

BUSINESS DIRECTORY

—Merchandise and Service—

BUY DEFENSE STAMPS Here!

H. H. MAYER'S

The Gem Crest Store

JEWELERS • OPTICIANS

42 W. WASHINGTON

GUARANTEED Watch Repairing

AT OUR USUAL LOW PRICES

RITE'S

43 S. ILL.

SEE the new "EVERSHARP" PEN and PENCIL SETS

\$8.75 Guaranteed for Life

STANLEY JEWELRY CO.

113 W. Washington Lincoln Hotel Side

Three Stores

GLOVES

Wood with leather palm for driving, 1.65

abric gloves, 1.50

Piercing, 2.15 and 2.95

Harry Levinson

TRY A WANT AD IN THE TIMES. IT WILL GET QUICK RESULTS.

HEATING

ECONOMY FURNACES Are Installed in All Division Construction Co. Homes in Lafayette Heights

If you are modernizing your home, BE SURE to have a reliable, experienced heating firm recondition or replace your furnace. It takes an expert to do the job properly.

FORTUNATELY

we still have an excellent stock of equipment and can satisfy your needs.

HOWEVER

Because of war needs, there is a general shortage of materials. If you'll need equipment within the year . . . buy now.

QUALITY

HEATING & SHEET METAL CO.

FURNACES • TINS • ROOFING

936 MASS. AVE. RI-1226

GEO. J. EGENOLF

MACHINIST

181/2 W. South LI-6212

Buy a HOME

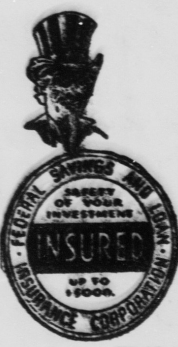
FIXED MONTHLY PAYMENTS are part of the contract when you buy a home. They can not be raised.

Because you own your home, it can not be sold, requiring you to vacate.

It's smart to buy now while homes are available. Remember, we can lend you the largest part of the purchase price.

Railroadmen's FEDERAL SAVINGS AND LOAN ASSN. 27 Virginia Avenue Indianapolis, Indiana

YOUR SAVINGS *Insured* AGAINST ANY LOSS WHATSOEVER UP TO \$25,000 by Agency of U.S.Gov't



and GOOD RETURNS

Develop That Profitable Habit "REGULAR SAVINGS" EACH Week or EACH Month

Start a THRIFT SAVINGS Account TODAY

COLONIAL SAVINGS & LOAN ASSOCIATION

28 S. W. ST.

Member Federal Savings and Loan Insurance Corporation

FORD FENCE

Lawn, Factory Fence

State-Wide Service—Delivery or Erected

BR-5411, Night BR-1235—5374 Winthrop

FORD FENCE CO.

ACME WALLPAPERS, INC.

337 Massachusetts Ave.

LI-4403

"IT'S A DARB"

See the feature house on this page, 1808 E. 62d is a new brick bungalow; 2 bedrooms, one 13-1/2 ft.

\$6,500

At Central Ave. bus terminal, just outside of city limits. Better see it. OPEN 2 TO 5 SUNDAY

BRIDGES & GRAVES CO., BLDGS.

243 N. Del. RI-3477. BR-1426.

Tonight

A Most Attractive New House Is Featured

1808 E. 62ND

GOLDSTEIN'S

Lighting Fixtures

Were Chosen by Bridges & Graves (Builders)

Goldstein's

16 E. Wash.

CHAS. W. STOLTE

Plumbing and Heating Contractor

888 Mass. Ave. LI-7920

Res. CH-7920

FENCE

for EVERY PURPOSE

Call LI-9531 for Free Estimating Service on Material Only or Erection Complete

Easy Payments if Desired

SEARS ROEBUCK AND CO.

DECORATORS

Get Your 1942 SAMPLE BOOKS TODAY

BRIDGES & GRAVES Selected

ACME WALLPAPERS

For the House Featured Today

ACME WALLPAPERS, INC.

337 Massachusetts Ave.

LI-4403

FLAN SPRING LANDSCAPING

EXPERT SERVICE FREE AT</