

BEARDALL GIVEN ANNAPOLIS POST

Roosevelt Aid Succeeds
Rear Admiral Willson at
Naval Academy.

WASHINGTON, Jan. 6 (U. P.).—Rear Admiral John Reginald Beardall, President Roosevelt's Naval aid, was ordered to duty by the Navy today as superintendent of the Naval Academy at Annapolis.

Capt. John Livingston McCrea relieved Beardall as Naval aid to the President. McCrea has been aid to Admiral H. R. Stark, Chief of Naval Operations.

Beardall succeeds Rear Admiral Russell Willson, who now is Chief of Staff of Admiral Ernest J. King, Commander-in-Chief of the Fleet.

LEGION STUDIES DEFENSE

A special invitation has been issued to defense committees of various American Legion Posts to attend the monthly meeting of the 12th District at 8 p. m. Thursday at 119 E. Ohio St.

Kept Calm in Jap Raid



Mrs. Sandy, Jacqueline and Billy. . . Even the children were calm.

No Sign of Hysterics, Says Eye Witness on Return Here

"Everyone was very calm—I didn't see one case of hysterics!"

Every account seems to bear out the bravery of Americans under fire at Pearl Harbor, just as does that told by Mrs. William A. Sandy, who arrived in Indianapolis Sunday from Hawaii with her children, Jacqueline, 7, and Billy, 5.

Mrs. Sandy, the wife of Maj. William A. Sandy, a flight surgeon at Wheeler Field, on the island of Oahu, will stay with her parents, Mr. and Mrs. W. H. Minter, 3227 Park Ave., for the duration of the war.

"It all happened so quickly, and we were used to seeing planes around anyway," she said of the Japanese raid. "Then we heard the bombs and guns, and knew something was happening."

"I was so stunned that I wasn't afraid. The children took it very calmly. Everyone was calm; there wasn't a case of hysterics, even among the children."

The officers' wives and children stayed in their quarters at Wheeler Field until 8 p. m.—about 12 hours—then were moved in buses and trucks to Honolulu. They spent that night on a schoolhouse floor and the next day were assigned to homes.

"I'd like to pay tribute to the Hawaiians," Mrs. Sandy said, "they were so helpful and wanted so much to give us every aid. The Red Cross, too, was wonderful. In no time at all they had things running smoothly."

Maj. and Mrs. Sandy are former Indianapolis residents. He was a psychiatrist at the Central State

Hospital for the Insane from 1936 to 1939, when he was called to active duty with the medical Corps at Chanute Field, Rantoul, Ill.

He was stationed there until 10 months ago when he was ordered to Hawaii. Mrs. Sandy doesn't worry so much about him, but she's mighty glad to be home with the children.

"I feel that he's big enough to take care of himself, but my, I'm glad to get the children home!" she said.

Mrs. Sandy attended Technical High School and the City Hospital Nursing School.

PLOT TO STEAL TIRES SUSPECTED, 4 HELD

Four men faced vagrancy charges today pending a police investigation of the attempted theft of automobile tires from a parking lot in E. Washington St., 500 block, last night.

Howard Egloff, 322 Eugene St., a merchant policeman, captured a 33-year-old man as he ran through the lot where new cars, the property of Superior Chevrolet Co., 552 E. Washington St., were parked.

Mr. Egloff told officers the man was carrying a tire wrench and that two other men jumped into a car and drove away.

Investigation showed that the tire and wheel of one new car was missing and that a wheel of another had been tampered with.

After police arrested the man, two other men later came to Headquarters to inquire about him and were also placed under arrest. The fourth man was captured in a downtown hotel.

Detectors said all four were being held as suspects in tire stealing, inspired, they said, because of the quota recently placed on tires by the Government.

WOMEN TO GET JOBS

WASHINGTON, Jan. 6 (U. P.).—Selective Service Director Lewis B. Hershey said in a radio address last night that "a gradual, but constant" substitution of women workers for those men who are fit to fight could be expected in the next few months.

PROMOTE FRANKLIN JR.

WASHINGTON, Jan. 6 (U. P.).—Franklin D. Roosevelt Jr., the President's son, has been promoted from Ensign to Lieutenant, J. G., the Navy said today. He is a member of the Naval Reserve and has been on active duty since last fall.

BATTLE RAGING NEAR KHARKOV

Fierce Fighting Reported;
Reds Push On Fast
In Crimea.

LONDON, Jan. 6 (U. P.).—Russia's southern army has opened a major offensive against Kharkov, great industrial center of the Donets River basin.

Moscow announced that the Red Army had swept 45 miles across the Kerch Peninsula in the Crimea. An official Russian broadcast heard today by the United Press in London said Red forces have reached the Sea of Azov north of Feodosiya, thus consolidating their reconquest of the peninsula.

Unofficial dispatches reported a ferocious big-scale battle within 30 miles of Kharkov between the army of Marshal Semyon Timoshenko, which first turned the tide against the Germans by retaking Rostov on Don, and the once triumphant army of Field Marshal Walter Von Reichenau.

Stockholm reports said there were indications that the Germans were preparing to retreat from Kharkov before the hammer blows of the Russians who had swept down suddenly from the area between Kursk and the Don River.

Retreat From Kharkov

Successful development of the Russian drive would be a threat to the entire German position in the south.

Freeing of Kharkov would leave only Kiev, 250 miles to the west, in German hands among the four big cities of European Russia.

A dispatch to the Russian army newspaper Red Star reported that shock troops under Lieut. Gen. V. N. Lvov had dislodged the Germans from almost the whole of the vital Kerch Peninsula, at the eastern end of the Crimea, by a 45-mile advance in 48 hours.

Axis reports indicated that German, Italian and Rumanian troops were attacking Sevastopol, the naval base on the southwest corner of the Crimea, with intensified savagery in a desperate attempt to capture it and strengthen their position.

Ski Troops Active

Last week the Russians announced the capture of Feodosiya, only 95 miles from Sevastopol, and it was indicated that their present line was substantially nearer.

Kulbyshvich dispatches noted that in capturing Kozelsk, 130 miles south of Moscow on the southern central Moscow front, the Russians had freed the first town inside the Smolensk administrative district. It is reported to have established headquarters.

On the Moscow front, advanced Russian shock troops on skis and horseback had been sent to dislodge the Germans holding Moshalsk. Dispatches indicated the Russians had pushed considerably beyond Moshalsk, leaving more than 100,000 Germans in what threatened to be their death trap.

Russian armored forces and heavy artillery had been massed in the Maloyaro Slavets-Borovsk sector to the south for the kill, it was reported, while Russian big guns opened a bombardment on the Germans.

ALL TIRES ON PARKED AUTO ARE PUNCTURED

John Barton, 1618 N. Delaware St., parked his car on N. New Jersey St. in the 100 block last night and was gone for some time. When he returned he found that someone had punctured all four tires on his car.

SINGAPORE SAVES WATER

SINGAPORE, Jan. 6 (U. P.).—Authorities on Singapore Island have requested the utmost economy in the use of water, even for baths, and the washing of vehicles, was prohibited.

War Moves Today

By LOUIS KEEMLE
United Press War Analyst

The increasing Japanese threat in Malaya brings into focus the immediate problem of the Allies in the Western Pacific—the urgent need to defend Singapore at all costs.

The time element is vital. The Japanese are racing to establish themselves in the great British naval station, last major allied base in the Far East, before enemy reinforcements can arrive. Under the circumstances, the nearest practical aid would have to come from Burma, and it is not certain that Gen. Wavell has enough British, Indian and Chinese troops with the necessary equipment to attempt an immediate offensive. The problem is complicated by the necessity of guarding the Burma Road, China's life-line of supply, and the gateway to India.

Burma extends a slender finger all along the border of Japanese-held Thailand down into the Malaya Peninsula.

It would be possible, with sufficient forces, for the British to drive from southern Burma across the neck of the peninsula to Bangkok, thus cutting the Japanese landward communications.

However, a full British concentration in southern Burma would leave the northern area subject to a Japanese counter-attack from Indo-China towards Mandalay and the Burma Road.

The Chinese, nevertheless, are not only pouring into Burma but are reported to be massing across the border in Yunnan (Kunming) province of South China. This suggests preparations to guard the northern flank while the attempt to rescue Singapore is launched.

While military experts doubt Gen. Wavell's ability to open such an of-

fensive at once, the urgency of the situation might compel him to. Military secrecy permits no estimate of Gen. Wavell's actual strength in Burma. He has been on the job preparing for this emergency for months.

It is certain that Indian, British and Chinese forces have been arriving in Burma in large numbers, and only last Friday the British Malayan command announced that "considerable help" is on the way to defend the peninsula.

The importance of Singapore at this stage of the war lies chiefly in its relation to the Dutch East Indies. If the Japanese take it, two claw-like Japanese pincers would stretch down towards the Indies from the Philippines on the east and Malaya on the west.

With possession of the oil, mineral, rubber and food resources of the Indies, the Japanese would be girded for a long war, which otherwise they might not have the strength to carry on.

Losing Race With Police Costs Youthful Motorist \$20

Eric Dodge, 18, paid \$20 in Municipal Court today for finding out that the police can catch his 1937 model auto.

He found it out in the early morning hours of Dec. 9 after he whizzed past a police cruiser to invite a chase. Patrolmen John Foran and Wilbert Gruner chased him all right, and after breezing in and out of North Side alleys for two hours, they still couldn't catch him.

At first, they thought they were on the trail of a bandit, reported to be fleeing in an auto of the same model.

"Why, you were playing cops and robbers," Judge John L. Niblack observed.

"Yeah, I was playin' with the police," Eric said with a grin. "I didn't think they could catch me."

The big tail light on his car saved him from being shot," Patrolman Foran declared. "The bandit car was supposed to have a small tail light."

A former dirt track race driver, Patrolman John Jones, joined the chase. And Patrolman Jones won another race. He pushed Eric Dodge's pride and joy to the curb at 3100 College Ave.

Besides fining the youth \$10 and costs, Judge Niblack also suspended his driving license for 60 days. Dodge lives at 2220 Central Ave.

WEAR MOSQUITO MASKS

SINGAPORE, Jan. 6 (U. P.).—Imperial forces battling the Japanese in the jungles today wore mosquito masks in the steamy Mangrove swamps and mudflats along both the Bernam and Perak Rivers.

AYRES DOWNSTAIRS STORE



Combination SALE!

9x12 Feet Sizes

RUG and PAD

A Regular \$52.00 Value!

FOR ONLY \$33.75

Imagine a big 9x12 rug plus a pad for such a low sale price. The rugs are seamless axminster quality in Oriental, modern, leaf or colonial hooked design. Beautiful rugs that have long wearing qualities. Added to this value is a durable rug pad that adds years of extra life to your rug.

DEFERRED PAYMENTS AVAILABLE!

—Downstairs at Ayres.

9x12 Felt Base RUGS

Felt base rugs in kitchen or bedroom style. Many different colors and designs. Fine for decorating. \$3.95

27-In. Hall and Stair CARPET

All-wool face carpet for your stairs or hall. Leaf or tone on tone design. Green or Tan. Perfect quality. Reg. \$3.95 value. \$2.69

Manufacturer's Clearance of Odd Bolts and Seconds of

Woven Homespun Drapery Fabrics

59c Yard

50 Inches Wide!

Actual values from 79c to \$1.29 per yard. Solid colors, woven plains and stripes, jacquard designs, plain whites and novelty oyster shades. Extra heavy qualities. 5 To 25 yard lengths for making draperies and slip covers. —Downstairs at Ayres.

Suede SHOES



Reg. \$3 to \$5 American Girl and Betty Shaw Style Shoes \$1.89

Black and brown suede shoes in discontinued styles. Pumps and oxfords. 4 1/2 to 9 in the group. —AAA to B.

Reg. \$5 American Girl ARCH SHOES

\$3.69

Black and brown suede in pumps or ties. Cuban heels. Sizes 4 1/2 to 11.



\$4 and \$5 American Girl Betty Shaw Style Shoes

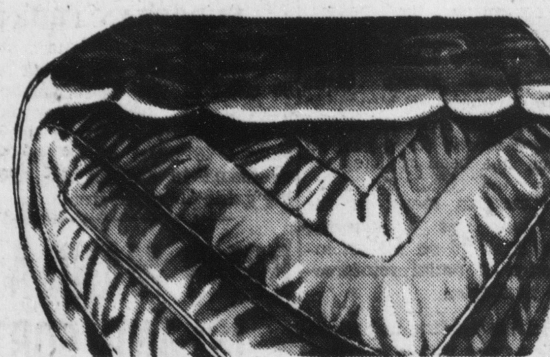
\$2.89

Just 201 pairs. Black, black and brown, leather and gabardine pumps. Medium and high heels. 4 1/2 to 9 in the group.

125 Pairs Regular \$4 ARCH SHOES

Odd styles of Betty Shaw arch shoes in black or brown. Cuban heels, pumps and oxfords. Sizes 4 1/2 to 9 in the group. \$2.89

—Downstairs at Ayres.



Regular \$5.95 Value! Rayon Taffeta

"Perma-Fluff" COMFORTS

Rayon taffeta reversible solid colors and two-tone comforts. 72x84-inch size. Patented "Perma-Fluff" filling will not lump or get hard. \$3.99

"Fieldcrest" Double Blankets \$2.98

72x84-inch double blankets in 85% cotton and 5% wool. Plaid designs. 4 lbs. weight. 4-Inch matching binding. Blue, Green, Gold, Peach and Orchid.

72x90-Inch Blankets \$2.99

Large size solid color blankets by "Fieldcrest." Jumbo sizes in pastel colors of Blue, Green, Rose and Orchid. Just 38 of these.

"Berwick" Wool Blankets \$5.05

100% wool 72x84-inch blankets. 4-Inch rayon satin binding. Royal, Blue, Green, Rose and Rust.

Solid Color Blankets \$2.99

80% wool and 50% rayon single blankets. 72-84-Inch sizes, 4-inch rayon satin binding. Colors in Royal, Dusty Rose, Wood Rose, Light Blue and Green.

"Fieldcrest" Sheet Blankets \$1.00

72x90-Inch pastel sheet blankets with matching rayon binding. Colors in Blue, Green, Rose, Orchid, Peach and White.

Beacon 70x80 Blankets 69c

Sheet blankets by Beacon. 70-80 Inches with multi-colored border. Blue, Green, Rose, Peach and Orchid colors. Irregulars.

"Army" Reject Comforts, Each \$1.99

Khaki colored 72x84-inch comforts. All cotton filled, 5-pound weight. Stitched for long wear.

"Army" Reject Comforts \$2.99

Khaki colored blankets, 72x84 inches; 3 1/2 pounds, with whipped cord edges. —Downstairs at Ayres.

Save in Our JANUARY

White Goods SALE!

Pacific Mills "Truth" Tubings 23c Yd.

Strong pillow tubing from Pacific Mills. 36, 40 and 42-inch widths. 68x72 Thread count.

87-In. Brown Sheet 25c Yd.

Remnants from 2 to 30 yards in brown sheeting 87 inches wide. Heavy quality.

80-Sq. Bleached Muslin 12 1/2c Yd.

Fully bleached muslin of 80 square construction. Long remnant lengths, fine quality.

36-In. Outing Remnants 19c Yd.

All the new colors and patterns in stripes and florals. Full 36 inches wide.

Rayon French Crepe 39c Yd.

Plain rayon French crepe remnants in blue, pink, tealrose and white. Two to 20-yard lengths.

54-Inch New Spring Woolens \$1.19 Yd.

A new shipment of lovely new woolens for spring. Each bolt has wool content label attached. —Downstairs at Ayres.

WHY BE BALD?

THE THOMAS

321 Illinois Bldg., Entrance 17 West Market

Hours: 11 A. M. to 8:30 P. M. Saturdays, 11 A. M. to 7 P. M.

Write for free booklet: "How to Retain or Regain Your Hair"

PUT OUT THAT THIRST! DRINK AMERICA'S FAVORITE FLAVOR WITH CANADA DRY QUALITY

ZIPPY AND SPARKLE

ACT QUICKLY! 2 BIG GLASSES ONLY 5¢

FOR ALL OCCASIONS... Say it with Flowers

The ALLIED FLORISTS ASS'N of Indianapolis