

# MORE FACTORIES FOR STATE URGED

Indiana Is 'Sample' in Planning Board Report on Midwest; New Industries, Flood Control, Larger Main Highways Recommended.

By DANIEL M. KIDNEY  
Times Staff Writer

WASHINGTON, April 9.—Indiana and the surrounding states have some of the finest farm land in America but what the region really needs is a crop of new industries.

That in brief is the findings of the National Resources Planning Board report made public here today. The Indiana section is designated as Region 4 and includes Indiana, Illinois, Kentucky, Michigan, Ohio, West Virginia and Wisconsin.

The report, which is included with those from other regions throughout the United States, was compiled and submitted from the Indianapolis field office of the board by L. V. Sheridan, counselor for Region 4.

A four-point program for utilization and conservation of the natural resources of the region was laid down as follows:

1. Development of their use in a manner that will conserve their potential capacity, in so far as conservation is compatible with utility.

2. Restoration of renewable natural resources that have been depleted.

3. Expansion of appropriate industry to provide greater diversified opportunities for employment throughout the region.

4. Provision of ample facilities for research and the equipping and educating of people to take advantage of employment opportunities.

Throughout the main text of the regional report, Indiana often is cited as the sample state.

"The State of Indiana is typical of much of the region, and there may be found in the area a wide diversity of manufacturing," the report states.

"Some kind of industry exists in every one of the 92 counties of the State.

**Wide Variety Now**  
"The industrial areas of the State manufacture a wide variety of articles and products. More than 64 per cent of the population of Indiana lives in cities, and most of these people depend upon some form of industry for a livelihood.

"The same is true of Illinois and Ohio and of most of Wisconsin and Michigan.

Chapter headings of the regional report are as follows:

**FORESTS**—Restoration through public ownership and operation of forests on at least one-half of the hilly and mountainous areas—expedite acquisition in Federal forest purchase units—expansion of research work of the Forest Products Laboratory as a step to establishment of new industries using forest products.

**PASTURE LANDS**—Creating of experimental areas and purchase of submarginal land suitable for "re-grassing" rather than forests.

**CROPLAND**—Adjustment of land use for more diversified production of food and industrial crops.

**LAND CLASSIFICATION**—Through State laws and on a county zoning basis.

**Park Development Urged**  
**RECREATION**—Development of facilities under direction of the States as planned by the National Park Service.

**WILDLIFE**—Ratification of treaty regulating commercial fisheries of the Great Lakes by Canada and the States involved at once. Continue conservation programs.

**MINERALS**—Readjust freight rates to enable freight transportation of coal from Illinois, Indiana, and western Kentucky to Minnesota and to ports in Wisconsin and Michigan, in order to aid summer employment of miners. Encourage clay products where timber resources are depleted. Promote use of local stone.

**INDUSTRY**—Development of suitable industry in all parts of the region to stabilize employment for the 18,000,000 urban dwellers and the surplus population in farming and mineral areas.

**WATER POWER**—Investigate the possibilities of power development in



L. V. Sheridan

coal mining areas, as an aid to industrial development.

**GROUNDED WATER**—Promote research in conservation and new uses.

**INDUSTRIAL POLLUTION**—Continuation of research and cooperation with industry to control industrial pollution.

**FLOOD CONTROL**—Readjustment of flood plain uses in both urban and rural areas to provide additional channel storage in high water periods without damage to property.

**TRANSPORTATION**—Develop main highways and cut expense on little used roads. Provide State airport plan and link main lines with feeder branches. Co-ordinate rail, road, water and air transportation for present and future uses.

"Early completion of the St. Lawrence waterway to provide access to the Great Lakes of a large portion of ocean-borne shipping.

"Completion at an early date of the Little Calumet-Grand Calumet waterway, joining Lake Michigan with the Illinois River, including the deep draft channel from South Chicago to Lake Calumet and the lake carrier-barge interchange terminal in Lake Calumet."

**PERSONNEL**—Development of a co-ordinated program of industrial personnel training by planning, industrial, educational and labor authorities.

**HOUSING**—Development of a housing pattern adjusted to the industrial pattern of the region by the associated state planning boards.

**MUNICIPAL PLANNING AND GOVERNMENT**—Development of formulae for control of development in suburban fringe areas by the Land Committee of the National Resources Planning Board.

Determination of methods of rehabilitating the central districts of cities by the National Resources Planning Board. In co-operation with state planning boards, local planning agencies, real estate, loan and civic organizations.

**MOTHERS' CHORUS TO GIVE PROGRAM**  
The Speedway Mothers' Chorus under the direction of Mrs. Helen Thomas Martin will sing in services at the Speedway Christian Church at 7:30 p. m. tonight.

Soloists will be Mrs. Harold Marvel, soprano; Mrs. Rose Kruetzinger, mezzo-soprano; Mrs. Fred Kellam, contralto. Mrs. Margaret Borschers will be accompanist.

The Rev. Howard Anderson is pastor of the church.

## IN INDIANAPOLIS

Here Is the Traffic Record

County City Total		
1940	8	21
1941	24	19

—April 8—

Accidents... 15 Injured... 2

Arrests... 62 Dead... 0

**TUESDAY TRAFFIC COURT**

Cases Convicted

Violations tried tions paid

Speeding... 14 14 \$62

Reckless driving... 4 4 28

Failure to stop at through street... 8 7 13

Disobeying traffic signals... 11 8 17

Drunk driving... 1 0 0

All others... 56 41 52

Totals... 94 74 \$172

**MEETINGS TODAY**

Alpha Omicron Alpha, Psi chapter, meeting, 1 p. m., Hotel Washington.

Marketing Research Club, dinner, 6:15 p. m., Hotel Washington.

Institute of Credit, meeting, 6:30 p. m., Hotel Washington.

Society of American Magicians, meeting, 7:30 p. m., Hotel Washington.

Indianapolis Chapter of United Nations, meeting, 7:30 p. m., Hotel Washington.

Leons Club, luncheon, Claypool Hotel, noon.

Kivans Club, luncheon, Columbia Club, noon.

Fordham Alumni Association, luncheon, Hotel Severin, noon.

12th District American Legion, luncheon, Board of Trade, noon.

Sigma Alpha Epsilon, luncheon, Board of Trade, noon.

Y. M. C. A. Camera Club, meeting, Central Y. M. C. A., 7:30 p. m.

Young Men's Discussion Club, dinner, Y. M. C. A., 6 p. m.

Delta Theta Tau, luncheon, Seville restaurant, noon.

Co-Operative Club of Indianapolis, luncheon, Columbia Club, noon.

Indianapolis Junior Chamber of Commerce, luncheon, Canary Cottage, noon.

Hi-Plus Club, meeting, Chamber of Commerce, 7:30 p. m.

Indiana Apartment Owners' Association, luncheon, Hotel Washington, noon.

Non-Day Holy Week Services, English Theatre, 12:10 p. m.

Young Men's Discussion Club, 6 p. m., Y. M. C. A.

Twelfth District American Legion, luncheon, Board of Trade, noon.

Sigma Alpha Epsilon, luncheon, noon.

Notre Dame Alumni Club, luncheon, noon, Claypool Hotel.

Indiana Municipal League, meeting, 1 p. m., Claypool Hotel.

Indiana Omicron Alpha, Zone 7, dinner, 6:30 p. m., Hotel Severin.

**MEETINGS TOMORROW**  
Rockhinders Union No. 33, meeting, 7:30 p. m., Hotel Severin.

Indianapolis Real Estate Board, luncheon, 12:15 p. m., Washington Hotel.

Classical Association, annual meeting, all day, Hotel Severin.

Advertising Club of Indianapolis, luncheon, noon, Indianapolis Athletic Club.

Caravan Club, luncheon, noon, Murat Temple.

DL Club, luncheon, noon, Hotel Severin.

Construction League of Indianapolis, luncheon, noon, 231 N. Pennsylvania St.

Indianapolis Camera Club, meeting, 8 p. m., 110 E. 8th St.

Beta Theta Pi, luncheon, noon, Canary Cottage.

Lambda Chi Alpha Alumni Association, luncheon, noon, Russel Cafeteria.

Indianapolis Motor Transportation Club, Inc., luncheon, noon, Fox's Steakhouse.

Sigma Nu, luncheon, noon, Columbia Club.

**MARRIAGE LICENSES**

(These lists are from official records in the County Court House. The Times therefore, is not responsible for errors in names and addresses.)

Mayes E. Hodges, 31, R. R. 9, Box 458, Waneta A. Oliver, 26, of 1851 N. Talbot.

Glenn A. Ryker, 22, of 263 Union St., Southport, Ind.; Helen Stapleton, 23, of 108 N. Gladstone.

John Boyley, 36, of 3123 Iowa; Thelma Brooks, 21, of 2123 E. Minnesota.

Wayne Madison, 24, of 2319 Central; Maria P. Greig, 23, of 2319 Central.

Warren E. Turner, 21, of 317 N. Senate; Paul M. Wharton, 46, of 371 W. 26th.

Raymond A. Jerge, 23, R. R. 10, Box 419; Donna M. Mitchell, 20, of 25 S. Grace.

Ruth M. Wharton, 46, of 371 W. 26th; Georgia Bardwell, 46, of 2324 Highland.

Kenneth E. Orr, 22, R. R. 3, Box 202; Margaret E. Lane, 21, of 646 N. Beville.

**BIRTHS**

Stanley Dorothy Praeger, at St. Francis; Charles Helen Terhune, at City.

Peter Catherine Corsaro, at St. Vincent; Robert Earl O'Connell, at St. Vincent's.

James Ruth Williams, at Methodist; Robert Mary Moore, at Methodist.

**BOYS**

Robert Dorothy Langier, at Methodist; Ernest Loretta Prickett, at Methodist.

Willis Elizabeth Proffitt, at Methodist; Leonard Henrietta Woodward, at Methodist.

William William, at St. Vincent's; Kenneth Lois Mandel, at St. Vincent's.

Ornel Bernadette Chesbrough, at St. Vincent's; Dale Frances Dickinson, at St. Vincent's.

Harry Ida Kuncade, at St. Francis; Orville Mingie Crawley, at St. Vincent's.

**DEATHS**

John Beatty, 33, at Long, cerebral embolism.

Louise Rains, 67, at Methodist, acute cholecystitis.

Mattie Carpenter, 16, at City, nephritis.

Iris Stewart, 33, at 464 Agnes, chronic myocardiitis.

Leola B. Ruman, 52, at Long, carcinoma.

Kate Gispay, 75, at 1125 Polk, arteriosclerosis.

Mary Fraser, 46, at Methodist, carcinoma.

## MEXICO TO USE SHIPS OF AXIS

Appropriation of All 12 Seized Vessels May Be Precedent.

MEXICO CITY, April 9.—Mexico, having appropriated 12 German and Italian ships for its own use, was seen in Government and diplomatic circles today as establishing policy for all Western Hemisphere nations.

They particularly anticipated that Mexico's big neighbor to the north would follow the example soon, pointing to President Roosevelt's remark yesterday that he had ample powers to take over for United States use, Italian and German ships now held in "protective custody."

Call Berlin Envoy Home

Mexico anticipated stern diplomatic reaction from Berlin and Rome and there was talk that relations might be so strained they wouldn't hold. Apparently to beat Nazi protests, Foreign Minister Ezequiel Padillo ordered the Mexican Minister in Berlin to return home at once "to report on the situation." It was doubted in authoritative circles that he would return while the war continues.

Like the United States and other American nations, Mexico had taken Axis ships in her harbors (10 Italian, two German) into "protective custody." Last night she took the further step of taking them over for her own use, saying that she would pay "just" indemnities after the war.

Ships Never Delivered

Before the war, Germany and Italy received large quantities of Mexican oil and were to have delivered industrial products—in Italy's case, two new tank ships—in return. They didn't make good and Mexico suggests that the value of the ships approximates what is due her from Germany and Italy.

In Tampico, Capt. Arthur Jost, master of the German freighter Orinoco, and the masters of the Italian tankers taken there, asked an injunction, alleging that the government action had been unconstitutional. Judge Eugenio Sanchez set Sept. 29—over five months hence—to hear arguments and refused to issue any sort of an order for the interim. By that time the whole question probably will be definitely settled.

**INDUSTRIAL POLLUTION**—Continuation of research and cooperation with industry to control industrial pollution.

**FLOOD CONTROL**—Readjustment of flood plain uses in both urban and rural areas to provide additional channel storage in high water periods without damage to property.

**TRANSPORTATION**—Develop main highways and cut expense on little used roads. Provide State airport plan and link main lines with feeder branches. Co-ordinate rail, road, water and air transportation for present and future uses.

"Early completion of the St. Lawrence waterway to provide access to the Great Lakes of a large portion of ocean-borne shipping.

"Completion at an early date of the Little Calumet-Grand Calumet waterway, joining Lake Michigan with the Illinois River, including the deep draft channel from South Chicago to Lake Calumet and the lake carrier-barge interchange terminal in Lake Calumet."

**PERSONNEL**—Development of a co-ordinated program of industrial personnel training by planning, industrial, educational and labor authorities.

**HOUSING**—Development of a housing pattern adjusted to the industrial pattern of the region by the associated state planning boards.

**MUNICIPAL PLANNING AND GOVERNMENT**—Development of formulae for control of development in suburban fringe areas by the Land Committee of the National Resources Planning Board.

Determination of methods of rehabilitating the central districts of cities by the National Resources Planning Board. In co-operation with state planning boards, local planning agencies, real estate, loan and civic organizations.

**MOTHERS' CHORUS TO GIVE PROGRAM**  
The Speedway Mothers' Chorus under the direction of Mrs. Helen Thomas Martin will sing in services at the Speedway Christian Church at 7:30 p. m. tonight.

Soloists will be Mrs. Harold Marvel, soprano; Mrs. Rose Kruetzinger, mezzo-soprano; Mrs. Fred Kellam, contralto. Mrs. Margaret Borschers will be accompanist.

The Rev. Howard Anderson is pastor of the church.

**INDIANAPOLIS**  
The Committee to Defend America by Aiding the Allies today announced a rally for May 7 as a "move into a period in which we must prepare the mind of America for the conveying of goods across the Atlantic."

"Our task is to convince the American people that Hitler means exactly what he says when he proclaims that he intends to conquer the world," Ernest W. Gibson, national chairman, told the committee's New York chapter.

**SCHEDULES RALLY TO BACK CONVOYS**  
NEW YORK, April 9 (U. P.).—The Committee to Defend America by Aiding the Allies today announced a rally for May 7 as a "move into a period in which we must prepare the mind of America for the conveying of goods across the Atlantic."

"Our task is to convince the American people that Hitler means exactly what he says when he proclaims that he intends to conquer the world," Ernest W. Gibson, national chairman, told the committee's New York chapter.

**INDIANAPOLIS**  
The Committee to Defend America by Aiding the Allies today announced a rally for May 7 as a "move into a period in which we must prepare the mind of America for the conveying of goods across the Atlantic."

"Our task is to convince the American people that Hitler means exactly what he says when he proclaims that he intends to conquer the world," Ernest W. Gibson, national chairman, told the committee's New York chapter.

**INDIANAPOLIS**  
The Committee to Defend America by Aiding the Allies today announced a rally for May 7 as a "move into a period in which we must prepare the mind of America for the conveying of goods across the Atlantic."

"Our task is to convince the American people that Hitler means exactly what he says when he proclaims that he intends to conquer the world," Ernest W. Gibson, national chairman, told the committee's New York chapter.

**INDIANAPOLIS**  
The Committee to Defend America by Aiding the Allies today announced a rally for May 7 as a "move into a period in which we must prepare the mind of America for the conveying of goods across the Atlantic."

"Our task is to convince the American people that Hitler means exactly what he says when he proclaims that he intends to conquer the world," Ernest W. Gibson, national chairman, told the committee's New York chapter.

**INDIANAPOLIS**  
The Committee to Defend America by Aiding the Allies today announced a rally for May 7 as a "move into a period in which we must prepare the mind of America for the conveying of goods across the Atlantic."

"Our task is to convince the American people that Hitler means exactly what he says when he proclaims that he intends to conquer the world," Ernest W. Gibson, national chairman, told the committee's New York chapter.

**INDIANAPOLIS**  
The Committee to Defend America by Aiding the Allies today announced a rally for May 7 as a "move into a period in which we must prepare the mind of America for the conveying of goods across the Atlantic."

"Our task is to convince the American people that Hitler means exactly what he says when he proclaims that he intends to conquer the world," Ernest W. Gibson, national chairman, told the committee's New York chapter.

**INDIANAPOLIS**  
The Committee to Defend America by Aiding the Allies today announced a rally for May 7 as a "move into a period in which we must prepare the mind of America for the conveying of goods across the Atlantic."

"Our task is to convince the American people that Hitler means exactly what he says when he proclaims that he intends to conquer the world," Ernest W. Gibson, national chairman, told the committee's New York chapter.

**INDIANAPOLIS**  
The Committee to Defend America by Aiding the Allies today announced a rally for May 7 as a "move into a period in which we must prepare the mind of America for the conveying of goods across the Atlantic."

"Our task is to convince the American people that Hitler means exactly what he says when he proclaims that he intends to conquer the world," Ernest W. Gibson, national chairman, told the committee's New York chapter.

**INDIANAPOLIS**  
The Committee to Defend America by Aiding the Allies today announced a rally for May 7 as a "move into a period in which we must prepare the mind of America for the conveying of goods across the Atlantic."

"Our task is to convince the American people that Hitler means exactly what he says when he proclaims that he intends to conquer the world," Ernest W. Gibson, national chairman, told the committee's New York chapter.

## STRAUSS SAYS:

(1) You get a BUSINESS SUIT and TOWN SUIT (the coat, trousers and vest).

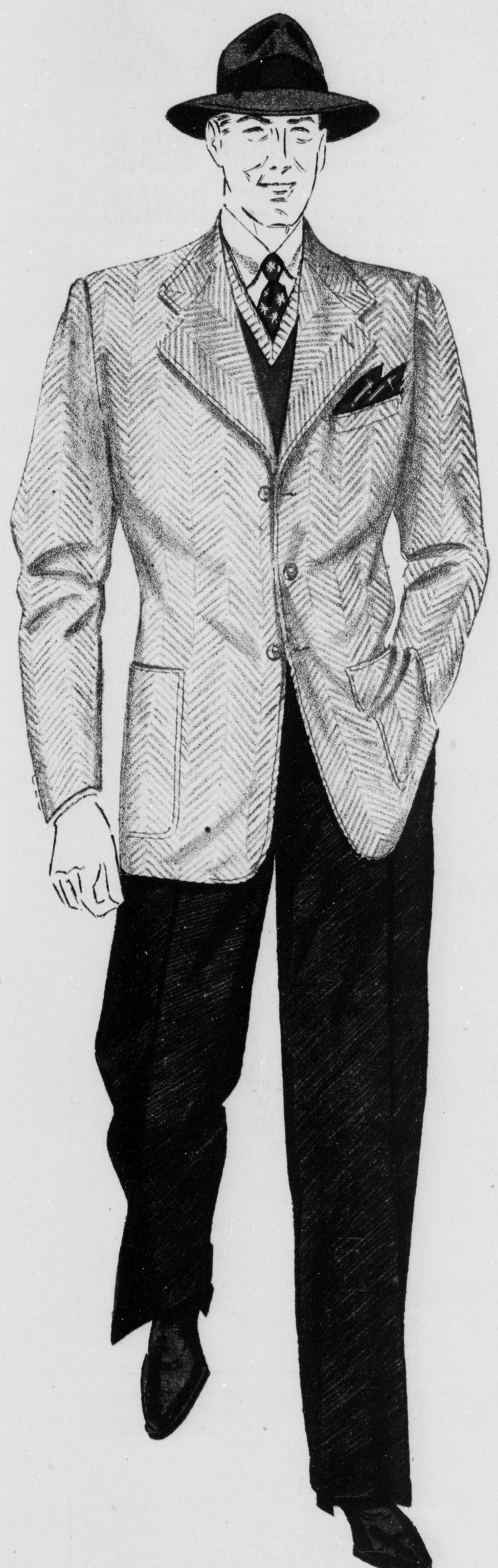
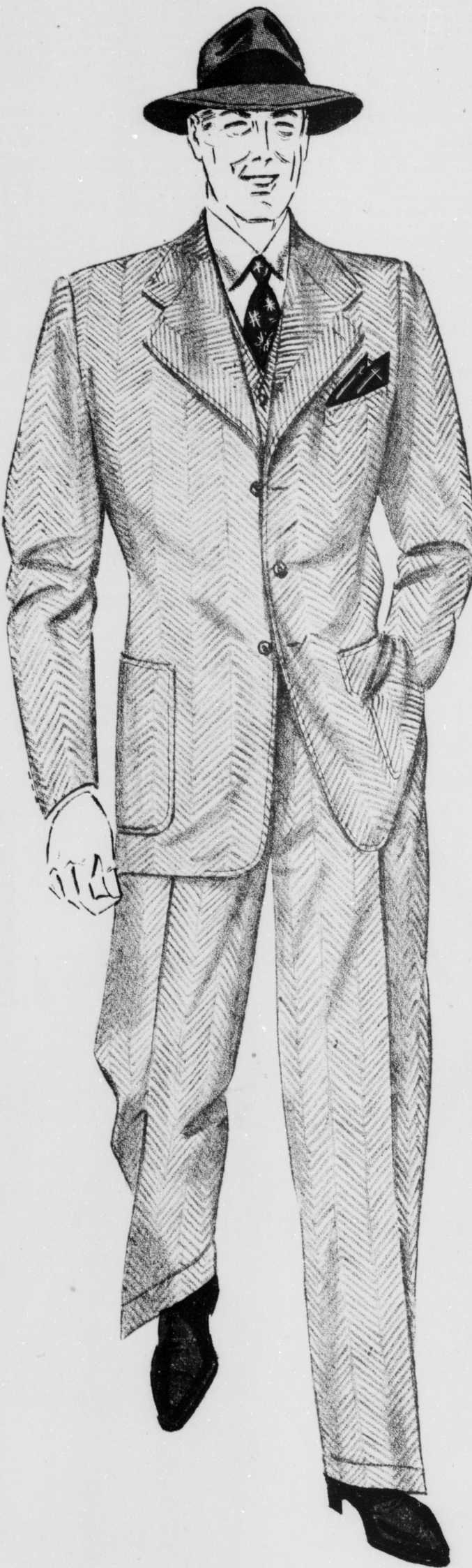
(2) Change the regular trousers for the GABARDINE SLACKS and you have a semi-sports layout.

(3) Remove the vest—try a SWEATER instead—and you have a more casual outlook. (Sweaters are \$2 to \$5).

—the JACKET can team up with other slacks . . .

—the SLACKS go in harmony with other sports jackets . . .

—try a LEISURE SHIRT or a LOAFER COAT with your slacks for some high class loafing—or for action (such as golf) . . .



## WARDROBER\*

JACKET, VEST, TROUSERS  
AND SLACKS (4 PIECES)

29.75 \$25

It is not too much to say that Wardrober suits have brought new comforts—new satisfactions in living!

They give the spice of variety—the lift of a change—they are a complete Wardrobe all in one suit—at one moderate expenditure.

What you get, sir, is a good-looking, well-fitting business, town and classroom suit . . . plus an extra pair of GABARDINE SLACKS—which extends that suit to casual, campus and sports services (active and spectator) . . .

These for 1941 carry the smartness, the soft, the easy fit, for which Wardrobers are widely famous—

plus, of course, the newness-es for this season—the LONGER, FULLER JACKETS, the NEW DIMENSIONS IN TROUSERS.

All the new shades: New AIR CEILING BLUES, new BROWNS AND TANS, new GRAYS fused with BLUES AND GREENS! Diagonals, Herringbones and Tweed effects—Wardrober is the Word!

STRAUSS

L. STRAUSS AND CO., INC., THE MAN'S STORE

\*Registered U. S. Pat. Office.