

# HILLMAN BOOST FAILS TO QUIET RUFFLED LABOR

Some Call Him 'Careerist,' Others Feel He Lacks Real Power in Defense Job.

By LUDWELL DENNY  
Times Special Writer

WASHINGTON, Jan. 9.—As a reward for his promotion of Sidney Hillman from advisory Labor Defense Commissioner to the twin job of authoritative director general of defense production, the President has not quieted the dissatisfied labor leaders as hoped.

Only grudging credit is given the President by the unions for his overriding of opposition by industrialists and War and Navy Departments, who wanted the union leader's function confined to labor and only advisory at that.

Most of these industrialists and service brass-hats like the suave, efficient Mr. Hillman, but they didn't want him as their boss—co-equally with William Knudsen—especially in all production and priority matters.

**Jealousies Cited**

Since this is perhaps the most powerful and important governmental recognition ever given organized labor in this country, the President's friends naturally expected it would zoom union morale to record heights. Though that may be the result eventually, the immediate off-the-record reaction is rather flat.

The reasons are varied, ranging in almost a complete circle from right to left. Here are some of them:

The poisonous jealousies which afflict so many union leaders—Philip Murray, C. I. O. chief, being one of the splendid exceptions.

**Two-Way Criticism**

Infinite ramifications, some petty and many serious, of the A. F. of L.-C. I. O. rift and rivalry. Paradoxically, however, Mr. Hillman, though co-founder with John L. Lewis of the C. I. O. and head of a C. I. O. union, has more support from certain A. F. of L. heads than from some Lewisites.

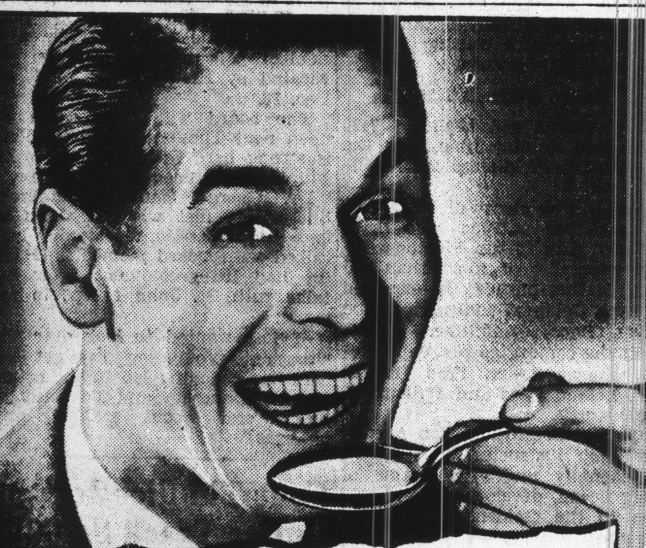
The minority charge that Mr. Hillman is a "careerist," in criticism of his majority rating as a "labor statesman."

Others complain he is only an "associate" in the team compared with the British labor boss, Ernest Bevin, who has much more power than the combined Hillman-Knudsen.

**Personal To Fat Girls**

Now you may slim down your face and figure without starvation dieting or back-breaking exercises. Just eat sensibly and take Marmola under the conditions and according to directions on the package. Marmola Tablets have been sold to the public for more than thirty years. More than twenty million boxes have been distributed during that period.

Marmola is not a cure-all. Marmola is only for adult fat persons whose fatness is caused by a thyroid deficiency (hypothyroidism) but who are otherwise normal and healthy. We do not make any diagnosis as to that is the function of your physician, who must be consulted for that purpose. Why not try to lose those extra pounds the Marmola way? Get a box of Marmola today from your druggist.



## A BRAND NEW TASTE THRILL!

HEINZ SPLIT PEA SOUP  
With Vegetables And Ham



SOMETHING has happened to that grand old favorite—split pea soup! Heinz chefs have introduced tender ham and added choice garden vegetables to give it new lift and lure. You'll marvel at the difference in flavor! To choicest split peas, potatoes and golden carrots, we add tender, whole ham to make Heinz Split Pea Soup with Vegetables and Ham the tastiest ever! Surprise your family with a brimming tureen, tonight!

IT'S NEW—IT'S DIFFERENT  
It Tastes Homemade!

57

HEINZ SPLIT PEA SOUP  
WITH VEGETABLES AND HAM

# Pappas to Head Commerce Club

The election of William Pappas, 360 N. Illinois St., as president of the Butler Unit, Commerce Club was announced today. Besides Mr. Pappas, a senior, the other officers were Miss Doris Griffith, vice president; Miss Mary Catherine Johnson, secretary; and Robert Tews, treasurer.

Max Little is chairman of the constitution committee and Chester Robinson is program chairman. Rose Christena will have charge of publicity.

# MINTON TAKES OVER NEW OFFICE SUITE

WASHINGTON, Jan. 9.—Former Senator Sherman Minton today took over an office suite in the State Department Building directly opposite the White House.

This is his new headquarters as one of the administrative assistants to President Roosevelt.

Miss Frances Kelly, Indianapolis, who was in his Senate office, will be his secretary in the new post. Mr. Minton announced. She had gone to New York City to take a position.

Miss Gertrude Stricker, Indianapolis, who also was on the Minton senatorial staff, is now secretary to Commissioner John W. Scott, Gary, of the Federal Power Commission.

James Penman, Brazil, Minton's secretary as Senator, may remain in Washington also, it was learned.

Mr. Minton today received a congratulatory note from Senator Raymond E. Willis, the Republican who defeated him. Senator Willis was an honor guest at the Washington Rotary Club luncheon yesterday. He is a former Governor of the Indiana Rotary Clubs.

**STRING SOLVES ROBBERY**

CINCINNATI, O., Jan. 8 (U. P.).—Patrolman Harry Holtman solved a robbery by pulling at a piece of clothing hanging over an alley fence. Tied to the other end of the line were five new radios stolen from a nearby appliance store.

Advertisement

# TEACHERS TO HOLD INSTITUTE SATURDAY

William Rainey Bennett, lecturer, will be the principal speaker Saturday at the first of four Marion County Teachers' Institutes to be held during the year.

He will speak on "Keeping Sane in a Crazy World" before teachers in county schools outside Indianapolis at 1:30 p. m. at the Lawrence High School.

J. Malcolm Dunn, county school superintendent, will preside over the program which will open at 9:30 a. m. with group meetings.

Section speakers for the morning program include Frank S. Stafford, State Board of Health, before the coaches; H. A. Harshman, Indianapolis school administrative research director, to grade school principals; O. S. Fick, Tech High School social science department head, to social science teachers; and T. A. Dicus, State Highway Commission chairman, at the science, health and safety section.

A luncheon in the school cafeteria will feature a music program under the direction of Charles Munger, Lawrence Township band and orchestra instructor.

# 'Prop' Plant to Employ 4000; Jersey Man Named Manager

The propeller division of the Curtiss-Wright Corp. will employ 4000 in its Indianapolis plant, it was announced officially today. The factory is to be located in five buildings of the old Marmon automobile development in W. Morris St., 1200 block.

Including the plant here, the division will employ a total of more than 13,000. In addition to the local factory, the Curtiss division has propeller plants in Pittsburgh and Clifton, N. J.

It also was announced officially that Ralph J. Schneider, of Clifton, will manage the factory here.

Mr. Schneider, who is married and has a 19-year-old son, said he expects eventually to move his home from Clifton to Indianapolis.

Born in Buffalo, where he was educated, he joined the Curtiss Aeroplane Division of the Curtiss-Wright Corp. at Buffalo in 1937 as a mechanical adviser on gear problems in the newly organized propeller department.

In July, 1938, business of the propeller department had expanded so rapidly that it was decided to make it a separate division. In the same year, Mr. Schneider was promoted to the position of manufacturing superintendent for the division.

The plant here will "be under his complete control," according to Robert L. Earle, vice president of the Curtiss-Wright Corp. and general manager of the corporation's propeller division.

# V. F. W. COMMANDER WILL SPEAK HERE

Max Singer, Boston, national vice commander in chief of the Veterans of Foreign Wars, will be the guest of honor at the midwinter conference of the Indiana V. F. W. Department Saturday and Sunday.

Headquarters for the meeting will be at the Spink-Arms Hotel, with Sunday's business meetings in the World War Memorial Shrine.

Registration will be held Saturday afternoon at the Spink-Arms, followed by the official banquet at 7 p. m. in the main dining room.

Mr. Singer will address a public meeting in the Shrine at 1:15 p. m. Sunday. During the day, school of instruction for various department, district and post officers will be conducted.

**SHOES**

Men's Dress Oxfords... 1.59  
Children's Shoes... .69  
Women's Sport Oxfords... \$1  
Rubbers, Galoshes at  
Cut Prices  
SHOE MARKET  
430 E. WASH. ST.  
Open Nights Till 9 Open Sundays

# TERMS CITY SCHOOLS A VAST CORPORATION

A. B. Good, public school business director, yesterday told the School 43 P-T. A. that the public schools comprised the "largest corporation in the City and one in which each resident and property owner is a stockholder."

He emphasized the size of the system and the low operating costs.

William A. Evans, director of safety and publications, yesterday spoke on "Why Safety Education?" before School 69 P-T. A. members and showed films of last summer's

Rich chicken noodle soup... in handy dry form... cooks in 10 to 15 minutes needs no chicken stock

**KA SOUP-ER-MIX**

Serves 5 to 6 10¢

Safety Camp before the School 55 P-T. A.

**SAVE**

at Celtic

SAFETY IS INSURED

A Federal Agency Insures YOUR Savings

UP TO \$5,000

OPEN an Account of \$1.00 or More. You Can Even Mail It to Celtic.

**CELTIC FEDERAL SAVINGS & LOAN ASSOCIATION OF INDIANAPOLIS**

23 W. Ohio St.

# SAVE 6 DAYS A WEEK AT A & P

FOR THE 52 WEEKS OF 1941... PRICES ARE LOW EVERY DAY!

**GET ALL THE FINE FLAVOR WITH Custom Ground 8 O'CLOCK COFFEE 3 LB. BAG 37¢**

**RED CIRCLE 2 Lbs. 31¢ • BOKAR 2 Lbs. 33¢**

**NEW LOW PRICES!**

<b>NAVY BEANS</b> 10 LBS. 35¢ CHOICE HAND-PICKED	<b>OXYDOL</b> Lg. Pkg. 17¢ Giant Pkg., 48¢—Sm. Pkg., 7¢	<b>WOODBURY'S SOAP</b> PINEAPPLE JUICE SANI-FLUSH HEINZ PICKLES IVORY SOAP	<b>DEAL 4 Cakes 21¢</b> <b>A&amp;P BRAND 3 NO. 2 CANS 29¢</b> <b>2 CANS 35¢</b> <b>28-OZ. JAR 20¢</b> <b>6 Cakes 25¢</b>	<b>IONA PEACHES</b> 2 NO. 2 CANS 19¢ HALVES OR SLICED	<b>SULTANA PRUNE PLUMS</b> 2 NO. 2 1/2 CANS 21¢
--	---	--	--	---	--

<b>SARDINES</b> DREFT KITCHEN KLENZER GALUMET GERBER'S E-Z BAKE EGGS SUNNYBROOK EGGS	<b>IN TOMATO OR MUSTARD SAUCE OR NATURAL</b> <b>GIANT SIZE</b> <b>BAKING POWDER</b> <b>BABY FOODS</b> <b>CORN MEAL</b> <b>CRISTVIEW IN CARTONS</b> <b>INDIANA GRADE "A"</b> <b>LARGE</b> <b>INDIANA GRADE "A" DOZ.</b>	<b>3 OVAL CANS 25¢</b> <b>PKG. 50¢</b> <b>2 CANS 9¢</b> <b>LB. CAN 15¢</b> <b>6 CANS 39¢</b> <b>10 LB. BAG 25¢</b> <b>DOZ. 29¢</b> <b>DOZ. 35¢</b>
---	--	---

<b>SULTANA MACKEREL</b> 3 TALL CANS 25¢	<b>KITCHEN MATCHES</b> BUFFALO BRAND 6 BOXES 13¢
--	---

**TODAY'S DOUGHNUTS... TODAY!**

Jane Parker

## DONUTS

Dated for Freshness

DOZ. **10¢** Plain or Sugared

**A&P SOFT TWIST BREAD 3 1/2 Lbs. 23¢**  
A LUXURY LOAF... AN ECONOMY PRICE

<b>DEE-LISH, SWEET PICKLES</b> QT. JAR 23¢	<b>RINSO</b> LG. PKG. 17¢ GIANT PKG. .... 48¢ SMALL PKG. .... 7¢	<b>SWEETHEART SOAP</b> 3 Cakes 17¢	<b>HEINZ SOUPS</b> 2 TALL CANS 25¢ EXCEPT CLAM CHOWDER	<b>TOLL HOUSE COOKIES</b> NESTLE'S SEMI-SWEET CHOCOLATE 2 7-OZ. BARS 25¢	<b>SUPER SUDS</b> LG. PKG. 17¢ GIANT PKG. .... 48¢
---	---	---------------------------------------	--	--	--

38th at College 5541 E. Wash. in Irvington 3021 W. Wash. 1337 Shelby Fountain Square 55 S. State St. in A&P Warehouse 3515 N. Illinois 1515 N. Ala. 6327 Bellefontaine Broad Ripple

# SUPER A&P MARKET

EVERYDAY LOW PRICES

PRICES SUBJECT TO MARKET CHANGES. OWNED AND OPERATED BY THE GREAT ATLANTIC AND PACIFIC TEA CO. OPEN DAILY TILL 9 P. M., SAT. TILL 9:30 P. M.