

SOUTH AMERICA NOW MAY AID IN DEFENSE POLICY

With Proud Britain Giving Bases, Maybe Brazil and Peru Will Also.

By WILLIAM PHILIP SIMMS
Times Foreign Editor

WASHINGTON, Sept. 4.—Acquisition for the first time of U. S. naval and air bases in South America may profoundly affect the future of hemisphere defense.

Up to the present, the major South American republics have manifested great hostility toward any project which even remotely suggested that the United States might be aiming at such bases in their vicinity.

Down deep in their hearts, Latin American countries have often been grateful for the Monroe Doctrine and the security which it has meant for them. Nevertheless none of the major nations has yet been willing to offer Uncle Sam a base from which hemisphere defense could be carried out more effectively.

Monroe Doctrine Strengthened

Now, as a result of the Anglo-American deal whereby Great Britain exchanges naval and air bases in the Western Hemisphere for 50 destroyers, South America's attitude may undergo a change. Perhaps Brazil, Chile, Peru, and even Argentina may see things in a slightly different light. If the great and proud British Empire is not above such a deal, they might reason, why should they be?

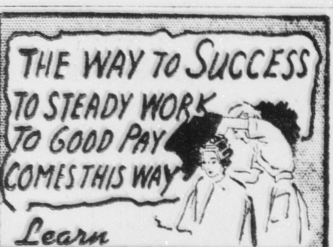
But whether they look at it that way or not, acquisition of naval and air bases in British Guiana and Trinidad—to mention only those on or adjacent to South America—greatly implements the Monroe Doctrine as it affects the area south of Panama. At least it will if the bases are speedily set up.

I was in British, Dutch and French Guiana four weeks ago. I struck me then that a base in any one of these European colonies would greatly strengthen the hands of the United States should it ever have to defend the New World.

Better Than Puerto Rico

The Guianas make a nick in northern Brazil. All of Brazil, larger in area than the United States, lies east of New York. Its eastern bulge is only 1600 miles from British and French West Africa. Were Britain defeated and were Germany to set up naval and air bases—as she undoubtedly would—in West Africa, Brazil would be in grave danger. Nazi bombers and parachutists would find the trans-Atlantic hop easy.

Should Hitler attack Brazil, the United States would find it much easier to oppose him from a base in Guiana than from Puerto Rico, some 2000 miles to the northwest. Similarly, were Germany to try to get at the Panama Canal from the South Atlantic, the Caribbean or along the South American north coast, she would first have to reckon with both the Guiana and the Trinidad bases.



THE WAY TO SUCCESS TO STEADY WORK TO GOOD PAY COMES THIS WAY

Learn **BEAUTY CULTURE**

A refined, pleasant, assured occupation. Where you may be employed while single, married or after marriage. Where age, education or lack of experience is no handicap in starting. EASILY and QUICKLY LEARNED AT OUR SCHOOL—INVESTIGATE TODAY—Beauty courses as low as \$60! Easy Terms! Write for picture catalog.

ROYAL BEAUTY ACADEMY
401 Roosevelt Bldg. RI-3070
Indianapolis, Indiana

Here's What U. S. Got



This map clearly shows how the new naval and air bases, which Great Britain has given the U. S. the right to construct on British possessions, will screen the Eastern United States and the Panama Canal from European attack.

Leasing of British Bases Bulwarks American Safety

WASHINGTON, Sept. 4 (U. P.).—This is what the United States gets in return for 50 over-age destroyers:

BERMUDA—A naval and air base. Probably on the great bay, familiar sight to thousands of American tourists, with landlocked harbors and eight square miles of sheltered water. A base of the British West Indies fleet, it has a depth of from 18 to 66 feet and is additionally protected from hurricanes by an outlying coral reef.

Ireland Island to the northwest side of the bay is heavily fortified, has barracks and dockyards. During the World War portions of the United States fleet operated from there. Trans-Atlantic clippers often stop for refueling.

Bermuda's outlying position, 640 miles from Hatteras, 697 from New York and 673 from Norfolk, would permit a fleet based there to make extensive scouting operations to intercept any invader from Europe. The Azores lie 1790 miles eastward.

NEWFOUNDLAND—A naval and air base site on the south shore of the Avalon Peninsula. This is the southeasternmost point of Newfoundland, close to northern sea lanes to Europe and commanding Atlantic air routes. There are well protected harbors and bays. It is north and east of New England and dominates the entrance to the St. Lawrence River, whose valley is the historic route of invaders of the North American continent.

BAHAMAS—Crooked Island passage. The base here is expected to be for aircraft only since the Bahamas offer no satisfactory naval harbors. Dominating the narrow passage, this base also could serve as a listening and reconnoitering post. More important, such a base would dominate the northeastern entrance to the windward passage for Europe-Caribbean traffic just as the United States' naval base on Guantanamo Bay, Cuba, now being enlarged, protects the southern approach.

JAMAICA—A base site on the south shore. Great Britain has its naval base at Kingston, on the other shore. The island, rich in tropical products, has been called the "crossroads" of air and maritime routes between the Americas. Great Britain formerly maintained a large naval base here, not out in recent years because of friendly relations with the United States. The American base would be an important addition to the defenses of the Panama Canal, 594 miles away.

ST. LUCIA—A base site on the north shore. This is one of three of the windward islands in the Lesser Antilles, which have good naval harbors. The British base of St. Lucia is Port Castries defended by military emplacements on the hills above. The islands dominate the route between the South Atlantic and the Panama Canal.

ANTIGUA—A base site on the north shore. A steep tropical outpost off the regular tourist routes. It is about half-way between St. Lucia and the Virgin Islands and is the seat of government of British's leeward islands. Many years ago its harbor was England's leeward islands naval station. It has a total area of only 108 miles and a population of about 35,000.

TRINIDAD—A base site on the Gulf of Paria. Close to Venezuela, protected by narrow passages, the base would be almost impregnable, astride the route from South America to the United States west coast. Rich in oil, sugar and cocoa, it is one of Britain's richest insular possessions.

BRITISH GUIANA—A base site about 40 or 50 miles from Georgetown. Here the coast is lined with muddy banks and the only harbors are river mouths and these are poor. It was believed an air base outpost for the naval base at Trinidad was planned. British and Dutch Guiana, furnished 98 per cent of United States imports of bauxite and aluminum ore in 1938.

INDIAN GRINDSTONE FOUND
WARREN, Me., Sept. 4 (U. P.).—A 150-year-old Indian grindstone measuring 15 inches in diameter was found by Alvah Spear while excavating a basement for his garage.

HOME FINANCING—EASY AS

ABC

Railroadmen's

FEDERAL SAVINGS AND LOAN ASSN.

217 E. Washington St. Indianapolis, Ind.

217 E. Washington St. Indianapolis, Ind.

217 E. Washington St. Indianapolis, Ind.

217 E. Washington St. Indianapolis, Ind.

217 E. Washington St. Indianapolis, Ind.

The "BUY WAY" of Indianapolis AYRES A DOWNSTAIRS A STORE

New Store Hours
9:30 to 5:30
Including Saturday

REAL SILK
★ Substandard of
DeLuxe Chiffon STOCKINGS

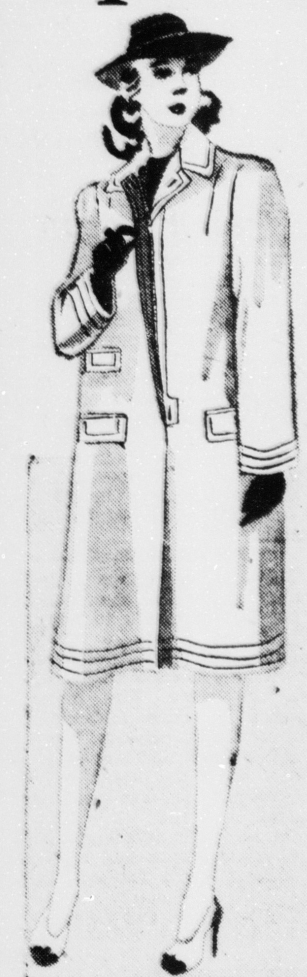
79c

You, too, can wear stockings of filmy, sheer chiffon. Real Silk is your answer. In addition to their beauty, they give you dependability in wear that cuts swaths in your hosiery bills. A special guard at points of strain gives you their added protection. They come in all new fall hosiery shades and sizes 8½ to 10½.

"Substandards are the stockings that escape, by the narrowest of margins being classed as firsts. Their beauty and wearability is in no way impaired. Buy them with confidence."

—Downstairs at Ayres.

* Rain 'r Shine REVERSIBLE Sports Coats



- Wool - and - Camel or Plaid Wool on One Side!
- Tweed and Shetland
- Cotton Gabardine on the Reverse Side!

\$10.95

You'll love it for its smartness! You'll swear by its utility! In fair weather it is a handsome wool-and-camel or plaid wool sports coat... and when it rains, turn its waterproof side to the elements! Zipper-closed fly front; warm collar that can be buttoned close! Full and boxy. In natural color or plaids. Sizes 9 to 17 and 12 to 18 in the group.

Plaid Back SPORT COATS

\$10.95

Smart plaidback tweed coats that are wind and rain-proof, in boxy and fitted styles.

—Downstairs at Ayres.

Boys' Wear for School!

Boys' Coat SWEATERS

\$1.39

Boys' coat sweaters with zipper or button front. Nicely styled and warm for school wear. Wine, Green, Brown and Blue in Mixed colors. Sizes 8 to 20.

Boys' Polo Shirts

Boys' fast color or polo shirts in bright blazer stripes. Fine fast color combed yarn. Sizes 6 to 18.

59c

Boys' Corduroy SLACKS

\$2.00

Plain and fancy patterns in boys' corduroy slacks. Durable and long wearing. Wines, Greens, Blues and Browns. Complete with belts. Sizes 6 to 18.

Boys' Corduroy OVERALLS

Boys' corduroy overalls in plain colors of Green, Blue and Brown in sizes 4 to 12.

\$1.69

—Downstairs at Ayres.

Kabo THE FOUNDATION THAT Fits

Announces:

CLEFF Contour

GIRDLES \$2.50 to \$5
COMBINATIONS \$2.50 to \$5
BANDEAUX 59c to \$2

Miss E. A. Swanson
Kabo Figure Analyst
Will Be In Our Corset Department
Thursday, Friday and Saturday, Sept. 5, 6, 7
Bring all of your corset problems to Miss Swanson, an expert in the science of correct figure control. She will be glad to help you with your personal problem.

—Downstairs at Ayres.

"Talked About" Fashion in Slenderizing

Princess DRESSES

With Tucking Treatment for a Narrow Silhouette

\$3.98

Sizes 9 to 15, 14 to 20!

Black! Brown! Soldier Blue! Sycamore Green! Sorghum Brown! White Trims!

Everybody is talking about the new and narrow silhouette and now Ayres Downstairs Ready-to-Wear brings you just these in economy dresses. Dress in the best of good taste and fine fashions... yet pay so little. Tucking treatment in princess dresses to fit Juniors and Misses figures.

—Downstairs at Ayres.

Right: Rayon alpaca princess dress with detachable white collar, tucked bodice. Black, Soldier Blue and Sorghum Brown. Sizes 9 to 15.

Left: Rayon alpaca princess dress with detachable white collar, tucked bodice. Black, Soldier Blue and Sorghum Brown. Sizes 9 to 15.

School Clothes for Smart Girls!

GIRLS' CORDUROY Jumper Sets

\$3 Complete

A complete jumper set of corduroy complete with spun rayon blouse in contrasting colors. Jumpers in wine, blue and green. Sizes 7 to 12. Teen Sizes 10 to 16 \$3.98

Girls' Nautical SAILOR DRESSES

\$2.00

Cotton nautical sailor dresses in navy with white braid trim. Red ties and novelty anchor trim. Sizes 7 to 14.

Feather-Trimmed CALOTS

59c

Feather-trimmed beanies in red, blue, wine or green.

CORDUROY Pork Pie HATS

\$1.00

Girls' corduroy pork pie hats with new large brim. Red, green, blue or wine.

EXTRA MILDNESS

EXTRA COOLNESS

EXTRA FLAVOR

CAMEL

WITH SLOWER-BURNING CAMELS