

BECKNER JOINS STAFF OF FSA

Resigns From Butler Faculty To Take Up Duties In Washington.

Dr. Earl R. Beckner, Butler University College of Business Administration faculty member, has resigned to accept a post with the Federal Farm Security Administration at Washington.

Dr. Beckner has been on a leave of absence from the University for the last year.

Dr. M. O. Ross, dean of the Business college, announced the resignation. Dr. Beckner became a member of the Butler faculty in 1927. He graduated in 1923 and received his master's degree from the University of Chicago in 1924.

He was called to Washington last year to serve as senior social science analyst in the FSA. At present he is conducting research into the problem of migratory farm labor. "Dr. Beckner," Dean Ross said, "was a valued member of the Butler University faculty for many years. He is an excellent teacher and an outstanding student in his field. His fellow faculty members, former students, and many friends in Indianapolis will miss him greatly. He has, however, in the Farm Security Administration, an opportunity to engage in the type of work for which he is peculiarly fitted. We predict for him an outstanding success at his new work."

LIONS TO 'CHECK UP' ON THEIR PROGRAM

The Lions Club will seek "constructive criticism" of its program and work from members at a meeting of the group at the Claypool Hotel tomorrow. The meeting will be closed.

Those attending the meeting will vote on a proposed amendment to the constitution providing that the immediate past president shall be ex-officio delegate to the national Lions convention.

The membership application of Harry C. Kryter, Burrell-Dugger Co. president, has been approved by the membership committee and the board of directors and will be presented at the meeting.

Broad Ripple Postoffice Designed



Broad Ripple Postoffice plan... "convenience of public given prime consideration."

PROBATION NOW ASKED BY HOLT

Move Follows Failure to Get Review of WPA Case In U. S. Court.

Olin R. Holt, former Kokomo mayor convicted of WPA fraud, turned to a request for probation today in his fight to escape a 15-months prison sentence. Immediately following a second refusal yesterday by the United States Supreme Court to review his conviction in Federal Court here, Mr. Holt's attorneys asked that a probation request be considered. The case was tried before Federal Judge J. Leroy Adair and he would have to approve the request. Capt. Adolph H. Kruse, probation officer of the court here, was in Evansville yesterday and could not be reached for comment. It was expected the case would be referred to him.

Mr. Holt is free on \$5000 bond, the amount of the fine levied by Judge Adair in addition to the prison sentence. Four other former Kokomo officials were convicted along with him.

WILKINS PLANS SUB TRIP TO NORTH POLE

HALIFAX, Nova Scotia, April 9 (U. P.).—Sir Hubert Wilkins said today he would start his scheduled expedition to the North Pole, using a submarine under the northern ice, in May 1941.

Sir Hubert, who arrived in Halifax last night from New York, said his undersea boat will be built in Seattle. He will leave here tonight for the West Coast to begin work on the tiny sub at once, he said.

Bids for New Building Will Be Received May 8

Bids for the construction of the new Broad Ripple postoffice station on the east side of Carrollton Ave. between 62d and 63d St. will be opened in Washington at 1 p. m. on May 8.

The announcement was made as W. E. Reynolds, Commissioner of Public Buildings, sent to Federal Works Administrator John M. Carmody plans and specifications for a one-story building of contemporary design. An allotment of \$86,000 has been made for the purchase of the site, construction and administrative costs.

The design for the new building originated in the office of the Supervising Architect of the Public Buildings Administration.

The technical requirements of postal work, as well as the convenience of the public were given

STATE HIGH COURT ADMITS 18 TO BAR

Eighteen young attorneys who passed bar examinations in March have been admitted to practice law before the Indiana Supreme Court. They include: Bryce Beecher, 1309 W. 35th St.; Paul E. Blackwell, 1409 N. Warman Ave.; Lora D. Lashbrook, 1802 N. New Jersey St. and Harry P. Zaklan, 4469 Washington Blvd., all of Indianapolis.

Others are Arden N. Butler of Culver, James M. Callahan of East Chicago; Leo J. Clifford, Valparaiso; Jack Finney, Bloomington; Maurice N. Frank, South Bend; John T. Hays, Sullivan; Earl D. Lytal, Ft. Wayne; Robert E. McHaffie, Gary; Robert E. Rabiner, Gary; John Reiber, Ft. Wayne; Anthony B. Roszkowski, Gary; Ray O. Sine, Gary; Wendell Tombaugh, Bloomington, and John L. Williams, Bloomington.

CENSUS MAKES TRANSIENT POLL

Biggest Night's Work Done Here as Hotels, Camps Are Checked.

The biggest night's work of the census in Indianapolis was over today.

Squad leaders this morning brought in individual census blanks from more than 80 hotels, more than 50 tourist and trailer camps and more than 40 "flop-houses," all filled in by last night's guests.

Similar blanks were filled out in every city of the nation last night, in an attempt to include in the census figures the vast army of transients which ordinary house-to-house canvassing misses.

To make as little duplication as possible, each blank was marked "transient" or "permanent resident" by the hotel or camp management. The choice of a single date for the whole nation also was to avoid duplication.

Hotel managements offered every co-operation, E. C. Burkert, 12th District census supervisor, said. Mission and social agency officials also were helpful, he said, and there was little trouble in the tourist camp areas, although the operators of most of these had not been warned in advance.

The Census Bureau instructions from Washington were that all blanks which were incompletely filled out were to be checked to night, but the census supervisors here felt that too many would be gone by tomorrow night. So where possible, the incomplete blanks were checked with personal visits last night. Permanent guests will be queried in more detail later.

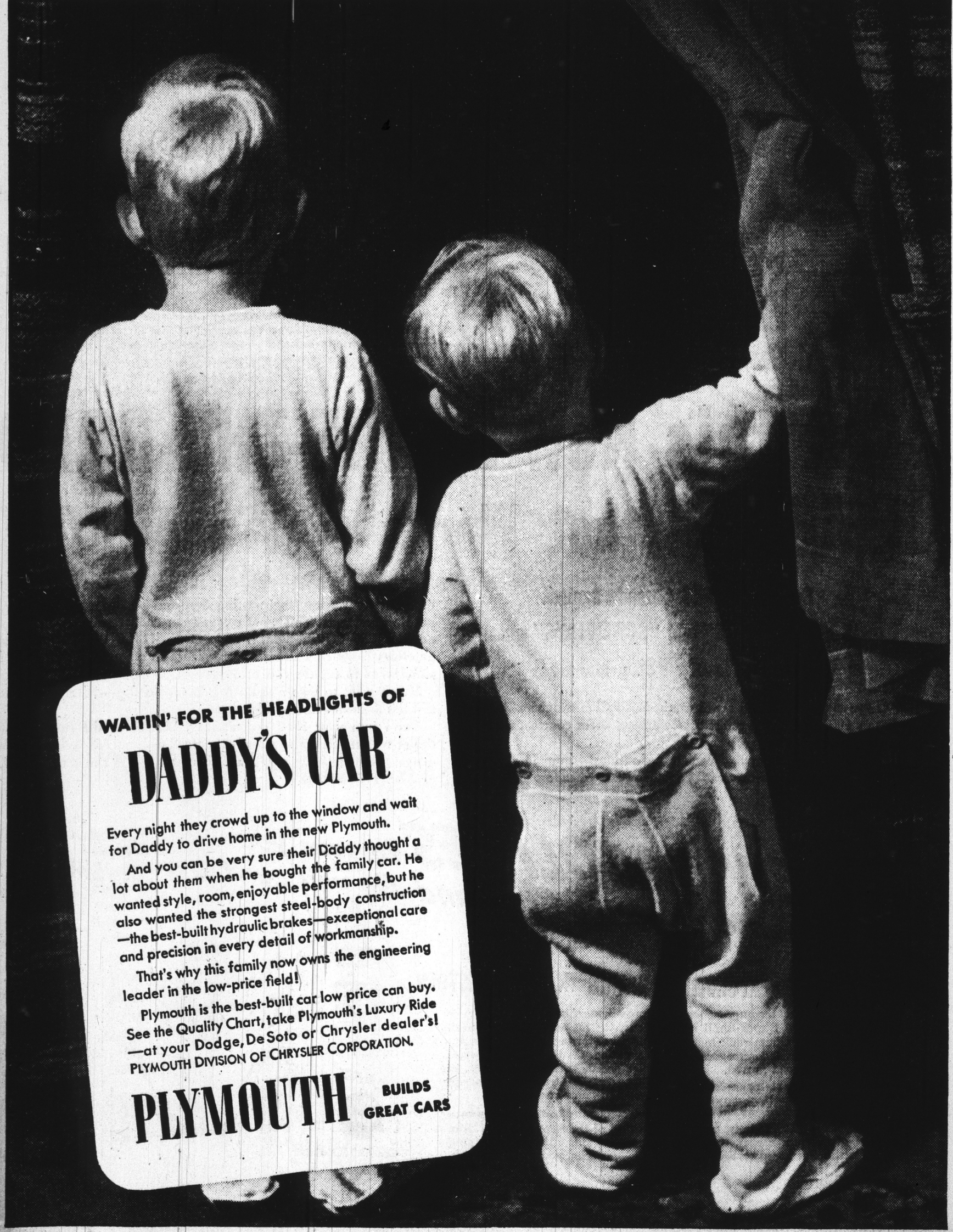
NO WAR, NO BOYCOTT, 1ST LADY DECLARES

SAN FRANCISCO, April 9 (U. P.).—When Mrs. Eleanor Roosevelt was here last week on a lecture tour she bought a Japanese-made kimono and the fact was cabled to Japanese newspapers.

They played it prominently, interpreting it as a meaning that she had abandoned a policy of boycotting Japanese goods.

But Mrs. Roosevelt said such an interpretation was incorrect. Reached at Yosemite Park where she spent the last week-end she said she never had boycotted Japanese products.

"This country is not at war with Japan and has not boycotted goods of that nation," she said. "Neither have I."



WAITIN' FOR THE HEADLIGHTS OF DADDY'S CAR

Every night they crowd up to the window and wait for Daddy to drive home in the new Plymouth.

And you can be very sure their Daddy thought a lot about them when he bought the family car. He wanted style, room, enjoyable performance, but he also wanted the strongest steel-body construction—the best-built hydraulic brakes—exceptional care and precision in every detail of workmanship.

That's why this family now owns the engineering leader in the low-price field!

Plymouth is the best-built car low price can buy. See the Quality Chart, take Plymouth's Luxury Ride—at your Dodge, DeSoto or Chrysler dealer's!

PLYMOUTH BUILDS GREAT CARS

CUT THIS OUT!

THE LEADER STORE INVITES YOU TO PLAY ZING-O THE NEW RADIO GAME

Every Tues. 5 P.M. WIRE

WIN CASH Prizes Every Week

HOW TO PLAY ZING-O—This is your ZING-O card. Have it in front of you when you tune in our radio program. Each person who plays must have a separate card. Each picture on this card represents a sound effect. A part of our program will be a short play. During this play a number of sound effects will be heard. As you hear each sound see if you can find a picture on the card which represents that sound. The squares you check need not be in any particular order. When you have identified the sounds correctly by checking only the proper squares, you will be a winner. LISTEN TO THE ANNOUNCER'S INSTRUCTIONS.

Name _____ City _____ State _____

PLAY ZING-O Join the Fun... Cash Prizes... \$1 to All Winners Tune In WIRE At 5 P.M. Today...

ZING-O An exciting new radio game that combines the fun of game and the thrill of contest. Entry blanks for future weekly broadcasts obtainable at THE LEADER STORE. Nothing to buy, no sales slips to send in... just an entertaining game in which everyone can win cash prizes plus—Beautiful G. E. Radios Every Week Radios will be awarded on the basis of slogan alone. Just finish the sentence below in 25 words or less I Like to Shop at the Leader Store Because...

LEADER'S Basement 5th Birthday SALES

STARTING WEDNESDAY AT 9 A. M. Thousands of dollars worth of merchandise goes on sale at SPECIAL BIRTHDAY PRICES. From floor to ceiling, from wall to wall, every inch of space crammed full of VALUES that say "THANK YOU" for your friendly patronage of this MONEY SAVING STORE.

COME! WE'RE CELEBRATING WITH VALUE!

15c-19c-25c SPRING AND SUMMER DRESS FABRICS

Full Bolts and 2 to 10-Yd. Lengths

Printed Voiles • 80-Sq. Percales • Printed Organdies • Woven Fabrics • Chambray Prints • Hopsackings • Printed Batistes • Blister Sheers • Printed Dimities • Plain Piques • Permanent Finished Organdies

Yard 10¢

Hand Crocheted LACE DOILIES 10c to 15c values. Assorted patterns in round, oval, oblong and squares. Each. 3c

81x99 SEAMLESS RED SHEETS Selected accents of a famous brand. Good count cloth woven of long fiber cotton. Full bleached. 69c

5c to 10c Imported VAL LACES 1/2 to 1 inch widths. Ecru, cream and colors. Birthday sale priced. Yard 1c

50x50 RAYON LUNCH CLOTHS Assorted block patterns. Reds, greens, blue and gold. Fast color. 15c

Leader De Luxe PILLOWCASES Usually 25c. Same high quality as the sheets. Size 36x22. Wide hem. Each 12 1/2c

10c 300 YARD O. N. T. THREAD Black and white. All sizes. Wednesday and Thursday only. 6 1/2c

Special Purchase! About 600 49c to 98c 30 TO 45-INCH LACE PANELS 2 1/4 and 2 1/2 Yard Lengths

A famous maker co-operated to make our birthday party a success. Expect to find assorted rough weaves, fine Filet Nets and Nottinghams, all finished with three position loop tops for hanging.

Each 29¢

36-In. Slipcover & Drapery Fabrics 50c to 4.00 values. Floral, Cherry cloths. Chenille. Homespun, Floral. Chevron. Full length and pieces. Yd. 19c

Belfar—12 in a Box Sanitary Napkins Made by the makers of one of the famous nationally advertised brands. 12 for 8c

69c-\$1 Occasional FURNITURE • End Tables • Smoking Stands • Chair Side Tables • Flower Stands, etc. 33c Ea.

Usually 25c 36-In. GLAZED CHINTZ Large and small floral, geometric and tapestry patterns. Large choice of colors. Yard 12 1/2c

HOME NEED SPECIALS—Each • Toilet Tissue • Lightbulb Cleaner • Laundry Soap • Washing Powder 2 1/2c

Maker's Mill Ends CURTAIN GOODS 3 to 10 yds. Usually 25c to 30c in the store. Chenilles, clip and figured. Marquisette, perthouse and plain meshes. Yard 6 1/2c

Two Great Factory Purchases of Quality ALUMINUM AND ENAMEL WARE Regular 59c and 69c Values!

ALUMINUMWARE • 10-Qt. Dishpans • French Fryers • 6-Cup Percolators • 3-Pc. Saucepan Sets • Double Boilers

ENAMELWARE • 5-Qt. Teakettle • Oval and Round Dishpans • 4-Qt. Kettles • Roasters • Convex Saucepans • Double Boilers

Each 44¢