

EMBARGO MOVE AGAINST JAPAN SPLITS SENATE

President, Paradoxically, Depends on Isolationists, To Press His Aims.

By LUDWELL DENNY
Times Special Writer

WASHINGTON, Feb. 1.—Pressure for an embargo against Japan has been increased by reports of severe fuel and power shortages there, temporarily closing many industries. The theory is that Japan is beginning to crack economically, and that now is the time to strike.

On a firm hand, the Senate Foreign Relations Committee is restlessly plugging for his discretionary embargo resolution.

But President Roosevelt and Secretary Hull are trying to hold off Senate action. They are in the delicate position of needing Senate agitation to impress Japan with the threat of embargo. At the same time they must prevent Congressional or public hysteria from getting out of hand and forcing a break in American-Japanese negotiations.

Paradoxically, the President must depend on isolationists such as Senator Nye, to protect the Administration's Far Eastern strategy against the official Administration group led by Chairman Pittman. At the special session the Pittman group favors and the isolationists opposed, the President's successful demand for revising the neutrality law and dropping the general arms embargo.

The isolationist position is stated by Senator Nye, who takes Senator Borah's place on the Foreign Relations Committee, as follows: "We are unalterably opposed to placing an embargo against Japan or anyone else, unless all belligerents are equally affected. I certainly do not want my country nosing into every controversy, deciding who is right and who is wrong. That would be a direct, aggressive step toward war."

This philosophy, of course, is anathema to the President. He believes in taking sides, and that this can be done effectively without drawing us into actual military war. But he also wants to keep control of foreign policy in his own hands. If debate goes too far on the Pittman discretionary embargo resolution, it may easily end up in a mandatory resolution.

F. D. R. Has Reprisal Power Since the President already has all the reprisal power he needs to use against Japan at the moment, without further Congressional grant of authority, the isolationist sentiment by producing a Senate deadlock serves the President's purpose temporarily. That situation will be reversed, if and when the President comes to ask for more power.

The difference between the Senate group demanding an immediate embargo, and the President who is satisfied with the threat, is not one of purpose, but of method and of information. Being closer to the facts, as reported by his exceedingly able diplomats—Ambassador Grew in Japan and Ambassador Johnson in China—the President is more aware than the Senate embargoists that this weapon is two-edged. Improperly used or timed it could result in a war instead of the desired compromise.

The State Department is impressed by Japan's increasing weakness on the economic and financial front. But it is not so certain as some Senators that Nippon is near a crackup.

"Go Slow" Is Strategy Therefore the strategy is to go slow. This may seem strange policy to follow abrogation of the trade treaty, and the "moral" embargoes placed on American shipments of airplanes and parts, aluminum, molybdenum, and equipment for making aviation gasoline.

But it is precisely by such slow, spot by spot pressure, rather than a spectacular wholesale embargo, that the Administration hopes to bring Japan to terms—terms which Japan can accept without losing face as in a formal general embargo. The hope is that the Japanese military, now supreme, will overlay its hand. A more farsighted civilian government can then end the suicidal Chinese war and American dispute.

But that hope is slight at best.

May Be Gertie, Belle of Movie

Times Special
ELKHART, Ind., Feb. 1.—Employees of a local ice plant here are "beefing" plenty about the new member which has appeared in their midst.

During the night, a huge cow walked onto the company's property unconcerned and apparently in no hurry to leave.

The employees are caring for the cow, hoping the owner soon will come to claim him.

NURSES TO MEET HERE SATURDAY

Newest Standards of Profession Will Be Topic Of State Conclave.

About 150 officers of the Alumnae, District and State Nurses' Association of Indiana will convene at the World War Memorial here Saturday for their second annual conference.

A series of round table discussions, lectures and reports will fill the one-day meeting. A luncheon will be held at the Indianapolis Athletic Club.

Miss Nellie G. Brown of Muncie will lead a round table discussion on "Nursing as a New Decade Opens." The latest advances in educational nursing standards will be discussed by Miss Mary A. Meyers of Indianapolis and Miss Edith Hunt of Terre Haute.

Nurses attending from Indianapolis will include the following on the Board of Directors: Sister Andrea, Misses Ellen Marie Anderson, Margaret Bost, Beatrice Gerrin, Grace Wilwer, Constance Datzman and Emma Hannafin and Mesdames Margaret Strong, Margaret Culbertson and Alice Jones.

Indianapolis nurses attending as alumnae representatives include Misses Marie Winkler, Harriet Pickett, Marie Schulz, Josephine Smith, Edna DeBruiler, Mary Carr, Ann Keogh, Katherine Pavlak, June Carson, Caroline Henderson, Alice Brown and Mildred Banker and Mesdames Cordelia Collins and Gladys Wilkins.



TEAMMATES or DINNERTATES S.S.S. Tonic is the choice to increase the appetite...to boost energy

Countless thousands of men and women can testify to the benefits S.S.S. Tonic has brought them.

The facts are simple because of all conditions affecting the human body a low blood count is most deceptive. If you feel rundown...lack a keen appetite...have lost weight...don't give up until you restore those precious red-blood-cells back to normal.

S.S.S. Tonic may be just what you need to get you on the right road to health and happiness again. In S.S.S. Tonic you go after the trouble in two ways...first you increase the appetite and better your stomach digestion—thus making better use of the food you eat—secondly, thin, weak, watery blood is made rich and red again thus giving you a boost in energy.

Try S.S.S. which any drug store can supply and no ethical dealer will suggest a substitute. The big 20 oz. size is a two week's treatment and represents a saving in the purchase price. S.S.S. Co.

S.S.S. Tonic
Appetizer
Stomachic

Important ANNOUNCEMENT to All Sufferers From SINUS

Head Colds...Catarrh
Come in NOW...FREE Demonstration OF MEDOVAPO INHALER

Here's a new, convenient and surprisingly effective method of applying comforting, pain-relieving HEAT to affected sinus regions. It bathes the irritated, inflamed membranes of nose and upper throat with soothing medicated hot vapor, helps to loosen mucus, to clear stuffed nasal passages, to reduce swollen membranes, and make breathing easier. MEDOVAPO is not used like "nose drops"—it is a new steam-vapor inhaling treatment. No matter how many other things you've tried, remember, MEDOVAPO users are delighted with the results they are getting with persistent MEDOVAPO Inhaling Treatment.

(A Personal Demonstration) By Mrs. Myrtle Weiser Direct from the Medovapo Laboratories

Demonstrations at the following stores: Meridian and Washington Illinois and Washington Penna. and Washington (On sale at all stores)

Hook's Dependable Drug Stores

Grand Opening Sale!

Starts Tomorrow!

It's Here...to save you money! The Grand Opening Sale of the new Fairway Furniture Co. Tomorrow morning promptly at nine-thirty we throw open the doors of this brand new store...with brand new stocks...with a new value-giving policy! Through co-operation of several nationally known manufacturers we are able to present this great value-giving demonstration. An event that will long be remembered!

OUR POLICY

- One Low Price to Everybody
- All Goods Marked in Plain Figures
- Liberal Trade-in Allowances
- Generous Terms to All

Our Guarantee:

Every Piece of Merchandise Carries Full Fairway and Factory Guarantee.



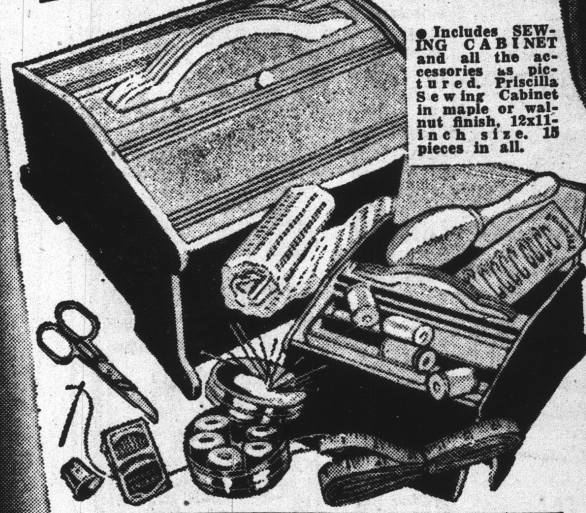
Formerly Pearson's
W. Washington St. Store
133-135 W. Wash. St.

GIVEN

WITH ANY PURCHASE OF \$10 or MORE

"Priscilla"

SEWING CABINET



Regular \$29.75 Innerspring
STUDIO COUCHES
With Arms and Back...**\$19.75**



50c A Wk.

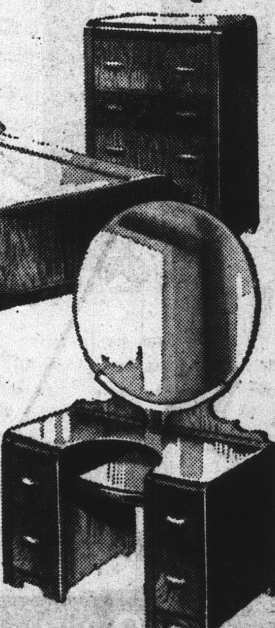
Opening Special No. 4

5-Ply Walnut Veneer

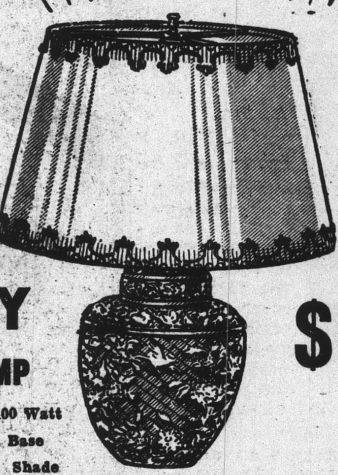
Waterfall BEDROOM SUITE

\$59.95
\$1 A Week

A genuine 5-ply walnut veneer 3-piece bedroom suite with a beautiful drop front vanity with powder shelf and large round mirror. Unusually attractive hardware. Fronts in beautiful matched burr walnut.



OPENING SPECIAL NO. 1



Regular \$2.50 Value!

3-WAY TABLE LAMP

- 3-Way Bulb 40, 60, 100 Watt
- Substantial Pottery Base
- Beautiful Tilt-Type Shade

Cash and Carry Only! Just 36

\$1

Opening Special No. 2

\$89 LIVING ROOM SUITES... \$79 LIVING ROOM SUITES
\$69 LIVING ROOM SUITES

Choice of One Large Group
**MOHAIRS...VELVETS
TAPESTRIES...VELOURS**

In Modern, Period Classic
And Many Other Designs

Kroehler and Others Included

Your Choice

\$50

\$1 A Wk.



Just 30 Suites at this price. Many nationally known makes including Kroehler, Artistic and others. All sturdily built frames, some with wood trimming. Your choice of covers and colors. An example of Fairway's unparalleled values.

9x12 AXMINSTER RUGS

Regular \$42.50 Values

\$29.75

50c A WEEK



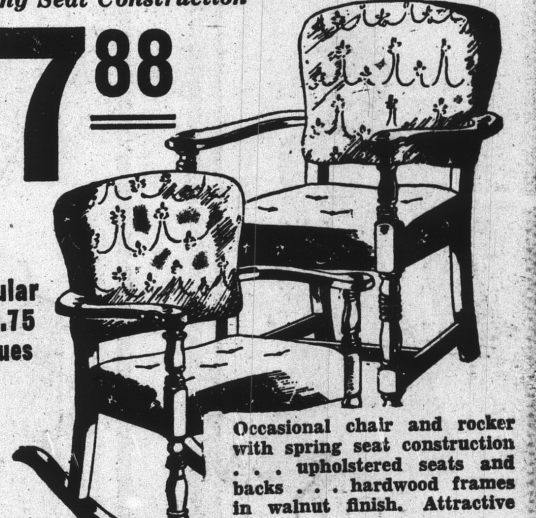
OPENING SPECIAL NO. 3

OCCASIONAL CHAIR AND ROCKER

Spring Seat Construction

\$7.88

Regular \$12.75 Values



Occasional chair and rocker with spring seat construction...upholstered seats and backs...hardwood frames in walnut finish. Attractive cover.

INNERSPRING MATTRESS



Your Choice of BELGIAN DAMASK, SATEEN, A.C.A., Fancy WOVEN STRIPES and PRINTED TICKING

Worth Many Dollars More
\$7.95
50c A WEEK

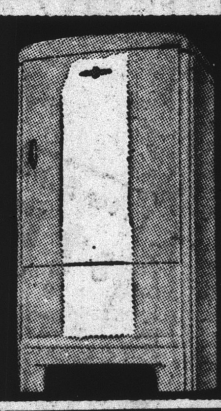
Your choice of many serviceable tickings in beautiful colors and patterns. You sleep in luxury on a deep cushion of felted cotton liners and thick sisal pads with deep innerspring construction.

NEW 1940—6 CU. FT.

FRIGIDAIRE

Now Only

\$114.50



- Complete With Light
- Uni-Matic Cold Control
- 11.4 Sq. Ft. Shelf Area
- Durable Finish Exterior
- Efficient Super Freezer
- 1-Pc. All-Steel Cabinet
- 6 Pounds Ice Capacity
- Stainless Porcelain
- Interior Automatic Re-Set Defroster
- 15c a day all you pay on the meter plan

Fairway Furniture Co.
133-135 W. WASHINGTON ST. LI. 4587

Formerly Pearson's W. Wash. St. Store

Open Friday and Monday Evenings 'Til 9 a. m.

No Carrying Charge in 30 Days—Otherwise Small Charge.