

## NYA CHIEF SEEKS NEW EDUCATION IDEA FOR YOUTH

Dr. Judd Cites Changing  
Setup in Nation, Urges Per-  
manent Policy for Aid.

CHICAGO, March 31 (U. P.).—Dr. Charles H. Judd, educational director for the National Youth Administration, today had called for a reorganization of the American educational system with a broad program, rather than emergency measures, to deal with the changed status of youth.

Addressing the annual meeting of the North Central Association of Colleges and Secondary Schools, Mr. Judd said that "uncertainties" over continuing Federal educational grants had arisen because "the American people are unaware of certain fundamental changes which have taken place in the national life of the United States and have completely altered the status of youth."

### Comments on Experiments

"The experiments which have been carried on in recent years through the Civilian Conservation Corps and through the National Youth Administration were not prompted by any clear recognition of the extent to which American education is in need of basic reorganization," he said.

"What has been done in the past few years has been nothing more or less than a belated effort to meet by purely temporary measures a situation which has been gradually coming upon this country for years and is now threatening to mature into a widespread catastrophe."

"The Federal Government was forced to take a hand in the care of young people in the present period . . . to inaugurate experiments which seemed necessary and which could not be delayed while people in general grew intelligent about their needs."

"The time has come now when more emergency measures must be replaced by policies."

Mr. Judd listed two causes for the inability of young people "to start their individual careers by the devices which made it possible for young people of earlier generations to get a start."

### Cites Changing Nation

"First, the population of the United States has for 150 years been changing from a population in which young people were in the majority to a population in which young people are so much in the minority that they cannot compete for places in industry with the older members of the population," he said.

"The second fact which is as important as exclusion from industry is the fact that young people can no longer move west and have farms given to them by a generous government."

"Thus it has come to pass that young people are burdens to the taxpayer, to society and to themselves."

Mr. Judd asked the educators to assume leadership in formulating educational policies to meet new requirements.

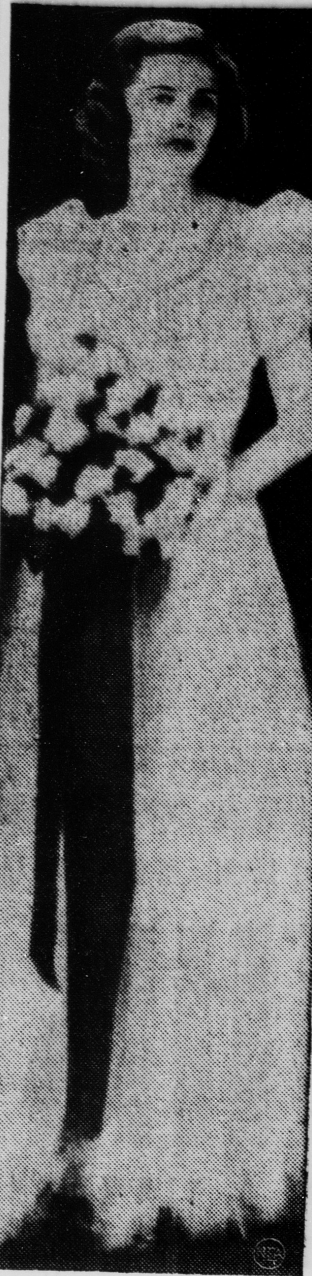
"The country needs a policy," he said. "If that policy is not formulated by educators, it will be formulated under the pressure of forces that are impelled by motives other than those which are most favorable to young people."

### FIDAC RAPS POLICY OF HITLER REGIME

PARIS, March 31 (U. P.).—The Fidac, international war veterans' association long noted for its friendly relations with German ex-soldiers' organizations, today had published a resolution marking the end of that contact and condemning German policy.

The resolution said, in part: "To their bitter disillusionment, Fidac is convinced by recent events that the German Government is determined to pursue the path of force and ignore its engagement, no matter how solemnly undertaken."

### Cotton Queen



Regal, charming Elizabeth Phelps Farnsworth, Vassar College student, will reign as queen of the mid-South's 1939 Cotton Carnival, beginning May 9, at Memphis, Tenn.

### STATE LEADERS OF HI-Y MEET

14th Annual Conference  
Opens at Y. M. C. A. To-  
night, Ends Tomorrow.

The opening session of the 14th Sponsors Conference will be held at 7 o'clock tonight at the Central Y. M. C. A.

George B. Corwin, national association president, will give the opening address. Officials estimate a total attendance of about 250 persons.

R. Carl Alford, Indianapolis "Y" assistant boys' secretary, will preside at a sponsors' breakfast at the "Y" tomorrow morning. The morning session will be held at the World War Memorial. There will be a forum led by Mr. Corwin and group meetings to discuss problems of officers, members and sponsors.

Following a dinner at 12:15 p. m. there will be a series of lectures by State Hi-Y leaders. Vernon D. Parker, Indianapolis Y. M. C. A. boys' work secretary, will talk on "Effective Devotional Projects."

The conference will adjourn tomorrow afternoon.

**USE 19 WALLPAPER**  
STRAIGHT 73¢  
**MARTIN ROSENBERG**  
302 N. DELAWARE ST.



Women's New "Frilly"  
**EASTER  
BLOUSES**  
**\$1.98** ★

New pure silk tailored styles and rayon crepe models. New creations for wear with suits and skirts. Included are many short sleeve jacket blouses that are so in demand. Choose from prints, whites and all the new plain shades. Sizes 32 to 46 in the group.

Star Store, Street Floor.

Women's New  
**Easter GLOVES**  
**\$1.00** ★

Leather palm or leather back fabric gloves—clever new styles in black, navy, japonica, cranberry, etc. Sizes 6 to 8½.

Star Store, Street Floor.

## BUY ON OUR

**STAR** SINCE 1888  
*Spring and*  
**Events**

### Buy on Our Convenient 10-PAY PLAN

A convenient credit plan adaptable for every family. You simply make application at our credit office, then do your shopping and pay a small down payment, and pay the balance in 10 equal weekly payments. You get your purchase at once, no fuss, no delay.

# OPEN SATURDAY NIGHT

Special Purchase and Sale of  
**\$13.95 and \$12.95**  
Plus Many Regular \$10.95 Garments

## COATS AND SUITS

**\$10.95** ★

Women's \$26.95 Beautifully Fur-Trimmed  
**THREE-PIECE SUITS  
and COATS**  
**\$19.95** ★

**Coat Materials**  
Needle point, Kinkana fabrics, suedes, Angoraine fleeces, cellophane stripes, eponges, tweeds, plaids and striped boucles.

**Coat Colors**  
Black, navy, blues, berry, beige, grape, green and mixtures.

**Suit Materials**  
Man tailored styles in worsteds, gabardines, pencil stripes and plaid combinations.

**Suit Colors**  
Blacks, greys, oxfords and, of course, navy.

★  
**Coat Sizes:**  
12 to 20  
38 to 52  
**Suit Sizes:**  
12 to 44



Fur  
Trimmed  
and  
Untrimmed  
Styles



Smart New  
Suede or Fleece  
**TOPPERS**  
**\$3.95** ★

All the season's newest shades. Sizes 12 to 20.

### Women's Gay New FORMALS and DRESSES

**\$6.95** ★

The season's smartest one and two-piece sheers, alpaca, prints and laces in green, tan, navy, black, rose and blue. Sizes 12 to 20.

Gorgeous new formals in nets, laces and chiffons. One-piece and bolero effects, in the best colors and white. Sizes 12 to 20.

Star Store, Second Floor.

ANOTHER SPECIAL GROUP OF  
DRESSES AND FORMALS . . . **\$3.98**

### Women's and Girls' NEWEST EASTER FOOTWEAR

**\$1.98** ★



Beautiful new patents, gabardines, and kids in Japonica, black and blue. High heels, Cuban heels and low heels. All sizes 4 to 9. Buy now while size ranges are still complete.

Star Store, Street Floor.

Two Popular Price Groups in Men's

### FELTHATS

**\$1.95 and \$2.95** ★

Newest shapes and colors. Plenty of green and light greys. Above all, you need a new hat for Easter. Sizes 6¾ to 7½.

Star Store, Street Floor.



Men's Stylish Dress

### OXFORDS

Union Made by Walter Booth

**\$4.00** ★



New French toes, wing tips, scows, etc., in blacks and browns with thick crepe rubber or plant leather soles. Rubber or leather heels.

Sizes 6 to 11

Star Store, Street Floor.

Boys' Two Long Pa

### Easter SUITS

**\$9.95** ★

All wool fancy cassimeres in popular greys, browns and greys. Double breasted coats of pleated pants. Sizes 8 to 18.

2 Long Pants, Juvenile Suits, Sizes 6-

Star Store, Street Floor



Men's

D

def

### MAKE DELICIOUS FROZEN DESSERTS WITH THE NEW VITAMIZED MILNUT...



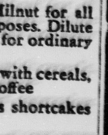
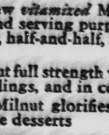
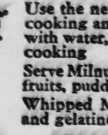
Now Richer in Vitamins A, B, D, and G  
But Still Costs Less  
Than Canned Milk!

**NUTRITIOUS!  
DELICIOUS!  
ECONOMICAL!**

### TRY THIS DELICIOUS DESSERT TODAY— COFFEE-MILNUT FROZEN DESSERT

Melt 20 marshmallows in one cup of boiling coffee. Stir until smooth. Add ½ teaspoon vanilla. Chill until slightly thickened. Whip one cup Milnut and add to coffee-marshmallow mixture. Freeze without stirring.

**YOUR MONEY BACK** if you are not entirely satisfied with Milnut for all cooking and serving uses. Return empty container with your reasons, to Carole's Products Company, Litchfield, Illinois. Purchase price promptly refunded.



FOR COFFEE

FOR COOKING

FOR BAKING

FOR COFFEE

FOR COOKING

FOR BAKING

FOR COFFEE

FOR COOKING

FOR BAKING

FOR COFFEE

FOR COOKING

FOR BAKING

**MILNUT**  
SO RICH IT WHIPS!  
RICHER IN VITAMINS  
A, B, C, AND G THAN ANY  
ORDINARY CANNED MILK