

STATE SPEEDING BUILDING OF NEW WELFARE UNITS

**\$10,000,000 Program Due
To Be Carried Out
Within Year.**

By DAVID MARSHALL
Indiana's \$10,000,000 institutions building and modernization program, which will relieve overcrowded conditions in the State's mental hospitals and benevolent and penal institutions, was well under way today, State Welfare officials reported.

By this time next year, officials said, the State will have replaced antiquated structures with new, modern buildings. It will have a new Tuberculosis Hospital at New Albany second to none in the Midwest and increased facilities for the indigent, they said.

The building program was started several weeks ahead of the Jan. 1 deadline set by PWA, which is financing 45 per cent of the cost, toward which the State has appropriated \$6,000,000.

Here is what is happening along the institutions building front, which stretches from northern to southern Indiana and includes eight cities:

INDIANAPOLIS—Central State Hospital—Cottage groups are being built to replace the men's ward buildings, built in 1846. Four cottages out of the seven to be constructed have been finished.

Each cottage will house 160 patients and will cost \$250,000.

Women's Prison—A cottage for recreational and educational activity is under construction and a new chapel is about half completed. Plans call for a new storeroom and power plant to be housed in a third building.

Indiana School for the Deaf—New boilers are being installed. The conveyor and elevator systems and power house stock have been completely renovated.

Indiana Girls' School—A new chapel will be built of stone and brick, New England style architecture. It will be completed by July.

BUTTERVILLE—Muscatauck Colony will be practically a new institution when the building program there is completed within two years. More than \$2,300,000 is to be spent by the State and Federal Governments to make this a complete training school for 2500 mental patients.

At present, two new cottages, a power plant, a service building, a school, a superintendent's residence and a hospital are being built.

Contracts were awarded during December for a new administration building, two infirmaries, two employees' buildings and 13 dormitories. Utilities to serve the new structures will cost approximately \$500,000. New drives, walks, roads, bridges, grading and landscaping are to be added.

NEW ALBANY—A new institution, to be known as the Southern Indiana Tuberculosis Hospital, is to replace the present Floyd County Tuberculosis Hospital. It is to care for tuberculous residents needing hospitalization and is to be dedicated by January, 1939. The PWA supplied \$282,500 of the \$650,000 appropriation.

NEW CASTLE—The administration building at the Indiana Village for Epileptics is now being equipped and will be ready for occupancy next week. It is a one and two-story brick structure with the second floor extending over the center of the building.

On the top floor will be a control room for radio to all departments. Corner windows and the use of glass brick provide light without glare.

RICHMOND—Ground has been broken for the \$200,000 recreation building at the Richmond State Hospital which is to be located just north of the present medical building.

The recreation quarters, which are over the attendants' dining room and kitchen, will be converted into attendants' apartments. The new hospital, now ready for occupancy, is equipped with modern facilities for care and treatment of the mentally ill. It was built at a cost of \$235,000 and equipment worth \$19,000 has been purchased.

EVANSVILLE—A \$106,150 employees' building, to be finished in September, 1939, has reached the foundation stage at Evansville State Hospital.

PLAINFIELD—Three double dormitories or cottages and one single cottage, to replace structures erected in 1867, are being built at the Indiana Boys' School. Also included in the program is the remodeling of the power plant by the installation of boilers, stokers, coal and ash handling equipment, turbo-generators, a distribution system, motors, water softeners, water tank tower, refrigeration and cold storage equipment, conduit tunnels and electrical wiring. All remodeling and new structures are to be completed in 1939.

LOGANSPORT—Of the buildings now under construction at the Logansport State Hospital, a new ward will serve as an administrative unit after its completion about July 1.

A personnel building to quarter 160 employees is scheduled to be finished by Nov. 1. A men's ward of the infirmary type and a women's ward, both to house 160 patients each, will also be completed at that time.

LAFAYETTE—The Indiana State Soldiers' Home program is to include remodeling of the present Widows' Home into a home for World War veterans. The old hospital building is now being remodeled as the new Widows' Home.

A Three Days' Cough Is Your Danger Signal

No matter how many medicines you have tried for your common cough, chest cold, or bronchial irritation, you may get relief now with Creomulsion. Serious trouble may be brewing and you cannot afford to take a chance with any remedy less potent than Creomulsion, which goes right to the seat of the trouble and aids nature to soothe and heal the inflamed mucous membranes and to loosen and expel germladen phlegm.

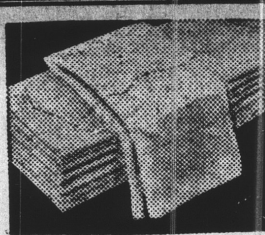
Even if other remedies have failed, don't be discouraged, try Creomulsion. Your druggist is authorized to refund your money if you are not thoroughly satisfied with the benefits obtained. Creomulsion is one word, ask for it plainly, see that the name on the bottle is Creomulsion, and you'll get the genuine product and the relief you want.



Women's All-Wool Twin SWEATERS

\$2.98 to \$4.98
Values
★
\$2.69

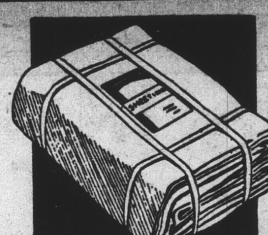
Silpover, underneath sweater and button front coat sweater. Black, grey, brown, rust, etc. Good assortment of sizes, 36 to 50 in the lot.
Star Store, Street Floor



36-in. Truth Pillow TUBING

11c yd.

Snowy white, bleached, fine count tubing that will give 4 years of ordinary wear. 19c value. Cut from full bolts. No filling.
Star Store, Basement



87-in. Unbleached SHEETING

12 1/2c yd.

Ideal weight for sheets or quilt linings. Will bleach with a few washings. 17c value. Full bolts.
Star Store, Basement



36-in. Cloth of Gold PERCALES

10c yd.

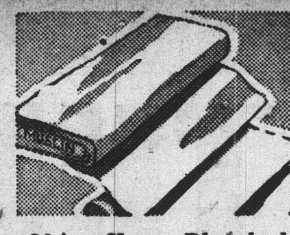
Plain colored percales, also 80 squares. Large assortment of tubfast colors. Mill lengths of 2 to 10 yards. Sells at 19c from bolts.
Star Store, Basement



80x105-in. Krinkle Bed SPREADS

55c ea.

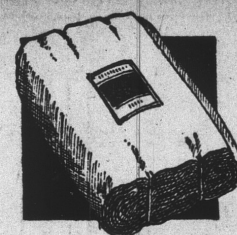
Colorful cotton Krinkle spreads. The extra length forms the bolster. Choice of pink, blue, gold, and green. Actual 79c values.
Star Store, Basement



36-in. Hope Bleached MUSLIN

8c yd.

Nationally known, snow white muslin for general household uses. All full bolts.
Star Store, Basement



27-in. Bleached OUTING

6 1/2c yd.

Heavily napped, bleached outing flannel. Mill lengths of 2 to 10 yards. Sells from bolts at 10c.
Star Store, Basement

Women's Straight Cut BROADCLOTH SLIPS

Sizes
34 to 52

38c

Built-up shoulder, non-cling broadcloth slips with picot yoke in blush and tea rose. Generous, full-cut garments with deep bottom hems.
Star Store, Street Floor.



Clearance Women's Winter COATS

Out They Go! \$35.00-\$29.95
& \$24.95 Furred Styles

Luxurious fur treatments, smart fitted or boxy styles in sizes 12 to 60. A spectacular selling of quality coats.
\$18 ★

Special Purchase and Sale of Fine FUR COATS

Gleaming Northern Seals (dyed rabbit), made of selected buckskin pelts. You'll like the superb workmanship and style. Linings are guaranteed two years. Sizes 12 to 44.
The \$89.95 Kind
\$55

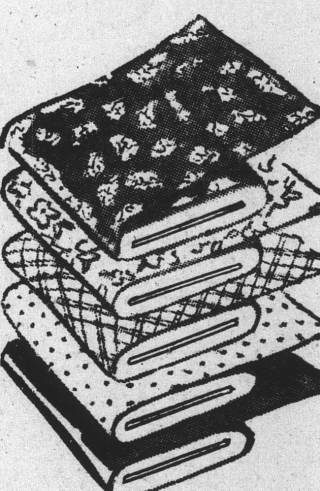
Women's Smart New SPRING DRESSES

A group of fashionable dresses just unpacked. A good assortment of plain colors and gay prints.
\$3.98 ★

Special Selling 5,000 Yds. 36-In. DRESS PRINTS

- ★ All Full Bolts
- ★ 80-Square Thread
- ★ Guaranteed Tub Fast
- ★ Beautiful Patterns
- ★ Actual 19c Values

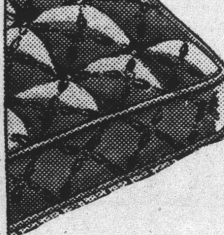
11c Yd.



Cut From Bolts! Not Shorts!

A lucky special purchase makes this low price possible! Over 100 new, colorful patterns in small figures, medium figures, large figures and bright stripes. Buy several dress lengths tomorrow while selection is largest.
Star Store, Basement.

Full Bed Size Cotton MATTRESSES



Covered in beautiful, floral art ticking. Rolled edge, diamond tuft. A limited number to sell at this low price. No phone or C. O. D. orders please.
\$4.49 ★

Lounge Chairs (Spring-filled Cushions) \$8.95
Walnut Finished End Tables, Pie Crust Edge 49c
8-ft., Hardwood Quilting Frames. . . . \$1.98
Star Store Furniture Dept., 3d Floor.

WE CLOSE SATURDAYS 6 P.M.

Special Purchase—Full-Fashioned SILK HOSE



Carefully Selected
Seconds of 89c
to \$1.00 Grades
39c

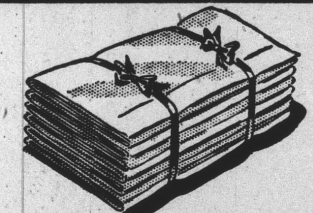
Every pair made on three carrier, ringless machines. All are clear, sheer chiffons with high spliced heels, lace run stops, sandal soles, reinforced heels and toes. All sizes 8 1/2 to 10 1/2 in a good assortment of fashionable colors.
Street Floor



Special Purchase & Sale 4,000 Yds. 39-IN. CURTAIN MATERIALS

ALL FULL BOLTS
6c Yd.

Wide tape selvage, French marquisettes in new dark ecru shades. Ideal for every room in the home. A spectacular value, while quantity lasts.
Star Store, Basement.



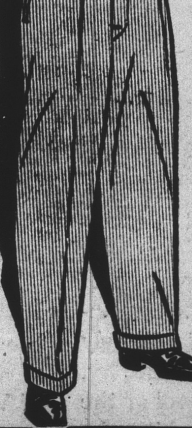
Everwear Bleached SHEETS

The 4 Year Kind

72x99 and 81x99 Sizes
73c ea.

Snow white, bleached sheets of heavy thread construction, with wide tape selvage. Will give 4 years of ordinary household wear.
42x36 PILLOWCASES, each, 21c
Star Store, Basement.

Men's \$2.59 & \$2.98 CORDUROY PANTS



Special
\$1.98 ★

Plain or patterned corduroys in good practical and dressy styles. Sizes 29 to 42.
Star Store, Street Floor.

Women's Regular \$1 WASH DRESSES

A marvelous group of smartly styled, fast color wash frocks. Many new spring styles added to our regular stocks. Sizes 12 to 20—38 to 44—46 to 50.
Star Store, Second Floor.

88c

Regular \$1.98 Spun Rayon DRESSES 2 for \$3.00



Sizes 14 to 46

★

Unrestricted Choice \$3.95 & \$4.95 D.R. HALES

Arch Cure Shoes for Women

All Sizes
4 to 9
AAA to E
\$2.88 ★

Expertly Fitted

Only twice each year do you get a chance to buy these perfect fitting, foot caressing shoes at this money saving price. Browns, blacks and blues in kid, gaberdine or suede oxfords, ties, straps and pumps. Buy during our Loom End Sale and save plenty!
Star Store, Street Floor.

LOOM END FEATURE Men's Regular \$19.95

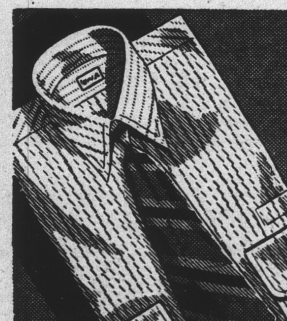
Suits, Topcoats and Overcoats

\$12.88 ★

SUITS of all-wool fancy worsteds, conservative or snappy sports models. Sizes 34 to 46.

TOPCOATS—New, dressy plaids and checks or fleecy plain shades. All around belts, set-in or raglan sleeves and Balmacaan styles. Sizes 33 to 46.

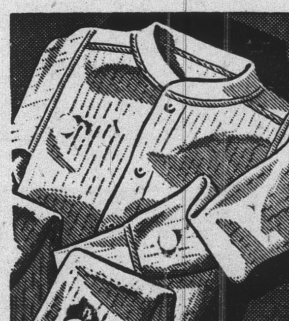
O'COATS—Big, warm, burly, all-wool, blue meltons, with belted backs. Sizes 35 to 44.
Star Store, Street Floor



Men's Regular 79c & \$1.00

Dress SHIRTS

Choice of all men's 79c and \$1.00 shirts. Fancy broadcloth shirts with fused collars. Sizes 14 to 17.
Star Store, Street Floor.



Men's \$1.00, \$1.29 & \$1.59

Union SUITS

Warm, weight, ribbed cotton suits from a well-known underwear mill. Short or regular length models. Sizes 38 to 46. Broken into lots and slightly irregular. Fine quality, 10% wool suits.
Star Store, Street Floor.

69c