

Million Hillbilly Children Found in Need; Welfare Workers Bring Hope to South

KNOXVILLE, Tenn., Oct. 12 (NEA)—A million children living sub-standard lives, and at least 100,000 of them undernourished and in dire need.

That is the picture of 205 Appalachian Mountain counties, a side of the picture not often seen by tourists and others fascinated by the "quaint" lives of the natives of the mountain regions of Tennessee, Kentucky, Virginia and North Carolina.

It is a vivid side-light on the National Emergency Council's picture of the South as a great region need-

ing so many things for development. It is an accurate picture, for it is drawn by Dr. Alva Taylor, Nashville sociologist and educational director of the Save the Children Fund.

This fund since 1931 has reached 50,000 children in the mountain regions, bringing welfare services, food, clothing, and simple medical help in regions where no other welfare organization penetrates. It has touched some 50 of the 205 counties surveyed by Dr. Taylor.

Its workers have found many instances of the stark privation that lies behind the "quaint" life of the

highlanders. For instance, in one school attendance rose from 48 to 56 in a single week. That was the week in which the SCF welfare worker was in the district distributing shoes and clothing. The 17 families did not have even the rudimentary clothing a child needs to attend the mountain schoolhouses.

Welfare workers who travel hundreds of miles into the hills where the "traces" are mere paths half obliterated in the brush, tell of children walking miles barefoot on snow and ice to get to school. Thousands of such children have been given the shoes whose lack meant

condemnation to ignorance and illiteracy.

The reports of such welfare workers tell a tale of squalid helplessness that includes children brought into the world without a doctor's services, old flour sacks

their only lavette, sent shoeless to school if indeed a school is available, condemned to a life of heart-breaking toil on washed-out hillsides, deprived of medical care in illness, and even of an undertaker's services in death.

Half of the farms in the 205-mountain-county area, Dr. Taylor found, are of less than 50 acres. A fourth of them are of less than 20 acres. The average of cultivated land is only seven acres per adult

male worker. Three-fourths of the crop land has a slope of 40 per cent or more, and "where there is poor land, there are poor people."

Hundreds of gallons of cod-liver oil have been sent into the area by welfare organizations to counteract the monotonous and deficient diet. One mountain woman walked six miles each day to make soup for her own and 50 other school children. On one occasion she asked each child to bring one potato for soup. Only five were able to do so.

That is the sort of condition met face to face by welfare workers who are going back into the hills to attack at its roots the acute problem of the South's mountain people.

SKEETERS AID POLICE

DALLAS, Oct. 12 (U. P.).—Nature came to the aid of law officers who for several days sought Luke French after French—self-styled "tough guy"—got drunk and shot two men. Hiding out from the officers in bottoms of a river, French was attacked by mosquitoes and bitten so badly that he became ill and surrendered.

PLASTIC NOSES MADE FROM LATEX RUBBER

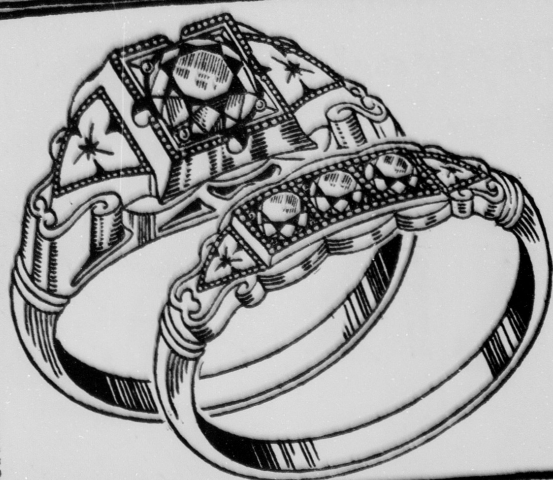
WASHINGTON, Oct. 12 (U. P.).—A Detroit scientist told the American Academy of Ophthalmology and Otolaryngology today that plastic

surgeons have developed a new technique to make noses, eye sockets and ears from latex rubber and dead men's ribs.

Dr. Claire L. Straith, Detroit surgeon, said the new technique was created to meet surgical problems created by a new type of disfigure-

ments—"windshield wounds." He said cartilage from human ribs can be preserved in refrigerators and used by plastic surgeons. Ears, noses and other features made of latex rubber were described by scientists as suitable for replacing lost members.

KAY'S 24TH Anniversary SALE



4-DIAMOND COMBINATION
\$24.24

24c Down—24 Months to Pay

GORGEOUS solid gold matched mountings, with solitaire engagement and 3 diamond wedding band. 24th Anniversary Sale Feature!



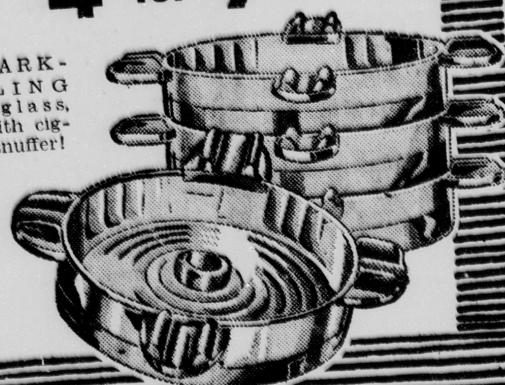
AUTOMATIC LIGHTER

37c

HANDSOME buffed nickel finish with wind guard (removable) for lighting pipes. No gadgets to get out of order. A snap and it lights!

Glass ASH TRAYS
4 for 7c

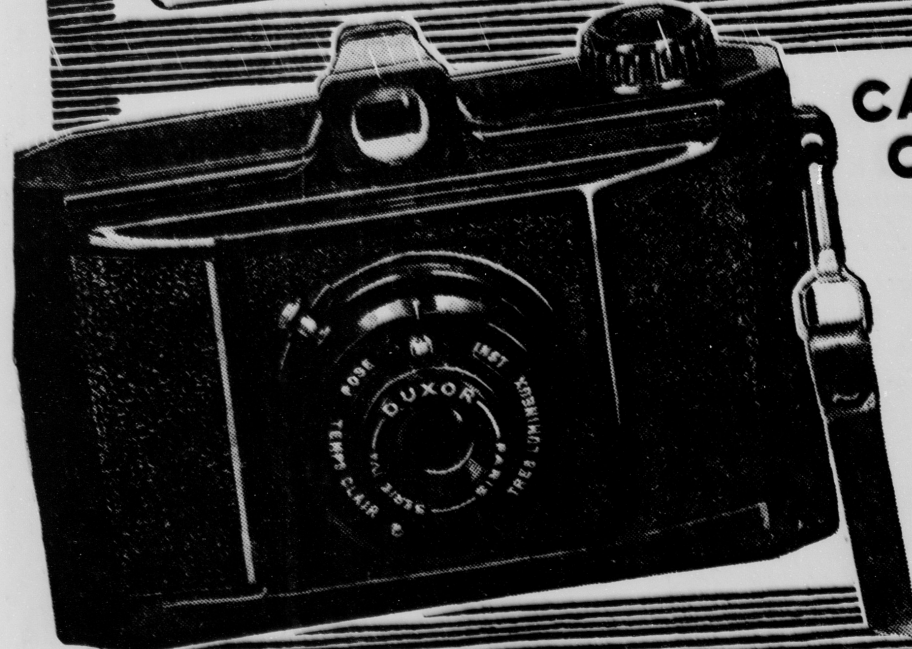
SPARK-LING crystal glass, each with cigarette snuffer!



CANDID TYPE CAMERA
\$26.4

24c DOWN

PRECISION lens and shutter, with time and instantaneous stops. Cable release attachment! Uses inexpensive film! Optical View Finder! Anniversary Feature Value!



NO INTEREST OR CARRYING CHARGES

AMERICA'S LARGEST CREDIT JEWELERS

KAY JEWELRY COMPANY

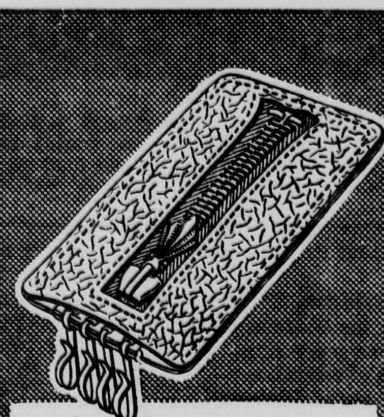
137 W. Washington St.



"MISS 1939"

\$9.24 24c DOWN

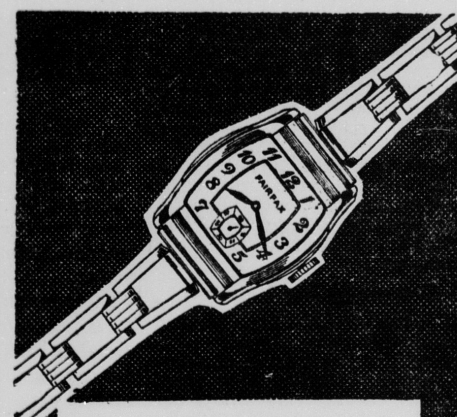
EXQUISITE solid gold engraved mounting, Triple Tested Diamond!



ZIPPER KEY CASE

8c

UNIQUE new idea in key-cases that gives your keys to you with a zip!

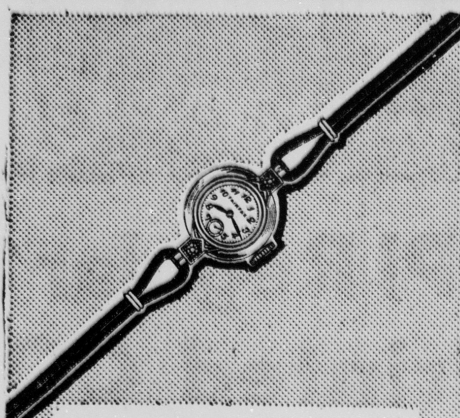


MAN'S FAIRFAX

\$8.24 24c DOWN

STREAMLINED polished chrome case! Finely jeweled movement!

A WORLD'S FAIR of VALUES



Lady's 2-Diamond Fairfax

\$16.24 24c DOWN

YELLOW gold top enhanced by 2 genuine diamonds. Jeweled!

24 Months to Pay

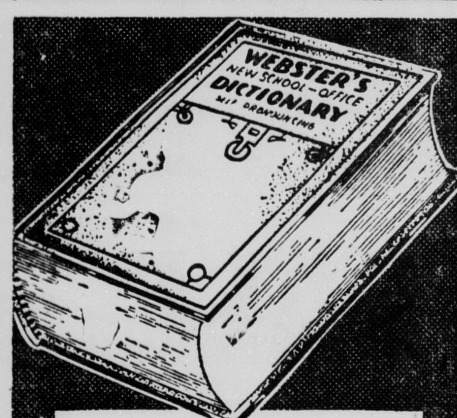


THE "HELEN"

\$37.24 24c DOWN

EXCLUSIVE Stylecrest solid gold mounting—7 gorgeous diamonds!

24 Months to Pay



Webster's Dictionary

34c

RICH looking dark color binding. Up to the minute! Authentic!

24c DELIVERS ANY ITEM

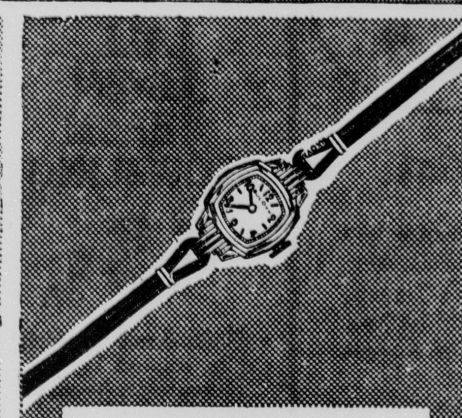


THE "EVA"

\$49.24 24c DOWN

SET with 5 brilliantly cut Triple Tested Diamonds! Solid Gold!

24 Months to Pay



THE "LADY BULOVA"

\$29.75 24c DOWN

DAINTY case in the color and charm of yellow gold 17 Jewel movement!

24 Months to Pay



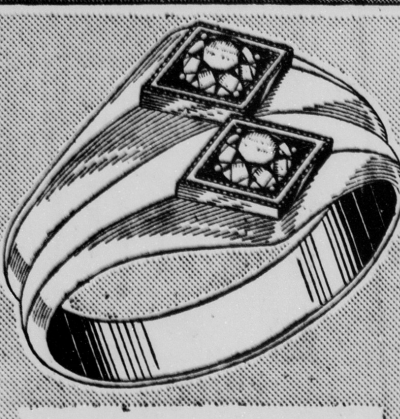
THE "MARJORIE"

\$29.24 24c DOWN

SOLID gold engraved mounting, set with 3 exquisite diamonds.

24 Months to Pay

24-MONTHS TO PAY



MAN'S 2-DIAMOND RING

\$39.24 24c DOWN

UNIQUE massive solid gold mounting, set with 2 superfine diamonds!

24 Months to Pay

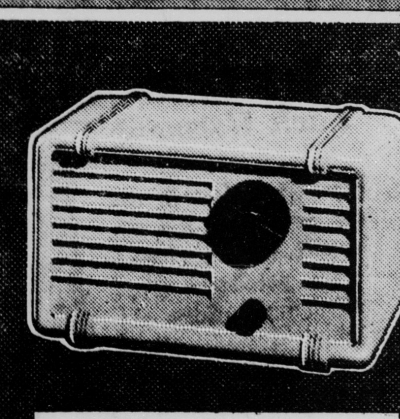


BENRUS SIGNET

\$19.75 24c DOWN

THE famous watch that's set with your own initials. Jeweled!

24 Months to Pay



BEVERLY RADIO

\$7.24 24c DOWN

THE traveling companion—fits right in your suitcase! AC-DC! Ready to plug in!