

# COUNTY YOUTH INSTITUTE TO OPEN MONDAY

## 3 Topics of Discussion Are Listed

### Meetings Are to Be Held In First Presbyterian Church.

A three-day institute for youths is to be held in First Presbyterian Church beginning Monday.

Sponsored by the Marion County Council of Christian Education, the institute is to be divided for three discussion topics, "Youth and Worship," "Youth and Leisure Time," and "Youth and Social Problems."

Miss Mabel Guttery, First Presbyterian Church religious education director, is to be in charge of the first meeting. The Rev. Robert Tully, Akron, and the Rev. C. R. Lizenby, pastor of the St. Paul's M. E. Church here, are to lead the discussion on leisure time.

The third group, "Youth and Social Problems," is to be led by Cleo Blackburn, Flanner House superintendent.

ON PROGRAM

## Missionary To Speak on Arctic Work

### Monticello Resident to Be Heard by Men's Bible Class.

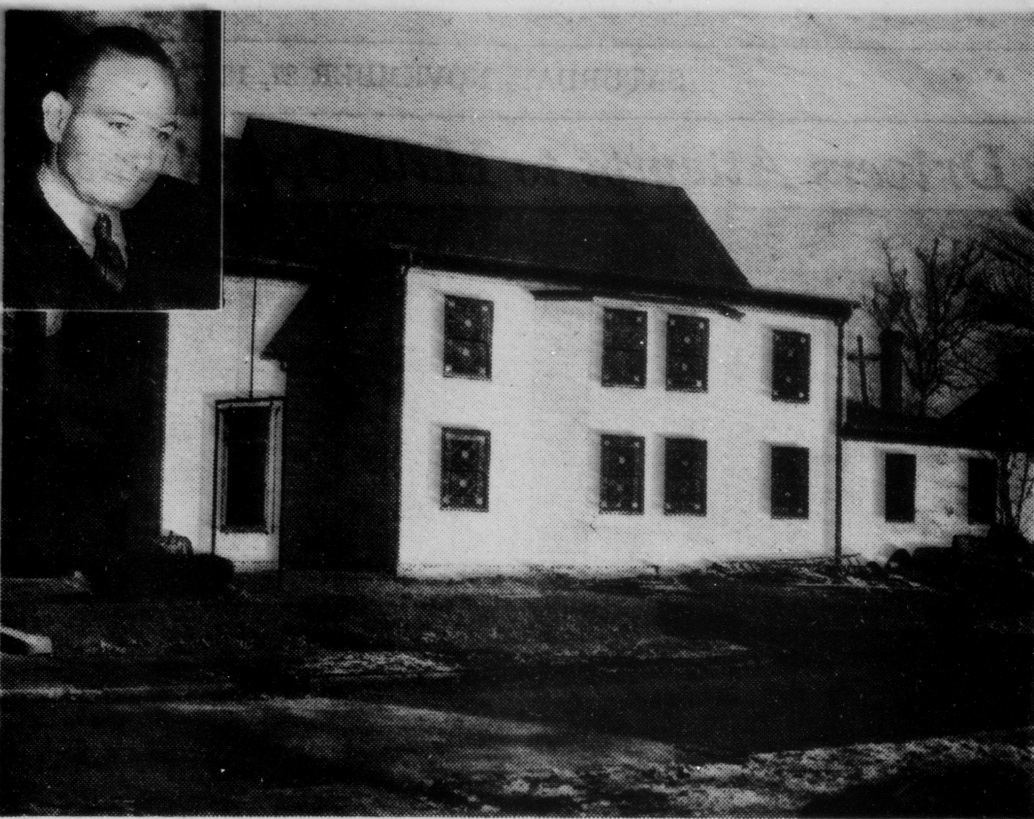
The Rev. C. R. Lizenby (above), St. Paul's M. E. Church pastor, is to lead discussions on "Youth and Leisure Time" at a three-day youth institute beginning Monday at the First Presbyterian Church, Delaware and 16th Sts.

Dr. Henry W. Greist, Hooster itinerant medical missionary who spent 17 years as a dog-mushing, doctor-preacher in the frozen Arctic, is to be guest speaker at the Tabernacle Presbyterian Men's Club dinner at 6:30 p. m. Friday, Dec. 3. His home is in Monticello.

He is to describe his experiences among the Eskimos as head of the northernmost hospital in the world, where there was no other doctor within 1000 miles.

He treated more than 2000 Eskimos along the 1000-mile coast line, and is to tell of the battles waged against epidemics in the Arctic wastelands. He was the companion of many notables, including Will Rogers and Wiley Post, who died in an air crash 15 miles from his home at Point Barrow.

## CHURCH ADDITION TO BE DEDICATED



The recently completed addition to Woodruff United Presbyterian Church (above), 1201 N. Arsenal Ave., is to be dedicated in special services tomorrow.

The Rev. William C. Ball (inset) pastor of the church, is to deliver the dedicatory address to mark the opening of the addition that will augment Sunday School facilities.

The Church Federation of Indianapolis is to be represented at the ceremonies.

## Missionary To Be Heard

### Class to Learn of Work In Northland.

A lecture on the Passion and Resurrection of Christ is to be delivered by the Rev. Dr. Thomas A. Nolan, S. J., of Xavier University, Cincinnati, at 8 p. m. tomorrow in the Church of the Holy Cross.

Illustrating his lecture, Father Nolan is to show slide reproductions of 130 world-famous paintings depicting the final days of Christ to the time of his Ascension.

Reproductions of the works of Tizet, Rubens, Velasquez, Da Vinci, Murillo, Reni, Hofmann, Titian, Corregio and Ploekhorst are to be included.

The church male choir of 60 men and boys is to sing under the direction of the Rev. Dr. Victor L. Goossens. The Rev. Dr. William F. Keefe is church pastor.

## Men's Class To Hear Talk

### Mission Pastor to Speak Before C. M. B.

William E. Bell, for nine years pastor of the West Side Mission, is to be guest speaker tomorrow at the meeting of the Christian Men Builders Class.

Merle Sidener, leader of the class also is to speak. Mr. Sidener will center his address on Mr. Bell's work in the mission.

Special music is to be furnished by the Twenty-first Street Baptist Church quartet.

## Alliance Plans Church Rally

### The Rev. Nussbaum to Talk On Group's History.

The Rev. John Nussbaum is to address a city-wide rally at the Christian and Missionary Alliance Church, Park Ave. and 10th St., at 2:30 p. m. tomorrow. He will review the history of the organization.

The address is to mark the golden anniversary of the alliance. A series of nightly meetings as part of the anniversary have been held for a week. They will continue through Dec. 5.

## CHRISTIAN FRUITFULNESS

By W. E. GILROY, D. D.  
Editor of Advance

FROM the figure of sowing and reaping in our last lesson, with the assurance that whatsoever man sows, that shall he also reap, we turn in this lesson to consider somewhat the same thing under the symbol of the vine and its fruitful yield.

How does the vine yield its fruit? Through its roots in the soil, through its contact with the fruit-giving power of nature, through the care with which the vineyard keeper trims it and keeps it directed into disciplined production.

It is in proper contact with the forces of grace and truth that the spiritual vine yields its fruit. Christ is the true vine, and God the Father is the husbandman.

## DIRECTOR



## Plans Music For Vespers

### Broadway Baptist to Hold 'Twilight' Service.

Miss Elsie Adams is to be in charge of the musical program at the Thanksgiving Vesper Service tomorrow at 4 p. m. at the Broadway Baptist Church.

The program for the "Twilight Service" includes numbers by the church orchestra, organ and vocalists.

Opening with an orchestra recital of "Inspiration" the program will close with a tenor solo by Walter C. Bruce, "Thanks Be to God."

A candlelight procession is to be one of the features of the program.

Miss Thelma Grams will sing the soprano solo, "I Will Extol Thee." Others who will sing are Paul Walters and Irene Dodrill.

## Annual Fete Is Outlined

### Christmas Festival to Be on Wednesday.

The annual Christmas Festival of the Broadway M. E. Church calendar-Calendar is scheduled for Wednesday.

## Bazaar Plans Are Drafted

### All Souls Affair to Be Held Friday.

Preparations were being completed today at the All Souls Unitarian Church for the International Christmas Bazaar next Friday.

The event is being sponsored by all organizations affiliated with the church. The advisory committee is composed of Mrs. Fred Doepfers, Mrs. Henry B. Heywood, Mrs. Charles A. Tripp, Mrs. Lehman H. Dunning, Mrs. Frank L. Fisher and Mrs. Clarence Blakelee.

## United Choir Service Set

### Lutheran Singers to Be Heard Tomorrow.

All United Lutheran church choirs in the city are to combine for a music service at 7:45 p. m. tomorrow in St. Mark's Lutheran Church, the Rev. H. B. Benting, pastor, announced today. The program will be directed by the Rev. A. Verman.

The Rev. H. E. Turney, Indiana Synod president, will speak on "Standard Measure."

## IN INDIANAPOLIS CHURCHES TOMORROW

BAPTIST	EVANGELICAL	METHODIST
Woodruff Place—The Rev. L. C. Trent, pastor, Morning, "The Light of the World," 10 a. m.; Evening, "The Structural Plan of Life," 7:30 p. m.	Second—The Rev. P. C. Wozniak, pastor, Morning, "The Light of the World," 10 a. m.; Evening, "The Structural Plan of Life," 7:30 p. m.	Roosevelt Temple—The Rev. L. C. Trent, pastor, Morning, "The Light of the World," 10 a. m.; Evening, "The Structural Plan of Life," 7:30 p. m.
Broadway—The Rev. R. M. Dodrill, pastor, Morning, "The Light of the World," 10 a. m.; Evening, "The Structural Plan of Life," 7:30 p. m.	Broadway—The Rev. R. M. Dodrill, pastor, Morning, "The Light of the World," 10 a. m.; Evening, "The Structural Plan of Life," 7:30 p. m.	Washington Street—The Rev. H. J. Overman, pastor, Morning, "The Light of the World," 10 a. m.; Evening, "The Structural Plan of Life," 7:30 p. m.
River Avenue—The Rev. George D. Bille, pastor, Morning, "The Light of the World," 10 a. m.; Evening, "The Structural Plan of Life," 7:30 p. m.	River Avenue—The Rev. George D. Bille, pastor, Morning, "The Light of the World," 10 a. m.; Evening, "The Structural Plan of Life," 7:30 p. m.	Meridian Street—The Rev. L. C. Trent, pastor, Morning, "The Light of the World," 10 a. m.; Evening, "The Structural Plan of Life," 7:30 p. m.
Memorial—The Rev. George G. Kimsey, pastor, Morning, "The Light of the World," 10 a. m.; Evening, "The Structural Plan of Life," 7:30 p. m.	Memorial—The Rev. George G. Kimsey, pastor, Morning, "The Light of the World," 10 a. m.; Evening, "The Structural Plan of Life," 7:30 p. m.	North—The Rev. C. A. McPherson, pastor, Morning, "The Light of the World," 10 a. m.; Evening, "The Structural Plan of Life," 7:30 p. m.
Emmanuel—The Rev. Harry C. Linde, pastor, Morning, "The Light of the World," 10 a. m.; Evening, "The Structural Plan of Life," 7:30 p. m.	Emmanuel—The Rev. Harry C. Linde, pastor, Morning, "The Light of the World," 10 a. m.; Evening, "The Structural Plan of Life," 7:30 p. m.	South—The Rev. F. T. Taylor, pastor, Morning, "The Light of the World," 10 a. m.; Evening, "The Structural Plan of Life," 7:30 p. m.
First—The Rev. Carlenton W. Atwater, pastor, Morning, "The Light of the World," 10 a. m.; Evening, "The Structural Plan of Life," 7:30 p. m.	First—The Rev. Carlenton W. Atwater, pastor, Morning, "The Light of the World," 10 a. m.; Evening, "The Structural Plan of Life," 7:30 p. m.	Central—The Rev. J. S. Albert, pastor, Morning, "The Light of the World," 10 a. m.; Evening, "The Structural Plan of Life," 7:30 p. m.
Third—The Rev. William F. Rothman, pastor, Morning, "The Light of the World," 10 a. m.; Evening, "The Structural Plan of Life," 7:30 p. m.	Third—The Rev. William F. Rothman, pastor, Morning, "The Light of the World," 10 a. m.; Evening, "The Structural Plan of Life," 7:30 p. m.	St. Matthew—The Rev. L. C. Trent, pastor, Morning, "The Light of the World," 10 a. m.; Evening, "The Structural Plan of Life," 7:30 p. m.
Down—The Rev. C. H. Winder, pastor, Morning, "The Light of the World," 10 a. m.; Evening, "The Structural Plan of Life," 7:30 p. m.	Down—The Rev. C. H. Winder, pastor, Morning, "The Light of the World," 10 a. m.; Evening, "The Structural Plan of Life," 7:30 p. m.	First United—The Rev. Arthur L. Mehr, pastor, Morning, "The Light of the World," 10 a. m.; Evening, "The Structural Plan of Life," 7:30 p. m.
Northwest—The Rev. W. E. Carroll, pastor, Morning, "The Light of the World," 10 a. m.; Evening, "The Structural Plan of Life," 7:30 p. m.	Northwest—The Rev. W. E. Carroll, pastor, Morning, "The Light of the World," 10 a. m.; Evening, "The Structural Plan of Life," 7:30 p. m.	Edgewood—The Rev. M. O. Robbins, pastor, Morning, "The Light of the World," 10 a. m.; Evening, "The Structural Plan of Life," 7:30 p. m.
Twentieth—The Rev. The Rev. Charles M. Filmore, pastor, Morning, "The Light of the World," 10 a. m.; Evening, "The Structural Plan of Life," 7:30 p. m.	Twentieth—The Rev. The Rev. Charles M. Filmore, pastor, Morning, "The Light of the World," 10 a. m.; Evening, "The Structural Plan of Life," 7:30 p. m.	First Church of the Nazarene—The Rev. W. E. Carroll, pastor, Morning, "The Light of the World," 10 a. m.; Evening, "The Structural Plan of Life," 7:30 p. m.
East—The Rev. W. E. Carroll, pastor, Morning, "The Light of the World," 10 a. m.; Evening, "The Structural Plan of Life," 7:30 p. m.	East—The Rev. W. E. Carroll, pastor, Morning, "The Light of the World," 10 a. m.; Evening, "The Structural Plan of Life," 7:30 p. m.	St. Paul—The Rev. Charles R. Lizenby, pastor, Morning, "The Light of the World," 10 a. m.; Evening, "The Structural Plan of Life," 7:30 p. m.
South—The Rev. H. A. Sherwood, pastor, Morning, "The Light of the World," 10 a. m.; Evening, "The Structural Plan of Life," 7:30 p. m.	South—The Rev. H. A. Sherwood, pastor, Morning, "The Light of the World," 10 a. m.; Evening, "The Structural Plan of Life," 7:30 p. m.	Speedway Boulevard—The Rev. Stanley Rolston, pastor, Morning, "The Light of the World," 10 a. m.; Evening, "The Structural Plan of Life," 7:30 p. m.
West—The Rev. H. A. Sherwood, pastor, Morning, "The Light of the World," 10 a. m.; Evening, "The Structural Plan of Life," 7:30 p. m.	West—The Rev. H. A. Sherwood, pastor, Morning, "The Light of the World," 10 a. m.; Evening, "The Structural Plan of Life," 7:30 p. m.	East Park—The Rev. Golden A. Smith, pastor, Morning, "The Light of the World," 10 a. m.; Evening, "The Structural Plan of Life," 7:30 p. m.
Central—The Rev. W. A. Shullenger, pastor, Morning, "The Light of the World," 10 a. m.; Evening, "The Structural Plan of Life," 7:30 p. m.	Central—The Rev. W. A. Shullenger, pastor, Morning, "The Light of the World," 10 a. m.; Evening, "The Structural Plan of Life," 7:30 p. m.	West—The Rev. H. A. Sherwood, pastor, Morning, "The Light of the World," 10 a. m.; Evening, "The Structural Plan of Life," 7:30 p. m.
St. George—The Rev. Francis T. Smith, pastor, Morning, "The Light of the World," 10 a. m.; Evening, "The Structural Plan of Life," 7:30 p. m.	St. George—The Rev. Francis T. Smith, pastor, Morning, "The Light of the World," 10 a. m.; Evening, "The Structural Plan of Life," 7:30 p. m.	West—The Rev. H. A. Sherwood, pastor, Morning, "The Light of the World," 10 a. m.; Evening, "The Structural Plan of Life," 7:30 p. m.
Advent—The Rev. George S. Southworth, pastor, Morning, "The Light of the World," 10 a. m.; Evening, "The Structural Plan of Life," 7:30 p. m.	Advent—The Rev. George S. Southworth, pastor, Morning, "The Light of the World," 10 a. m.; Evening, "The Structural Plan of Life," 7:30 p. m.	West—The Rev. H. A. Sherwood, pastor, Morning, "The Light of the World," 10 a. m.; Evening, "The Structural Plan of Life," 7:30 p. m.
Christ—The Rev. E. A. Anger Powell, pastor, Morning, "The Light of the World," 10 a. m.; Evening, "The Structural Plan of Life," 7:30 p. m.	Christ—The Rev. E. A. Anger Powell, pastor, Morning, "The Light of the World," 10 a. m.; Evening, "The Structural Plan of Life," 7:30 p. m.	West—The Rev. H. A. Sherwood, pastor, Morning, "The Light of the World," 10 a. m.; Evening, "The Structural Plan of Life," 7:30 p. m.
St. Paul—The Rev. William Burrows, pastor, Morning, "The Light of the World," 10 a. m.; Evening, "The Structural Plan of Life," 7:30 p. m.	St. Paul—The Rev. William Burrows, pastor, Morning, "The Light of the World," 10 a. m.; Evening, "The Structural Plan of Life," 7:30 p. m.	West—The Rev. H. A. Sherwood, pastor, Morning, "The Light of the World," 10 a. m.; Evening, "The Structural Plan of Life," 7:30 p. m.
All Saints—The Rev. Robert C. Alexander, pastor, Morning, "The Light of the World," 10 a. m.; Evening, "The Structural Plan of Life," 7:30 p. m.	All Saints—The Rev. Robert C. Alexander, pastor, Morning, "The Light of the World," 10 a. m.; Evening, "The Structural Plan of Life," 7:30 p. m.	West—The Rev. H. A. Sherwood, pastor, Morning, "The Light of the World," 10 a. m.; Evening, "The Structural Plan of Life," 7:30 p. m.

## RAIL MEN'S CLASS SPONSORS SUPPER

The Railway Men's Bible Class of the East Park M. E. Church is to entertain members and friends at an oyster supper Monday night at Cannon Ball Baker, famous cross country automobile speed driver, is to speak.

## DATE IS CHANGED

Date of the joint concert of the Indianapolis Civic and Martinsville Community Choirs in the Martinsville High School auditorium has been changed to Wednesday, Dec. 8, Floyd Jones, director of the local group, announced today. The date previously set was Dec. 1. They will join in singing a program of sacred songs.

## RELIGIOUS REMARKABLES

By R. O. BERG AND E. W. PHILLIPS

## PRESBYTERIAN

Seventh—The Rev. Harold W. Turpin, pastor, Morning, "The Adequate Leadership," 10 a. m.; Evening, "The Adequate Leadership," 7:30 p. m.

## UNITARIAN

All Saints—The Rev. P. S. C. Wick, pastor, Morning, "The Adequate Leadership," 10 a. m.; Evening, "The Adequate Leadership," 7:30 p. m.

## CLASS WILL HEAR BAPTIST MINISTER

Members of the 101 Men's Bible Class of Broadway Baptist Church tomorrow are to hear the Rev. R. M. Dodrill, pastor, speak on "Christian's Fruitfulness."

Class attendance of 336 has set a new record and for the entire Sunday School, 1239, also is a new mark. Two buses are available to persons unable to reach the church by other means.

## JENNINGS TO ATTEND CHICAGO WPA PARLEY

### Airport Improvement Work Nears Completion.

John K. Jennings, Indiana Administrator, will attend a conference of WPA regional officials Friday in Chicago to discuss the agency's program for the rest of the fiscal year ending on June 30, 1938.

Subjects to be discussed at the conference include future WPA employment needs, the number of employable unemployed in Indiana; employment trend in industry and project planning.

Meanwhile, the WPA program at Municipal Airport here was nearing completion. A total of 1300 feet has been added to the northwest-southeast runway, giving it a total length of 2500 feet. It is 102 feet wide.

A 200-foot east-west runway has been built, and a southwest-northeast runway extended to 3200 feet.

## THREE STATE CASES SCHEDULED BY NLRB

Hearings of charges against three companies cited by the National Labor Relations Board are scheduled within the next two weeks.

Robert H. Cowdell, regional director, announced today.

## SHEPARD'S LODGE TO NAME OFFICERS

Nomination of officers is scheduled for the business meeting of Faith Lodge 1, United Shepherds' Association, at 7:45 p. m. Tuesday at 24 E. Ohio St.

William D. Goode, supreme president; Hyatt G. Johnson, supreme secretary-treasurer, and other supreme officers are to conduct a class of candidates in receiving the obligation. A social hour to follow is in charge of the Shepherds' degree team circle.

## 2 RECOVERING FROM AIR CRASH INJURIES

RICHMOND, Nov. 27 (U. P.)—Bob McDaniel, 24, Muncie, and Harry Proctor, 17, Richmond, were recovering in Reid Hospital here today from injuries received last yesterday when their two-seated cabin monoplane went into a spin and crashed at the Richmond Airport.

Mr. McDaniel received back injuries and Mr. Proctor suffered a fractured ankle.

## COMES HOME AFTER 36 YEARS' ABSENCE

WINAMAC, Nov. 27.—William Pugh, 55-year-old, has been reunited with his family here after a 36-year absence. At the age of 19 Pugh set out to make his fortune. His whereabouts had been unknown until his brother, Arthur Pugh, located him in California recently.

## INSURANCE MAN TO TALK

"The Balanced Underwriter" is to be discussed by Lynn S. Broadbent, Chicago life insurance executive, before the Indianapolis Association of Life Underwriters at a luncheon in the Claypool Hotel Thursday.

Mr. Broadbent formerly was a general agent here.

## ANY KIND OF FOUNTAIN PEN REPAIRS AT HAAG'S CLAYPOOL DRUG STORE

## TWO FIRST AID CLASSES OPEN AT RED CROSS

### Accident Prevention Also Is Stressed in Courses Begun Here.

Opening of two new classes in first aid and accident prevention was announced today by the Indianapolis chapter of the American Red Cross.

The beginners' course is to begin Tuesday, at 7:30 p. m., and will meet regularly at the same time throughout the instruction period. The advanced group is to meet on Wednesday at 7:30 p. m. and thereafter at the same time.

Both courses are to be under the instruction of Ivan S. Gildewell, director of First Aid and Accident Prevention for the local chapter. Classes are to be held in headquarters, at 320 N. Meridian St.

## Red Cross Membership Increase Possible

Possibility that the Indianapolis Red Cross chapter membership may be increased from 27,000 to 30,000 today was expressed by leaders of the present Roll Call drive.

The workers said they were encouraged during the last two weeks because more than 90 per cent of the institutions reporting completion of the campaign among their employees had revealed gains.

Companies reporting enrollment yesterday were: Polk Milk Co., 159; Farm Security Corp., 118; Hotel Lincoln, 40; American Bearing Corp., 13; Acme Evans Co., 151; Peoples State Bank, 16; Madison State Bank, 6; Marion County State Bank, 16; American National Bank, 55; and Indiana Trust Co., 23.

## U. A. W. Head



Homer Martin (above), International United Auto Workers of America president, is to be the principal speaker at a mass meeting at 3 p. m. Sunday at 241 W. Maryland St.

Auto plant workers from all parts of Indiana are expected to attend, according to Russell J. Merrill, regional director. Following Mr. Martin's address, regional directors and organizers are to hold executive meetings.

Mr. Martin, formerly a Baptist Church minister, was first elected international president in 1936 and was re-elected last summer.

## SETS NEW HIGH

### Mounting Living Cost Is Cause; Aged Average Grants of \$15.86.

Grants to the aged, to the needy blind and to dependent children reached a record high during October, Thurman A. Gotschalk, State Welfare Administrator, announced today.

A total of \$994,747 was distributed to the three classes, the highest of any month since the inception of the program in 1929.

Mounting cost of living, liberalizing of requirements and proof of additional needs resulted in increased allowances for the needy, Mr. Gotschalk said.

Statistics show 41,239 aged citizens received \$654,199 during October, an average of \$15.86 per person. The average grant, a year ago, was \$13.77.

Children Get \$11 Each

Last month 23,551 dependent children under 16 received \$301,587, an average of \$12.81 per case. Average grants, during October, 1936, were \$11.09.

The 2118 needy blind persons received \$33,961 during October, an average of \$15.84 against \$18.07 a year ago.

## EX-JUDGE TO SPEAK ON TOWNSEND PLAN

Judge M. C. Summers of LaVerne, Cal., Townsend plan advocate, is to be guest speaker at an open meeting Sunday at 2 p. m. in Castle Hall, E. S. McCurdy, chairman, announced today.

Judge Summers, a native Hoosier, was born in Walkerton and educated in Indiana schools. After resignation from the Court of General Sessions in St. Louis, the jurist devoted his time to study of taxation and promotion of the dry cause. Recently he joined the Townsend movement. His talk here will deal with the present tax problem.

## FAIRBANKS-MORSE TO SHOW PRODUCTS

Approximately 400 dealers will be guests of the Capitol Paper Co., 225 W. South St., exhibitors, during the preview of the new 1938 line of Fairbanks-Morse refrigerators, which will be held in the distributor's showrooms Monday and Tuesday, according to A. L. Simon, sales manager.

The preview will be in charge of I. F. Kahn, president, and F. C. Kahn, secretary-treasurer of the Capitol Paper Co.

## HUNTINGTON MAN TAKES BANK OFFICE

Earl C. Bucher, Huntington Building & Loan Association secretary, Huntington, was to assume his duties today on the Federal Home Loan Bank of Indianapolis board of directors.

Mark L. Dickover, Valparaiso, and William C. Walz, Ann Arbor, Mich., were re-elected to the board.

Mr. Bucher formerly was superintendent of building and loans in the State Department of Financial Institutions.

## MISSIONARY SEES JAPANESE VICTORY

Japan is waging a war to gain additional territory for her overpopulation and eventually will win it if an incident does not involve her, said Dr. Rebecca Parrish, missionary, club members of the Exchange Club yesterday.

## CHRISTIAN SCIENCE CHURCHES

Branches of The Mother Church, The First Church of Christ, Scientist, Boston, Mass.

Lesson Sermon for Sunday, Nov. 28, "Ancient and Modern Nearness, Denounced."

Sunday Morning Service 11 A. M.

## FIRST CHURCH—Meridian at 20th St.

## SECOND CHURCH—Delaware at 12th St.

## THIRD CHURCH—Wash. Blvd. at 34th St.

## FOURTH CHURCH—Pleasant Run Parkway (S. Drive) at Butler Ave.

## FIFTH CHURCH—College at 63d St.

Sunday School, All Churches Reading Rooms Are Open to the Public