

# 'Smart Ales' and 'Show Offs' Blamed for Traffic Problems

KANSAS CITY, Mo., Oct. 14 (U. P.).—The National Safety Congress is exploring the automobile driver's mind, where most of the wrecks originate.

Alan Canty of Detroit yesterday classified "problem" drivers, into these groups:

- The so-called "smart alec."
- The "show-off."
- The selfish driver who has no regard for the rights of others.
- The horn blower who laughs at speed laws.

"What can we do about it?" Mr. Canty asked. He replied: "We must change our concept of the problem. Sociologists have learned that there are definite delinquency areas in urban centers and have focused attention upon the environment as causative factors."

"We should give more attention to the youthful individual. Most of us are concerned with drivers who are violators. We appear at the scene after the trouble has occurred and try to find out why. We are not attacking the problem at its source."

**Ticket 'Fixing' Second**

He suggested a co-operative educational campaign by social agencies to train the potential drivers.

Judge Lee E. Skeel, Cleveland Safety Council president, said the practice of "ticket fixing" was the greatest menace to traffic law enforcement.

"The most injurious thing about this abominable practice is not so much the fact that it breaks down the law enforcing agencies, but rather that many people, knowing they can without question evade the consequences of the misconduct, acquire an artificial feeling of being superior to the law."

He said that sporadic community safety campaigns or "police drives," usually over stress one phase of the traffic problem and neglect all others, whereas a balanced program was needed.

# DEMAND PROBE OF NAZI GROUPS

College Presidents Join in Petition to Massachusetts Commission.

BOSTON, Oct. 14 (U. P.).—Three college presidents, 30 professors and teachers and 21 ministers were among 60 persons who today assailed procedure of the Special Legislative Commission inquiring into radical activities in Massachusetts.

Fear that the investigation of communist activities might consume so much of allotted funds that investigation of "more immediately alarming Fascist and Nazi activities will be cut short" was expressed in the group's statement.

"When the threat to American democracy is considered," it said, "surely Fascism and Nazism seem more immediately alarming than does any Communist activity which has so far come to light."

"Much time seems to have been wasted in inquiring into the Com-

munist witnesses' personal religious or ethical opinions, freedom in all of which is clearly guaranteed by our Constitution. This kind of inquiry elicits from witnesses no information whatever concerning actual subversive activities."

"It is of greatest importance that Nazi and Fascist groups in this state be brought squarely into the open . . ."

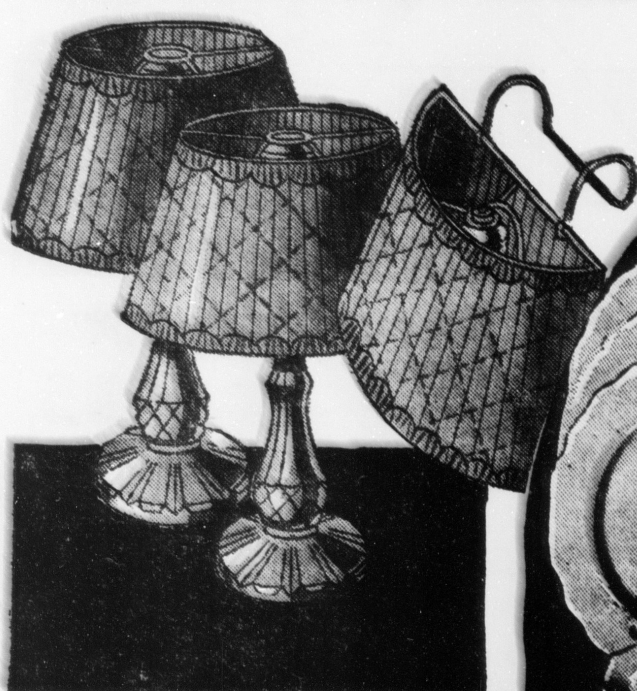
Signers included President Daniel L. Marsh of Boston University, President Karl T. Compton of Massachusetts Institute of Technology, and President Everett C. Herick of Andover-Newton Theological School.

# STATE REVENUE UP 10 MILLION IN 1937

Internal revenue collections in Indiana for the first quarter of the fiscal year showed an increase of \$10,845,625 over the corresponding period last year, it was announced by the collection office today.

Total for the July, August and September last year was \$18,100,350.90, as compared with \$28,945,852 for the same quarter in 1937. About \$2,800,000 of the gain is due to the Social Security tax which was not levied last year, but large increases were shown in the individual income tax and the distilled spirits tax.

# 23<sup>rd</sup> ANNIVERSARY SALE



**3-Pc. Boudoir LAMP SET**  
CONSISTS of one bed lamp with shade and two vanity lamps to match. Sets may be selected in white, green, pink or amber. A "Champion Value."

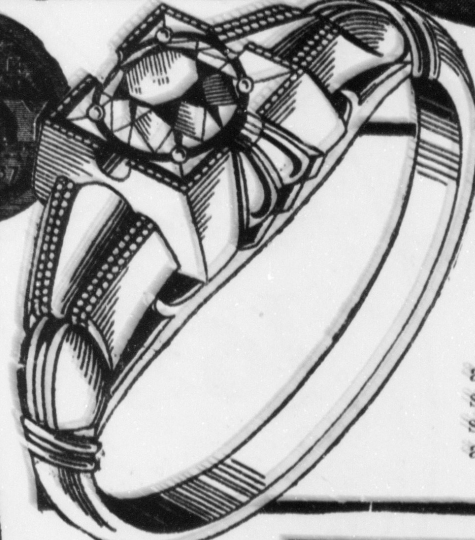
**\$2<sup>63</sup>**  
23c DOWN



**32-Piece Dinnerware Service for Six**  
NOT our usual first quality, but an exceptional value in dinner ware! Attractively decorated with a beautiful floral design.

**\$2<sup>83</sup>**  
23c DOWN

**23 MONTHS TO PAY**



**The "Junior Miss"**  
Large Solitaire Diamond

BEAUTIFUL new design of solid natural gold. Large fine quality solitaire diamond. An outstanding "Champion Value" at this price.

**\$9<sup>23</sup>**  
23c DOWN  
23 MONTHS TO PAY



**Engraved BRIDAL PAIR**

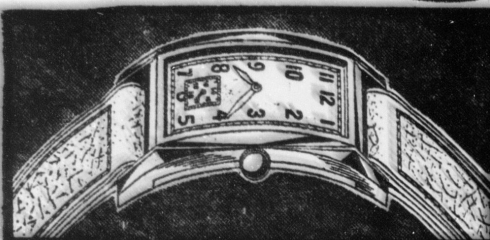
**\$17<sup>23</sup>**  
BEAUTIFUL engraved wedding rings with matched engagement ring. Solid gold. 23c DOWN



**3-Diamond Wedding Ring**

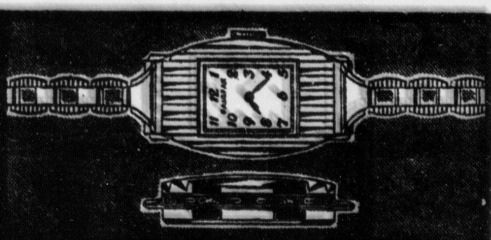
**\$9<sup>23</sup>**  
MODERN design with three brilliant-cut diamonds. Fashioned of solid natural gold. 23c Down—23 Months to Pay

**KAY'S CHAMPION WATCH VALUES!**



**Man's Curved Fairfax**  
HANDSOME new streamlined model. Curved to fit the wrist. Priced with fine quality platin strap. A "Champion Value."

**\$17<sup>23</sup>**  
23c DOWN—23 MONTHS TO PAY



**Ladies' Dainty Fairfax**  
BEAUTIFUL new ladies' model shown for the first time during this sale. Priced right to the minute. Fine reliable movement. A "Champion Value."

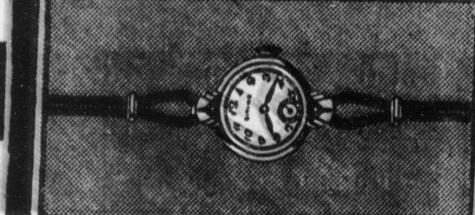
**\$8<sup>23</sup>**  
23c DOWN—23 MONTHS TO PAY



**Bulova "Minute Man"**  
HERE is Bulova's Very latest model. Fine accurate 17-jewel movement in a curved case in the charm and color of natural gold.

**\$33<sup>75</sup>**  
23c DOWN—23 MONTHS TO PAY

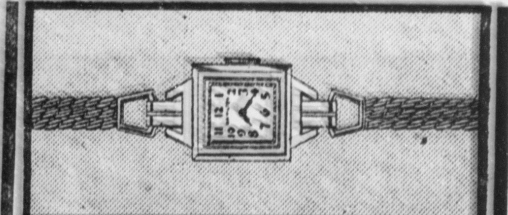
**BUY NOW for Christmas**



**2-Diamond Fairfax**

SMARTLY designed and built for accuracy. The dainty round watch has fine jeweled movement. Set with two genuine diamonds.

**\$16<sup>23</sup>**  
23c DOWN—23 MONTHS TO PAY

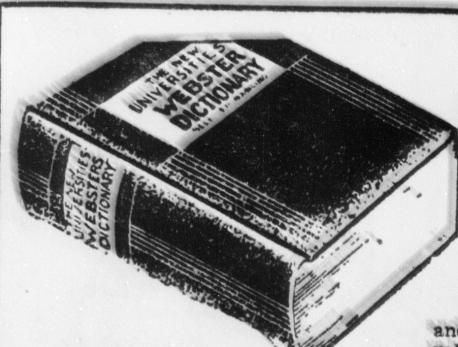


**Hamilton "Martha"**

DAINTY new model by the world's makers of fine watches. 14-carat gold filled case and 17-jewel movement. A "Champion Value."

**\$50**  
23c DOWN—23 MONTHS TO PAY

**Lay Away a Gift Today**



**New 1937 DICTIONARY**  
**43c**

USEFUL in the home, the office or at school. 800 pages completely and accurately edited. An outstanding value in Kay's Anniversary Sale.



**3-Diamond Dinner Ring**

A MOST attractive dinner ring of real grace and beauty. Looks much more expensive. Every diamond is of triple-tested quality. A "Champion Value."

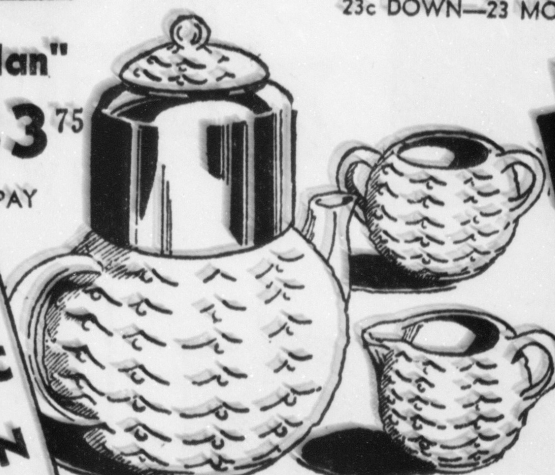
**\$16<sup>23</sup>**  
23c DOWN—23 MONTHS TO PAY



**MAN'S BIRTHSTONE**

A HANDSOMELY carved solid gold mounting set with your choice of birthstones.

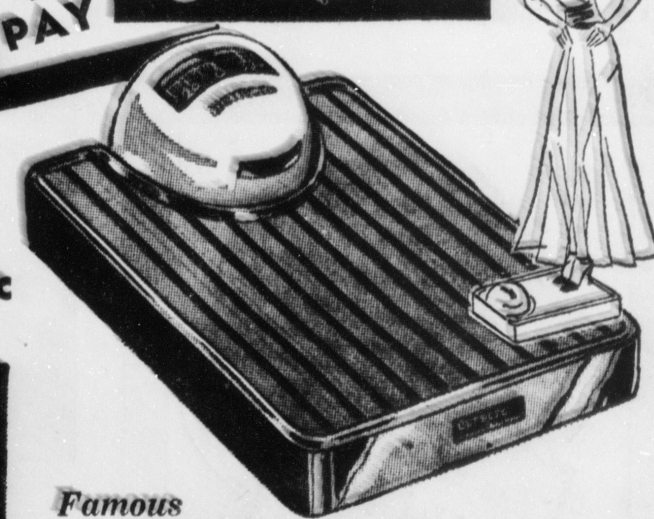
**\$8<sup>23</sup>**  
23c DOWN



**Dripolator, Sugar, Creamer**

LARGE size drip coffee-maker with sugar and creamer to match. Popular "Wave and Dot" design.

**77c**



**Famous Defecto Scales**

**\$2<sup>93</sup>**  
THE famous Defecto scales at an unheard of price. Chromium trimming. Weighs up to 300 lbs. Accurate, attractive and sturdy. A "Champion Value."

23c DOWN

**KAY JEWELRY COMPANY**  
137 W. Washinton St.

**23c DOWN 23 MONTHS to pay**