

## 51 DETOURS ON STATE HIGHWAYS STILL IN EFFECT

Nine Removed, 11 Added to List During Past Seven Days.

Fifty-one detours still are in effect on Indiana highways, the State Highway Department announced today. Nine were lifted last week and 11 additional sections closed to traffic.

Detours are marked over city streets as follows:

Indiana 2—From Gosport, Indiana 34 in Huntington; U. S. 24 in Huntington, and Indiana 67 in Richmond. Bridge run-arounds, etc., traffic maintained, drive carefully.

Indiana 16—Near Wapreons, Indiana 26, just west of Junction Road 2, Indiana 18, county gravel and oil mat.

Indiana 2—North of Hebron, 3 miles over county gravel road. Indiana 3—Near Westport, 1/2 miles over county gravel road.

Indiana 8—East of Avilla, 6 1/2 miles over county gravel. Indiana 9—North of Alexandria, 2 1/2 miles over county gravel. From Indiana 218 to Huntington, 18 1/2 miles over Road 218 and 221.

Indiana 13—From Millersburg to Indiana 2, over county brick and Indiana 2. Indiana 15—From Marion, north, 12 1/2 miles over Road 105, 12 miles over Road 13 and 16. Indiana 16—Between Indiana 13 and Indiana 105, 8 miles over county gravel. Indiana 22—From Union to Hartford city about 8 miles over county gravel road.

Indiana 26—From Rossview west, 3 1/2 miles over Indiana 39 and county gravel. From Middlefork to U. S. 31, 24 miles over Road 26, 13 and 31. From about 7 miles east of Hartford City, east 3 miles over county gravel.

U. S. 31—From Deerfield to Portland, 25 miles over Road 28 and 30. Indiana 32—Just south of Knox, 5 miles over county gravel road.

U. S. 30—At Lake-Potter County line, 1/2 mile over county concrete and stone. U. S. 31—South of Columbus, 3 miles over county gravel and Indiana 34. From Peru north, trucks detour over Road 24 and 25, passenger cars 14 1/2 miles over Roads 19 and 18.

Indiana 33—From Muncie east, 5 1/2 miles over city streets and county oil mat. Indiana 33—From Mauckport to just west of Laconia, 9 miles over Indiana 36 and county gravel road.

Indiana 34—From just east of Hillsboro to Warricktown, 10 1/2 miles over county gravel and Indiana 25. U. S. 35—Just north of Richmond, 2 miles over city streets and county gravel. From Road 3 and 22, just south of Knox, 5 miles over county gravel road.

U. S. 36—From Mt. Summit to U. S. 35, about 12 miles over county gravel. U. S. 36—From Mannington through Greensburg to just west of Sullivan, 18 miles over county oil mat and concrete.

Detour From State Road 44 Indiana 44—West of Franklin, 12 miles over Road 123 and 144. West of Shelbyville, 9 miles over county gravel and pavement. From Road 22, 244 and 3. From Roadville east, 12 miles over U. S. 32 county gravel and oil mat. From Glenwood to Connersville, 16 miles over county gravel road.

Indiana 46—Just west of Bowling Green, about 1 mile over county gravel. Just east of Bloomington, 7 miles over county gravel.

U. S. 50—Just west of Brownstown, 2 miles over county gravel. From Junction Roads 1 and 5 to Aurora, 20 miles over Roads 1 and 350.

Indiana 56—From Salem to Scottsburg, 20 miles over narrow gravel and U. S. 31. From Dover to Southgate, 17 miles over Indiana 46 and county gravel.

Indiana 58—From Indiana 54 to Jasonville, over county gravel. Indiana 62—From Indiana 66 at Leavenworth to Corydon, 37 miles over Road 64 and 132. From Jeffersonville to Indiana 58, 41 miles over 31-52, 403 and 358.

Indiana 68—From Corydon north, 4 miles over Indiana 68 and county gravel. Indiana 109—From Columbia, City to Wolf Lake, 13 miles over Road 5 and 2. Indiana 114—From Indiana 43 east, detour over county gravel.

Indiana 161—From Indiana 62 south, 10 miles over Road 62 and county gravel. Indiana 167—From Albany to Dunkirk, over county gravel.

Indiana 221—From just north of Indiana 22, north 3 miles over county road. U. S. 224—From Junction Indiana 5 to Huntington, 2 miles over county gravel and city streets.

Indiana 627—Just north of Richmond, 2 miles over city streets and county gravel. Indiana 627—Just north of Richmond, 2 miles over city streets and county gravel.

Indiana 627—Just north of Richmond, 2 miles over city streets and county gravel. Indiana 627—Just north of Richmond, 2 miles over city streets and county gravel.

Indiana 627—Just north of Richmond, 2 miles over city streets and county gravel. Indiana 627—Just north of Richmond, 2 miles over city streets and county gravel.

Indiana 627—Just north of Richmond, 2 miles over city streets and county gravel. Indiana 627—Just north of Richmond, 2 miles over city streets and county gravel.

Indiana 627—Just north of Richmond, 2 miles over city streets and county gravel. Indiana 627—Just north of Richmond, 2 miles over city streets and county gravel.

Indiana 627—Just north of Richmond, 2 miles over city streets and county gravel. Indiana 627—Just north of Richmond, 2 miles over city streets and county gravel.

Indiana 627—Just north of Richmond, 2 miles over city streets and county gravel. Indiana 627—Just north of Richmond, 2 miles over city streets and county gravel.

Indiana 627—Just north of Richmond, 2 miles over city streets and county gravel. Indiana 627—Just north of Richmond, 2 miles over city streets and county gravel.

Indiana 627—Just north of Richmond, 2 miles over city streets and county gravel. Indiana 627—Just north of Richmond, 2 miles over city streets and county gravel.

U. S. 30—At Lake-Potter County line, 1/2 mile over county concrete and stone. U. S. 31—South of Columbus, 3 miles over county gravel and Indiana 34. From Peru north, trucks detour over Road 24 and 25, passenger cars 14 1/2 miles over Roads 19 and 18.

Indiana 33—From Muncie east, 5 1/2 miles over city streets and county oil mat. Indiana 33—From Mauckport to just west of Laconia, 9 miles over Indiana 36 and county gravel road.

Indiana 34—From just east of Hillsboro to Warricktown, 10 1/2 miles over county gravel and Indiana 25. U. S. 35—Just north of Richmond, 2 miles over city streets and county gravel. From Road 3 and 22, just south of Knox, 5 miles over county gravel road.

U. S. 36—From Mt. Summit to U. S. 35, about 12 miles over county gravel. U. S. 36—From Mannington through Greensburg to just west of Sullivan, 18 miles over county oil mat and concrete.

Detour From State Road 44 Indiana 44—West of Franklin, 12 miles over Road 123 and 144. West of Shelbyville, 9 miles over county gravel and pavement. From Road 22, 244 and 3. From Roadville east, 12 miles over U. S. 32 county gravel and oil mat. From Glenwood to Connersville, 16 miles over county gravel road.

Indiana 46—Just west of Bowling Green, about 1 mile over county gravel. Just east of Bloomington, 7 miles over county gravel.

U. S. 50—Just west of Brownstown, 2 miles over county gravel. From Junction Roads 1 and 5 to Aurora, 20 miles over Roads 1 and 350.

Indiana 56—From Salem to Scottsburg, 20 miles over narrow gravel and U. S. 31. From Dover to Southgate, 17 miles over Indiana 46 and county gravel.

Indiana 58—From Indiana 54 to Jasonville, over county gravel. Indiana 62—From Indiana 66 at Leavenworth to Corydon, 37 miles over Road 64 and 132. From Jeffersonville to Indiana 58, 41 miles over 31-52, 403 and 358.

Indiana 68—From Corydon north, 4 miles over Indiana 68 and county gravel. Indiana 109—From Columbia, City to Wolf Lake, 13 miles over Road 5 and 2. Indiana 114—From Indiana 43 east, detour over county gravel.

Indiana 161—From Indiana 62 south, 10 miles over Road 62 and county gravel. Indiana 167—From Albany to Dunkirk, over county gravel.

Indiana 221—From just north of Indiana 22, north 3 miles over county road. U. S. 224—From Junction Indiana 5 to Huntington, 2 miles over county gravel and city streets.

Indiana 627—Just north of Richmond, 2 miles over city streets and county gravel. Indiana 627—Just north of Richmond, 2 miles over city streets and county gravel.

Indiana 627—Just north of Richmond, 2 miles over city streets and county gravel. Indiana 627—Just north of Richmond, 2 miles over city streets and county gravel.

Indiana 627—Just north of Richmond, 2 miles over city streets and county gravel. Indiana 627—Just north of Richmond, 2 miles over city streets and county gravel.

Indiana 627—Just north of Richmond, 2 miles over city streets and county gravel. Indiana 627—Just north of Richmond, 2 miles over city streets and county gravel.

Indiana 627—Just north of Richmond, 2 miles over city streets and county gravel. Indiana 627—Just north of Richmond, 2 miles over city streets and county gravel.

Indiana 627—Just north of Richmond, 2 miles over city streets and county gravel. Indiana 627—Just north of Richmond, 2 miles over city streets and county gravel.

Indiana 627—Just north of Richmond, 2 miles over city streets and county gravel. Indiana 627—Just north of Richmond, 2 miles over city streets and county gravel.

Indiana 627—Just north of Richmond, 2 miles over city streets and county gravel. Indiana 627—Just north of Richmond, 2 miles over city streets and county gravel.

Indiana 627—Just north of Richmond, 2 miles over city streets and county gravel. Indiana 627—Just north of Richmond, 2 miles over city streets and county gravel.

Indiana 627—Just north of Richmond, 2 miles over city streets and county gravel. Indiana 627—Just north of Richmond, 2 miles over city streets and county gravel.

Indiana 627—Just north of Richmond, 2 miles over city streets and county gravel. Indiana 627—Just north of Richmond, 2 miles over city streets and county gravel.

Indiana 627—Just north of Richmond, 2 miles over city streets and county gravel. Indiana 627—Just north of Richmond, 2 miles over city streets and county gravel.

Indiana 627—Just north of Richmond, 2 miles over city streets and county gravel. Indiana 627—Just north of Richmond, 2 miles over city streets and county gravel.

Indiana 627—Just north of Richmond, 2 miles over city streets and county gravel. Indiana 627—Just north of Richmond, 2 miles over city streets and county gravel.

Indiana 627—Just north of Richmond, 2 miles over city streets and county gravel. Indiana 627—Just north of Richmond, 2 miles over city streets and county gravel.

Indiana 627—Just north of Richmond, 2 miles over city streets and county gravel. Indiana 627—Just north of Richmond, 2 miles over city streets and county gravel.

Indiana 627—Just north of Richmond, 2 miles over city streets and county gravel. Indiana 627—Just north of Richmond, 2 miles over city streets and county gravel.

Indiana 627—Just north of Richmond, 2 miles over city streets and county gravel. Indiana 627—Just north of Richmond, 2 miles over city streets and county gravel.

Indiana 627—Just north of Richmond, 2 miles over city streets and county gravel. Indiana 627—Just north of Richmond, 2 miles over city streets and county gravel.

Indiana 627—Just north of Richmond, 2 miles over city streets and county gravel. Indiana 627—Just north of Richmond, 2 miles over city streets and county gravel.

U. S. 30—At Lake-Potter County line, 1/2 mile over county concrete and stone. U. S. 31—South of Columbus, 3 miles over county gravel and Indiana 34. From Peru north, trucks detour over Road 24 and 25, passenger cars 14 1/2 miles over Roads 19 and 18.

Indiana 33—From Muncie east, 5 1/2 miles over city streets and county oil mat. Indiana 33—From Mauckport to just west of Laconia, 9 miles over Indiana 36 and county gravel road.

Indiana 34—From just east of Hillsboro to Warricktown, 10 1/2 miles over county gravel and Indiana 25. U. S. 35—Just north of Richmond, 2 miles over city streets and county gravel. From Road 3 and 22, just south of Knox, 5 miles over county gravel road.

U. S. 36—From Mt. Summit to U. S. 35, about 12 miles over county gravel. U. S. 36—From Mannington through Greensburg to just west of Sullivan, 18 miles over county oil mat and concrete.

Detour From State Road 44 Indiana 44—West of Franklin, 12 miles over Road 123 and 144. West of Shelbyville, 9 miles over county gravel and pavement. From Road 22, 244 and 3. From Roadville east, 12 miles over U. S. 32 county gravel and oil mat. From Glenwood to Connersville, 16 miles over county gravel road.

Indiana 46—Just west of Bowling Green, about 1 mile over county gravel. Just east of Bloomington, 7 miles over county gravel.

U. S. 50—Just west of Brownstown, 2 miles over county gravel. From Junction Roads 1 and 5 to Aurora, 20 miles over Roads 1 and 350.

Indiana 56—From Salem to Scottsburg, 20 miles over narrow gravel and U. S. 31. From Dover to Southgate, 17 miles over Indiana 46 and county gravel.

Indiana 58—From Indiana 54 to Jasonville, over county gravel. Indiana 62—From Indiana 66 at Leavenworth to Corydon, 37 miles over Road 64 and 132. From Jeffersonville to Indiana 58, 41 miles over 31-52, 403 and 358.

Indiana 68—From Corydon north, 4 miles over Indiana 68 and county gravel. Indiana 109—From Columbia, City to Wolf Lake, 13 miles over Road 5 and 2. Indiana 114—From Indiana 43 east, detour over county gravel.

Indiana 161—From Indiana 62 south, 10 miles over Road 62 and county gravel. Indiana 167—From Albany to Dunkirk, over county gravel.

Indiana 221—From just north of Indiana 22, north 3 miles over county road. U. S. 224—From Junction Indiana 5 to Huntington, 2 miles over county gravel and city streets.

Indiana 627—Just north of Richmond, 2 miles over city streets and county gravel. Indiana 627—Just north of Richmond, 2 miles over city streets and county gravel.

Indiana 627—Just north of Richmond, 2 miles over city streets and county gravel. Indiana 627—Just north of Richmond, 2 miles over city streets and county gravel.

Indiana 627—Just north of Richmond, 2 miles over city streets and county gravel. Indiana 627—Just north of Richmond, 2 miles over city streets and county gravel.

Indiana 627—Just north of Richmond, 2 miles over city streets and county gravel. Indiana 627—Just north of Richmond, 2 miles over city streets and county gravel.

Indiana 627—Just north of Richmond, 2 miles over city streets and county gravel. Indiana 627—Just north of Richmond, 2 miles over city streets and county gravel.

Indiana 627—Just north of Richmond, 2 miles over city streets and county gravel. Indiana 627—Just north of Richmond, 2 miles over city streets and county gravel.

Indiana 627—Just north of Richmond, 2 miles over city streets and county gravel. Indiana 627—Just north of Richmond, 2 miles over city streets and county gravel.

Indiana 627—Just north of Richmond, 2 miles over city streets and county gravel. Indiana 627—Just north of Richmond, 2 miles over city streets and county gravel.

Indiana 627—Just north of Richmond, 2 miles over city streets and county gravel. Indiana 627—Just north of Richmond, 2 miles over city streets and county gravel.

Indiana 627—Just north of Richmond, 2 miles over city streets and county gravel. Indiana 627—Just north of Richmond, 2 miles over city streets and county gravel.

Indiana 627—Just north of Richmond, 2 miles over city streets and county gravel. Indiana 627—Just north of Richmond, 2 miles over city streets and county gravel.

Indiana 627—Just north of Richmond, 2 miles over city streets and county gravel. Indiana 627—Just north of Richmond, 2 miles over city streets and county gravel.

Indiana 627—Just north of Richmond, 2 miles over city streets and county gravel. Indiana 627—Just north of Richmond, 2 miles over city streets and county gravel.

Indiana 627—Just north of Richmond, 2 miles over city streets and county gravel. Indiana 627—Just north of Richmond, 2 miles over city streets and county gravel.

Indiana 627—Just north of Richmond, 2 miles over city streets and county gravel. Indiana 627—Just north of Richmond, 2 miles over city streets and county gravel.

Indiana 627—Just north of Richmond, 2 miles over city streets and county gravel. Indiana 627—Just north of Richmond, 2 miles over city streets and county gravel.

Indiana 627—Just north of Richmond, 2 miles over city streets and county gravel. Indiana 627—Just north of Richmond, 2 miles over city streets and county gravel.

Indiana 627—Just north of Richmond, 2 miles over city streets and county gravel. Indiana 627—Just north of Richmond, 2 miles over city streets and county gravel.

Indiana 627—Just north of Richmond, 2 miles over city streets and county gravel. Indiana 627—Just north of Richmond, 2 miles over city streets and county gravel.

Indiana 627—Just north of Richmond, 2 miles over city streets and county gravel. Indiana 627—Just north of Richmond, 2 miles over city streets and county gravel.

DAILY STORE HOURS 9:30 A. M. TO 5:30 P. M.

# Block's Downstairs Store

The Scotch Were Generous With the Color in These

## CAMPUS COATS

Warm, Cozy Woolens, Sizes 7 to 16 Years!

\$5.95

As warm as an open fire . . . and just as colorful! Tailored with 2-patch pockets, full belt, pleated back and double-breasted front! Warmly lined! Choose from our variety of plaids!

Girls' All Wool Skirts \$1.98

Plaids and plain colors in kick pleat, button-down - the front, and ballerina models. Sizes 3 to 6, 7 to 14.

Girls' Cotton School Blouses \$1.00

Slub cloths, broadcloths, prints and acetates in smartly trimmed tuck-in and overblouse models. Sizes 7 to 14.

Calot Hats . . . 79c

ESCALATORS to the Wide Aisles in Block's Air-Conditioned Downstairs Store.



Here's a Big Opportunity to Save on Smart 1937

## School COATS

\$5.98

Sizes 3 to 6  
Sizes 7 to 14

These coats are selling fast . . . for they're exceptional values at \$5.98! Warm, well tailored basquette weaves and tweed fabrics . . . nicely lined for extra warmth . . . and with beaverette (coney) fur trims USE OUR LAY-AWAY PLAN AND BUY NOW!

ESCALATORS to the Wide Aisles in Block's Air-Conditioned Downstairs Store.



Original \$1.98 Quality

## ACETATE DRESSES

\$1.59

Tailored models to set the school girl on the track toward 1937 fall smartness! All dark practical colors that she can wear now without a coat! Sizes 7 to 14.

ESCALATORS to the Wide Aisles in Block's Air-Conditioned Downstairs Store.

Did You Expect to Pay More for the Young Fellow's Suit? Then See These Tomorrow . . . and Pocket Your Savings!

## STUDENTS' 2-PANT SUITS

\$15.95

In Our Newly Enlarged Downstairs Boys' Shop . . . One of the Most Complete in Indiana

NOTE THE STYLING AND DETAILS ON THESE SUITS:

• New Broader Shoulders  
• New Sport Back Coats

• New Narrower Waists  
• Sizes 15 to 22

We've a complete selection of 1937 fall suits for the young fellow! And they're the qualities you would expect to have higher price tags! Note the quality of the fabric used . . . those 1937 style details . . . and the PRICE TAG . . . only \$15.95 for a student's 2-trouser suit that compares favorably with higher-priced lines.

## Hockmeyer Corduroy SLACKS

\$1.98

Junior long pants with matching belt! Pleated front, roomy strong pockets. QUALITIES THAT USUALLY SELL FOR \$2.45. Wine, green, gray, seal brown, light brown, royal blue. Sizes 6 to 12.

ESCALATORS to the Wide Aisles in Block's Air-Conditioned Downstairs Store.



Brand New "Braeburn" SPORT SWEATERS \$1.98

Big news, fellows! We've a complete selection of the 1937 fall "Braeburns" . . . in new styles . . . new models . . . and a multitude of colors! Sport back version included. Sizes 28 to 38.

ESCALATORS to the Wide Aisles in Block's Air-Conditioned Downstairs Store.

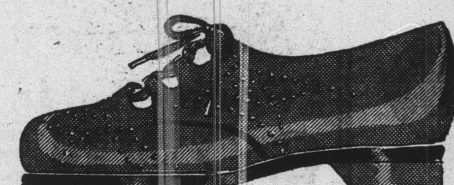
OUTFIT YOUR CHILDREN FOR SCHOOL IN

## Chieftan Archer Shoes

Built on Combination Lasts, Chieftan Archers Fit Snug at Heel and Instep and Allow the Ball and Toes to Develop in a Healthy, Normal Way!



\$1.98



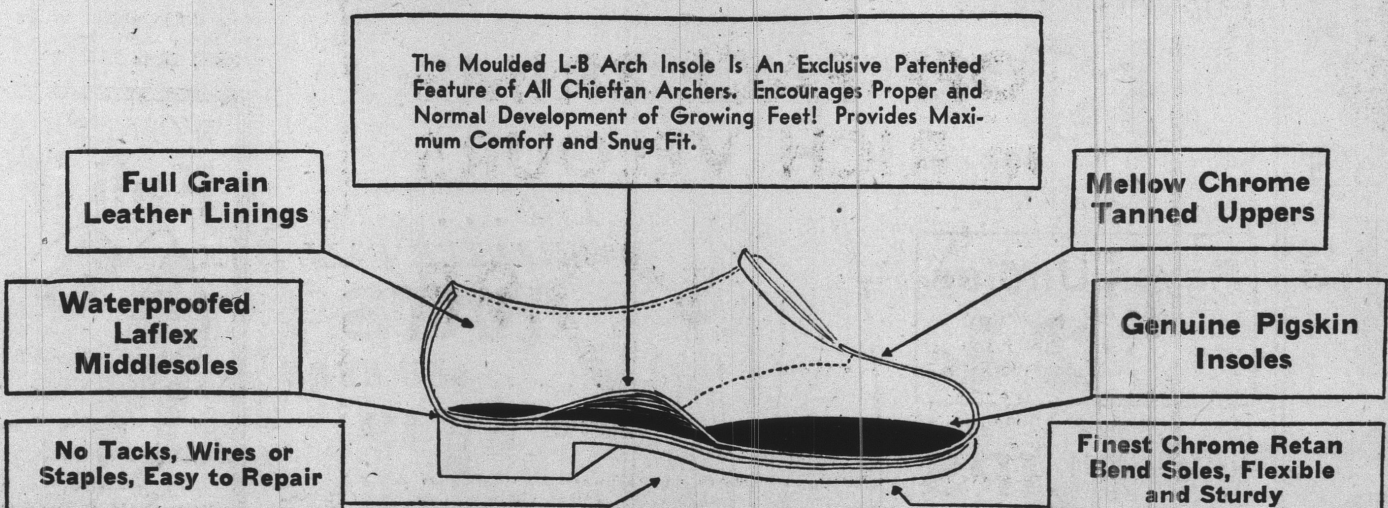
A "Short" Story in Underpinnings

SATIN\* anties, Briefs

2 for \$1.25 65c

Buy these for yourself or store away several for prizes, for giving! Dainty lacy and tailored styles made to fit in beautiful rayon satin! Tealose or blue in sizes for women and misses! \* Rayon.

ESCALATORS to the Wide Aisles in Block's Air-Conditioned Downstairs Store.



Full Grain Leather Linings

Waterproofed Laxlex Middlesoles

No Tacks, Wires or Staples, Easy to Repair

The Moulded L-8 Arch Insole Is An Exclusive Patented Feature of All Chieftan Archers. Encourages Proper and Normal Development of Growing Feet! Provides Maximum Comfort and Snug Fit.

Mellow Chrome Tanned Uppers

Genuine Pigskin Insoles

Finest Chrome Retan Bend Soles, Flexible and Sturdy

Choose From Sizes 8 1/2 to 3 for Boys and Girls

ESCALATORS to the Wide Aisles in Block's Air-Conditioned Downstairs Store.

## ANNUAL Trade-in Sale!

H. H. MAYER'S INC.

\$5. to \$25. FOR YOUR OLD WATCH!

The Most Forceful Offer Ever Made in the History of the Jewelry Business of America

Regardless of Cost—Regardless of Age—Regardless of Condition

Only \$24.75

BULOVA WATCHES for MEN and WOMEN

Brand new 1937 models in a multitude of styles, shapes and choice of white or natural gold. Come early for best selections. A replacement guarantee with every watch sold.

Also a complete selection of EL