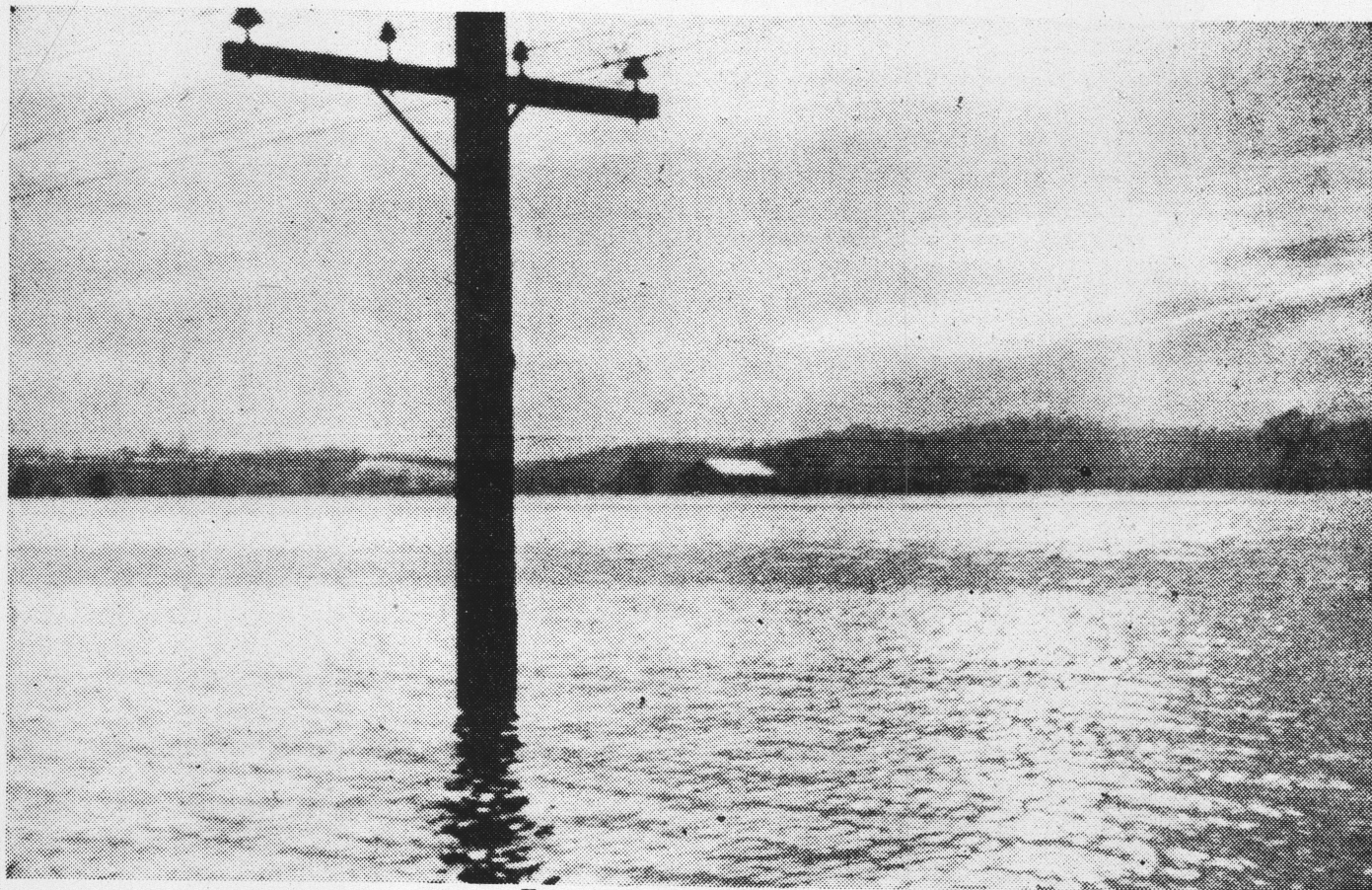


# What High Water Means to Southern Indiana Communities

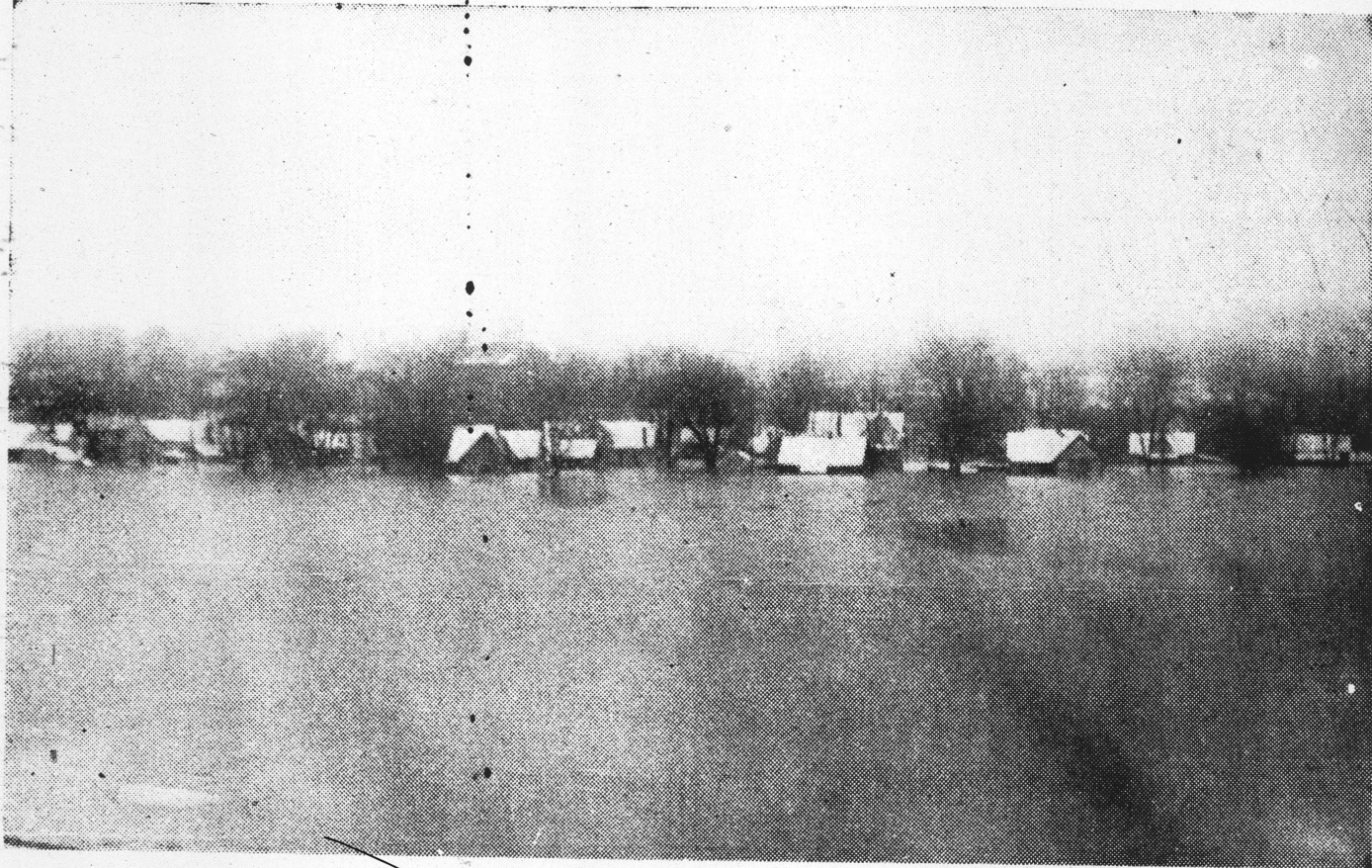
(Times Photos by Sheridan)



A convoy on the edge of Rockport. They call it motoring!



Farm land just south of Jasper.



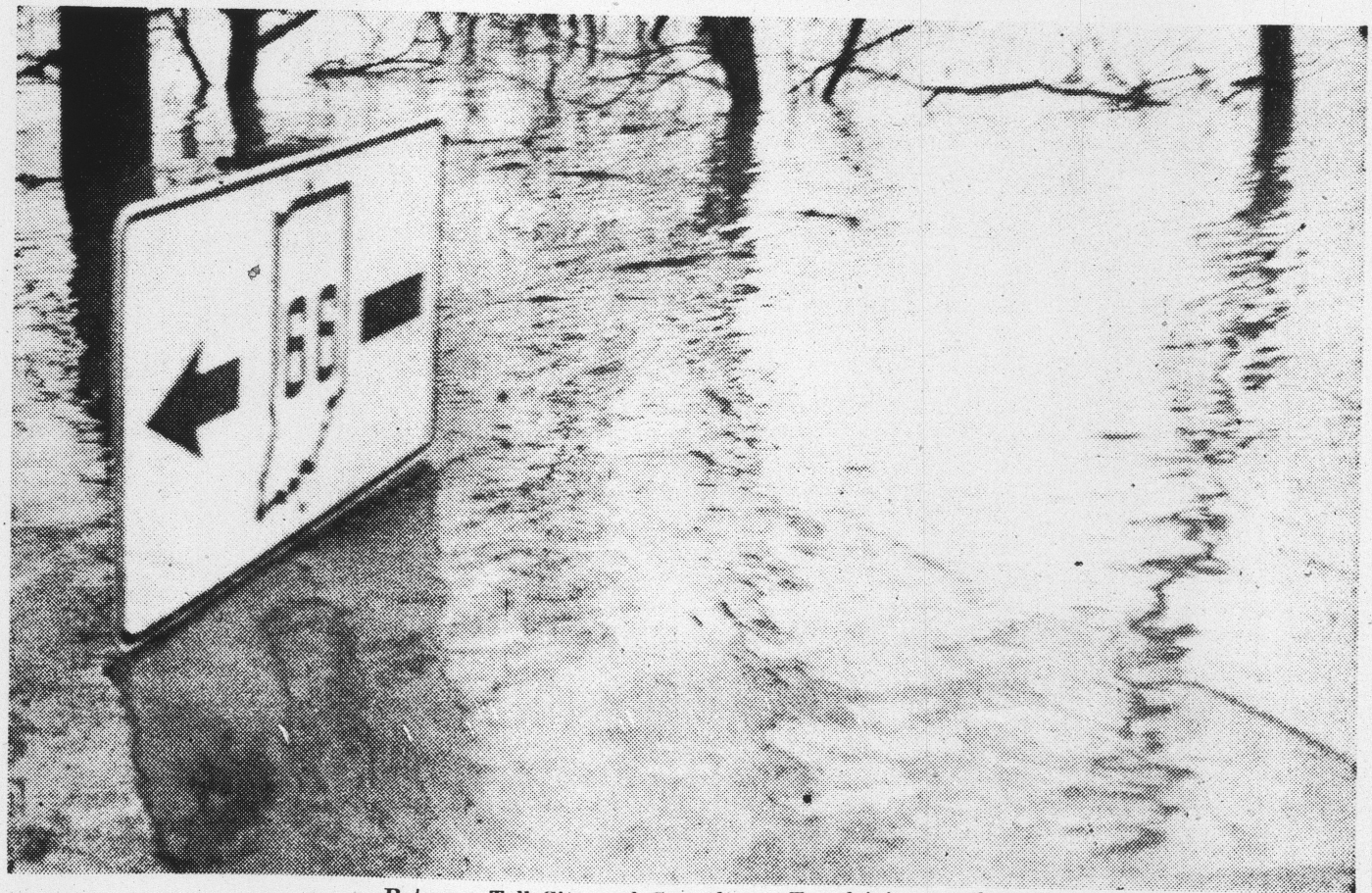
The evacuated town of Cannelton.



Tell City residents landing on the City Hall lawn.



The last refugees of Grand View.

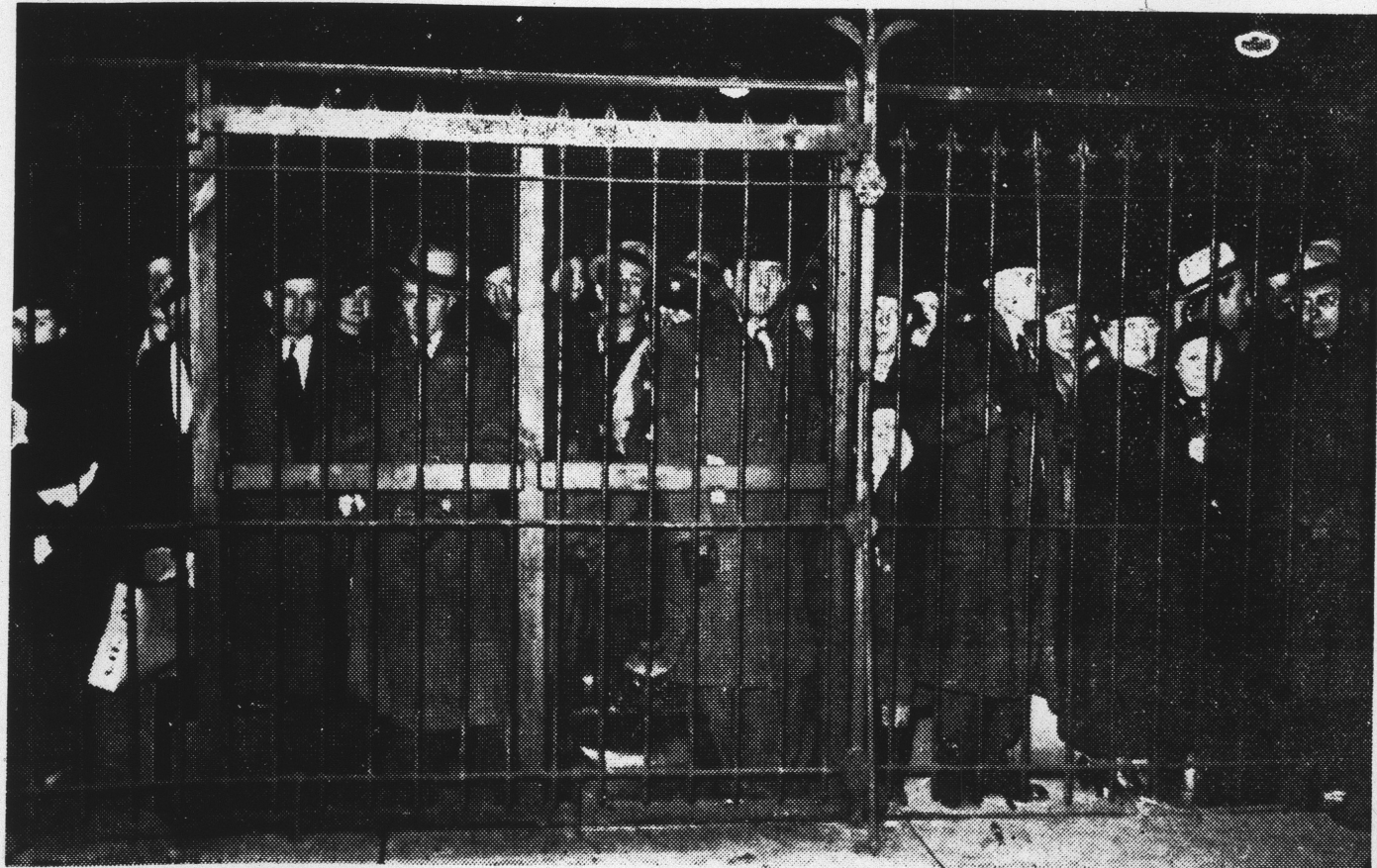


Between Tell City and Cannelton. Try driving south.



An Evansville street.

—Times Photo by Wheeler.



Waiting for the next train out of Evansville.

—Times Photo by Wheeler.