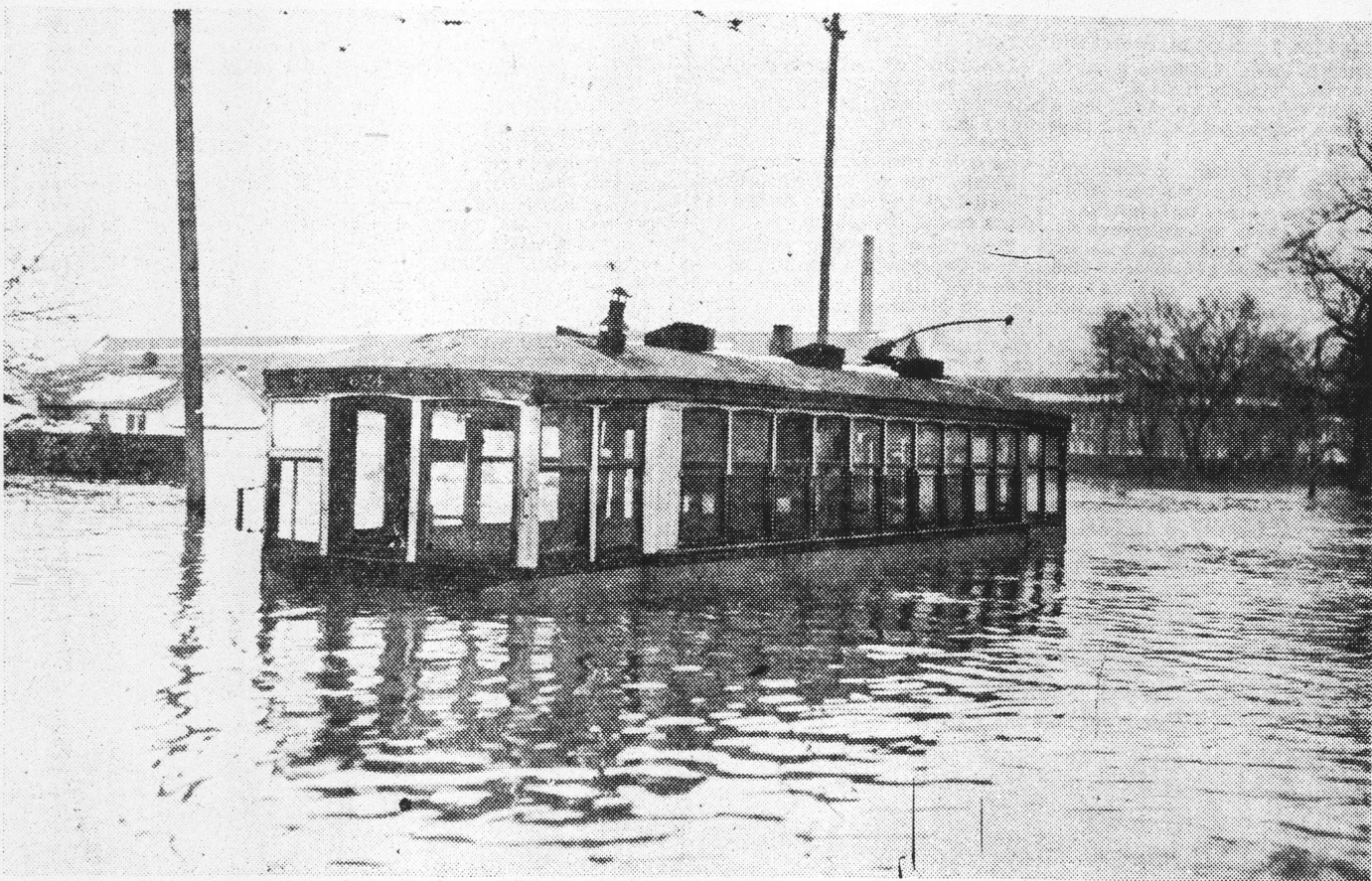


Evansville Gets Wet, Wetter, Wettest—and River Still Is Rising

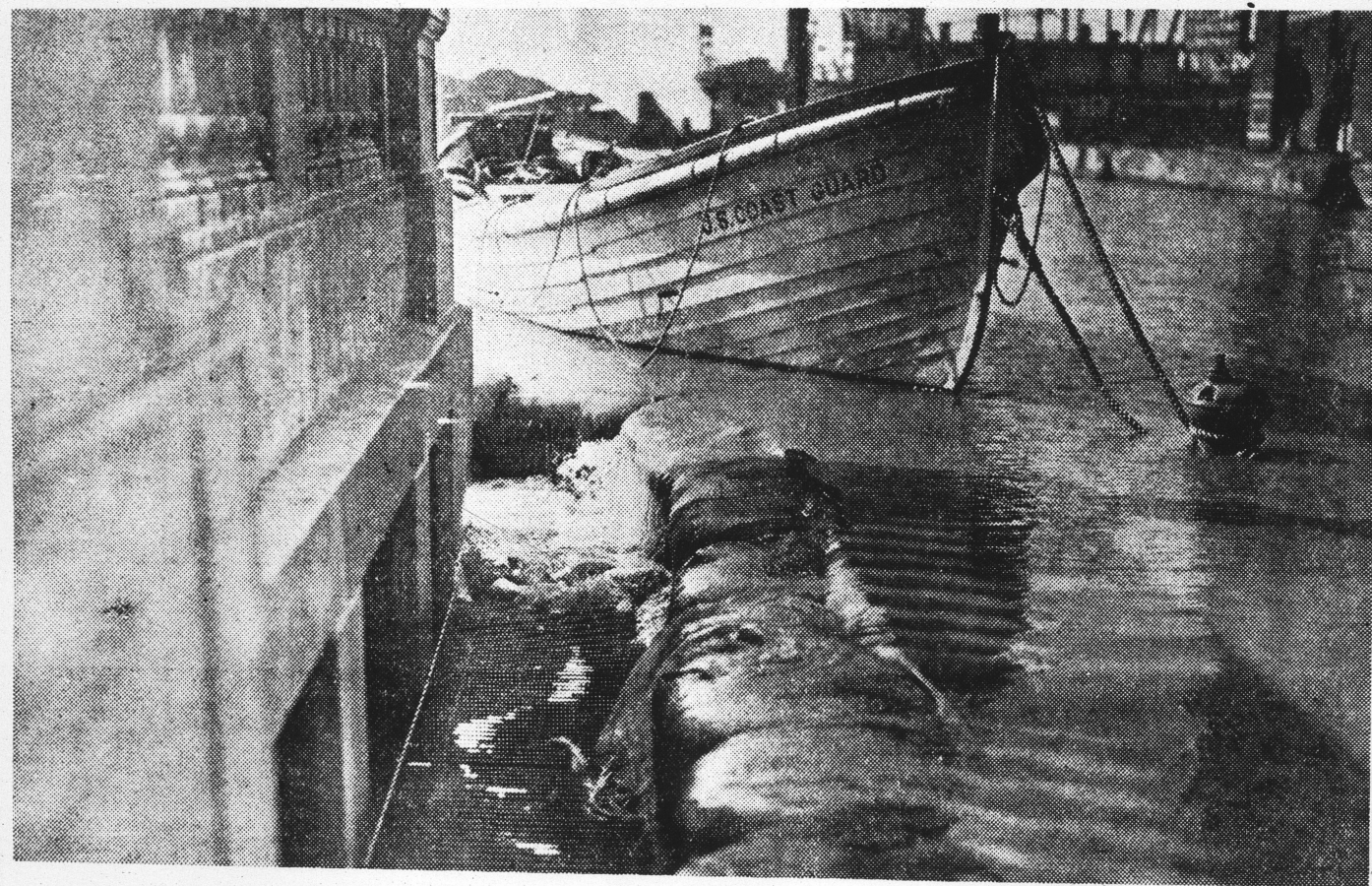
(TIMES PHOTOS BY WHEELER)



Evansville's streetcar service.



What causes dwellers to flee.



Moored . . . at an Evansville fire plug!



Marooned on an Evansville street.



Water is no respecter.



Sandbags. The newspaper must publish.



Loading the sandbags.

Gen. Tyndall Seeks Data on Towns West of Evansville

(Continued from Page One)

campments and troops in the entire flood section. He was due in New Albany this afternoon from French Lick, where he outlined plans for establishment of headquarters in the West Baden area. He is accompanied by Col. M. H. Williams, chief of staff, and Capt. Howard Bates. Scores of buses of all types and sizes crowd roads leading into Evansville. They are to transport approximately 500 more refugees to towns to the northwest today.

Boonville made preparation to house 100 from Evansville. There are approximately 200 being housed in a large home there now. Most of these refugees are known as "the real river folks" and live in Yankeetown, Dayville, Newburgh and Hatfield.

Nearly all were urged to evacuate several days ago but refused because "the river has never been that high before and it can't be this time."

We were told of one river dweller who was brought to Boonville three different times, only to return to his home and be rescued by a boat later.

The water has advanced 10 miles inland at several points on the Ohio. Farther north approaching French Lick, acres and acres are covered with ice.

Telephone contacts have been established in the field with all commanding officers of flooded zones.

"Our greatest worry is in the 'middle sector,' in those small towns along the Ohio from Road 43 to 45, because we are unable to get any information," he said. "I just received a report that Coast Guard boats are unable to reach Tell City and Cannelton as the current is now too swift."

Gen. Tyndall said that he is awaiting reports from three reconnaissances before establishing a post of command.

One reconnaissance was to be made by seaplane to Tell City and Cannelton. Another attempt to send Coast Guard craft into those two cities and surrounding towns was to be made today. The third survey was to be made by automobile, into the middle sector if possible, he said. The entire martial law area has been divided into three sectors—east, middle and west.

Gen. Tyndall would not confirm the report that the greatest danger to Evansville was the possible undermining of buildings by bursted sewers. "All such conditions must be watched closely," he said, "to prevent a typhoid epidemic from overflowing of sewers."



One way to keep the feet dry.