

# STATE ASSEMBLY WOMAN'S CLUB LUNCHEON ARRANGED

## Committees Of Workers Are Named

Local Branch Members To Be Hostesses At Party.

Members of Indianapolis Branch, State Assembly Woman's Club, have been assigned committee work in preparation for a luncheon for Indiana branch members Tuesday at the Indianapolis Athletic Club.

Mrs. Walter E. Treanor, president, announced the appointments.

Mrs. Walter J. Behmer, treasurer, is in charge of the luncheon committee, assisted by Mesdames Posey T. Kime, Estelle Ebaugh and Leo X. Smith. On the arrangements committee are Mrs. William F. Dudine, chairman; Mesdames Arthur L. Gilliom, William Storen and William Henry Harrison.

### On Program Committee

The program is being arranged by Mrs. Julius C. Travis, chairman; Mesdames S. K. Ruick, Joe Rand Beckett and James M. Ogden. The decorations committee includes Mrs. Lloyd D. Claycomb, chairman; Mesdames James P. Hughes, Alphonso Wood and Albert Walsman.

The reception committee includes Mrs. Frank Finney, chairman; Mrs. Treanor, Mrs. C. J. Buchanan, president emeritus; Mesdames Dana Mendenhall, Paul V. McNutt, Curtis W. Roll, William P. Evans, Harry G. Leslie, Arthur R. Robinson, Ralph N. Smith, George Batchelor, Lawrence Sullivan, Harvey J. Curtis, Edward P. Barry, Luke Duffey and Jacob Weiss.

The publicity committee is composed of Mrs. Archie N. Bobbitt, chairman; Mesdames Clarence Martin, Carl Wood and Clyde Karrer.

### Entertainment Is Planned

Entertainment is to include musical numbers by Mr. and Mrs. Saul Bernat and readings by Mrs. Chic Jackson.

State branch officers are Mrs. Thurman Gottschalk, Berne, president; Mrs. Ward G. Biddle, Bloomington, first vice president; Mrs. Martin Krueger, Michigan City, second vice president; Mrs. Rowland H. Hill, Carthage, corresponding secretary, and Mrs. Kime, treasurer.

The state branch is to meet for a luncheon Jan. 20 at the Claypool Hotel and in the afternoon members are to be honor guests at a tea given by the League of Women Voters.

## State Nurses Are to Select District Heads

Miss Beatrice Gerrin, Indianapolis City Hospital nurses' superintendent, is to be elected president of the Central District, Indiana State Nurses Association, at its annual meeting at 2:30 p. m. today in Banner-Whitehill auditorium.

Miss Gerrin is unopposed as president on the proposed ballot. Other nominees are Miss Grace Witwer, Methodist Hospital board of directors member, and Miss Mary York, Bloomington City Hospital superintendent, for first vice president; Mrs. Vera Buell, Indianapolis City Hospital, and Mrs. Alice Jones, Indianapolis school nurses superintendent, for second vice president; Miss Fern Coy, Indiana University Nurses Alumnae Association president, and Miss Hazel Johnson, Methodist Hospital, for secretary, and Miss Mary Heckard, Riley Hospital superintendent and Miss Mabel Kuse, Sunnyside Hospital superintendent, for treasurer.

### Candidates for Directorships

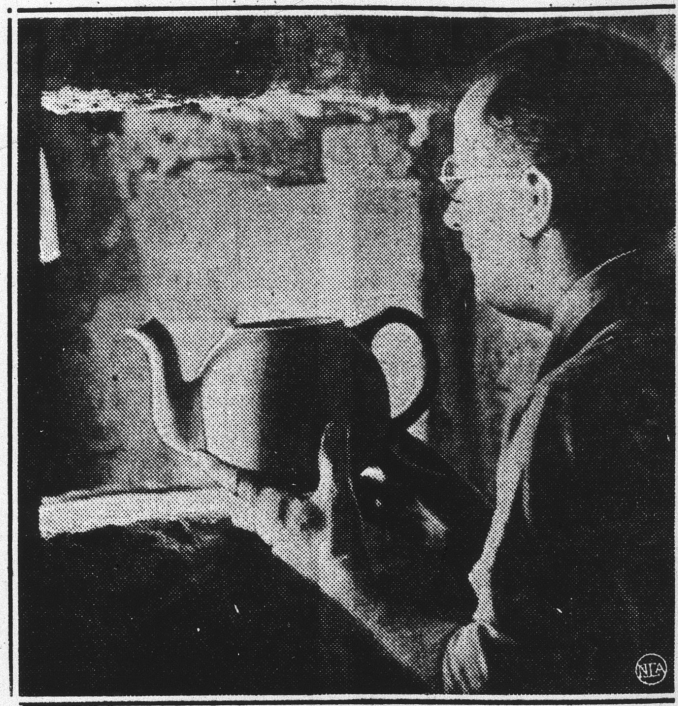
Candidates for the directors' board are, Miss Helen Broughton, Methodist Hospital children's floor supervisor; Miss Carrie McManus, Deaconess Hospital; Miss Mary Welick, St. Vincent's Hospital nurses' instructor, and Miss Aurelia Willers, Indiana University Nurses School instructor.

Miss Bernice Cain is arrangements chairman for a tea to follow the business Association presentation. To be hostesses: Misses Margaret Torr, Bernice Cain, Fern Coy and Lillian Martin.

### Guild Meeting Scheduled

The Theodore Potter Fresh Air Guild is to meet at 10:30 a. m. Friday at the school.

## New American Industry Gets Its Start



Tennessee Clay and Cheap Electricity to Bring Porcelain, Marked 'Made in U. S. A.' to Tables of Nation at Low Prices.

By NEA Service

KNOXVILLE, Tenn., Jan. 6.—Within the shadow of Norris Dam a small group of men have transformed gray Tennessee Valley clay into light, white, egg-shell porcelain dinnerware that is acclaimed as fine as any in the world—the first time that porcelain has been made from clay found in this country.

Up to now, either the clay or the finished product has been imported from Europe or Asia. And capping the achievement of opening America's clay deposits to industry, for the first time the firing or baking has been done by electricity.

According to S. T. Henry of Spruce Pine, N. C., who conceived the idea for the experiment, their success will have far-reaching consequences.

It means, for instance, that high grade dinnerware will become available in this country at a low price—possibly low enough so it can be sold in the lowest-priced stores.

### New Industry Seen

It means a new, major industry in the United States. Now you have only to look at the back of your plates, cups and saucers to see that they come from Japan, England, France, Poland and Czechoslovakia. Hereafter, in times of war, we no longer will have to depend on other countries for kaolin vitally essential to make spark plugs and electric insulation needed in military transport.

The fact that North Carolina, Georgia and Alabama have rich deposits of kaolin is not news. Up to now small quantities of it have been used in a mixture with imported kaolin. The real news is that porcelain can be made from the native clay. Also that, in such a refined state, it can take the place of imported kaolin.

Mr. Henry and TVA administrators picked Robert E. Gould, an American ceramics engineer, to head the experimental laboratories. Mr. Gould, then chief engineer of a ceramics plant in Poland, picked his staff and set to work. After months of experimenting with a washing and settling process that had not been used before, they found ways and means to remove all impurities from the native kaolin.

### Electric Oven Invented

Next was tackled the job of firing by electricity. Up to now electricity had been used in a small way in firing decorations on porcelain ware, but this called for a temperature of only around 900 degrees Fahrenheit, whereas the TVA researchers required a temperature of 2500 or more degrees for fusing.



THE LUXE STORE SPECIAL TOMORROW

THRIFT DAYS

All Merchandise Greatly Reduced

LAUREL WASHINGTON

Fragile-looking eggshell porcelain teapots made from Tennessee Valley clay are among the first all-American products of their kind, made possible through the research of Robert E. Gould at Norris Dam. Those on the left are two pots from the same mold. That at right is the larger because it has not yet been fired. Electric firing ovens (upper left) were designed to make use of the vast Norris Dam power supply that waits only the throwing of a switch (upper right) to work for the potential new ceramics industry.

## Organizer of Chapter to Be Guest of Honor

Mrs. P. M. Dill, only living founder of the Butler University Mu Chapter, Kappa Kappa Gamma Sorority, and Mrs. O. M. Pruitt, an early initiate, are to be honor guests at the chapter's 50th anniversary party tonight.

The program is to include a talk by Mrs. Thor Wessenberg, the chapter's first house chaplain, and the University Woman's Council chairman, and group singing of sorority songs.

The serving table is to be lighted by blue tapers, and greenery centerpieces. Cakes are to be decorated with 50, and the ice cream is to be molded as owls, a chapter symbol. Chapter active and alumnae members, and Indianapolis Association affiliates are to attend. Mrs. Emil Liner is the Mu Club president and Mrs. Harry Gresham Jones, the association leader.

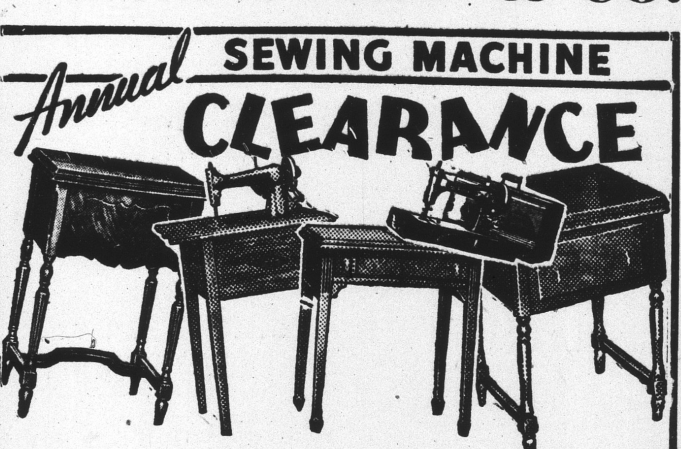
The association's next meeting on Feb. 9 is to be a supper and program at Mrs. Clark S. Wheeler's home, 4510 N. Meridian St. Mrs. Victor C. Heim, a member, is to give an illustrated talk on "Malay and Siam as Seen by the Camera."

## Studio Names Bridge Winners During Term

Mr. and Mrs. W. Taylor and Mrs. J. A. Conkey have been announced as the accumulative bridge winners for the last term at the King Bridge Studio. Prizes are awarded to each duplicate bridge winner, as well as City Master Point Certificates given by the United States Bridge Association. Contestants who play five out of eight games during the term are eligible to win the accumulative prize.

The winter term opened yesterday with a luncheon at the studio. Bridge instruction preceded the duplicate bridge game.

## L. S. AYRES & CO.



**Annual SEWING MACHINE CLEARANCE**

All new machines. Clearance of our regular stock at greatly reduced prices.

Formerly	Now
\$80 Desk Model White	53.55
\$95 White Rotary Electric	71.55
\$88 Majestic Rotary Model	62.50
\$70 White Rotary Portable	59.50
\$65 New Willard Desk Model	34.50

Other Models at Reductions up to 20%; Trade Allowance on Most Models.

**Floor Samples—Demonstrators Display Models**

We Repair All Makes of Machines Estimate Without Charge

No Down Payment—and You Pay Just a Few Cents a Day!

Group of Used Machines, \$5 and Up

Sewing Machines—Second Floor.

## Pupils Study Pet Animals For Project

Barn at Orchard School Is Place of Interest To Youngsters.

By BEATRICE BURGAN

OLD MacDonald's farm didn't have anything on the Orchard School pupils' pet collection. A barn built by the boys and girls is stocked with many animals and fowl, which previously were merely something seen fleetingly in pastures as they rode in cars across the countryside. Now they know the foods the animals prefer, something about their market value and their habits.

Frederick, John and Lucy Holaday contributed a 22-pound pig, which has eaten his weight in corn and grown to at least 60 pounds. The children weighed him daily for awhile until he became unwieldy. Now they guess his poundage.

**Boys Favor Butchering**

Fifth grade boys who are careful for the animal think it's high time the pig is butchered, but the girls have a different idea. "He's too young and innocent," they say. It's about settled that Christopher, who arrived on Columbus Day from the Frederick T. Holaday farm, will go to market, and the children will see the butchering process on some farm.

Carl Eveleigh Jr. contributed a banjo hen and rooster to the "farmyard." They came from his parents' suburban place. The hen and ducks were hatched at the school. At Christmas time many of the ducks were sold for holiday feasts. The chickens have been laying eggs—which are "dated" and sold at current prices. The duck and chickens were in the second grade project and the children have been keeping "books" recording the profits.

**Pet Mine in Collection**

Hilton U. Brown II has had some white mice as pets, and he contributed a pair of them for the fourth grade.

A ewe and ram have been mated. Their lamb is to be the property of the kindergarten. The barn also houses pigeons and rabbits. The children have been taking turns watering and feeding the animals, and have had experience in buying their feed.

In classes they have learned the use of the animals' by-products and have based English course compositions on their observance of the animals.

## Ethiopia Topic Of Travel Clubs

Ethiopia is the subject for discussion at two International Travel Study Club, Inc., chapters this week. The Alexandria chapter is to meet tomorrow for a pitch-in luncheon at the home of Mrs. H. G. Mason, 1333 W. 21st St., who will be assisted by Mrs. Mary Watt. Ethiopian readings are to be given by Mrs. A. R. Ward and Mrs. Carl Shupp.

The Australian chapter met yesterday with Mrs. F. C. Noble, 833 N. Bancroft St. Mrs. C. E. Castor and Mrs. H. A. Stevens were assistant hostesses. Mrs. Lota Snyder Emery gave a talk on Ethiopia. Mrs. Jules Zinter gave a reading.

## At Home After Wedding Trip

Mr. and Mrs. Raymond Dawson are at home at 1005 N. Pennsylvania-st. Before her recent marriage Mrs. Dawson was Miss Helma Mae Fitz, daughter of Mrs. Olive Fitz.



—Photo by Bretman.

## Program of Art Festival Is Arranged

Federation of Clubs' Event To Be Held Three Days Next Week.

Music, literature, drama and art are to provide the theme for the Seventh District Federation of Clubs' fine arts festival next Tuesday, Wednesday and Thursday at Ayres' auditorium. Exhibits are being arranged.

Tuesday is to be Poetry and Music Day, and Mrs. Edward Katterhenry is to open the program with a talk on poetry. In the afternoon Mrs. Rudolph F. Grosskopf is to lecture on "Indiana Composers." Music is to be provided by the Irvington Chorus, directed by Miss Grace Gibson.

For Literature and Drama Day on Wednesday Mrs. Bjorn Winger is to review "Heads and Tails" by Hoffman, and "R. V. R." by Henrik Van Loon. Mrs. Jane Johnson Burroughs is to direct a musical program by the White Cross Music Guild.

### Drama To Be Given

In the afternoon the Expression Club is to present "Solomon's Judgment," a drama directed by Mrs. Walter E. Jenney. The cast is to include Mesdames H. H. Arnholter, Frank Burns, R. B. Barnes, Mrs. Jenney and Miss Mary Beatrice Whitman. Songs from Handel's oratorio, "Solomon," are to be sung by Mrs. Max Critchfield and Mrs. Ruell Sexton, accompanied by Mrs. Rihus Doolittle.

For Fine Arts Festival Day Gordon Mess is to lecture and demonstrate a landscape painting. Music is to be offered by the Seventh District Chorus.

## EVENTS

### SORORITIES

Alpha Chapter, Omega Chi. Tonight, Miss Aletha Hayden, hostess. Lambda Chapter, Alpha Omicron Alpha. 1:30 p. m. Thurs. Mrs. H. T. Browns, 1025 N. LaSalle St., hostess. Business. Alpha Chapter, Omega Kappa. 8 p. m. Today. Miss Dorothy Huddleston, 1310 N. Gale St., hostess. Beta Theta Chi. 8 p. m. Today. Miss Mary Louise Bates, hostess. Delta chapter, Xi Delta Xi. 8 p. m. today. Mrs. Edna Vandever, 532 Woodlawn Ave. Beta Chapter, Alpha Beta Gamma. 8 p. m. Today. Mrs. Carl Joyce, 1529 Dawson St., hostess. Epsilon Club. Tonight. Miss Lois Thompson, 621 Highland Drive, hostess. Business. Alpha Chapter, Omega Phi Tau. 8:30 p. m. Today. Spink-Arms Hotel. Versa Sorores Chapter, Versa Cordis. 8:30 p. m. Thurs. Miss Mary Anna Perry, 4205 Boulevard Place, hostess.

### CARD PARTIES

St. Patrick's Church January Circle. 2:30 p. m. Thurs. School. Mrs. Frank Stahl, hostess. Cards. St. Mary's Social Club. 2:30 p. m. Thurs. St. Mary's rectory. Mrs. Mary Laker, Mrs. Bernard Hauser, hostesses. Cards.

## All Holland in Festive Attire For Marriage of Its Princess

By United Press

THE HAGUE, Jan. 6.—Prince Bernhard of Lippe-Deimold will receive the royal title of Prince of the Netherlands after his wedding tomorrow to Crown Princess Juliana.

All Holland is talking about the forthcoming wedding. It has united all classes into one solid, patriotic group as no event in recent years has done.

Let of 1700 diamonds from the Dutch East Indies. Various Javanese and Sumatran sultans have sent lavish golden and jeweled presents, as have European Governments and the Dutch Army and Navy.

Every night since the marriage banns were posted the stately old buildings of The Hague and the old canals have been illuminated with flood lights.

Juliana will be married in a long white velvet gown. Prince Bernhard will wear the uniform of a captain of the Blue Hussars of the Netherlands.

Wedding gifts continue to arrive. One gift was a carpet made by 10,000 women, each of whom took a single stitch. Another was a brace-

## The Nation-wide Value Event!

If you are one of the thousands who wear nothing but Nisleys you will not have to be urged to be here early. If you've never worn them this is your opportunity to try them . . . at a big saving—

A Great Selection Fall and Winter Styles and Colors!

**NISLEY Semi-Annual Shoe Sale**

Nisley Quality at Great Savings!

STARTS TOMORROW FALL and WINTER

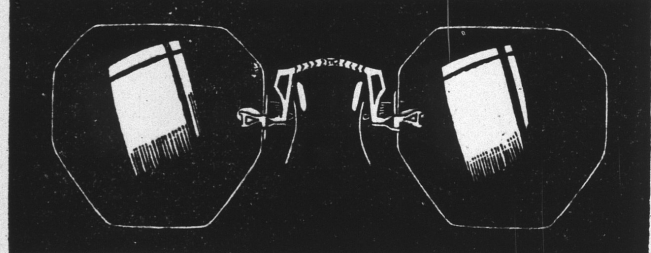
ONE LOW PRICE

DAYTIME STYLES  
EVENING SLIPPERS  
ARCH COMFORTS  
HIGH HEELS  
LOW HEELS  
FORMERLY \$1.95 to \$6

**2.95**

Nisley BEAUTIFUL SHOES

44 N. PENNSYLVANIA ST.



Are Your Eyes Up to Par? Wear Glasses If You Need Them!

Only a complete examination by an expert optometrist can determine whether or not you need glasses! Guard your eyesight—it is your most precious possession! Our optometrist and the most modern testing equipment assures you an accurate analysis of the present condition of your eyes!

•Dr. Waldo E. Stein, Optometrist•  
•USE SEARS PAYMENT PLAN!•

**Sears, Roebuck and Co.**