

STATE HIGHWAY DETOURS ADDED AT 5 LOCATIONS

Six Run-Arounds are Lifted
During Week, Reports
Road Commission.

Six detours were lifted from Indiana highways this week and five new ones were placed into effect, the State Highway Commission reported today.

Detours lifted include: Ind. 3, from Greensburg north; Ind. 16, from Roann to Ind. 13; U. S. 35, from Knox to U. S. 30; U. S. 36, from near Mechanicsburg to Sulphur Springs; Ind. 67, from Muncie to Ind. 28, and Ind. 331, from Ind. 25 to Bremen.

Detours in effect are:
Ind. 2—West of Ligonier, 3 miles over U. S. 4 and county road.
Ind. 3—Closed 2 miles from Ind. 56 to Ind. 255, from Newcastle north 10 miles over Ind. 35, county gravel and U. S. 36.
Ind. 4—Bart of Goshen, 3 miles over county gravel and concrete.
Ind. 6—City streets in Auburn.

Ind. 12—From Junction U. S. 30, in East Chicago, 10 1/2 miles over U. S. 20.

Ind. 15—From Wabash to Ind. 114, 2 1/2 miles over Ind. 13, 213 and 114.

Ind. 16—From U. S. 130 northeast 9 miles over U. S. 132 and county gravel.

Ind. 19—From Peru north 4 1/2 miles over county gravel.

Ind. 24—At New Haven 2 miles over county gravel and U. S. 30.

Ind. 25—From Rochester to Mentone 20 miles over Ind. 14 and 10.

Ind. 26—From Shelbyville to Indianapolis, 34 miles over Ind. 9 and U. S. 52 (plan to open tomorrow). From Indianapolis northwest 14 miles over Ind. 34, 32 and county gravel.

Ind. 27—From Indianapolis to Deer Creek to Leavenworth 4 miles over county gravel and concrete.

Ind. 31—From Peru and north 2 miles over city streets and county gravel.

Ind. 32—From Leavenworth to Boone County line 12 1/2 miles over county gravel.

Ind. 33—From Boone County line to Boone County line 12 1/2 miles over county gravel.

Ind. 34—From Wabash to Ind. 114, 2 1/2 miles over U. S. 13, 213 and 114.

Ind. 35—From U. S. 30 north to U. S. 36, 1 1/2 miles over county gravel road.

Ind. 36—From U. S. 30 north to U. S. 36, 1 1/2 miles over county gravel road.

Ind. 37—From U. S. 30 north to U. S. 36, 1 1/2 miles over county gravel road.

Ind. 38—From U. S. 30 north to U. S. 36, 1 1/2 miles over county gravel road.

Ind. 39—From U. S. 30 north to U. S. 36, 1 1/2 miles over county gravel road.

Ind. 40—From U. S. 30 north to U. S. 36, 1 1/2 miles over county gravel road.

Ind. 41—From U. S. 30 north to U. S. 36, 1 1/2 miles over county gravel road.

Ind. 42—From U. S. 30 north to U. S. 36, 1 1/2 miles over county gravel road.

Ind. 43—From U. S. 30 north to U. S. 36, 1 1/2 miles over county gravel road.

Ind. 44—From U. S. 30 north to U. S. 36, 1 1/2 miles over county gravel road.

Ind. 45—From U. S. 30 north to U. S. 36, 1 1/2 miles over county gravel road.

Ind. 46—From U. S. 30 north to U. S. 36, 1 1/2 miles over county gravel road.

Ind. 47—From U. S. 30 north to U. S. 36, 1 1/2 miles over county gravel road.

Ind. 48—From U. S. 30 north to U. S. 36, 1 1/2 miles over county gravel road.

Ind. 49—From U. S. 30 north to U. S. 36, 1 1/2 miles over county gravel road.

Ind. 50—From U. S. 30 north to U. S. 36, 1 1/2 miles over county gravel road.

Ind. 51—From U. S. 30 north to U. S. 36, 1 1/2 miles over county gravel road.

Ind. 52—From U. S. 30 north to U. S. 36, 1 1/2 miles over county gravel road.

Ind. 53—From U. S. 30 north to U. S. 36, 1 1/2 miles over county gravel road.

Ind. 54—From U. S. 30 north to U. S. 36, 1 1/2 miles over county gravel road.

Ind. 55—From U. S. 30 north to U. S. 36, 1 1/2 miles over county gravel road.

Ind. 56—From U. S. 30 north to U. S. 36, 1 1/2 miles over county gravel road.

Ind. 57—From U. S. 30 north to U. S. 36, 1 1/2 miles over county gravel road.

Ind. 58—From U. S. 30 north to U. S. 36, 1 1/2 miles over county gravel road.

Ind. 59—From U. S. 30 north to U. S. 36, 1 1/2 miles over county gravel road.

Ind. 60—From U. S. 30 north to U. S. 36, 1 1/2 miles over county gravel road.

Ind. 61—From U. S. 30 north to U. S. 36, 1 1/2 miles over county gravel road.

Ind. 62—From U. S. 30 north to U. S. 36, 1 1/2 miles over county gravel road.

Ind. 63—From U. S. 30 north to U. S. 36, 1 1/2 miles over county gravel road.

Ind. 64—From U. S. 30 north to U. S. 36, 1 1/2 miles over county gravel road.

Ind. 65—From U. S. 30 north to U. S. 36, 1 1/2 miles over county gravel road.

Ind. 66—From U. S. 30 north to U. S. 36, 1 1/2 miles over county gravel road.

Ind. 67—From U. S. 30 north to U. S. 36, 1 1/2 miles over county gravel road.

Ind. 68—From U. S. 30 north to U. S. 36, 1 1/2 miles over county gravel road.

Ind. 69—From U. S. 30 north to U. S. 36, 1 1/2 miles over county gravel road.

Ind. 70—From U. S. 30 north to U. S. 36, 1 1/2 miles over county gravel road.

HEADS BUDDIES CLUB



Samuel J. Kagan, above, has been elected president of the Buddies Club of Indianapolis, Inc., for the 1935-36 club year. It was announced today. Installation of officer is to be held Monday.

Other officers elected are Sol Fogie, vice president; Samuel Lewis, treasurer; and Noy Marcus, secretary.

HIGH SCHOOL PRESS BODY MEETS OCT. 22

Times Special

FRANKLIN, Ind., Oct. 2.—Hal Shultz, Indianapolis, has been secured as year book critic for the Indiana High School Press Association, which holds a three-day convention at Franklin College beginning Oct. 22.

A feature this year is to be specialized contests. Delegates, expected to number several hundred young journalists from high schools of the state, are to submit stories on the convention, Franklin College campus and editorials.

Feature articles also are to be written on a three-act play to be given during the convention by Wigs and Cues, college dramatic fraternity.

18 ARE INITIATED BY SHORTRIDGE LEAGUE

Eighteen new members have been initiated into the Shortridge Senior Drama League. They are Bates Johnson, Mary J. Lewis, Violet Sexton, Pat Healy, Hazel Galbreth, Phil Hennessey, Margaret Daigler, Patricia Best, Kathleen Shockley, Robert Stump, Helen Galbraith, Harriet Caylor, Evelyn Kettner, James Brock, Robert Merrill, Lorraine Bean, Sam Mantel and Lois Randolph.

EX-OFFICIAL IS JAILED

NASHVILLE, Ind., Oct. 2.—Benton Schrougham, former Brown County auditor, was held in jail today after his arrest on eight grand jury indictments charging embezzlement. Bond was set at \$60 on each charge.

CANADIANS SPEND \$1,182,323 IN U. S.

OTTAWA, Ont., Oct. 2.—Canadian tourists, returning from the United States, brought back \$1,182,323 worth of goods and merchandise between May 1 and Aug. 31, the Department of National Revenue reported today.

This was under the provisions of the United States-Canada reciprocal trade agreement, which permits Canadians, who have been in the United States not less than 48 hours, to come home with \$100 worth of merchandise, for personal use, duty free.

Clothing, the department announced, was the main item of import by tourists.

STAR STORE

BUY ON OUR TEN-PAY PLAN
360-370 WEST WASHINGTON ST.

FLATTERING TURBANS

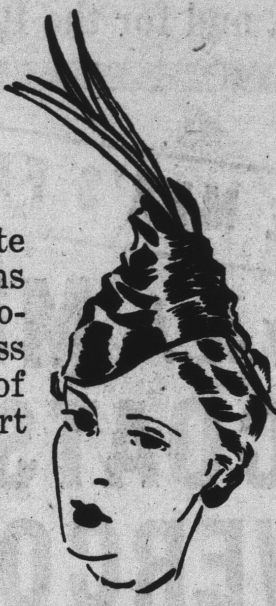
Specially Priced

\$1.79

Well-dressed women vote for these little turbans for their dressier moments. Their smartness assures these turbans of election into the smart fall wardrobe.

OTHER GROUPS
\$1.49, \$2.95, \$3.95 to \$5.00

Star Store, Second Floor.



OUTSTANDING VALUES IN ALL-WOOL

Twin Sweaters

Saturday Only \$1.89

Link and Link Weaves
Brushed Wools
Fancy Weaves

These sweaters are fine for school, business or general wear. Solid colors and two-color combinations. Women's and misses' sizes 34 to 40.

Star Store, Street Floor.

INDIANAPOLIS PUBLIC SCHOOL
TABLETS
WE RESERVE THE
RIGHT TO LIMIT
QUANTITIES
Star Store, Street Floor

3c

REGULAR 2c
QUILT PATCHES
Fast color 80 square prints.
Enough pieces for one
complete quilt top.
Star Store, Street Floor.

19c

Open
Saturday
Until
9 o'Clock

It's Easy to Have the Things You Want

10-PAY PLAN

Enjoy the
wear the
merchandise
followed w
plan is o

Fur Trimmed WINTER COATS

DRESS OR SPORTS TYPES

Specially Priced

\$14.99

Saturday
Only

FINE COATINGS
GUARANTEED LININGS
SEASON'S SMARTEST STYLES
LOVELY BROWNS, GREENS, WINE AND BLACK
SIZES 12 TO 20—38 TO 44

SALE! JUST 32
NORTHERN SEAL*
FUR COATS

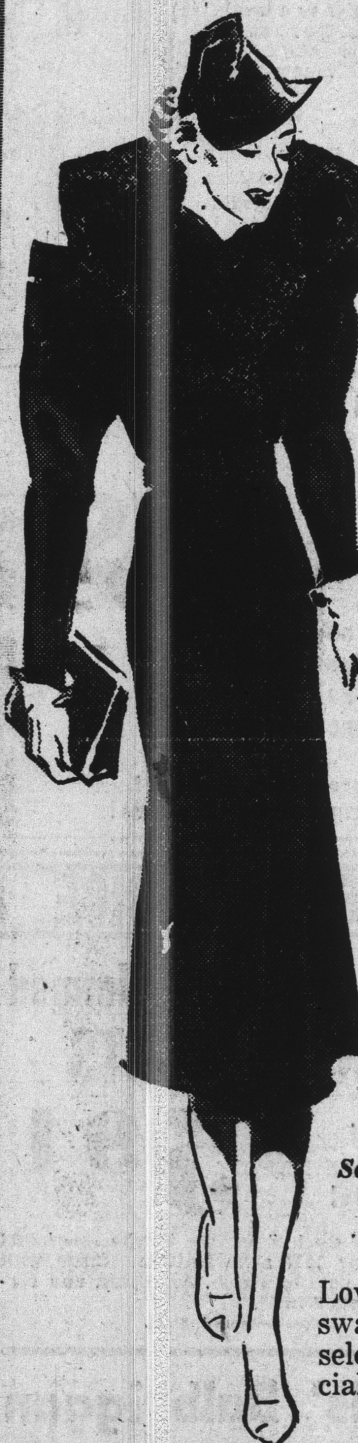
Size 14 to 44

\$33.00

Lovely, full length, Northern Seal* and smart
swagger styles. Guaranteed linings. Carefully
selected pelts. All are a deep rich black. Specially
priced for Saturday.

Star Store, Second Floor.

*Dyedoney



Women's and Misses'

NEW FALL DRESSES
styled right - priced right

HUNDREDS OF
NEW ARRIVALS

\$6.95

* TUNICS
* STREET STYLES
* PARTY FROCKS
* Afternoon FROCKS

Styles you'll adore at sight. Numberless shades
of brown, rust, green and plenty of regal
blacks. As usual, the Star Store gives you the
latest fashions that fit your budget. Sizes 12
to 20, 38 to 52, 16 1/2 to 26 1/2.

Another Smart Group of
FALL FROCKS

Priced at Only

\$3.98

* TUNICS
* STREET STYLES
* AND DRESSES
* FOR AFTERNOON
WEAR

* BLACKS
* BROWNS
* GREENS
* RUSTS
* 14-20—38-52

Star Store, Second Floor.



GENUINE



These lovely
most rigid
hand picked
crepe twist
yet they're
hose. If the
for \$1.00 to
new fall shade

1,000-Sheet Crepe
TOILET TISSUE
Kraft brand, sanitary wrapped, soft,
quality. (We deliver a dollars
worth.)
Star Store, Street Floor.

Star Store, Street Floor.

Girls' Warm WINTER COATS

Specially Priced

\$4.98

Sizes 7 to 14

Dress coats, warmly interl
in fitted styles. Sport coa
plaid back coatings. Po
swagger styles that girls
so well.

Star Store, Second Floor.



Warmly
and be
ored p
brown a

Women's Outing Flannel GOWNS

Sizes 16-17

59c

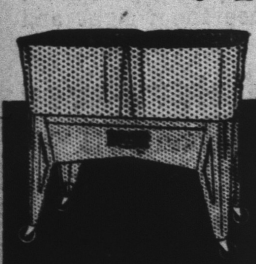
Full cut, double yokes, in
stripes and plain colors. E
sizes, 68c.

Women's Heavyweight Outing Flannel PAJAMAS

2-pc. styles, contrasting
y-trimmed and combi
ations, plain colors and
prints. Sizes 16, 17,
Star Store, Second Floor.

Star Store, Second Floor.

STAR STORE DOUBLE VALUE



Twin Wash Tubs
Large Dexter Washer
BOTH
For the Price
of the washer
\$49.50

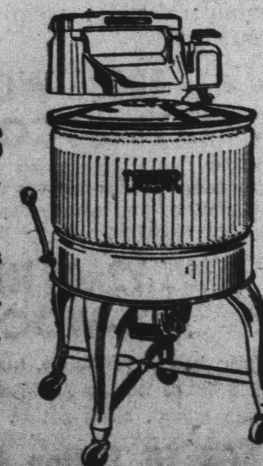
\$1.00 DELIVERS
2 YEARS TO PAY

Come in Saturday and see this
mammoth value. A marvel of modern
washing machine designing.
The Dexter is built to render life-
time service in the home. The
world's champion endurance wash-
er. If you have no use for the twin
tubs, we will make a liberal allow-
ance on your old washer.

Electrical Appliances Department

STAR STORE

360-370 W. Washington St.



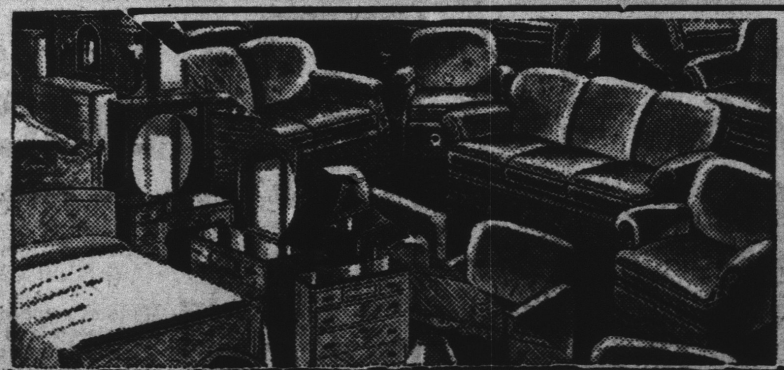
Furniture SPECIALS

Money Saving Prices

Large 4-Pc.
BED-
ROOM
SUITES

\$44.00

Modern or conventional de-
signs. Bed, vanity, dresser
and bench. Large round or
oblong mirrors. Highly
polished, two-tone finish.
Hand decorated.



\$1.00 DOWN DELIVERS

8-PIECE DINING ROOM SUITE

LARGE SIZE DRESSERS

Modern Black & White Gas Range

WALNUT FINISH END TABLES

5 FT. X 8 FT. CURTAIN STRETCHERS

Large round, modern Mirrors. Three large
drawers.

Table top. Large oven.
Utility drawer. Broiler oven.

Patterned top. Turned legs. Packed in
bundle, ready to set up. No glue. No
screws.

Folding style. Station-
ary, rust proof pins.

\$69.00

\$14.95

\$39.00

69c

79c

2-Pc. Velour
LIVING
ROOM
SUITES

\$39.50

Full spring construc-
tion. Reversible cush-
ions. Wing or club
chairs. Rust, green,
taupe and red.

NASHUA WOOL MIXED BLANKETS



\$2.97
Pair

Regularly
\$3.39

Jumbo 72x84 in.
size. Heavy 4 1/4-
pound weight per
pair. Bound in matching
sateens. Heavy napped
quality will give long
wear. Colorful block plaids
of rose, blue, gold, green, or-
chid and cedar. Contains
not less than 5% wool. Sat-
urday Special.

70x80 Cotton

NASHUA BLANKETS

Large double-bed size. Well
napped. Colorful plaids of
rose, blue, green, orchid and
gold.

\$1.39
Pair

Star Store, Downtown

SALE! \$1.00 54-In. V

\$1.00

Special Purchase
800 Yards

All new fall
and winter
woolens in all the
wanted new weaves
and colors. Coating
or dress weights in
diagonals, crepes,
tweeds and new Scotch
plaids. Browns, Blues,
Blacks and Rusts.

Brand

DRESS

New French dress crepe
tested and washable. O
over 30 of the newest fa
medium and large printed
Also paisley patterns.