

BUTLER CO-EDS TO PARTICIPATE IN HORSE SHOW

University Riders Are to Dress as Historical Characters.

The Butler University physical education department is to be represented by 18 co-eds in the fourth annual roundup of the Indiana Saddle Horse Association at Gregg Farm Sunday.

Miss Catherine Thompson, Butler instructor in equitation, has announced that the co-eds are to ride as a group in the grand parade opening the show. Each co-ed is to be dressed as a famous character in history.

Participants are to be Joan Wintz, Carolyn Rehn, Florence Baus, Elizabeth Howard, Ann Aufderheide, Marie Schubert, Marjorie Craft, Betty Giffin, Ann Burger, Mari Louise Fallender, Margaret Spencer, Catherine Heard, Joan Jose, Doris Goldsmith, Mary Jane Shaffer, Jeanette Shields, Mary Kathryn Mangus and Marjorie Pike.

Reporters Appointed

Appointment of 19 Butler journalism students as reporters for the Collegian, campus newspaper, has been announced by Albert McCord, editor-in-chief. They are to serve during the fall semester.

They are: LaVon Oddy, Mary Ellen LaRue, Helen Ellis, Betty Harger, William Macy, Harold Tru-lock, Betty Jane Weier, James Hanna, Frances Patton, Simon Reisler, Carolyn Varin, Robert Walker, Bill Hart, Fanchon Parsons, Eugene Roderick, Harriet Lindley, Kathryn Lewis, Dorothy Steinmeier and Mary Ellen McKee.

Sixty new uniforms have been purchased for the Butler band, the trustees' executive committee announced today. The new uniforms are to be worn for the first time at the Butler-Chicago game in Chicago, Oct. 10. They are of blue whipcord with white trimming. Caps have white leather tops.

GYMNASTIC UNION ENROLLS STUDENTS

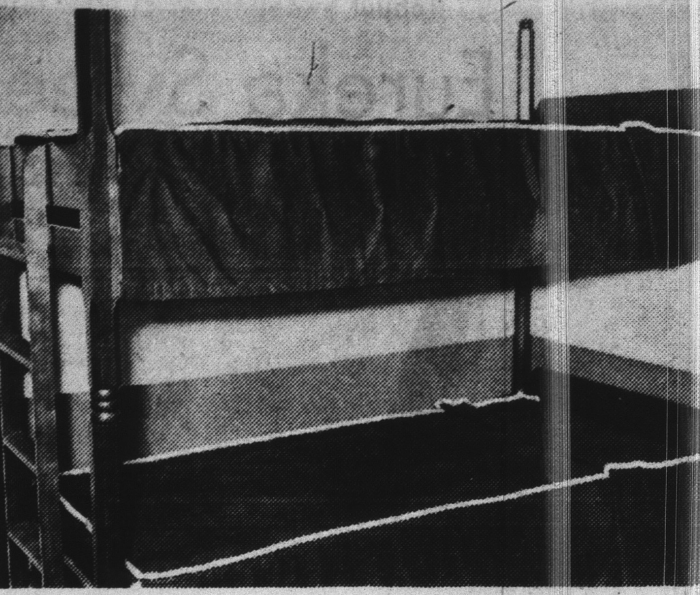
Five freshmen granted scholarships based on work in Indianapolis high schools are among the 77 students enrolled at the Normal College of the American Gymnastic Union here, Dr. C. B. Sputh, president, reported today.

They are Mary McCracken, Washington High School; Genevieve Sherrill, Shortridge; and Helen Hogan, Roscoe Miller and Cassel Thrasher, Manual Training.

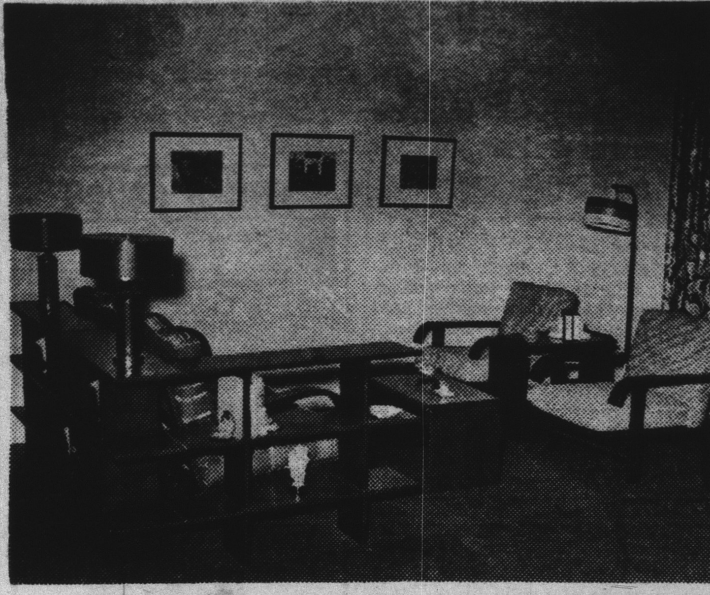
BULLITT IN FRANCE

LE HAVRE, France, Sept. 30.—William C. Bullitt, America's new ambassador to France, arrived today on the Washington. He was greeted by high government officials and immediately took a train for Paris.

Five Test Houses Built by Purdue Research Project Are Leased to Tenants as Experts Continue Data Study



Bedroom



Living Room

LAFAYETTE, Ind., Sept. 30.—Five houses have been completed as the first unit of the Purdue Housing Research Project and leased to tenants now occupying them.

The present Purdue housing research studies have two principal objectives. The first is the cost study of small houses. To this end, a different construction method was used in erecting each house, but each house was limited to \$5,000 in cost, each providing the same accommodations. Accurate account was kept of all items entering into construction of each house. These costs are being studied, analyzed and tabulated.

The cost data on one house has been completed and published as one of the booklets now being issued by Home Information Service of Better Homes in America Inc., at Purdue. Booklets covering the cost of the other four houses are to be published as rapidly as data can be prepared.

Costs Shown in Detail

Detailed costs of the \$5,000 steel house provide the most comprehensive information on the cost of building in the small house field that ever has been available to the public. According to C. Paul Ulmer, technical assistant of the project, nearly one-third of the cost of the house is for labor and about two-thirds materials used in construction.

The first house for which cost figures are available was erected by the Insulated Steel Construction Co. of Middletown, O. The house has a living-dining room, kitchen, three bedrooms, bath and garage. Its total cost was \$4992.20. The labor cost was \$1,271.00 and material, \$3,263.85. The figures disclose that plumbing, heating and electrical work amounted to less than 20 per cent of the total cost.

Foundations, floors, walls, roof and millwork represent the major cost items and were 66 per cent of the total. The largest single cost item was that of the steel walls,

23.94 per cent of the total. For this particular house, the construction cost was \$3.90 per square foot, or 36 cents per cubic foot.

Accurate Check Kept

Timekeepers were stationed on the job during construction to check hours of labor and material quantities used. From their records and data furnished by contractors, itemized figures covering the entire cost of the house were obtained, studied and tabulated.

The Purdue Housing Research Project studies have broken down the cost of this house into individual items—labor, materials, contractors' profit and overhead as well as unit cost of construction for the numerous items going into the house. The report discloses what it costs to build foundations, lay floors, paint the walls, install electrical outlets and other essentials.

The second phase of the Purdue Housing Research Project's activity consists of observation of performance of the equipment installed in the houses, the durability of the

construction materials used, and the quantity and cost of such items as gas, coal, water and electricity required to operate them.

This will be a continuing activity carried over a period of time in co-operation with the tenants living in the houses.

BRITON HERE TO SEE LOCAL WATER PLANT

Making an inspection tour of water supply plants in the United States, Lieut. Col. C. H. H. Harold, an official of the London (England) metropolitan water board, was in Indianapolis today to study operations of the Indianapolis Water Co. Col. Harold also is to visit the S. Harding-st sewage disposal plant. His American tour is arranged by officials of the United States Public Health Service in Washington.

DROUGHT AID FOR DOWNSTATE ASKED

WASHINGTON, Sept. 30.—Senator Sherman Minton today conferred with Department of Agriculture officials in an attempt to bring drought relief to farmers throughout Southern Indiana. A survey is to be made and coun-

ties where farmers are found to be in need because of drought likely will be designated as part of the drought relief area and given help this winter, the Senator said.

At present only Clark and Warrick have been designated as drought relief counties in Indiana. Senator Minton said the entire tier of southern counties should be included, with possible exception of the Vandenburg-Posey pocket. These counties bordering on the Ohio River, have had fair crops, he said. He gave as a partial list of those

counties which ought to be included: Pike, Dubois, Perry, Crawford, Harrison, Floyd and Jefferson.

CYRIL TOLLEY TO WED

By United Press STAMFORD, Conn., Sept. 29.—A marriage license was obtained here today by Cyril Tolley, British golfer, and Mrs. Ethel Smith Atwell, divorced wife of the stage and screen comedian Roy Atwell. They said they planned to be married Saturday.

THURSDAY ONLY!

Big, Luscious Pecans Top This Delicious

Toasted Spice Cake



24c Regularly 30c

This goody, goody spice cake will remind you of the ones that used to come out of your mother's oven! Wholesome ingredients, rich, tasty spices and expert cooks make it delicious! Try one tomorrow.

Betsy Ross Shops

Hume-Mansur Bldg.

Uptown Theater Bldg.

Circle Tower Bldg.

CHALLENGING ALL CARS!

Make way for the exciting new STUDEBAKERS

THE SPOTLIGHT CARS OF 1937



ACTUAL PHOTOGRAPH

MAKE way for the new beauty of Studebaker's gleaming "winged victory" radiator grilles and louvers! New one-piece hoods!

Make way for Studebaker's impressive new steel-reinforced-by-steel bodies with a finish twelve coats deep!

Make way for the loveliest interiors you've ever seen in automobiles—styled by Helen Dryden—lavishly spacious with four new inches of leg room, new head room and wide, deep, contour-cushioned seats!

Make way for Studebaker's new luggage compartments—the

roomiest you've ever seen! Make way for the world's first doors that stay shut tightly even if closed only lightly... for the world's first built-in warm air windshield defrosters... for a new and exclusive easy parking steering gear!

Make way for new operating economy that promises to surpass the official AAA records set by the Studebaker Dictators and Presidents of last year!

\$665

FREE! 5 STUDEBAKER PRESIDENT SEDANS for the best forecasts of the Presidential election. Tune in Studebaker Champions Monday night N.B.C. coast-to-coast chain for complete details.

STUDEBAKER'S C. I. T. BUDGET PLAN OFFERS LOW TIME PAYMENTS

LITZELMAN and MORRISON, Inc.

2504 N. Meridian Street

DISTRIBUTORS

Phone TA 1bot 0900

TED BYRNE COMPANY
RI. 2411—963 N. Meridian St.
LEW COHEN, INC.
RI. 4663—401 N. Capitol Ave.

INDIANAPOLIS DEALERS
RALPH DUGAN MOTOR SALES
537 E. Washington St.

PHILLIPS & STACK
BE. 2995—2216 W. Michigan St.
BROWN & SCHRECKENGOST, INC.
TA. 2377—2397 Central Ave.

Black Motor Sales... Nashville... Marshall & Son... G. Frank Walter... Gordon Bush Sales... Mullins Motor Sales... Martin Sales & Service... Indianapolis Dealers... Phillips & Stack... Brown & Schreckengost, Inc.

Block's SALE of DIXIE HEATERS

Known the World Over for Quality Construction!

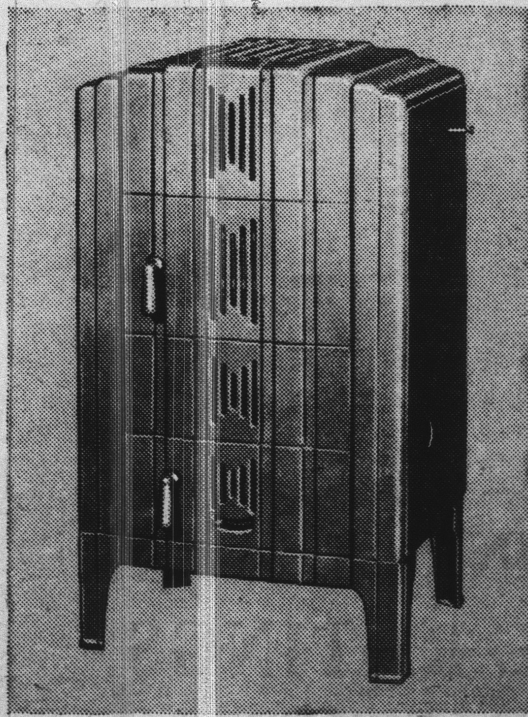
19.98

We bought a carload of these new, modern designed heaters when prices were low last spring. Now we pass our savings on to you. The size of the heater illustrated is 40 in. high, 22 in. wide, 17 in. deep. All others are priced proportionately low for this sale.

Outstanding Dixie Features:

Equipped with Water Humidifier Side Shaker Louvers on side 2-Pc. Dome with Hot Blast Tube 16-in. Cast Iron Bowl Duplex Grates for Coal or Wood Rustic Bronze Finish

\$1 DOWN DELIVERS—Including Our Low Carrying Charge!



Coal Ranges

With Reservoir... Duplex Grates

39.95

Heat Indicator Modern Warmer Shelf Copper Reservoir

For warm, glowing, winter comfort and excellent cooking performance! Equipped with the important Duplex grates for burning both coal and wood. Pouch feed type. Sanitary white porcelain front, Bakelite handles.

\$2 Down Delivers Your Range! Including Our Low Carrying Charge!

Other Coal Ranges up to 89.50

BLOCK'S—Stoves, Fifth Floor.

