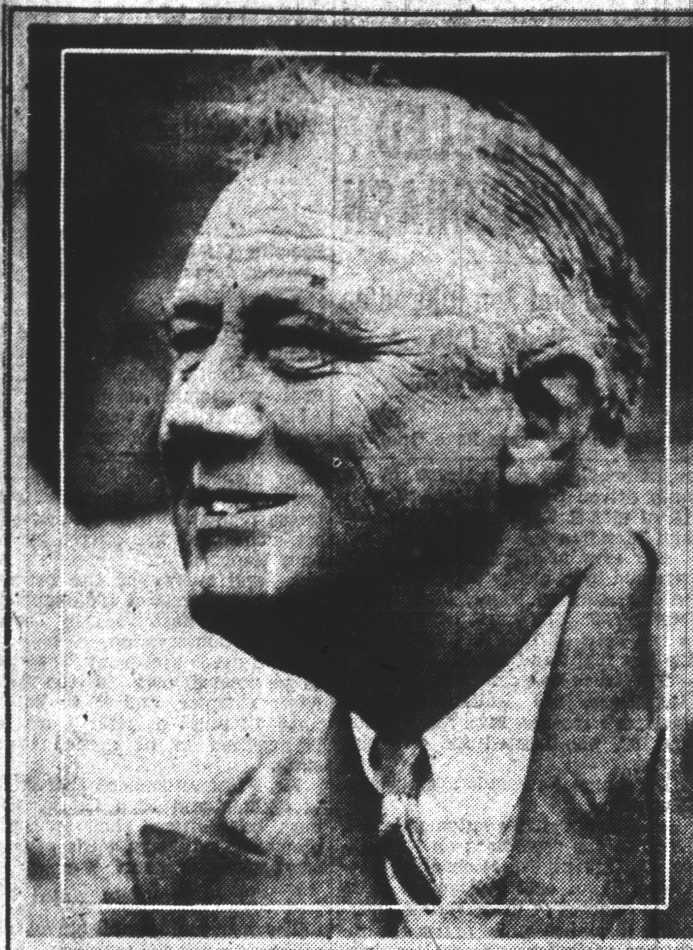


The Fisherman Returns From His Voyages—Tanned, Healthy and Happy



The camera catches President Franklin D. Roosevelt in a varying mood as he attends a picnic at Hering Cove, N. B., after landing at Campobello, N. B., from his fishing trip along the coast of Maine.

WIFE SLAYER DIES IN CHAIR

Choir Singer Goes to Death Without Commenting on His Crime.

By United Press

BOSTON, Aug. 4.—Newell Paige Sherman, former choir singer and scoutmaster, was electrocuted today for drowning his young wife for the love of a 17-year-old girl.

The girl, Esther Magill, who said at his trial that she never intended marrying him, worked her regular hours at a factory yesterday and spent the evening at the home of an aunt in Worcester.

She did not sign a petition for clemency that 51 others of the factory workers sent to Gov. James M. Curley.

Sherman entered the execution chamber at 12:02 a. m. One minute later Executioner Robert Elliott, who serves six states, pulled his switch.

At 12:09 two guards lifted Sherman's 240-pound bulk from the chair. He went to death with no comment upon his crime.

At his trial he repudiated a confession in which he had said that he intentionally overturned a canoe on Lake Singit, pushed and trampled his wife under water, and left her to drown while he swam to shore and reported an "accident."

Children's Tent Stolen

Neal Myers, 1421 N. Kealing-av., was robbed last night of a tent he had placed in his back yard for neighborhood children to sleep in on hot nights.

Lewis Fight Is Likely to Split Labor Ranks, Clapper Observes

Craft Union Leaders 'Trying' Members of C. I. O. in No Mood for Compromise, Writer Says.

BY RAYMOND CLAPPER

WASHINGTON, Aug. 4.—After 50 years of cohesion, the organized labor movement in America appears about to split into two groups. John L. Lewis and his followers in the industrial union movement are on "trial" for insurrection against the A. F. of L. and their excommunication seems imminent. Lewis claims to represent about 40 per cent of the A. F. of L. membership, an indication of the extent of the "insurrection" and suggestive of the upheaval which his excommunication would cause.

Last week President Green of the A. F. of L. appeared hopeful of a reconciliation. But the A. F. of L. council is now in session. Lewis refused to appear and the "trial" was ordered to proceed. Heads of the craft unions represented on the council, the princes of labor's realm, indicated they were in no mood to compromise with rebellion. Green says now there is little hope of an amicable adjustment.

If this proves to be the case, the labor movement shortly will split into two groups, the A. F. of L. ruling hierarchy clinging to its craft unions composed of highly skilled workmen and the Lewis group moving into the mass production industries like steel and automobiles to organize the vast armies of workmen, skilled and unskilled alike, into industrial unions, each of which would cover a whole industry.

Lewis Attacks Setup

It is possible that the insurgents at some future time might capture the A. F. of L. organization, but to

do so would require a revolution involving substitution of a new regime.

Lewis has taken the position that the craft union mode of organization is out of date in an age of large-scale industry. He regards it as impracticable for labor to deal with, say, General Motors, through 15 to 20 different unions, segregating the electricians, machinists, boiler-makers, painters and other trades into independent groups. He says organize all automobile employees into one big union so that they can fight as a unit and not be torn apart among jurisdictional jealousies.

In principle his plan is not entirely rejected by the controlling forces in the A. F. of L., where the advantages of industrial unionism are recognized as applicable to some types of industry.

But labor union politics comes into the matter. This is a kind of class war within labor's ranks. The A. F. of L. is dominated by heads of the old craft unions. The man who

is "prosecuting" Lewis before the A. F. of L. council is John P. Frey, head of the metal trades department. Under his jurisdiction are the metal trades craft unions, many of whose members or potential members would be lost to a general union of automobile workers. Similarly the carpenters, electricians and other craft groups would find their membership field restricted or reduced by the setting up of mass production industrial unions.

50-Year Cycle Complete

Accordingly, these craft unionists have, so Lewis charges, sabotaged attempts to organize mass production industries as ordered by the San Francisco and Atlantic City A. F. of L. conventions in the last two years. Alleging that the A. F. of L. was not carrying out this mandate to organize these industries, Lewis some months ago set up his Committee for Industrial Organization and took the bit in his teeth. Now the A. F. of L. charges this was insurrection.

This crisis completes the 50-year cycle of labor. Back in the eighties the Knights of Labor was somewhat analogous to the industrial union. It appealed to unskilled workers, and was politically conscious, forming alliances with Populists, Greenbackers, public ownership groups, and in general evolving itself into a political labor party.

But skilled workmen, who had no interest in the hordes of common

labor which were diluting the labor market and pulling down wages, decided that it would be to their interest to cut loose from the rag, tag and bobtail. Samuel Gompers rapidly built up the highly skilled craft groups into the American Federation of Labor, thrusting aside dreams of political power and concentrating on the practical matter of boosting the wage scale for the various skilled crafts.

Now there has appeared a new leader who proposes to organize the unskilled masses who have been ignored by the skilled aristocracy of the labor movement for 50 years. They would take control of the labor movement away from the less numerous skilled unionists. That is the revolutionary significance of Lewis in the labor movement.

U. C. T. DANCE SATURDAY

Indianapolis Council Arranges Event at Riviera Club

Announcement of a picnic and dance to be held by the Indianapolis Council No. 4, United Commercial Travelers of America Saturday at the Riviera Club was made today by E. H. Wehmer, chairman. The program is to include games, contests, swimming and a basket dinner.

Three States Hold Primaries; National Issues Not Involved

Missouri, Kansas and Virginia Voters Go to Polls as Prelude to Fall's General Political Warfare.

By United Press

Three states—Kansas, Missouri and Virginia—held primaries today that were preludes to this fall's general warfare on all political fronts. None had direct bearing on national issues.

Greatest interest centered on Republican and Democratic primaries in Kansas, home state of Gov. Alf M. Landon, Republican presidential nominee, to choose party candidates for state and congressional offices.

The control of Thomas J. Pendergast, Kansas City boss, over the Democratic state organization, was the basis of the campaign of candidates for both the Republican and Democratic gubernatorial nominations.

LOUISVILLE, Ky., Aug. 4.—United States Senator Marvel Mills Logan, Democrat seeking renomination, held a 3188-vote lead over his chief opponent, former Senator

KANSAS CITY, Mo., Aug. 4.—The issue of Pendergastism was the only one in today's Republican and

J. C. W. Beckham, as polls workers began counting the last ballots today.

Returns from 3937 out of 4296 precincts gave: Logan, 169,502; Beckham 166,314.

TOPEKA, Kas., Aug. 4.—The fight for the Democratic nominations for Governor and Senate held the chief interest in the Kansas primaries today.

Jonathan M. Davis, former Governor, sought the Democratic gubernatorial nomination against Walter Huxman, who is considered the New Deal candidate. Davis is a supporter of the Townsend pension plan, was unopposed for the Republican nomination.

Senator Arthur Capper had two opponents in the race for the Republican senatorial nomination, but was a heavy favorite.

Used Pianos

All Makes
Priced
From..... \$9
Witkins Music Co.
120 E. Ohio St.
LI-6144

Pearson's Account Opener!

TO OPEN UP 200 NEW ACCOUNTS

The MOST COMFORTABLE ROCKER

You Ever Sat in!

with the **\$5.95**
SPRING that
NEVER SAGS
NEVER WEARS
OUT—very
Special!



Hardwood
Frame!
Walnut
Finish!
High, Full-
Upholstered
Back!
Green
or Rust
Upholstering!

Easy Terms
No Carrying
Charge!

25c DOWN-50c A WEEK

OPEN FRIDAY and MONDAY EVENINGS — PHONE LI-4587

PEARSON'S FURNITURE STORE

CHICAGO JEWELRY'S

Summer Clearaway

Crepe Street
DRESSES
Whites—Pastels—Prints
\$2 and \$3
An amazing selection at this clearaway price! All wanted fabrics—tubular crepes, acetates, etc.
CLEARANCE! Pure Silk Slips—Tailored, lace trimmed..... 88c
CLEARANCE! Rayon Undies, Panties, Steepies, Briefs..... 19c

BUY NOW FOR SCHOOL!
Clearance Girls' Smart
Wash DRESSES
Sizes 2 to 16 Yrs.
Sheers and heavier fabrics—durable styles, many will be practical for school! See them tomorrow!
39c
BEACH SLACKS—Brown, white and navy..... 88c
COTTON FROCKS—All are fast colors..... 59c
POLO SHIRTS—For women; all colors..... 59c
CLOSEOUT! HATS—Straws and crepes..... 19c

Summer clearance men's white all-leather OXFORDS Cuban or rubber heels **\$1.98**
Boys' Polo SHIRTS, Zipper fronts—white, blue and white. Sizes 6 to 18..... 25c
Very Special! Boys' Suspender bag & JUMPEES, Sanforized shrunk longies or shorts, checks, stripes and solids. Sizes 2 to 12..... 49c
Close-Out of Men's POLO SHIRTS. Choice of white, blue and navy! Of fine quality—cotton & rayon. Each..... 29c
Choice of any men's STRAW HAT. Values \$1.00 to \$1.98. Out they go..... 50c

CHICAGO JEWELRY CO.
146 E. Wash. St.
Between Pennsylvania and Delaware Sts.

STAR STORE

BUY ON OUR TEN PAY PLAN
360 370 WEST WASHINGTON ST.

Store Hours
Daily 9 A. M.
to 5 P. M.
Saturday
9 A. M. to
9 P. M.

OUTSTANDING VALUES for

DOLLAR DAY

WEDNESDAY ONLY

75 Women's White COATS White Only ★ \$1 ★ Sizes 14 to 44 Second Floor.	150 Women's Better DRESSES Reduced for Clearance ★ \$1 ★ Broken Sizes 14 to 42 Second Floor.	Girls' 59c Pique DRESSES 3 for \$1 Sizes 7 to 14 Second Floor.
--	--	---

Women's Culottes and Slacks, \$1.00 Value..... 2 for
Child's Sun Suits, 29c and 59c Values..... 4 for
Girls' Print Pajamas..... 3 for
Child's 59c Sheer Print Dresses, Broken Sizes..... 4 for
Women's \$1.98 2-pc. and 3-pc. Culotte Sets..... 2-Fe. Are Ginger Rogers Style
70x80 Nashua Wool Mixed Blankets..... Each
36-Inch Panama Unbleached Muslin..... 16 yds.
19c 36-Inch Cloth of Gold Bleached Muslin..... 8 yds.
27-Inch Amoskeag Bleached Outing..... 12 yds.
12 1/2 39-Inch Bostonette Curtain Materials..... 12 yds.
15c 36-Inch Hope Bleached Muslin..... 10 yds.
52x52 Plaid Luncheon Cloths..... 3 for
Stamped Pepperell Pillowcases..... 2 Pairs
Women's Pure Silk Hose, Full Fashioned..... 3 Pairs
Women's Shadow Proof Taffeta Slips..... 2 for
5x8 Ft. Curtain Stretchers..... Rustproof Pins—Adjustable..... Each
Folding Yacht Chairs..... 2 for
6-Foot Wide Felt Base, Many Patterns..... 3 Sq. Yds.
Men's Shirts and Shorts..... 5 for
Men's C. B. Cones Work Shirts—UNION MADE..... 2 for
Men's \$1.98 Wash Slacks, Sanforized..... Pair
Boys' Dress Shirts, 50c Value..... 4 for
Men's Babe Ruth Union Suits..... 2 to 40—Others 25 to 35..... 2 for
Armand's or Luxor Face Powder with Perfume..... 3 for

Lux or LIFEBUOY SOAP 20 bars \$1 Limit 20 bars to a customer. None sold to dealers. Star Store—Street Floor.	Women's White Sports OXFORDS Also Sandals. Sizes 3 to 8. \$1.98 and \$1.69 Values. Dollar Day Only \$1 Star Store—Street Floor.	Men's Sanforized Coats — OR — PANTS Made of washable sanforized cloth. Sizes 34 to 42. Pants to match every coat. Limit 2 garments to a customer. Each..... Star Store—Street Floor.
--	--	--

32-Inch Kalamazoo DRESS GINGHAMS 200 patterns. All tub fast. Pinks, checks and plain colors. 13c Value. Star Store—Basement.	81x90 Unbleached FORT IDA SHEETS Made of heavy quality sheet- ing. Seamless. Will give long wear. 2 for \$1 Star Store—Basement.
---	--