

RUNNING FOR PRESIDENT JUST A ROUTINE ASSIGNMENT FOR ALF LONDON, AUTHOR FINDS

Kansas Executive Refuses to Become Excited
Over Prospects as Campaign Warms Up;
Wife 'Frightened' by All the Hubbub.

BY ARCH STEINEL

"Alf, I didn't know you were such a great man. I'm getting frightened."

On Page 229—the last page of the book, "This Man Landon" (Dodd, Mead & Co.), Frederick Palmer, lecturer, newspaper man, and war correspondent, criticizes his book on "The Man From Kansas," Alfred M. Landon, by putting these words in the mouth of the wife of the Sunflower state's Governor.

"I repeat that if this reads like a campaign biography, make the most of it, and the Governor of Kansas is to blame for it," says Mr. Palmer.

The book has forced itself on reading tables of the political-minded just as Gov. Landon has forced himself high in Republican minds as leading the race for the G. O. P. presidential nomination.

Between the opening page and the closing phrases on Page 229 a cinematic view is given of Gov. Landon.

He Takes It in Stride

Mr. Palmer goes to Topeka, Kas., to find out about "This Man Landon." He expects hubbub and "Landon-for-Governor" signs and finds "Where I had expected whoopee, there was no whoopee." Making a presidential candidate appear to be a part of the Kansas routine.

"I was told it was easy to meet Alf and that he is people," "Landon's face struck me as not being characteristic of a man who had been long in politics and public life. Landon's face might be that of a business man or business-like college dean who never had held public office. It was an open face that belonged with the open door."

... Mr. Palmer writes. The ante-room impression of Gov. Landon included a covert watch while he talked to politicians and an aged couple, former friends, who had been on relief. Gov. Landon gave the aged couple more time than the politicians.

The Politicians Like Him

"It seemed to me bad politics to have been so brief with the political leader. Later, I was convinced I knew nothing about politics when the political leader (one who had been given but a few moments with Landon) said to me, 'I like him. He sizes up fine. He'll make a good run if nominated.'"

The book brings Gov. Landon from his Pennsylvania Dutch ancestry and the family home in the Pennsylvania oil fields to Elba, O., where he was born. It takes him from the Marietta (O.) Academy to a home in Oklahoma, and later the Kansas oil fields.

Gov. Landon's father, a Teddy Roosevelt Republican, brought the boy Landon into the Bull Moose campaign.

At 25, he organized a county for the Progressives and carried it for them.

Fights Oil Corporations

His strippling conquest was stopped by his battle as an inde-

pendent oil producer to start the flow of small "stripper" wells into corporation-owned pipe lines. The corporations objected. Gov. Landon held the independents had the right to the use of the pipe lines as the lines were common carriers.

He won the fight. The 1932 campaign for the governorship, based on a platform of economy, found, according to the book, Landon ironing out party differences. Racing against the goat-gland expert, Dr. Brinkley, and Gov. Woodring, incumbent, he carried Kansas when Roosevelt was piling up a 74,000 plurality.

Operates on Cash Basis
As Governor, the Kansas G. O. P. hope put across a "cash basis" law of state, county and township government, despite opposition from all sides.

"The Landon plan for local governing bodies or taxing boards was as though the individual, at the beginning of the year, should have in hand the money he was to spend and spend no more except in dire emergency," says the book. "If there were any holes in the cash basis law introduced, it was not because able lawyers and Lawyer Landon himself failed to see them after it was drafted. It had the comprehensive dental spread of a steel-toothed comb."

Balked at Dam Project
He went along with the New Deal until they desired to construct a \$60,000,000 dam on Kaw River—a river with a channel at times no wider than Hoosierland's White River—and then the book reports he stopped like a balky horse.

He pointed out that \$5,000,000 spent for soil erosion through building farm terraces was more beneficial than \$60,000,000 in a dam that seaplanes could use as a landing field.

Would Avoid Disputes
Summing up his possibilities and capacities as President, Mr. Palmer says in brief:

"He would only be President. Under a Landon 'we' government it might happen that a pronouncement of policy would not come from the White House but from a Cabinet officer."

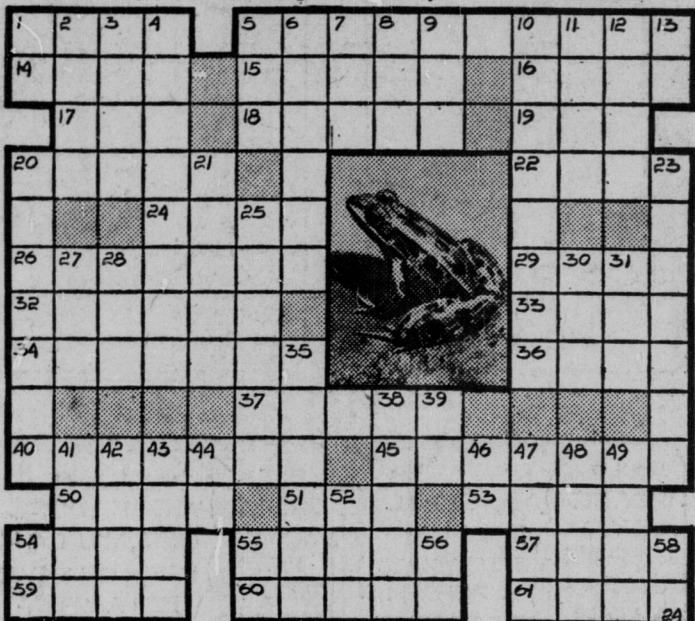
"If Landon were President, I am sure we should have fewer accidents in our daily news of presidential battles with the Congress. His method would be inductive instead of pedagogic."

Says He Would Balance Budget
"Landon appears to me to fill the bill for those who want a President who will not agree with the latest man he meets—who will be in the pocket of no group. It might be well to have a quiet President."

... Alf would balance the na-

HORIZONTAL Answer to Previous Puzzle

1 Grown-up tadpole. 5 It is a tallless (pl.). 14 Verse. 15 Glacier block. 16 Sketched. 17 Males. 18 Opposed to verse. 19 Circular fortification. 20 Narrow ways. 22 Devours. 24 To move up. 26 Covered avenues. 29 Bad. 32 Fancy pigeon. 33 River mud. 34 One that impedes. 36 Monkey. 37 Dirty. 40 Auto sheds. 45 Hole. 50 Composition for one voice. 51 Pussy. 53 Rubber wheel pad. 54 Bell sound. 55 The female lays her eggs in. 57 It feeds on insects and small. 59 It belongs to the genus. 60 Kind of fig. 61 Existence. 1 French. 2 Cleft. 3 Foretoken. 4 To propagate. 5 Snake. 6 Combines. 7 Golf teacher. 8 Possesses. 9 Frozen water. 10 Indolence. 11 Melody. 12 Bird's home. 13 Southwest. 20 It is a vertebrate. 21 Having sides. 22 Cross. 23 Calm. 27 Gypsy. 28 Mug. 30 By way or. 31 Kind. 35 Knave. 38 Clan symbol. 39 Year. 41 Toward sea. 42 Chestnut horse. 43 According to. 44 To depart. 46 Neuter pronoun. 47 Musical instrument. 48 Part of eye. 49 To assess. 52 Dined. 54 Pair. 55 You and I. 56 Note in scale. 58 Pronoun.



tional budget if Mrs. Landon had through administrative efficiency, to do her own work in the White through business efficiency, through House. The great saving would be economy of housekeeping."

\$5200 IS REALIZED FROM DOLL HOUSE

Riley Hospital to Get Sum
From Showing.

James Whitcomb Riley Memorial Association is to obtain approximately \$5200 from the two weeks local exhibit of Colleen Moore's doll house, Hugh McK. Landon, association president, said today. The money is to be used for improvements at Riley Hospital for Children. The doll house was viewed by

more than 56,000 persons here. Men and women outnumbered children. Mr. Landon and Frederic M. Ayres said "patrons showed that the Indianapolis public not only is appreciative of an original work of art, but is eager to lend its aid to the work Riley Hospital is doing."

BOGUS CLEANER HUNTED

Man Posing as Agent Gets Coat
From Local Woman.

A man who has been posing as an employee of a cleaning shop was the object of an organized search today. Mrs. Edna Lee, 617 E. 2nd-st., gave the man a \$15 coat to be cleaned yesterday. Police said several such cases have been reported recently.

ARE YOU INTERESTED IN A BETTER JOB?

PLYMOUTH MOTOR CORPORATION
OFFERS AN OPPORTUNITY

This advertisement is addressed not only to men with selling experience but to men who have never had a proper chance to find out if they could sell.

Applicants chosen by us will be given a new type of training in automobile salesmanship. A complete course produced by the industry's foremost merchandising men.

Sessions of this school will be held in the evenings for the convenience of applicants who now have employment.

Upon completion of the training course, those men who in our opinion measure up to requirements will be placed in the employ of local Plymouth dealers.

If you are in a rut and would like to get out... If you are chained to a desk... If you feel that you are on a treadmill getting nowhere... If you think you would like to grow with Plymouth

Apply in person at Room 731, Lincoln Hotel, Thursday, Friday and Saturday, from 9:00 A. M. to 9 P. M. Ask for Mr. Curtis, PLYMOUTH DIVISION OF CHRYSLER CORPORATION.

PENNSYLVANIA RAILROAD

Announces

important new service
improvements effective
April 26

To New York
THE AMERICAN

Faster... with 20 minutes
earlier arrival in New York

Lv. Indianapolis... 1:37 P. M. (C. S. T.)
Ar. New York... 8:30 A. M. (D. S. T.)
Also fast, through daily service on "Spirit of St. Louis,"
The Pennsylvania Limited, The Gotham Limited,
Mercantile Express.

To Chicago
THE KENTUCKIAN

50 minutes earlier arrival in Chicago

Lv. Indianapolis... 1:37 P. M. (C. S. T.)
Ar. Chicago... 8:00 A. M. (E. S. T.)
For full information, reservations, etc., consult new
timetables, or F. M. WARE, Division Passenger Agent,
Railway Exchange Bldg., Phone Riley 9331.

Speed
Safety
Comfort

PENNSYLVANIA RAILROAD

LARGEST FLEET OF AIR-CONDITIONED TRAINS IN THE WORLD

TRY A WANT AD IN THE TIMES THEY WILL BRING RESULTS

THE GIFT STORE FOR BRIDES AND GRADUATES



15-DIAMOND RING

IF YOU LIVE
ANYWHERE IN INDIANA
YOUR CHARGE IS GOOD
AT ROGERS

\$49.50

\$1.00 DOWN—\$1.00 A WEEK

No Interest—No Carrying Charge

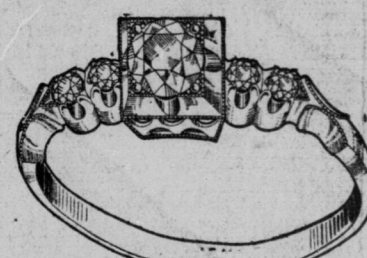


MARQUISE SHAPED
15-DIAMOND RING

\$29.75

50c DOWN—50c A WEEK

No Interest—No Carrying Charge



GORGEOUS DIAMOND RING

\$100

2.00 DOWN—2.00 A WEEK

No Interest—No Carrying Charge

Positively the smartest
ring creation you've ever
seen at this sensation-
al low price. Yellow or
white gold.

50c DOWN—50c A WEEK

No Interest—No Carrying Charge

For Luck in Love!

WEAR

"Flower of the Month"

DIAMOND

BRIDAL RINGS

Perfectly-Matched Set

A beautiful, perfectly
matched 10-Diamond
bridal set featuring the
"Honeysuckle" motif for
June weddings, anniversaries
or birthdays. Created in
white or yellow gold.

BOTH RINGS

\$16.00

50c WEEKLY.

Ask to See "Flower of the Month"

Diamond Rings For Every Month

TAKE YOUR PURCHASE
RIGHT ALONG WITH YOU

LEADING WATCHES OF THE WORLD

Choose From Rogers Tremendous Selection of Nationally
Advertised Watches on Rogers Easy Terms.
No Interest and No Carrying Charge!

GRUEN

ELGIN



50c DOWN 50c A WEEK

Remarkable value! Gruen accuracy!
Exquisite baguette case. Easy terms... \$24.75

Man's Gruen, new 1936 round
model. Yellow gold finished case
with band to match... \$24.75

Man's handsome, 15-jewel model.
Black dial. Yellow gold
hands and numerals... \$42.50

HAMILTON

EASY TERMS NO INTEREST

17 Jewels. White or yellow gold-
filled case. Clever... \$40.00

Lowest Hamilton price for man's
watch. Yellow gold
filled. 17 jewels... \$37.50

14-K yellow-gold-filled case. 17
jewels. Raised gold in-
dex figures. Pay weekly... \$55.00

BULOVA

50c DOWN 50c A WEEK

Elgin natural yellow gold case.
Complete with
band... \$21.00

17 Jewels. 14-K, yellow or white
gold filled. Black
enamel case... \$45.00

Elgin's supreme value for men!
Popular shaped yellow gold model
with band... \$23.75

BULOVA

50c DOWN 50c A WEEK

Ladies' baguette, 1936 fashion.
Gold figured dial.
White or yellow case... \$24.75

Bulova's most popular model for
men. 15 jewels. Yellow gold
case. Bracelet to
match... \$33.75

Narrow yellow gold-filled case. As
illustrated. Metal
band to match... \$29.75

SOLID GOLD DIAMOND
CAMEO RING

Genuine imported double
headed cameo set with two
genuine diamonds in a solid
gold mounting.
50c Down—50c a Week

\$8.95

ROGERS—A Step
AHEAD
In Quality
A Step
BEHIND
In Price—

ROGERS Philco Radios

Newest Models on Easy Terms
Immediate Delivery

PHILCO
Superheterodyne

Long and Short Wave Complete—No Extras
\$20

25c Down Delivers
50c Weekly

A Big Value—Just Plug In

A fine Philco for home or office. 4 Philco high-efficiency tubes—
Special Philco dynamic speaker—Philco simplified tuning—Illumi-
nated dial—and has a beautiful cabinet.

Long and Short Wave

Philco Midget

\$25

Complete—No Extras

25c Down 75c Weekly

No Installation—Just Plug In

Superheterodyne

Large Dynamic Speaker

Fine Tone—Selective

Genuine Philco Tubes

Illuminated Dial

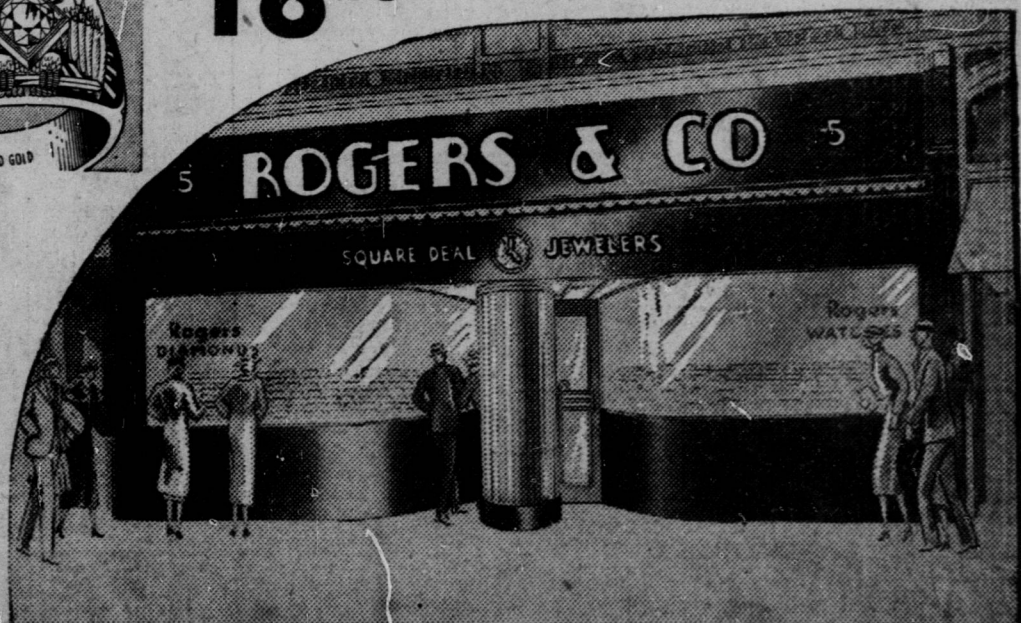
Large selection of the latest model Philco Radios at the
nationally advertised cash prices on our confidential and
easy credit plan.

Large Selection Philco Radios on Easy Credit Terms

Rogers & Co.

Square Deal Jewelers

5 NORTH ILLINOIS ST.



5 N. ILLINOIS ST.