

LOYALTY, ILLS OF WORLD ARE SERMON TOPICS

Bishop Francis, Rev. Trinkle Speak at Noonday Services.

"Loyal or Disloyal," was the subject of a sermon by Bishop Joseph Marshall Francis, of the Indianapolis Episcopal diocese, today at the noon services in Christ Church. Using as his text Luke 22:34, concerning the betrayal of Christ by Judas, Bishop Francis said: "No one is more despised than a traitor. The name Judas has become a synonym for the expression of our feelings of disgust and abhorrence with disloyalty. Christ called Judas as He did the other disciples. He entrusted him with the common purse of his intimate followers. He admitted him into the closest fellowship that existed between Him and His chosen companions. "And for all this, Judas betrayed his Master and friend. He was not wholly bad. In fact, no one is. Christ saw in him something that was capable of high development. But Judas had a besetting sin, avarice."

Service at English's Noonday services also were conducted at English's Theater, where the Rev. O. A. Trinkle, pastor of Englewood Christian Church, used as his text "The Remedy for a Bewildered World."

In his sermon the Rev. Trinkle said, "We are celebrating the events of the last days of our Lord preceding His death. While 1906 years removed in time, yet those events have a potency for life today. "Jesus looked upon a bewildered world, a world that was lost in a very real sense."

World Still Bewildered "Today we are living in a bewildered world. Men and women are trying every panacea for our ills. The world is unsettled and just as unstable. The peace of the world is in jeopardy. With all the talk of social security, human society is still insecure. "Man has tried salvation by his own efforts. Education, culture, environment, refinement and social prestige have not saved us. The Gospel of our Lord Jesus Christ is the only thing that will."

CLASSICAL HONORARY SORORITY INITIATES 13

Indianapolis Girl Among Latin and Greek Students Elected.

BLOOMINGTON, April 8. — Names of 13 Indiana University co-eds initiated into Eta Sigma Phi, classical honorary sorority for Latin and Greek students, were announced here today. The group included Misses Frances McCallan, Indianapolis; Mary Eunice Hodges, Martinsville; Frances Harding, Ellettsville; Frances Howe and Pauline Sever, Waldron; Waneta Helms, Centerville; Louise Rich, Edwardsport; and Mary Eleanor Schell, Bloomington.

STATE TAX BOARD SUED

Telephone Corporation Seeks Injunction Against Body.

Suit for a declaratory judgment and injunction against the State Board of Tax Commissioners, Public Service Commission and the State Department of the Treasury, is on file today in Superior Court. The action brought by the Indiana Associated Telephone Corp. alleges that the state is attempting to collect illegally \$7500 in intangibles tax on a \$3,000,000 bond issue sold by the corporation and that the state is not entitled to collect the tax.

HEARST OPENS ATTACK

Charges 'Secretive' Methods to Lobby Probers in Suit.

WASHINGTON, April 8.—Attorneys for William Randolph Hearst charged in the District of Columbia Supreme Court today that the Senate lobby committee proceeded in "stealthy and secretive ways" to seize private messages and papers of hundreds of citizens.

Proper Attention and Correct Food Will Produce Thriving, Lovely Lawn

This is the third of six articles on decorative gardening, in line with the preceding series on vegetable gardening.

BY PROF. H. R. COX
Extension Service Agronomist, New Jersey College of Agriculture and Experiment Station, Rutgers University.

UNLESS your ground is excavated soil or subsoil, it should, with care, support a thriving lawn.

Plant systems sicken on a too acid soil, and if lime has not been applied for some years, soil acidity may be at the bottom of your lawn troubles. Application of from 25 to 50 pounds of a liming material to 1000 square feet of lawn once every four years is good practice. Such application, evenly made, should correct unfavorable acid soil condition. Early spring and late summer applications of fertilizer assure a plentiful supply of plant food. A mixed or complete fertilizer having a 6-6-5, 5-10-5, or 5-8-7 analysis, when applied evenly and at the rate of 15 to 20 pounds to 1000 square feet, should make an average lawn good and a good lawn better.

Dr. Cox

If the sod has a fair stand of the desirable lawn grasses and clovers, there is no need for reseeding. With proper lime and fertilizer treatment and with proper mowing and watering during the growing season, the grass should thicken and eventually produce a solid turf.

However, it is well to reseed any bare patches in a lawn. Loosening the soil with a grub hoe, breaking up the clods and then raking the surface, will produce a firm and fine seedbed. Scatter the seed, rake in very lightly, and then roll or tamp to make firm the surface.

Sometimes the cultivated grasses are so thin that general reseeding is desirable. The simplest procedure then is to scatter the seed, rake the surface lightly with a fine toothed garden rake, and roll.

Better results usually may be had, however, by first scattering a top dressing of good soil to a depth of a quarter inch, and then working it down by raking or by dragging a metal doormat or similar tool over the surface.

On this excellent seedbed, grass seed is then sown, raked in lightly, and rolled. While the young seedlings are becoming established, water them lightly during dry periods with a fine, mist-like spray.

FERTILIZING and reseeding are done to best advantage in very early spring, about the time the lawn starts turning green. Late spring fertilizing is apt to stimulate crabgrass and other lawn weeds more than it does the cultivated grasses.

Postpone the first spring mowing until the grass is at least two inches long, to stimulate vigorous root growth. After that the lawn may be mowed frequently as desired, provided the height of cut is one inch or longer.

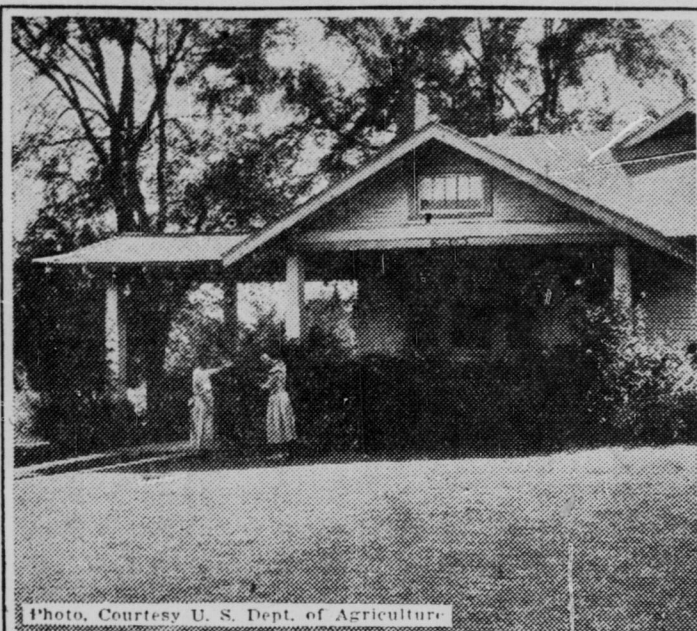
During dry periods you need not water often, but do it thoroughly. An occasional thorough soaking of the soil to a depth of three or four inches will tend to make the grass roots grow deeply.

NEXT—Foundation planting.

BACK HOME AGAIN

Stolen automobiles recovered by police belong to:
Druery Britt, 1162 English-av, Dodge truck, found at 1200 Spann-av.
Thirtieth and Central-Sales Co., Chevrolet roadster, found at 309 Patterson-st.
J. L. Slutsky, 401 Harvard-st, Chevrolet coach, found at 400 N. Talbot-av.
Robert McRobert, Graham Hotel, Bloomington, Ind., Chevrolet coupe, found at Noblesville, Ind.
Cecil T. Rice, 52 N. Anderson-rd, Chevrolet coach, found at Ritter-av and Pleasant Run-blvd.

Glasses on Credit!
Low Prices. Efficient Service. Consult DR. J. W. FARRIS, Registered Optometrist at H. H. MAYER, Inc.
Credit Jewelers 42 W. WASHINGTON.



A well-kept lawn adds to the attractiveness of any home.



Too bad you can't see underground, to tell how your lawn is growing. Specimen at left shows how deeply rooted becomes grass that has been well watered and properly cut, as against grass, at right, that was cut too close and insufficiently watered.

SPENCER UNOPPOSED AS PARTY CANDIDATE

Ernest E. Dillon Withdraws From Prosecutor's Race.

Prosecutor Herbert M. Spencer today faced the Democratic primary May 5 unopposed. Ernest E. Dillon, 701 Railway Exchange Building, the only other candidate, withdrew his declaration of candidacy with Secretary of State August Mueller.

Mr. Dillon in announcing his retirement from the race said: "My sole thought in withdrawing has been harmony in the party. Al-

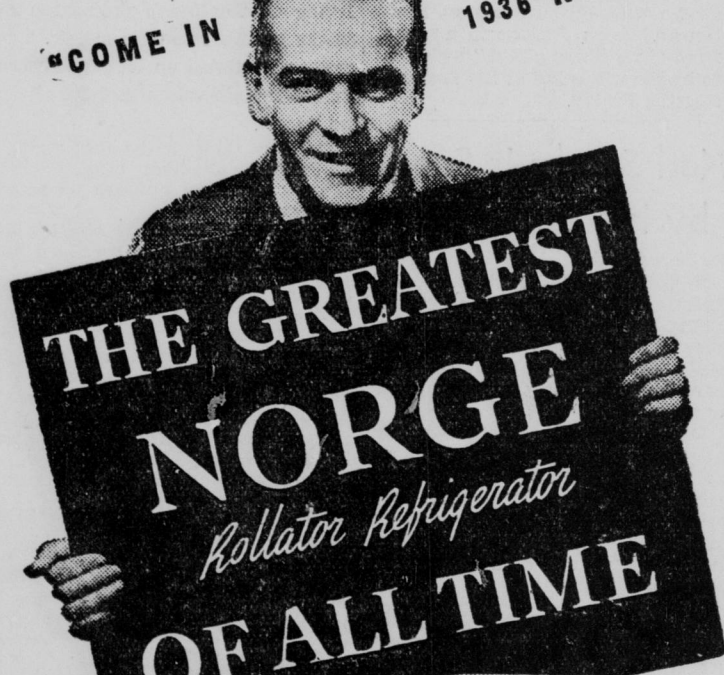
though I heard that an investigation was being made of my petition for the office, I contend that all he 587 names on the petition were valid."

Mr. Spencer, when asked about the investigation, had no comments to make.

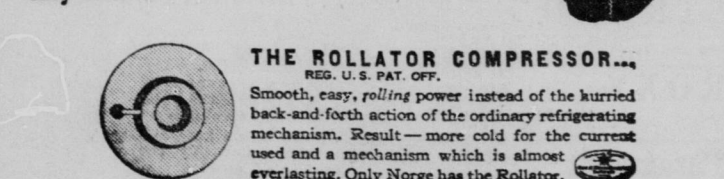
See New 1936 Cabinet Model
Speed Queen
Electric Washer with
Safety-Roll Winger
an exclusive feature.
Vonnegut's
120 E. Washington.

Banner Whitehill
Invites You—

"COME IN AND SEE THE 1936 NORGE"



• Never before have we been able to offer you such amazing values. Norge—proved by every test, approved by every owner, is now improved in every part. New beauty, new conveniences, new features, even higher efficiency of operation make the 1936 Norge the outstanding Rollator Refrigerator of all time. Come in. Ask us about the sensationally easy terms.



THE ROLLATOR COMPRESSOR...
REG. U.S. PAT. OFF.
Smooth, easy, rolling power instead of the hurried back-and-forth action of the ordinary refrigerating mechanism. Result—more cold for the current used and a mechanism which is almost everlasting. Only Norge has the Rollator.

Priced as low as \$99.50

Liberal Allowance for Your Old Ice Box

Store Open Monday and Friday Nights—7 to 9:30
Banner Whitehill
31-35 S. Meridian St.



9x12 Seamless Axminster Rugs

Have you ever stopped to think what tremendous "furnishing power" the rugs on your floors have? Next to the walls, the rug is the largest expanse of color or pattern in your room. In these all-wool, heavy Axminsters we offer you exceptionally well-designed and colored modern or Early American designs which will lend real charm to your rooms.

\$25

\$1 Down Delivers One of These Rugs!

9x12 Seamless Jacquard Wool Wiltons
Persian designs in new spring colorings. These rugs are easy to clean ... **\$44.95**

9x15 Plain or Figured Broadloom Rugs
For that larger sized living room. Lovely decorative colorings. Tailored ends... **\$37.50**

11.3x12 Seamless Lustre Type Rugs
All-wool nap rugs for that extra large room. Heavily tailored ends ... **\$35.95**

Inlaid Treadlite Linoleum
Patterns for kitchen or bathrooms. Will not wear off. Installed including cementing to the floor. Sq. yd. **\$1.59**

6x9 Bordered Felt Base Rugs
Every rug perfect. Selection of designs **\$2.29**

6x9 Porch Rugs
Gayly colored stencilled designs and bound edges. **\$1.69**

BLOCK'S—Fifth Floor.

The Wm. H. Block Co. and Congoleum-Nairn, Inc., present
Miss Alice Beeson Ecker from New York City
Miss Ecker is a widely known writer and counselor on Home Decorations, who will be in this store during the entire week of April 6 to consult with you on your home-decorating problems.
BLOCK'S—Fifth Floor

Spring Sale DRAPERIES



2 1/2 Yds. Long; Pair, 86-In. Wide

RUFFLED CURTAINS

Festive and fresh as daffodils in spring, are these ready-to-hang flounce bottom and ruffled curtains. Sheer colored figure marisettes; large and small dots on ivory or ecru backgrounds.

Pair—
Tailored Lace Panels, Each
Each 54" wide and 2 1/2 yards long. Open mesh nets! tailored hems. **\$1.59**

Tailored Lace Curtains, Pair
Sheer nets that will launder. Border designs. 2 1/4 yards long. **\$1.29**

Tailored Marisette Curtains
Plaids and open mesh nets. The sides have wide hems. 2 1/2 yards long. Pair. **95c**

Kirsch Swinging Rods, Each
Extend to 24 inches. Complete with rings and heavy brackets. **39c**

50c Slip Cover or Porch Covering
Neat plaid designs. Heavy, closely-woven materials. Yard **29c**

45c to 59c Waverly Drapery Chintz
Large and small floral and conventional designs. For drapes, bedsets and slip covers. Yard **35c**

BLOCK'S—Fifth Floor

Have You Seen the Finnish Art Exhibit on Block's Fifth Floor? No Admission Charge.

Another Sensation
The Famous Nationally-Known Brand New 1936 Model "Zenith"
Electric Vacuum SWEEPER \$19.85
Daringly Low Priced at—

Relieve yourself of cleaning worries. The positive action Vibro-Sweep motor-driven brush is another reason that you should select a "Zenith Vac."

Must not be confused with rebuilt sweepers now on the market.

Cleans by a 5-lb. sweeping action.

Quiet. A smooth, noiseless motor.

One way dust trap. Bag easily secured.

Motor-driven beater brush.

Cleans Close to Baseboard

Easy running rear wheel. No tipping.

Bumper Band Protects Furniture

Only **35c Down!**

Sold for Cash. None Sold to Dealers!

MILLER JEWELRY CO.
29 ON THE CIRCLE 2 Doors From Power & Light Co.