

See Page 11 for More  
Capacity Day News

# CAPACITY DAYS

If You Just  
Can't Come  
**ORDER**  
by MAIL or  
PHONE  
RI. 9441!

**THURSDAY  
FRIDAY  
SATURDAY**

**RADICALLY REDUCED!**

**500 Smart 'Tween-Season  
DRESSES**

2 for  
\$7

**\$3.69**

2 for  
\$7



**To Wear Right Now and This Spring! Prints!  
Redingote Effects! Navy! Black! High Shades!**

Don't wait another minute to get that new dress you've been talking to your friends about! For Capacity Days offer you a tremendous savings on new, fashion-right dresses you can wear right now and through the spring season. A variety of prints in every color and description. Navy blues and blacks with lingerie touches. Bright, soft colored pastels for wear under your winter coat and lots of those redingote effects that no smart wardrobe will be without. Sizes for women, misses and the Junior-Miss.

**These Styles:**

Redingote Effects	For Office
Prints	For Business
Pastels	For Campus
Black	For Street
Navy	For Bridge
Stripes	For Afternoon
	For Shopping

**Sizes:**

14 to 20
38 to 44
46 to 52
11 to 19

**These Colors:**

Black	Red
Florals	Green
Navy	Black
Brown	Gray
Blue	Wine
Turquoise	Aquamarine
Two-tones	Pastels

**CAPACITY DAYS** mean savings for You! Capacity Days, as your past experience will tell you, offer such extraordinary values that our big wide aisles will be **PACKED** to **CAPACITY** by thrifty folks, such as you, who are seeking to outfit their families and homes for spring! Every department is packed with **NEW SPRING** fashions—of Ayres quality—at the lowest possible price! Come early—regardless of weather! Doors open at 9:30 A. M.

**Women's Coats . . \$14.95**

Fur-trimmed winter coats in sizes 14 to 46 but broken. Smart styles with your favorite fur trim. Black, brown, green. Limited.

**Fur-Trimmed Coats, \$7.95**

Limited quantity. Sizes 14 to 42, but broken. Black, brown fabrics with smart lines. Warmly lined.

**Sports Coats . . . \$12.95**

Women's and misses' sizes 14 to 20, broken. Dark shades of brown and mixtures. Checks, plains and other weaves.

**Spring Neckwear . . 50c**

New spring styles in taffeta, crepe, pique and lace. White, pink, maize or blue colors.

**Women's Pajamas . . 79c**

Two-piece balbrigan pajamas with V or round necks. Short sleeve. 2-color combinations. Sizes 16 to 19.

**Silk "Pettiskirts" . . 89c**

Pure silk crepe wrap around style with button at waist. White or tea-rose. Irregulars.

**"Taffaswish" Slips . . 89c**

"Taffaswish" is a durable rayon fabric. High shades in sizes 34 to 44. Plain tailored, bias cut.

**Flannelette Pajamas, 89c**

Stout sizes in two-piece flannelette. V necks, long sleeves. Green and tea-rose. Sizes 18 to 20.

**Muslin Slips, 3 for \$1.00**

Straight bodice top, hemstitched and narrow hems. In white only. Sizes 36 to 52 in group.

**Silk Crepe Slips . . \$1.00**

Pure silk in lace trimmed or tailored styles. California V or straight tops. Tea-rose, white. Sizes 34 to 44.

**Porto Rican Gowns . . 50c**

Plain Porto Rican gowns or printed batiste hand applique with contrasting color trim. Sizes 16 and 17.

**Rayon Gowns . . . . 50c**

V or round neck styles. Lace or contrasting color trimmed. Irregulars. Sizes 16 and 17.

**Bemberg Combinations, \$1**

Have the fitted bandeaux, band or flare at knee and side fastening. Tea-rose. Sizes 32 to 42.

**Rayon "Pettiskirts" . 69c**

Panel front style with latex band at waist. Irregulars.

**Union Suits . . . . 50c**

Women's combed cotton suits with tight knee or closed crotch style. Reinforced. Irregulars, 36 to 50.

**Women's Vests . . . 19c**

Cotton knit vests with built-up shoulders, band finish. Drawstring. Irregulars. Sizes 34-44.

**Rayon Undies . . 19c ea.**

Women's plain rayon panties, step-ins, bloomers or vests. Elastic at waist. Tailored hems. Regular and extra sizes.

**Women's Undies, 3 for \$1**

Well tailored rayon panties, step-ins, bloomers, chemise or vests. Plain fronts, elastic backs. Regular and extra sizes.

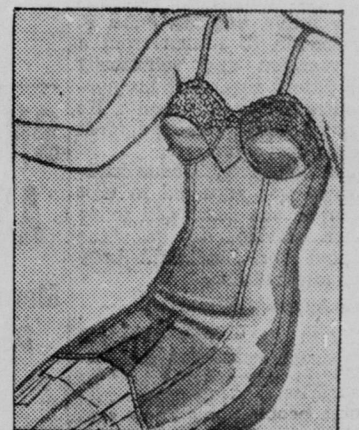
**Capacity Days Sale!**

**Kabo Foundations  
\$1.98**

Salesmen's samples and discontinued lines of our famous Kabo brand corsets and girdles. Mused and slightly soiled from handling. Most every size but not every style.

**Kabo Brassieres . . . 39c ea.**

Discontinued styles and salesmen's samples. Lace uplift styles. Not every size.



**Sample Sale**

**Spring Hats**

Special at **\$2.00**

The sale you wait for because the styles are always new and smart. The savings tremendous. Workroom samples from the rooms of a famous milliner. A great assortment of styles. Colors: Black, brown, navy, pastels.



**Capacity Days Sale!**

Our Entire Stock of  
**"Corliss" Shoes**  
Reduced to **\$2.69 PAIR**

All the very latest styles in pumps, straps, oxfords in navy, black or brown kid and patent. Arch types, style types and our Junior Corliss styles included. Sizes 3 to 9, widths AAA to C.



**Capacity Days Sale!**

**Spring BAGS  
89c**

All new styles specially purchased and priced for this sale. Pouches, envelopes, underarm and handle styles in simulated leather. Black, brown, navy, green and British tan.

**Spring Neckwear . . . . 89c**

New styles in crepes, laces, organdy and pique. High or V necklines. Pink or white.



**Capacity Days Sale!**

**Silk Undies  
69c**

Pure silk crepe chemise with California V or straight lace styles. 34 to 40. Dancettes have fitted bandeaux and lace trimmed panties. Sizes 32 to 36.



**Rayon Taffeta Slips . . . 50c**

California V or straight lace tops and hems. Sizes 34 to 40. Tea-rose and white.

**AYRES ★ DOWNSTAIRS ★ STORE**