

AUTOMOTIVE NEWS HIGHLIGHTS

CONDITIONS OF TODAY MET BY PLYMOUTH CAR

Line for 1935 Built for Safe Use at Modern High Speed.

Walter P. Chrysler announced the 1935 Plymouths last Friday as "revolutionary new-type high-speed safety cars, expressly designed to meet modern traffic conditions." The new cars are on display at all Indianapolis Chrysler, De Soto and Dodge dealers' showrooms.

Introduced in six beautiful body types the new Plymouths, streamlined in design, have added engineering developments which today, more than ever before, give emphasis to its claim of being America's best engineered low price car.

To quickly catalog the outstanding features of the new car, the 1935 Plymouth has an 82-horsepower engine with a compression ratio of 6.7 to 1; a torpedo-type all-steel safety body; synchro-silent transmission; a new ride achieved by a redistribution of weight, plus a new front spring assembly, floating power engine mountings and hydraulic brakes.

Mr. Chrysler, in announcing the new Plymouth, said that it was created to satisfy a critical need in America at the present time for safer transportation.

"Every indication points to more automobiles on the streets and highways in 1935, than at any time since 1929," he said. "And, the automobiles of today are much faster than those of six years ago. They also must be safer."

Safety Features Cited
Chrysler Motors engineers, pioneers in the development of such safety features as the all-steel body, hydraulic brakes and new principles of weight distribution, have perfected these safety factors in the new Plymouth.

The all-steel body of the 1935 Plymouth fits down over the double-drop X-type frame.

The body and frame are bolted together at 46 different points. Thus, the frame becomes a unit of the body along with the all-steel floor, side panels, center posts and other members. This design has permitted the engineers to build more room in the bodies. Plymouth seats are wider. The floor has been lowered 3 1/2 inches, providing a lower center of gravity and more leg and head room for the passengers.

The new Plymouth engine, with its unusually high compression ratio, includes three major engineering refinements to keep engine temperatures down and reduce gasoline and oil consumption.

The three major refinements are full-length water jackets, all-aluminum circulation and calibrated ignition.

Streamlined in Design
In the design of the new Plymouth, the engineers have applied their extensive study of aerodynamic principles. The Plymouth is streamlined to resist wind pressure in front and wind drag in the rear. The streamlined radiator, new headlamps and the general treatment of new front and styling—all combine to eliminate wind traps and flat surfaces. Authentic air-stream lines flow symmetrically back over the entire body structure to the tapering rear deck.

The Plymouth is presented in six body types—the Business Coupe, Two-door Sedan, Deluxe Rumble-Seat Coupe, Deluxe Four-door Sedan, Deluxe Two-door Touring Sedan and Deluxe Four-door Touring Sedan. All models have the same wheelbase, 113 inches, the same engine with floating power mountings, the same clutch, same transmission, same "floating ride" and the same hydraulic brakes.

PEDESTRIANS FAVORED

Supreme Court Rules Autos Out of Cross Walks.

A recent decision of the Supreme Court of Pennsylvania states that the cross walks at street intersections are owned by pedestrians, and that motorists are responsible and liable in case of accidents.

Graphite Sans Threads

When reassembling parts of an engine, a little graphite on the threaded parts subject to heat should not be overlooked. Graphite keeps the threads from fusing.

Crossing Toll

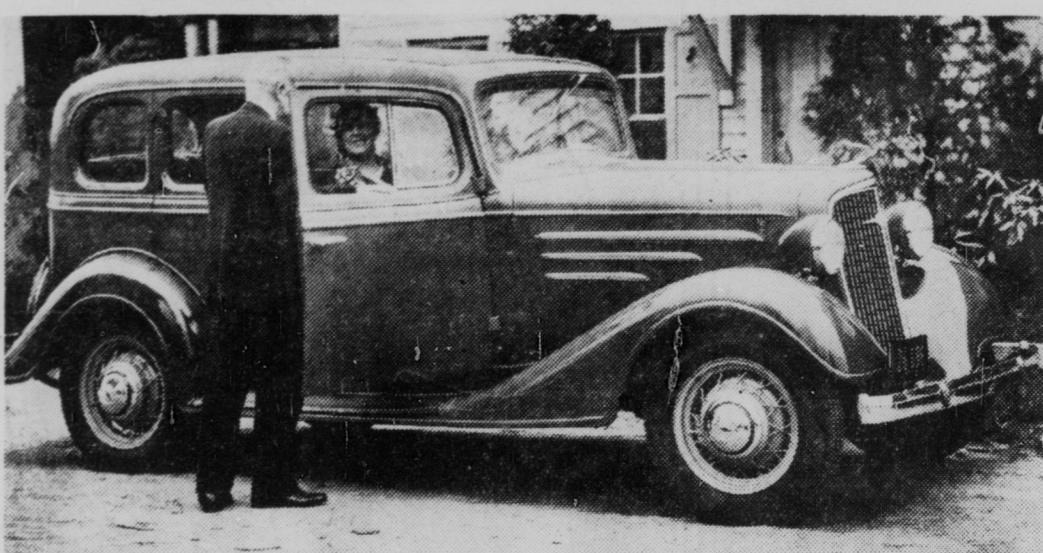
More than 92 per cent of all railroad highway crossing casualties in 1933 involved the operation of automobiles.

\$233,000,000 in Wages
In 1933, motor-vehicle factories of the United States paid more than \$233,000,000 in wages.

Leads in Women Drivers

The United States has more female auto drivers than any other country in the world.

CHEVROLET PRESENTS NEW 1935 STANDARD SERIES



The Chevrolet sedan model in the New Standard series, which, powered by the time-proved Master engine, combines brilliant performance with its smartness and style.

Six Models Presented in Chrysler Line for 1935

Both Airflow and Airstream Body Designs Available in New Cars.

The Chrysler line for 1935 will embrace six models. Four of these are of the Airflow type—the Airflow Eight, Airflow Imperial, Airflow Custom Imperial on a wheelbase of 137 inches, and the Airflow Custom Imperial on a wheelbase of 146 inches. The other cars, both of which are entirely new in the line are a six and an eight designated as the Airstream models. These cars which are displayed by the C. H. Wallerick Co., Inc., at 950 N. Meridian-st., local Chrysler distributor, are a modification of the Airflow in construction and replace the conventional models previously offered by Chrysler, additional proof that Chrysler believes the public accepts Airflow principles as fundamentally sound.

The Airflow Chrysler Eight engine has a bore of 3 1/2 inches and a stroke of 4 1/2 inches, with a piston displacement of 323.5 cubic inches. Developed horsepower is 115 at 3400 revolutions per minute. The Airflow Chrysler Eight comes in three body styles: Six-passenger sedan, a six-passenger coupe and business coupe. All three of these lists at \$1395, f. o. b. Detroit.

Priced at \$1675
The Airflow Chrysler Imperial has an eight-cylinder engine with a bore of 3 1/2 inches and a stroke of 4 1/2 inches, with a piston displacement of 323.5 cubic inches. Developed horsepower is 130 at 3400 revolutions per minute. The Airflow Chrysler Imperial comes in two body styles: Six-passenger sedan and six-passenger coupe, both models listing at \$1675, f. o. b. Detroit.

The 137-inch wheelbase Airflow Custom Imperial has an eight-cylinder engine with a bore of 3 1/2 inches and a stroke of 4 1/2 inches, with a piston displacement of 323.5 cubic inches. Developed horsepower is 130 at 3400 revolutions per minute. The Airflow Custom Imperial comes in two body styles: Sedan-limousine and six-passenger sedan. Prices will be announced later.

The 146-inch wheelbase Airflow Custom Imperial has an eight-cylinder engine with a bore of 3 1/2 inches and a stroke of 4 1/2 inches, with a piston displacement of 384.8 cubic inches. Developed horsepower is 150 at 3200 revolutions per minute. The 146-inch wheelbase Airflow Custom Imperial comes in two body styles, sedan-limousine and six-passenger sedan. Prices will be announced later.

Four Body Styles Offered
The Chrysler Airstream eight engine has a bore of 3 1/2 inches and a stroke of 4 1/2 inches, with a piston displacement of 273.8 cubic inches. Developed horsepower is 105. The Chrysler Airstream Eight comes in four body styles, four-door sedan at \$975; a four-door touring sedan at \$995; a touring brougham at \$960 and a rumble seat coup at \$935.

The Airstream Six has a six-cylinder engine with a bore of 3 1/2 inches and a stroke of 4 1/2 inches, with a piston displacement of 241.5 cubic inches. Developed horsepower is 93. The Airstream Six comes in five body styles: Four-door sedan at \$890; a four-door touring sedan at \$860; a two-door touring brougham at \$820; a rumble seat coup at \$810, and a business coupe at \$745.

The Airstream cars are declared by Chrysler engineers to be far superior in performance, comfort, beauty, ease of handling, ease of riding and economy of operation to any previous Chrysler of approximate price and size. They embody many of the principles of Airflow construction. In fact, they have been given full benefit of what Chrysler has learned from a year of experience with the Airflow and the assiduous research conducted by the Chrysler engineering staff.

710,000,000 Handled
During 1933, 710,000,000 passengers were handled in the 60,300 school buses which operate in the United States over 68,000 route miles.

AMERICA'S GREATEST REVUE!
10th Edition **ENGLISH**
MON., TUES., WED., JAN. 14, 15, 16

SEATS NOW!

Orch. \$2.75, Bal. \$2.20, \$1.65, \$1.10, Gal. 55c

EARL CARROLL VANITIES

Co. of 100 incl. Ken Murray (Comedy Star of Stage and Screen)

Chas Chase Eddie Rio Sammie Bros. Helen Charleston

Famous Earl Carroll Beauty Chorus

STAGED IN 45 SCENES

with Famous Earl Carroll Beauty Chorus

of

of

of

of

of

of

of

of

of

of

of

of

of

of

of

WESTERN AUTO TO ADD STORE

Supply Company Will Open New Branch Early in February.

Plans are under way to remodel the building at the southeast corner of Washington and Alabama-sts for another Western Auto Supply Co. store, according to J. I. Liebert, manager of this organization's present store at 363 N. Illinois-st.

From present indications the new store should be ready to make its formal debut on or about Feb. 1, he declared.

In line with the Western Auto expansion activities in Indianapolis this year is the announcement of plans for improvements of the present Illinois-st. store, which include new and larger display windows and rearranging of various departments and display counters.

BEST SALES TOTAL SINCE 1930 SHOWN

Sterling Truck Firm Reports Rise Continues.

By Times Special
MILWAUKEE, Wis., Jan. 10.—The sales record of the Sterling Motor Truck, Inc., in 1934 exceeded any since 1930 and there is more prospective business on hand now, officials report, than at any time in the last five years. Business at present is about 100 per cent ahead of what it was a year ago.

The firm has stepped up employment recently from 70 to 90 per cent and a few more of the old employees are expected to be called back soon. Working hours have been extended.

Business now being received comes from a wide variety of industries with credit standings of the firms ordering trucks reported as good.

NEW CODE OPERATING

Gasket Manufacturers Set-Up Approved by Board.

By Times Special
WASHINGTON, Jan. 10.—Approval of a supplementary code for the gasket manufacturing industry, a product group of the automotive parts and equipment manufacturing industry, has been announced by the National Industrial Recovery Board. It became effective Dec. 30.

Flames Blocked

A recently invented safety device prevents external flames from entering gas tanks and pipe lines and causing explosions.

Check Oil Filter

The oil filter should be checked frequently, even if it has been recently installed.

LAST DAY! JOAN CRAWFORD CLARK GABLE ROBERT MONTGOMERY "FORSYTH" ALL OTHERS

LOEW'S PALACE + 25c to 6

1935's First BIG MUSICAL! 8 Sparkling Sigmund Romberg Hits! Gay Comedy with Charles Butterworth! Young Lovers to Warm Your Heart!

NOVARRO EVELYN LAYE
IN VICKI BAUM'S GAY ROMANCE

"The Night Is Young"
M-G-M HIT
CHARLES BUTTERWORTH
UNA MERKEL - EDW. E. HORTON

Added Joy!
LAUREL & HARDY
"The Live Ghost"

Goddess of Spring!
Silly Symphony in Color!

CAST OF 487

25c 6 P. M.

PERFORMANCE OF CHEVROLET GIVEN STRESS

Engines of Same Size Used in Both Standard and De Luxe Models.

The new Chevrolet standard series cars made their first appearance at local dealers' display rooms last Friday, simultaneously with the national announcement by the Chevrolet Motor Company, feature high-powered performance and economy.

The 1935 Standard has been given virtually the same performance ability as the Master De Luxe which departs distinctly from previous Chevrolets in striking advances in design of body and trim.

The engines, incorporating many improvements over the 1934 Master motor, are of the same size and design in both models.

According to E. W. Berger, Indianapolis Chevrolet zone manager, mechanically the new standard series has numerous important improvements in construction and design. The engines have an original system of high pressure jets supplying oil to connecting rod bearings and electro-plated pistons, heavier crankshafts, and other new features contribute to better performance, smoothness and economy.

In the chassis, newly designed clutches, more effective breaking systems, stiffer frames and other advances in design give greater ease of operation, increased durability and a better ride.

New Standard Improvements

In the low-priced standard models larger bodies, a new engine with 23 per cent more horsepower, an improved chassis frame, and numerous other new features give improved performance, still better economy, and increased comfort and safety.

Bodies are generally improved in spaciousness and comfort, and possess many new convenience and appearance features. The newly added four-door sedan has the same dimensions as the coach, which is 3 1/2 inches longer than the 1934 model, and provides 2 1/2 inches more legroom in the rear compartment.

Prices Announced

Chevrolet's prices for the 1935 new standard models were announced by William E. Holler, general sales manager of the Chevrolet Motor Co., just before the opening of the New York automobile show. The prices are as follows: Coupe, \$475; coach, \$485; sedan, \$550; phaeton, \$560; roadster, \$465; and sedan delivery, \$515.

The prices on the new standard coupe, coach and phaeton are \$10 under those of the corresponding 1934 models.

PRAISE!
"BROADWAY BILL IS TOO GOOD TO BE MISSED!"
—Patrick, Star
"Biggest punch climax the screen has had in a long time!"
—Hickman, Times
"Thrilling as well as amusing!"
—Whitworth, News

INDIANA
EVERY PICTURE A HIT PICTURE!

WARNER MYRNA BAXTER LOY
A FRANK CAPRA Production
WALTER CONNOLLY HELEN VINSON

25c 6 P. M.
40c

Held Over!
Skill Going Strong...The People's Choice!!

WILL ROGERS
in George Ade's
"COUNTY CHAIRMAN"
with STEPIN FETCHIT
Evelyn Venable
Kent Taylor
Louise Dresser

25c 6 P. M.
Balcony 25c
Main Floor 40c

'Continental Varieties' Appears Here on Feb. 2

BY WALTER D. HICKMAN

THE current theatrical season took on added interest today with the announcement that the Indiana League of Women Voters, in association with Martens Concerts, Inc., will present "The Continental Varieties" at English's on Saturday night, Feb. 2.

This new type of revue was a hit at two places in New York this season. It opened at the Little Theater and when its run was concluded went to the Rainbow Room on the 65th floor of the Rockefeller Center.

The big name draw in New York was Lucienne Boyer, French singer, who took that town by storm and held it in her grasp for many weeks.

Miss Boyer will be with "The Continental Varieties" when it comes to English's as will be the other stars of the New York show. The chief dancers will be Vincente Escudero and young Carolina, a dancer he brought with him from Granada.

Raphael is acknowledged as the maestro of the concertina in Paris as well as New York. He and his concertina will be present here. Nikita Balleff who was last seen here with "Chauncey Soule" will be the master of ceremonies with this show, a position which increased his fame in New York.

In addition to these artists there will be a string quartet, Spanish guitar player and a pianist.

Civic to Present a Hit

THE Civic Theater is offering a special price of \$1 per person for parties of eight or more for its

METHODIST MINISTERS TAKE PEACE PLEDGE

Pennsylvania Groups Outline War.

Outline Three Policies.

By Times Press

PITTSBURGH, Jan. 10.—Methodist Episcopal Church ministers of the Pittsburgh and Erie districts have definitely outlawed war and today stood pledged neither to participate in nor lend moral support to any future conflict between nations, either defensively or offensively.

That pledge was taken by 44 ministers at the conclusion yesterday of a three-day seminar at Oakmont, sponsored by the General Conference Commission for World Peace.

They recommended three policies which they said would affect the future peace of nations. They asked non-aggression guarantees among all nations; governmental control of munitions industries and ultimate disarmament.

Thief Robs Delivery Wagon

While his Capitol Dairies delivery wagon was stopped at 37th and Meridian-sts early today, Ivy Gibson said a thief took \$11 cash and produce from it.

Plate Glass Window Smashed

Some one last night broke a plate glass show window at the Bland & Feeder Plumbing Supply Co., 1512 E. Washington-st. It was valued at \$108. Nothing was taken.

SPONSORS BILLS ON TEXT BOOKS

Senator Watson to Offer Three Measures; Rental Provided For.

Senator Chester K. Watson, Ft. Wayne, will introduce three bills in the General Assembly relating to the rental and adoption of school books in the grade and high schools of the state.

Multiple adoption of texts will be provided for in two of the bills. The proposed measure will give the State Board of Education the power to adopt four text books on each subject taught, and the local authorities will make their selections from these four.

In cities having a population of more than 2,500 the selection, according to the proposed bills, will be made by a school book commission consisting of the superintendent of schools and four teachers to be chosen by the School Board. In townships of less than 2,500 population the selections would be made by the county superintendent and four teachers to be named by the County Board of Education.

The State Board of Education at the end of five years time could drop the least used text book of the previous list. This would do away with the present system of changing text books every few years. The bill would provide that local boards could not change books as long as they were on the list approved by the state.

Another proposed measure provides that local school boards could buy text books and rent them to pupils at not more than 25 per cent of the wholesale cost of the books.

MOBS BOMB CAPITOL! PRESIDENT KIDNAPED! TERROR REIGNS IN WASHINGTON! MARTIAL LAW DECLARED!!

» » » Astounding events that paralyzed a nation seen through the eyes of two lovers whose romance trembled upon the brink of disaster while the news that the President had been kidnaped shook the world

PRESIDENT VANISHES
U.S. UNDER
"T H E PRESIDENT VANISHES"
TOMORROW!
With ARTHUR BYRON • EDWARD ARNOLD • PAUL KELLY • ANDY DEVINE • PEGGY CONKLIN
GINGER ROGERS FRANCIS LEDERER "ROMANCE IN MANHATTAN"

CIRCLE WHERE THE BIG PICTURES PLAY

PRESENTATIONS NEIGHBORHOOD THEATERS

NORTH SIDE	EAST SIDE
RITZ Illinois at 39th Double Feature "LIMEHOUSE BLUES" "ELINOR NORSTON"	PARKER 2930 E. Tenth St. Double Feature "HIS GREATEST FAMILY NITE" "INSIDE INFORMATION"
TALBOT "CARAVAN" "ONE EXCITING ADVENTURE"	HAMILTON 2116 E. 10th St. Double Feature "AFFAIRS OF CELINE" "WORLD MODS"
UPTOWN 2nd and College Double Feature "LOST LADY" "SCARLET LITTER"	ROXY 2321 E. Wash. St. Double Feature Wm. Foxwell "FASHIONS" "CITY LIMITS"
DREAM "GIFT OF GAB"	Hollywood 1500 Roosevelt. Lionel Barrymore "THIS SIDE OF HEAVEN"
Stratford 19th and College Double Feature Ricardo Cortez "HAT, COAT AND GLOVE" "LOVE TIME"	EMERSON 4630 E. Tenth. Double Feature Pat O'Brien "I SELL ANYTHING" "READY FOR LOVE"
MECCA Noble and Mass. Double Feature Spencer Tracy "BOTTOMS UP" "ONE MORE RIVER"	Paramount New Jer. & E. Wash. Double Feature Victor Jory "I'LL FIX IT"
GARRICK Illinois & 39th. Double Feature James Dunn "365 NIGHTS IN HOLLYWOOD" "LOVE LAST THIRTY"	SOUTH SIDE
R E X 30th & Northwestern Mary Boland "DOWN TO THEIR LAST YACHT"	FOUNTAIN SQUARE Double Feature Dick Powell "HAPPINESS AHEAD" "INSIDE INFORMATION"
ZARING Double Feature Helen Hayes "WHAT EVERY WOMAN KNOWS" "365 NIGHTS IN HOLLYWOOD"	SANDERS Prospect & Shelby Double Feature Lionel Atwill "BEGGARS IN FERMINE" "WASH. THE MODS"
ST. CLAIR St. Clair & Ft. Wayne Double Feature Warren William "CASE OF THE HOWLING DOG" "JEALOUSY"	GARFIELD 2303 Shelby Double Feature W. Fields "MRS. WIGGS OF THE CARRAGE PATCH" "WASH. THE MODS"
EAST SIDE	AVALON 1355 E. Wash. St. Double Feature Guy Kibbee "THERE AIN'T NO JUSTICE"
STRAND Aline McMahon "BIG HEARTED HERBERT"	ORIENTAL 1105 S. Meridian Double Feature Grace Moore "ONE NIGHT OF LOVE" "365 NIGHTS IN HOLLYWOOD"
RIVOLI "DANGEROUS CORNER"	ROosevelt "PERSUED" "TILL I SEE YOU"
IRVING 5507 E. Wash. St. Jackie Cooper "TICK'S BAD BOY"	BELMONT Family Nite Duke Moore "RICHEST GIRL IN THE WORLD" "SECRET OF THE HATEFUL"
TACOMA 2412 E. Wash. St. Claudette Colbert "CLEOPATRA"	DAISY 2303 Mich. Double Feature Lionel Atwill "ONE NIGHT OF LOVE" "BIG HEARTED HERBERT"
TUXEDO 4029 E. New York Double Feature Marlene Dietrich "SCARLET FEATHERS" "DESIRABLE"	STATE 2303 W. 10th St. Double Feature W. Fields "AMONG THE MISSING" "RICHEST GIRL IN THE WORLD"

RED NICHOLS
AND HIS
"World Famous Pennies"
Advance Ticket Sale
60c Incl. Tax Till 6
P. M. Night of Dance.

Tomorrow Night
Slim LaMar
and His Orchestra
8:30 Before 9 o'Clock

INDIANA ROOF BALLROOM

OHIO
SEE IT TODAY
Ronald Coleman
"Bulldog Drummond Strikes Back"
"GEO. WHITE'S SCANDALS"