

CONGRESSMEN HEAR TOWNSEND PANACEA

Pension Only Alternative to Revolt, He Says.

WASHINGTON, Jan. 4.—F. E. Townsend, a soft-spoken country doctor from the West, today prescribed his \$200-a-month Federal pension proposal as a remedy for many of the Nation's ills.

At an open House meeting for congressmen, the Long Beach (Cal.) physician proposed giving every person over 60 years of age a pension of \$200 a month as a means of ending hard times, stamping out crime and routing bootleggers.

"Twenty million people are demanding that Congress adopt my plan," Dr. Townsend said. "Heed their cry before a whirlwind revolution takes the country and bloodshed follows."

Rep. John Stevens McGroarty (D., Cal.), announced he would circulate a petition seeking 218 signatures necessary to force the bill embodying Townsend's "old age revolving pension plan" to a vote in the House. He had been informed, he

said, that the Administration opposes it.

Hindu Student to Lecture
Ranendra Kumar Das, Hindu student at the University of Cincinnati, O., will speak at 10:30 tomorrow at the Children's Museum. His topic will be "A Trip Through India With Me."

Spider Bites Film Star
LOS ANGELES, Jan. 4.—Warner Baxter remained under a physician's care today for treatment for a Black Widow spider bite.

What a Value!... What a Low Price! Guaranteed INNER-SPRING MATTRESS

Notwithstanding the fact that this mattress is priced very low it is made by a NATIONALLY KNOWN MANUFACTURER.

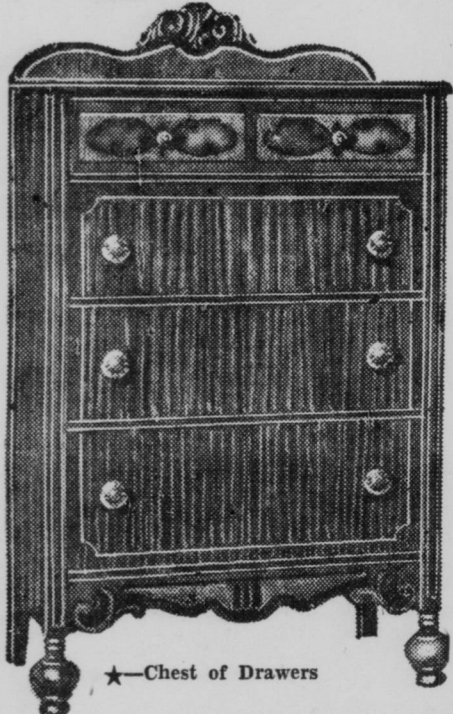
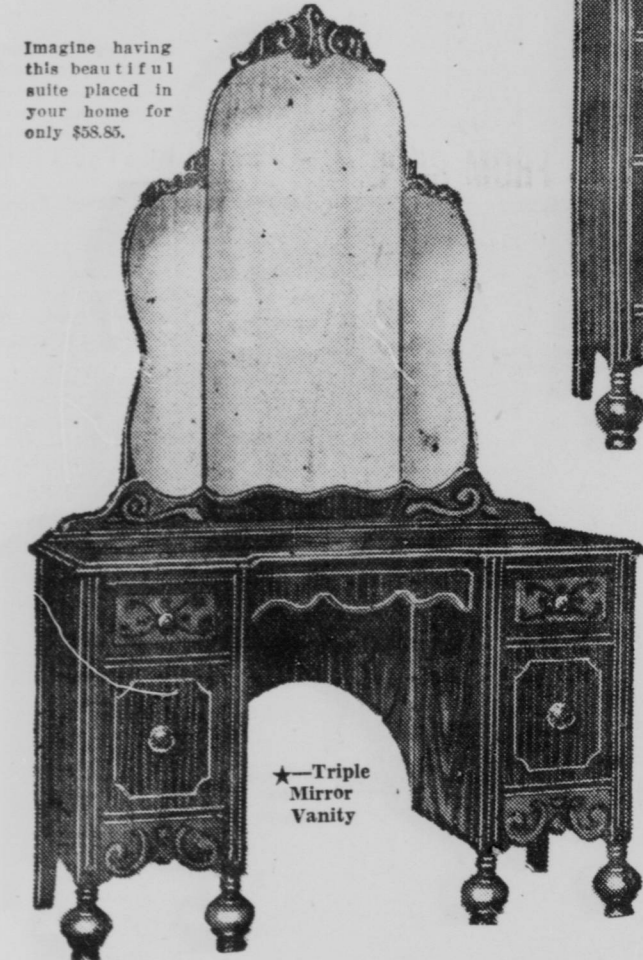
READ ABOUT THE MATTRESS... APPRECIATE THE VALUE OFFERED!—SEE IT! COMPARE IT!... and you'll realize that... "IT PAYS TO DEAL AT THE VICTOR."

Victor's guarantee is more than just idle chatter. Here's what you get....

- 1 All new clean material.
- 2 100 highly tempered coil springs. (No loss will give satisfaction.)
- 3 Durable... fresh... non-stretch ticking.
- 4 SATISFACTION TO YOU.

\$1.00 DOWN!

A Brand New Year
Why Not a Brand New Bedroom Suite?



3-PIECE
5-Ply Walnut
BEDROOM
SUITE

★ Bed ★ Chest
★ Triple Mirror Vanity

\$58.85

—Exactly as You See It Pictured—
—Suite May Also Be Had With 4-Post Bed

\$1 Per Week!

—No Interest—No Carrying Charges!



★—Handsome Bed



VICTOR FURNITURE CO.
231-237 W. Washington St.
Directly Opposite Statehouse

See it!... Compare it!... And you'll buy it!... Yes, indeed!

"It Pays to Deal at THE VICTOR"

LEADER'S January Clearance SAVE 25% to 50%

Women's SPORT and FUR-TRIMMED Winter COATS

Former Prices—\$14.95 to \$19.95
• Large Fur Collars
• Smartly Styled
• Heavy Barks
• Heavy Interlined
• Sizes 14 to 20 and 38 to 52
REDUCED TO—

WOMEN'S WINTER COATS
Former Prices \$6.95 to \$9.95
REDUCED TO ONLY—

WOMEN'S SPORT and RICHLY FURRED COATS
Former Prices \$19.95 to \$24.95
Lavish fur trimmed collars! Stunning styles! New barks! Sizes 14 to 20 and 38 to 52. Reduced to

WOMEN'S LUXURIOUSLY FURRED COATS
Former Prices \$25.95 to \$39.95
Fine barks and lovely novelty crepes. Blacks and browns. Heavily interlined. Sizes 14 to 20 and 38 to 52. Reduced to

CLEARANCE! GROUP NO. 1! Men's TROUSERS

This group consists of worsteds, French backs, cashmeres and moleskins. Ideal for work or dress. Full cut and tailored for hard wear. Medium and dark shades in brown and grays. Also extra heavy weight moleskins. Regular and slack models. Sizes 29 to 50. PAIR—

Group No. 2	Group No. 3	Group No. 4
908 Pair Work Pants Consists of moleskins, trojans, cotton worsteds, whipcords and serges. Well tailored. A large selection of patterns and colors. Sizes 29 to 42. PAIR—	375 Pair Corduroy SLACKS Hockmeyer and Crompton cords in regular and slack models. The popular shades, dark and navy blues. Sizes 29 to 42. PAIR—	411 Pair Men's All-Wool DRESS TROUSERS Consists of all-wool tweeds, cashmeres, chevrons, worsteds, including 50% wool French backs. Regular, slack and Hollywood models. The new shades of gray, brown and blue. Sizes 29 to 42. PAIR—
\$1.34	\$2.24	\$2.64

CLEARANCE OF 100 BOYS ALL-WOOL SUITS

Former \$7.98 to \$9.98
This group consists of prep, knicker and rugby suits. Some models pinch back. Not all sizes in each pattern but all sizes in the group. Prep suits in sizes 12 to 20. Knicker suits in sizes 6 to 14. Rugby suits in sizes 4 to 10. Counter soiled.

CLEARANCE! WOMEN'S Novelty FOOTWEAR PUMPS! STRAPS! TIES!

In black and brown kid and suede leathers. Not all sizes in each style, but all sizes, 4 to 8, in the lot. Cuban and high heel.

Reduced to, Pair—

Boys' and Girls' HI-SHOES Patent leathers and gun-metal. Sizes 8½ to 2. Reduced to Pair— 87c	Boys' Sturdy Hi-Cut Shoes Made of heavy pliable leather with composition soles and rubber heels. Sizes 11 to 6. PAIR— \$1.59	300 Pairs Women's Arch Support Footwear Open and closed toe styles only. Attractive black kids. Sizes 4 to 9. PAIR— \$1.47	MEN'S DRESS OXFORDS Bal or blucher style in black only. Narrow or wide toe styles. Composition soles and rubber heels. Sizes 6 to 11. PAIR— \$1.39
---	--	--	--

CLEARANCE! WOMEN'S DRESSES

Former Prices \$2.95 to \$4.95
WHILE 150 WILL LAST \$2
Sizes 14 to 20 and 38 to 50
REDUCED TO—

SILK DRESSES
Former Prices \$4.95 to \$7.95
Sizes 14 to 20 and 38 to 50
REDUCED TO—

Women's Pure Silk Chiffon Full-Fashioned HOSIERY

• 3rd Gradings of 69c to 89c Qualities
• Newest Fall Colors
• Picot Tops
• Some Service Weights
• Sizes 8½ to 10½
• The Greatest Hosiery Value in the City
PAIR—
29c

HARD MIXED CANDIES

12½c and 15c values. 50% Filled. Reduced for clearance. Main Floor
LB.—
7½c

Borax Laundry Soap

Large ½-Lb. bars of yellow laundry soap. Limit—Second Floor.
Bars
10 16c

Reg. 5c Toilet Tissue

"Greenwood" brand. First quality. Limit—Second Floor.
Rolls
4 11c

SAFETY MATCHES

Regular penny boxes of safety matches. Carton of Limit—2nd Floor.
Boxes
12 5c

27-INCH OUTING FLANNEL

White and blue checks, plaids and dark colors. Limit—Main Floor.
YARD—
7½c

MARQUETTE PANELS

29c value. 40 inches wide, 2¼ yards long. French marquette. Well made. Main Floor.
19c

HEAVY TURKISH TOWELS

Size 17x35. Large absorbent towels. Each—
Main Floor
7½c

Brook's SEWING THREAD

Black and white cotton thread in Nos. 40, 50 and 60. Limit.
Spools
3 5c

Cotton Double BLANKETS

Size 70x80. Gold, pink, blue, orchid and green plaids. Pair—
\$1.39

36-INCH BROADCLOTHS

In blue, pink, orchid, tan and white. On sale Thursday only. Yard—
10c

69c BED SHEETS

Double bed size, 72"x90". Soft bleached sheets, only
Main Floor
49c

15c PILLOWCASES

Size 42"x36" with wide hems. Bleached pillowcases.
Main Floor
11c

2-LB. COTTON BATTS

Unrolls to full comfort size, 72"x90 in. On sale Saturday—
Main Floor
22c

36-INCH UNBLEACHED MUSLIN

Heavy quality, for quilts, mattress covers, dish towels, etc. Full bolts. Yard—
6c

Blue Steel Razor Blades

Double-edge blue steel for Gillette type razors.
Limit—Main Floor
10 for 9c

19c RUBBING ALCOHOL

"York" brand, 70% alcohol. Large 16-ounce bottle. Limit—Main Floor
9c

Clearance! Costume Jewelry

Sample Rhinestone, Crystal and Gold Necklaces, Earrings, Bracelets, Pins, Clips, Rings, etc. Choice
Main Floor
10c

BOYS' ALL-WOOL KNICKERS

Novelty fabrics in a full lined knicker with knit grip bottoms. Former \$1.39 values. Counter soiled.
98c

Boys' BROADCLOTH SHIRTS

Seconds of 49c and 59c qualities in fancy and plain colors. Every shirt guaranteed fast color. Sizes 8 to 14 years.
29c

Men's 1st Quality Fancy Hose

Sizes 10 to 11½. Every pair fully guaranteed PR.—
8½c

WOMEN'S COTTON AND RAYON HOSIERY

Third gradings of 20c quality in fall shades. Part wool underhose included. Sizes 8½ to 10½. PAIR—
10c

69c, \$1.00 VALUES MEN'S DRESS GLOVES

Pile lined capskin with elastic wrists and unlined pig-grains and capskins. All sizes. Irregulars.
49c

LEADER DEPT. STORE DELAWARE & WASHINGTON