

POLITICS HELP I. U. DEAN TO N. E. A. BERTH

McNutt Aids Win in Bitter
Fight for National
Education Post.

BY DANIEL M. KIDNEY
Times Staff Writer

WASHINGTON, July 6.—Election of Dean Henry Lester Smith of Indiana university as president of the National Education Association was being credited here today as another victory for good old Hoosier politics and in a sense another triumph for the McNutt organization.

For Dean Smith, who had held the post of treasurer, faced the most bitter fight in a decade and had to defeat three other strong contenders.

But the best politico-educators in Indiana, most of whom now are a part of the regime of Governor Paul V. McNutt, were on hand to put Dean Smith across in the best convention technique—whether political party, American Legion or educational.

The list of these leaders includes:

McMurray Leads Fight

Floyd I. McMurray, McNutt-appointed state superintendent of public instruction; Robert B. Hougham, McNutt-appointed secretary of the Indiana teachers' retirement fund; Mrs. Margaret Afflis, Delphi, second district Democratic vice-chairman, township trustee and one of the trusted lieutenants of Pleas Greenlee, McNutt patronage secretary; George C. Cole, former state school superintendent appointed by McNutt to be business manager of the Terre Haute Normal school, and Lemuel A. Pittenger, who retains the presidency of Ball State Teachers' college under the McNutt regime.

Then, there also was Donald Dushane, Columbus superintendent, who rates along with Secretary C. O. Williams of the Indiana State Teachers' Association in being able to manipulate convention affairs.

Mr. Williams, who arranged Governor McNutt's various educational speaking tours, likewise was on hand.

Dean Smith, who heads the department of education at Indiana university, where Governor McNutt was dean of the law school, also is a McNutt appointee. He is a member of the commission appointed by the Governor to study curriculum in the four state schools.

Heads 1,000,000 Teachers

So the battle for Dean Smith against Joseph H. Saunders, Newport News, Va.; Orville C. Pratt, Spokane, Wash., and William H. Holmes, Mt. Vernon, N. Y., proved to be a Hoosier political field day. Many of the Indiana leaders voted were ex-officio and after the dean was elected the teachers passed a resolution that ex-officio votes will not count at conventions in the future.

But the present belonged to Indiana. Dean Smith is president of a group which represents 1,000,000 teachers throughout the United States, Alaska and other territories.

Some 7,000 attended the convention here.

KEY WEST IS 'BROKE,' CALLS FOR RECEIVERS

Federal Relief Official Urges City to
Go After Tourist Trade.

By United Press

KEY WEST, Fla., July 7.—Key West, once the largest city in Florida, was in the hands of a receiver today, awaiting an economic rejuvenation operation designed to make it the "Bermuda of Florida."

Gradual shippings away of industries and army and navy bases has diverted so much revenue from the city and county that public officials threw up their hands, calling in state and federal "liquidators."

"The thing to do is to make Key West so attractive as to revive tourist trade and bring back lost prosperity," said Julius F. Stone, federal relief administrator for Florida.

LUTEN TO GIVE TALK

'Cause of Depressions' to Be Topic
of Sciencetech Club.

"The Cause of Depressions" will be discussed by Daniel B. Luten at the luncheon of the Sciencetech Club at the Columbia Club, Monday. Mr. Luten, Sciencetech club member, has prepared for his talk by numerous conversations with Communists, Socialists and relief committee members.

Board Approves Paving of Alley

Paving of the first alley east of Lindwood avenue from Michigan street to a point six hundred feet south was approved by the works board yesterday. Estimated cost is \$3,400.

DRINK CRAZY Water Crystals

8:45 P. M. Tues. Times, Sat. 8:00 P. M. Mon. Wed. 11:45 P. M. Mon. W.W.W. Daily See Newspaper Schedule.

Real Estate Mortgages

WE SOLICIT APPLICATIONS FOR PREFERRED MORTGAGE LOANS ON CITY PROPERTY. INTEREST RATE 6%—NO COMMISSION.

THE INDIANA TRUST Company

CAPITAL SURPLUS \$2,060,000.00
THE OLDEST TRUST COMPANY IN INDIANA

Fletcher Ave. Savings & Loan Assn.

10 East Market St. Has Paid Dividends on Savings for 41 Years

LEADER OF MOOSE



William A. Anderson

New supreme prelate of the Loyal Order of Moose is William A. Anderson, 2525 Shelby street, who was elected to the post at the convention of the organization held in Atlantic City, July 1 to 4. Mr. Anderson has served as secretary of Indianapolis lodge No. 17 for twenty-four years and has been a member of the order's supreme council since 1922.

SCOUTS TO HEAR TALKS

Jamboree in Hungary Will Be Discussed at Camp.

Talks on the Boy Scout jamboree at Godollos, Hungary, last year, will be made at the scout camp program tomorrow night by F. O. Belzer, scout executive; Foster Clippinger and Otto Janus.

Tonight's Radio Tour

NETWORK OFFERINGS

- SATURDAY**
- 3:30—Little Jack Little's orchestra (CBS) WABC.
 - 4:00—Ragtime orchestra (NBC) WFAP.
 - 4:30—Piano Trio (NBC) WJZ.
 - 4:45—Ragtime orchestra (CBS) WABC.
 - 4:50—Al Pearce and his gang (NBC) WFAP.
 - 4:55—Ragtime orchestra (NBC) WJZ.
 - 5:00—Billie Holiday's orchestra (CBS) WABC.
 - 5:15—Billie Holiday's orchestra (CBS) WABC.
 - 5:30—Billie Holiday's orchestra (CBS) WABC.
 - 5:45—Billie Holiday's orchestra (CBS) WABC.
 - 6:00—Billie Holiday's orchestra (CBS) WABC.
 - 6:15—Billie Holiday's orchestra (CBS) WABC.
 - 6:30—Billie Holiday's orchestra (CBS) WABC.
 - 6:45—Billie Holiday's orchestra (CBS) WABC.
 - 7:00—Billie Holiday's orchestra (CBS) WABC.
 - 7:15—Billie Holiday's orchestra (CBS) WABC.
 - 7:30—Billie Holiday's orchestra (CBS) WABC.
 - 7:45—Billie Holiday's orchestra (CBS) WABC.
 - 8:00—Billie Holiday's orchestra (CBS) WABC.
 - 8:15—Billie Holiday's orchestra (CBS) WABC.
 - 8:30—Billie Holiday's orchestra (CBS) WABC.
 - 8:45—Billie Holiday's orchestra (CBS) WABC.
 - 9:00—Billie Holiday's orchestra (CBS) WABC.
 - 9:15—Billie Holiday's orchestra (CBS) WABC.
 - 9:30—Billie Holiday's orchestra (CBS) WABC.
 - 9:45—Billie Holiday's orchestra (CBS) WABC.
 - 10:00—Billie Holiday's orchestra (CBS) WABC.
 - 10:15—Billie Holiday's orchestra (CBS) WABC.
 - 10:30—Billie Holiday's orchestra (CBS) WABC.
 - 10:45—Billie Holiday's orchestra (CBS) WABC.
 - 11:00—Billie Holiday's orchestra (CBS) WABC.
 - 11:15—Billie Holiday's orchestra (CBS) WABC.
 - 11:30—Billie Holiday's orchestra (CBS) WABC.
 - 11:45—Billie Holiday's orchestra (CBS) WABC.
 - 12:00—Billie Holiday's orchestra (CBS) WABC.

WFBM (1230) Indianapolis

Indianapolis Power and Light Company

- SATURDAY**
- 3:30—Billie Holiday's orchestra (CBS) WABC.
 - 4:00—Billie Holiday's orchestra (CBS) WABC.
 - 4:30—Billie Holiday's orchestra (CBS) WABC.
 - 4:45—Billie Holiday's orchestra (CBS) WABC.
 - 4:50—Billie Holiday's orchestra (CBS) WABC.
 - 4:55—Billie Holiday's orchestra (CBS) WABC.
 - 5:00—Billie Holiday's orchestra (CBS) WABC.
 - 5:15—Billie Holiday's orchestra (CBS) WABC.
 - 5:30—Billie Holiday's orchestra (CBS) WABC.
 - 5:45—Billie Holiday's orchestra (CBS) WABC.
 - 6:00—Billie Holiday's orchestra (CBS) WABC.
 - 6:15—Billie Holiday's orchestra (CBS) WABC.
 - 6:30—Billie Holiday's orchestra (CBS) WABC.
 - 6:45—Billie Holiday's orchestra (CBS) WABC.
 - 7:00—Billie Holiday's orchestra (CBS) WABC.
 - 7:15—Billie Holiday's orchestra (CBS) WABC.
 - 7:30—Billie Holiday's orchestra (CBS) WABC.
 - 7:45—Billie Holiday's orchestra (CBS) WABC.
 - 8:00—Billie Holiday's orchestra (CBS) WABC.
 - 8:15—Billie Holiday's orchestra (CBS) WABC.
 - 8:30—Billie Holiday's orchestra (CBS) WABC.
 - 8:45—Billie Holiday's orchestra (CBS) WABC.
 - 9:00—Billie Holiday's orchestra (CBS) WABC.
 - 9:15—Billie Holiday's orchestra (CBS) WABC.
 - 9:30—Billie Holiday's orchestra (CBS) WABC.
 - 9:45—Billie Holiday's orchestra (CBS) WABC.
 - 10:00—Billie Holiday's orchestra (CBS) WABC.
 - 10:15—Billie Holiday's orchestra (CBS) WABC.
 - 10:30—Billie Holiday's orchestra (CBS) WABC.
 - 10:45—Billie Holiday's orchestra (CBS) WABC.
 - 11:00—Billie Holiday's orchestra (CBS) WABC.
 - 11:15—Billie Holiday's orchestra (CBS) WABC.
 - 11:30—Billie Holiday's orchestra (CBS) WABC.
 - 11:45—Billie Holiday's orchestra (CBS) WABC.
 - 12:00—Billie Holiday's orchestra (CBS) WABC.

SUNDAY

- 3:30—Billie Holiday's orchestra (CBS) WABC.
- 4:00—Billie Holiday's orchestra (CBS) WABC.
- 4:30—Billie Holiday's orchestra (CBS) WABC.
- 4:45—Billie Holiday's orchestra (CBS) WABC.
- 4:50—Billie Holiday's orchestra (CBS) WABC.
- 4:55—Billie Holiday's orchestra (CBS) WABC.
- 5:00—Billie Holiday's orchestra (CBS) WABC.
- 5:15—Billie Holiday's orchestra (CBS) WABC.
- 5:30—Billie Holiday's orchestra (CBS) WABC.
- 5:45—Billie Holiday's orchestra (CBS) WABC.
- 6:00—Billie Holiday's orchestra (CBS) WABC.
- 6:15—Billie Holiday's orchestra (CBS) WABC.
- 6:30—Billie Holiday's orchestra (CBS) WABC.
- 6:45—Billie Holiday's orchestra (CBS) WABC.
- 7:00—Billie Holiday's orchestra (CBS) WABC.
- 7:15—Billie Holiday's orchestra (CBS) WABC.
- 7:30—Billie Holiday's orchestra (CBS) WABC.
- 7:45—Billie Holiday's orchestra (CBS) WABC.
- 8:00—Billie Holiday's orchestra (CBS) WABC.
- 8:15—Billie Holiday's orchestra (CBS) WABC.
- 8:30—Billie Holiday's orchestra (CBS) WABC.
- 8:45—Billie Holiday's orchestra (CBS) WABC.
- 9:00—Billie Holiday's orchestra (CBS) WABC.
- 9:15—Billie Holiday's orchestra (CBS) WABC.
- 9:30—Billie Holiday's orchestra (CBS) WABC.
- 9:45—Billie Holiday's orchestra (CBS) WABC.
- 10:00—Billie Holiday's orchestra (CBS) WABC.
- 10:15—Billie Holiday's orchestra (CBS) WABC.
- 10:30—Billie Holiday's orchestra (CBS) WABC.
- 10:45—Billie Holiday's orchestra (CBS) WABC.
- 11:00—Billie Holiday's orchestra (CBS) WABC.
- 11:15—Billie Holiday's orchestra (CBS) WABC.
- 11:30—Billie Holiday's orchestra (CBS) WABC.
- 11:45—Billie Holiday's orchestra (CBS) WABC.
- 12:00—Billie Holiday's orchestra (CBS) WABC.

WKBF (1400) Indianapolis

Indianapolis Broadcasting, Inc.

- SATURDAY**
- 3:30—Billie Holiday's orchestra (CBS) WABC.
 - 4:00—Billie Holiday's orchestra (CBS) WABC.
 - 4:30—Billie Holiday's orchestra (CBS) WABC.
 - 4:45—Billie Holiday's orchestra (CBS) WABC.
 - 4:50—Billie Holiday's orchestra (CBS) WABC.
 - 4:55—Billie Holiday's orchestra (CBS) WABC.
 - 5:00—Billie Holiday's orchestra (CBS) WABC.
 - 5:15—Billie Holiday's orchestra (CBS) WABC.
 - 5:30—Billie Holiday's orchestra (CBS) WABC.
 - 5:45—Billie Holiday's orchestra (CBS) WABC.
 - 6:00—Billie Holiday's orchestra (CBS) WABC.
 - 6:15—Billie Holiday's orchestra (CBS) WABC.
 - 6:30—Billie Holiday's orchestra (CBS) WABC.
 - 6:45—Billie Holiday's orchestra (CBS) WABC.
 - 7:00—Billie Holiday's orchestra (CBS) WABC.
 - 7:15—Billie Holiday's orchestra (CBS) WABC.
 - 7:30—Billie Holiday's orchestra (CBS) WABC.
 - 7:45—Billie Holiday's orchestra (CBS) WABC.
 - 8:00—Billie Holiday's orchestra (CBS) WABC.
 - 8:15—Billie Holiday's orchestra (CBS) WABC.
 - 8:30—Billie Holiday's orchestra (CBS) WABC.
 - 8:45—Billie Holiday's orchestra (CBS) WABC.
 - 9:00—Billie Holiday's orchestra (CBS) WABC.
 - 9:15—Billie Holiday's orchestra (CBS) WABC.
 - 9:30—Billie Holiday's orchestra (CBS) WABC.
 - 9:45—Billie Holiday's orchestra (CBS) WABC.
 - 10:00—Billie Holiday's orchestra (CBS) WABC.
 - 10:15—Billie Holiday's orchestra (CBS) WABC.
 - 10:30—Billie Holiday's orchestra (CBS) WABC.
 - 10:45—Billie Holiday's orchestra (CBS) WABC.
 - 11:00—Billie Holiday's orchestra (CBS) WABC.
 - 11:15—Billie Holiday's orchestra (CBS) WABC.
 - 11:30—Billie Holiday's orchestra (CBS) WABC.
 - 11:45—Billie Holiday's orchestra (CBS) WABC.
 - 12:00—Billie Holiday's orchestra (CBS) WABC.

CATTLE FROM DROUGHT AREA BROUGHT HERE

Slaughtering Under Federal
Supervision to Start;
Poor Get Meat.

Plans for relief to farmers in drought-stricken areas are being rushed to completion here, Dr. Clarence L. Elliott, local agricultural department head, announced today.

An extensive slaughtering program will be carried on at the Indianapolis stock yards, in which more than 5,000 head of cattle from the stricken areas will be butchered.

Government officials have been ordered to supervise the program and make preparations to can the meat, Dr. Elliott said. The meat will be used for poor relief purposes.

As the recent drought ravaged grass lands and hay crops of the middle west, much of the cattle faced starvation until the government inaugurated its relief program, he declared.

Although Indiana's hay crop suffered severely from the sun's scorching rays, cattle in this section as a whole was spared, Dr. Elliott said. Most of the cattle are being shipped here from the Dakotas, Iowa and Wisconsin.

Contracts have been let with Kingan & Co. and Armour & Co. to slaughter the cattle under government supervision.

City Girl Dies Following Fall

Miss Mary Eulich, 68, of 2172 North Pennsylvania street, died Thursday night, after being hospitalized from complications following a hip fracture she suffered when she fell at her home two months ago.

BUSINESS NEWS FOR THE WEEK

MODERN PLANT PRODUCES BEST OF ICE CREAM

Jessup & Antrim Show Advance Since Day of Hand-Power Freezing.

"The continued high temperatures of the last few weeks has kept us in a hot state of affairs," according to officials of the Jessup & Antrim Ice Cream Company, 131 North Alabama street, manufacturer of Velvet ice cream. "A well-suited and popular remedy for the heat is smooth, well-flavored pure ice cream."

Such a cream is Velvet. Many mothers send children to stores where only Velvet ice cream is sold. One of the most essential of all foods, and typically American, ice cream always has been considered a delicacy. In bygone days it was a rare treat, made after much toil with a hand-turned freezer. Then the plant establishments began to make it in large quantities, developing machinery to replace obsolete methods, increasing its fineness and variety of flavors.

The Jessup & Antrim plant has modern equipment, an assurance to the public that it will receive the best in a variety of ice creams.

RUSSIA LURES MUSIC LOVERS

Soviet Celebration to Honor Borodin; Special Trip Planned.

By Times Special

NEW YORK, July 7.—Music lovers from all over America have gathered here for departure to Russia to attend the one-hundred-year anniversary musical festival to be staged in Leningrad May 20 to 30 in honor of the birth of Borodin, great Russian composer.

G. Hilmer Lundbeck, managing director of the Swedish-American line, announced today that his company had just completed arrangements to permit those interested in the expression of opera, ballet and drama to sail on the Kungsholm for Leningrad.

The Leningrad festival, primarily staged to commemorate the centenary of Borodin, will cover all the elements of culture. The picturesque works of the composer will be re-enacted in Russian operatic style.

Exhibition of classical Russian ballet will be held under the direction of S. E. Radlov of the State Theatrical Museum of Gafob.

The sensation of the event will be the appearance of the 9-year-old prodigy, Margarita Heifetz, both as conductor and pianist.

INTERESTING GOALS FOR SIGHTSEEING TOURISTS IN RUSSIA



A picturesque scene in the capital of the Soviet Union, Moscow. The historic Kremlin is shown. Information concerning tours into Russia may be obtained from the Union Trust Company.

ADVERTISERS LAUD POWER OF PRESS

Newspapers Get Major Part of Publicity Dollar.

By Times Special

NEWSPAPERS received from 65 to 69 cents of every advertising dollar spent by retail stores last year, according to a survey made by the sales promotion division of the National Retail Dry Goods Association.

The report shows stores with sales above \$10,000,000 led with an expenditure of 69.9 per cent. Those with a volume up to \$2,000,000 were low with 65 per cent.

Paul E. Murphy, chairman of the sales promotion division, said the "nearly uniform distribution of the publicity dollar regardless of the size of the store was decidedly interesting and a tribute to the pulling power of newspaper advertising."

VARIOUS LIGHTS USED IN EXHIBIT

Lamp Sideshow Displayed by Westinghouse at Fair in Chicago.

By Times Special

CHICAGO, July 7.—In commemorating a century of progress, the world's fair at Chicago this year, also commemorates forty-one years of progress in electric lighting. It was at the world's fair of 1893 that George Westinghouse used his famous "stopper" lamp to illuminate the fairground with electricity.

The lamps on display in the Westinghouse exhibit form a veritable sideshow of peculiar shapes. There is the "Grain of Wheat" lamp which produces the merest speck of light for surgical instruments.

In the display is a replica of a 100,000-watt lamp with a glass bulb so large that a medium sized girl could stand inside it, and with filament wire the diameter of a lead pencil.

Other lamps on display include some of the newer designs which have come into use only in the past year. Among these is the bi-post lamp which has no base and is used for airway beacon lamps and spotlight projection lamps.

Also included in the group of high wattage lamps is the 5,000-watt diving lamp which has a special rubber waterproof mounting. Lamps of this nature were used by Sir Hubert Wilkins on his famous North Pole expedition in a submarine, and by Simon Lake on the Lake-Railay Lusitania expedition.

CITY COMPANY OBSERVES RIGID INSURANCE LAW

Indianapolis Life More Than Meets Strict Legal Rules.

The Indianapolis Life Insurance Company, 2960 North Meridian street, formed in 1905 as an old line legal reserve mutual company, with the purpose of providing life and endowment insurance at the lowest cost consistent with safety, has more than fulfilled every legal requirement, officials state.

It may be noted that an important factor in the actual cost of insurance is the mortality rate of a company. A policyholder profits from having his insurance with a company that has a low mortality rate. The average actual to expected mortality of life insurance companies is approximately 60 per cent, but the average of the Indianapolis Life, since its organization, has been only 41.1 per cent.

The company has maintained a splendid record even during depression years, the assets having increased every year, and from 1930 to 1934 they increased 27.1 per cent. The Indianapolis Life operates under the strict investment and compulsory deposit law of Indiana. This law limits investments to non-speculative securities and specifically stipulates the kind of securities that an Indiana company may acquire.

Uses More Turpentine

Total imports of turpentine into the United Kingdom took a tremendous jump this year. For the first three months of 1934, the total imports amounted to 1,531,889 gallons, as compared with 570,886 for the corresponding period of a year ago. The United States was the main exporter, sending more than 85 per cent of the total.

\$300,000 TO BE SPENT ON QUEBEC HIGHWAYS

QUEBEC, Quebec, June 7.—Even if the old bus won't stop along as fast as that new streamlined job next door you'll have to eat no dust in the province of Quebec this summer, J. E. Perrault, minister of roads for Quebec, has announced that \$300,000 will be spent this year to keep Quebec's 30,000 miles of highways free of dust.

More than half of the Quebec parts of the large province, is comprised of improved roads, but even in remote sections where gravel routes lead you to fish and game, calcium chloride applications are making sure that no "smoke gets in your eyes."

THE SALVATION ARMY

feels that your generous response to the Community Fund appeal last fall has made it possible to give one thousand mothers and children a week's vacation at their Fresh Air Camp.

PLANT NOW

Rose Bushes, Lawn Seed, Shrubs, Seed Potatoes, Flower and Vegetable Seed, Etc.
Complete Stock at
Bash's Seed Store Co.
"Inspect Our Stock"
141 N. Delaware, LI. 5226

The Year-Around American Family Dessert

Velvet ICE CREAM

Eat It Daily for Its Concentrated Food Value

Look for Poster in Dealer's Store Announcing New Velvet Special

SOME RADIATORS

—can not always be repaired... See us for replacement... Guaranteed adequate cooling... prices are higher than others charge for skimped radiators.

Open till 12:00 nightly except Sunday
ACME RADIATOR CO., Inc.
623 N. Illinois St. RI-1466

OLD RELIABLE HOUSE PAINT

A Pure Lead, Zinc and Linseed Oil Product. "Direct from Manufacturer to Consumer."
Estimate and Prices Given Without Obligation.
MARION PAINT CO.
366 South Meridian Street

Ask Your Dealer for SELF-OPENING

SEALSKIN Bathroom Tissue

A Good Job Offered

Wanted party with \$3,000 working capital and necessary qualifications to organize sales for elaborate program and setup. Investment protected by merchandise. Address
Roy O. Stringer Co., Ltd.
621 N. Noble St.

Defective Steering Is Dangerous

Does Your Car Shimmy, Wander, or Steer Hard? Such Defects Are Easily Corrected Without Much Expense
INDIANA CARBURETOR AND BRAKE SERVICE
325 N. Delaware St. LI. 1876

Bass Photo Co.

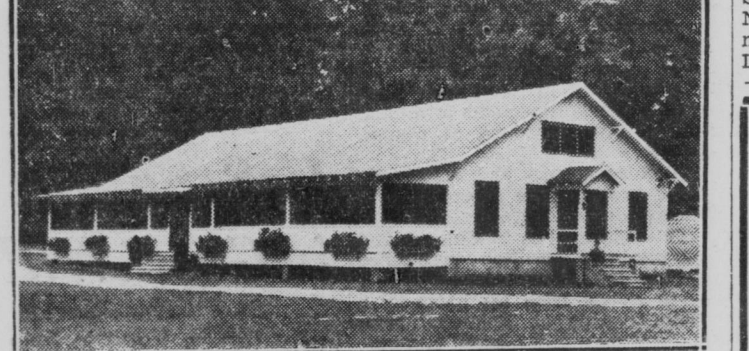
Commercial Photographers
RI. 7747
Views
Groups
Interiors
Enlargements
Lantern Slides
C. C. BRANSON, Mgr.
Res. Humboldt 2820

WHY, GRACE, YOU'RE TEN MINUTES EARLY

WELL YOU SEE - I CAME OVER ON THE STREET CAR

INDIANAPOLIS RAILWAYS

Milk Served Plentifully at Salvation Army Camp



Forty Gallons Used Each Day Reflected in Weight Gains.

During the hot weather 100 underprivileged children and their mothers are enjoying the advantages of a week in camp, being cared for by the Salvation Army.

Located near Oaklawn, the camp has been open since June 8, the fourth group now being in camp. More than 1,000 will be accommodated during the summer.

The most needy cases selected by the Family Welfare Society are given a medical examination, and are then sent to camp, returning home with an average gain in weight of two pounds. All are kept on a regulated diet, with plenty of milk, forty gallons being consumed daily.

This is the only camp that provides for Negroes, groups from the

Beaute-Artes

Famous French Tonics, Live Steam PERMANENT
\$1.00
Regular \$3.50 Value
Complete with Shampoo and Set
No Appointment Necessary
Gray Hair Our Specialty
601 Roosevelt Bldg.
Corner Illinois and Washington Sts.

TOMPKINS ICE CREAM CO.

Try The Famous Double Dip Cones
5c
SEALSKIN Bathroom Tissue

Silver Edge

THE SUPER STRENGTH BEER
AMERICAN BEVERAGES INC.
DISTRIBUTORS - PHONE RI. 5232

1882 Fifty-Two Years of Continuous Service 1934

Joseph Gardner Co.
Tin, Copper and Sheet Iron Work
Repairs on Slate, Tile and Gravel Roofs, Gutters, Spouting and Furnaces.
147-153 Kentucky Ave. Riley 1562

GIVE YOUR KIDNEYS AND BLADDER A SPRING CLEANING

Diurex Pills will expel the poisons from your system and make you feel like a new person. A continuous backache takes all the joy out of living. If accompanied by irregular urination and a tired, nervous feeling, backache may be caused by kidney or bladder trouble.

Diurex Pills will help you as they helped Andy Tucker, 215 N. Illinois St., Indianapolis, Indiana. He says: "Diurex will help any one suffering from a backache caused by kidney trouble. I have taken two boxes of Diurex and my backache is almost gone. I would pay, gladly, twice as much as you ask for Diurex, if necessary, because it is a wonderful medicine."

DRINK YOUR WAY TO HEALTH
Crazy Crystals Co.
142 N. Penn. St. Phone RI. 4818
Call Western Union for Free Delivery Anytime.

DRINK CRAZY Water Crystals

Recommended for
Constipation—Stomach Trouble
Rheumatism—Kidney Trouble
—When any of the foregoing are the result of faulty elimination.