

Tonight's Radio Tour

NETWORK OFFERINGS

SATURDAY	
4:00—Punch's orchestra (NBC) WABC.	4:00—Punch's orchestra (NBC) WABC.
4:30—WABC.	4:30—WABC.
4:45—Charles Castle (CBS) WABC.	4:45—Charles Castle (CBS) WABC.
5:00—More the Artist (CBS) WABC.	5:00—More the Artist (CBS) WABC.
5:15—Van Bredon's orchestra (NBC) WABC.	5:15—Van Bredon's orchestra (NBC) WABC.
5:30—Frederick William Wile (CBS) WABC.	5:30—Frederick William Wile (CBS) WABC.
5:45—Jack Armstrong (CBS) WABC.	5:45—Jack Armstrong (CBS) WABC.
6:00—Humbert's orchestra (NBC) WABC.	6:00—Humbert's orchestra (NBC) WABC.
6:15—Captain Al Williams (NBC) WABC.	6:15—Captain Al Williams (NBC) WABC.
6:30—Hula orchestra (CBS) WABC.	6:30—Hula orchestra (CBS) WABC.
6:45—Fido Melia and congregation (CBS) WABC.	6:45—Fido Melia and congregation (CBS) WABC.
7:00—Three Scamps (NBC) WABC.	7:00—Three Scamps (NBC) WABC.
7:15—John Harris' orchestra (NBC) WABC.	7:15—John Harris' orchestra (NBC) WABC.
7:30—Greene Olsen's orchestra (NBC) WABC.	7:30—Greene Olsen's orchestra (NBC) WABC.
7:45—Decision in the News (NBC) WABC.	7:45—Decision in the News (NBC) WABC.
8:00—Serenaders (CBS) WABC.	8:00—Serenaders (CBS) WABC.
8:15—Vocal (NBC) WABC.	8:15—Vocal (NBC) WABC.
8:30—Guest Speaker, Kate's orchestra (NBC) WABC.	8:30—Guest Speaker, Kate's orchestra (NBC) WABC.
8:45—American Quartet (CBS) WABC.	8:45—American Quartet (CBS) WABC.
9:00—Isham Jones' orchestra (CBS) WABC.	9:00—Isham Jones' orchestra (CBS) WABC.
9:15—Saturday evening (CBS) WABC.	9:15—Saturday evening (CBS) WABC.
9:30—U. S. Marine band (NBC) WABC.	9:30—U. S. Marine band (NBC) WABC.
9:45—Hanna's orchestra (NBC) WABC.	9:45—Hanna's orchestra (NBC) WABC.
10:00—The Bard of Erin (CBS) WABC.	10:00—The Bard of Erin (CBS) WABC.
10:15—Katie's orchestra (CBS) WABC.	10:15—Katie's orchestra (CBS) WABC.
10:30—Louis Jordan's orchestra (NBC) WABC.	10:30—Louis Jordan's orchestra (NBC) WABC.
10:45—The Scamp (NBC) WABC.	10:45—The Scamp (NBC) WABC.
11:00—Major Sullivan and the Knoch (NBC) WABC.	11:00—Major Sullivan and the Knoch (NBC) WABC.
11:15—Beatrice Fairfax (NBC) WABC.	11:15—Beatrice Fairfax (NBC) WABC.
11:30—Beatrice Fairfax (NBC) WABC.	11:30—Beatrice Fairfax (NBC) WABC.
11:45—Beatrice Fairfax (NBC) WABC.	11:45—Beatrice Fairfax (NBC) WABC.
12:00—Beatrice Fairfax (NBC) WABC.	12:00—Beatrice Fairfax (NBC) WABC.

WFBM (1230) Indianapolis

Indianapolis Power and Light Company

SATURDAY	
4:00—Leo Zollo orchestra (NBC).	4:00—Leo Zollo orchestra (NBC).
4:30—News Flash.	4:30—News Flash.
4:45—Al Pearce and His Gang (NBC).	4:45—Al Pearce and His Gang (NBC).
5:00—Al Pearce and His Gang (NBC).	5:00—Al Pearce and His Gang (NBC).
5:15—Al Pearce and His Gang (NBC).	5:15—Al Pearce and His Gang (NBC).
5:30—Al Pearce and His Gang (NBC).	5:30—Al Pearce and His Gang (NBC).
5:45—Al Pearce and His Gang (NBC).	5:45—Al Pearce and His Gang (NBC).
6:00—Al Pearce and His Gang (NBC).	6:00—Al Pearce and His Gang (NBC).
6:15—Al Pearce and His Gang (NBC).	6:15—Al Pearce and His Gang (NBC).
6:30—Al Pearce and His Gang (NBC).	6:30—Al Pearce and His Gang (NBC).
6:45—Al Pearce and His Gang (NBC).	6:45—Al Pearce and His Gang (NBC).
7:00—Al Pearce and His Gang (NBC).	7:00—Al Pearce and His Gang (NBC).
7:15—Al Pearce and His Gang (NBC).	7:15—Al Pearce and His Gang (NBC).
7:30—Al Pearce and His Gang (NBC).	7:30—Al Pearce and His Gang (NBC).
7:45—Al Pearce and His Gang (NBC).	7:45—Al Pearce and His Gang (NBC).
8:00—Al Pearce and His Gang (NBC).	8:00—Al Pearce and His Gang (NBC).
8:15—Al Pearce and His Gang (NBC).	8:15—Al Pearce and His Gang (NBC).
8:30—Al Pearce and His Gang (NBC).	8:30—Al Pearce and His Gang (NBC).
8:45—Al Pearce and His Gang (NBC).	8:45—Al Pearce and His Gang (NBC).
9:00—Al Pearce and His Gang (NBC).	9:00—Al Pearce and His Gang (NBC).
9:15—Al Pearce and His Gang (NBC).	9:15—Al Pearce and His Gang (NBC).
9:30—Al Pearce and His Gang (NBC).	9:30—Al Pearce and His Gang (NBC).
9:45—Al Pearce and His Gang (NBC).	9:45—Al Pearce and His Gang (NBC).
10:00—Al Pearce and His Gang (NBC).	10:00—Al Pearce and His Gang (NBC).
10:15—Al Pearce and His Gang (NBC).	10:15—Al Pearce and His Gang (NBC).
10:30—Al Pearce and His Gang (NBC).	10:30—Al Pearce and His Gang (NBC).
10:45—Al Pearce and His Gang (NBC).	10:45—Al Pearce and His Gang (NBC).
11:00—Al Pearce and His Gang (NBC).	11:00—Al Pearce and His Gang (NBC).
11:15—Al Pearce and His Gang (NBC).	11:15—Al Pearce and His Gang (NBC).
11:30—Al Pearce and His Gang (NBC).	11:30—Al Pearce and His Gang (NBC).
11:45—Al Pearce and His Gang (NBC).	11:45—Al Pearce and His Gang (NBC).
12:00—Al Pearce and His Gang (NBC).	12:00—Al Pearce and His Gang (NBC).

WLW (700) Cincinnati

SATURDAY	
4:00—Platt and Nieman, pianists (NBC).	4:00—Platt and Nieman, pianists (NBC).
4:15—Mildred and Margaret, Carole vocalists.	4:15—Mildred and Margaret, Carole vocalists.
4:30—Wesley Boynton and Helen Janke.	4:30—Wesley Boynton and Helen Janke.
4:45—Dr. Stanley High (NBC).	4:45—Dr. Stanley High (NBC).
5:00—Major Sullivan and the Knoch (NBC).	5:00—Major Sullivan and the Knoch (NBC).
5:15—Beatrice Fairfax (NBC).	5:15—Beatrice Fairfax (NBC).
5:30—Beatrice Fairfax (NBC).	5:30—Beatrice Fairfax (NBC).
5:45—Beatrice Fairfax (NBC).	5:45—Beatrice Fairfax (NBC).
6:00—Beatrice Fairfax (NBC).	6:00—Beatrice Fairfax (NBC).
6:15—Beatrice Fairfax (NBC).	6:15—Beatrice Fairfax (NBC).
6:30—Beatrice Fairfax (NBC).	6:30—Beatrice Fairfax (NBC).
6:45—Beatrice Fairfax (NBC).	6:45—Beatrice Fairfax (NBC).
7:00—Beatrice Fairfax (NBC).	7:00—Beatrice Fairfax (NBC).
7:15—Beatrice Fairfax (NBC).	7:15—Beatrice Fairfax (NBC).
7:30—Beatrice Fairfax (NBC).	7:30—Beatrice Fairfax (NBC).
7:45—Beatrice Fairfax (NBC).	7:45—Beatrice Fairfax (NBC).
8:00—Beatrice Fairfax (NBC).	8:00—Beatrice Fairfax (NBC).
8:15—Beatrice Fairfax (NBC).	8:15—Beatrice Fairfax (NBC).
8:30—Beatrice Fairfax (NBC).	8:30—Beatrice Fairfax (NBC).
8:45—Beatrice Fairfax (NBC).	8:45—Beatrice Fairfax (NBC).
9:00—Beatrice Fairfax (NBC).	9:00—Beatrice Fairfax (NBC).
9:15—Beatrice Fairfax (NBC).	9:15—Beatrice Fairfax (NBC).
9:30—Beatrice Fairfax (NBC).	9:30—Beatrice Fairfax (NBC).
9:45—Beatrice Fairfax (NBC).	9:45—Beatrice Fairfax (NBC).
10:00—Beatrice Fairfax (NBC).	10:00—Beatrice Fairfax (NBC).
10:15—Beatrice Fairfax (NBC).	10:15—Beatrice Fairfax (NBC).
10:30—Beatrice Fairfax (NBC).	10:30—Beatrice Fairfax (NBC).
10:45—Beatrice Fairfax (NBC).	10:45—Beatrice Fairfax (NBC).
11:00—Beatrice Fairfax (NBC).	11:00—Beatrice Fairfax (NBC).
11:15—Beatrice Fairfax (NBC).	11:15—Beatrice Fairfax (NBC).
11:30—Beatrice Fairfax (NBC).	11:30—Beatrice Fairfax (NBC).
11:45—Beatrice Fairfax (NBC).	11:45—Beatrice Fairfax (NBC).
12:00—Beatrice Fairfax (NBC).	12:00—Beatrice Fairfax (NBC).

DRINK CRAZY
Water Crystals
Time in WFBM Mon. Wed. Fri. 12:45 noon—Daily 6:45
WLW Sun. 12:30

NORTH SIDE

UPTOWN

42nd and College
Double Feature
Madge Evans
"FUGITIVE LOVERS"
"VOICE IN THE NIGHT"

DREAM

2311 Station St.
Double Feature
James Cagney
"LADY KILLER"
"LAW AND THE LAWLESS"

Stratford

19th and College
Double Feature
W. F. Heide
"TILLIE AND GUS"
"SUNDOWN RIDER"

MECCA

Noble at Mass.
Double Feature
Richard Arlen
"GOLDEN HARVEST"
"SAVAGE GIRL"

GARRICK

30th and Northwestern
Double Feature
Lew Ayres
"CROSS COUNTRY CRUISE"
"SOLITAIRE MEN"

REX

30th and Northwestern
Double Feature
Schuyler Sidney
"GOOD DAME"
"TRAIL DRIVE"

RITZ

Illinois at 34th
Double Feature
Dumaine Durante
"JOE PALOOKA"
"FIGHTING RANGER"

ST. CLAIR

St. Clair
Double Feature
C. Colbert
"TORCH SINGER"
"EAT 'EM ALIVE"

TALBOT

Talbot at 22nd
Double Feature
John Boles
"BELOVED"
"Miss Fane's Baby Is Stolen"

ZARING

Double Feature
Lee Tracy
"ADVANCE TO LOVELORN"
"SON OF KONG"

TACOMA

244 E. Wash. St.
Double Feature
Alice Brady
"SHOULD LADIES BELIEVE"
"SON OF KONG"

STRAND

1332 E. Wash.
Double Feature
Geo. Bancroft
"BLOOD MONEY"
"VOICE IN THE NIGHT"

RIVOLI

Dearborn at 10th
Double Feature
Tim McCoy
"VOICE IN THE NIGHT"
"ESKIMO"

IRVING

5507 E. Wash.
Double Feature
Tim McCoy
"SPEEDWINGS"
"FOUR FRIGHTENED PEOPLE"

Washington

221 E. Wash.
Double Feature
Sally Eilers
"WALLS OF GOLD"
"MY PAL THE KING"

STATE

2208 W. Tenth St.
Double Feature
Jackie Cooper
"LONE COWBOY"
"RAFTER ROMANCE"

EAST SIDE

Hamilton

3114 E. 10th
Double Feature
Norman Foster
"ORIENT EXPRESS"
"S. O. S. ICEBERG"

Paramount

New Jer. at E. Wash.
Double Feature
Alice Brady
"Miss Fane's Baby Is Stolen"
"TEXAS GUN SHOOTER"

Hollywood

4020 E. New York
Double Feature
Tim McCoy
"HOLD THAT GIRL"
"PHANTOM THUNDERBOLT"

TUXEDO

2930 E. 10th St.
Double Feature
Lillian Harvey
"I AM SUZANNE"
"SMOKE"

PARKER

Double Feature
Joan Blondell
"CONVENTION CITY"
"RIGHT TO ROMANCE"

Fountain Square

Double Feature
Edmund Lowe
"NO MORE WOMEN"
"FIGHTING PARSON"

SANDERS

Prospect & Shelby
Double Feature
Richard Arlen
"GOLDEN HARVEST"
"FOUR FRIGHTENED PEOPLE"

Oriental

1105 S. Meridian
Double Feature
Mae West
"DUCK SOUP"
"KIT CARSON"

GRANADA

1016 Virginia Ave.
Double Feature
Reis Toomey
"PENAL CODE"
"TRAIL DRIVE"

Roosevelt

1429 S. Meridian
Double Feature
Tim McCoy
"HOLD THE PRESS"
"BITTERSWEET"

AVALON

Prospect at Churchman
Double Feature
Fay Wray
"MADAM SPY"
"ORIENT EXPRESS"

DAISY

2540 W. Mich.
Double Feature
John Wayne
"SAGE BRUSH TRAIL"
"MYRT AND MARGE"

BELMONT

W. Wash. at Belmont
Double Feature
James Dunn
"HOLD THAT GIRL"
"SLEEPERS EAST"

CITY INDUSTRIAL NEWS OF THE WEEK

NEW THRILLS MAY BE GIVEN AT SPEEDWAY

Untried Drivers and Rule Changes Increase Race Interest.

Daring, but untested race drivers, new cars of radical design and drastic rule changes will mark the twenty-second annual 500-mile race at the Indianapolis Motor Speedway, May 30. A world-famed event, the race will feature many important changes directly affecting the motor industry.

The high deacons of speed must this year complete the grueling 200 laps with a limit of forty-five gallons of gasoline. This means that whirling around the two-and-a-half mile brick oval at an average of better than 100 miles an hour, the cars must make at least eleven miles to the gallon. The last drop of gasoline in the tank may be the measure of victory because, when the designated supply is exhausted, the race is over for that particular car.

Other new regulations reduce the starting number from 42 to 33 cars, provide for a committee of drivers to pass on the ability of new drivers and give special inducements to two-cycle motors.

Diesel Cars Entered

Two experimental, oil-burning Diesel race cars built by the Cummins-Diesel Company are entered this year. In 1931 a Diesel set a new record by completing the 500 miles without a stop, averaging eighty-six miles an hour. One of the new Diesels has a two-cycle, supercharged motor and the other, a four-cycle supercharged power plant. They are both rear drive and are lighter, shorter, smaller and said to be much faster than the 1931 models.

Bill (Wild Bill) Cummings, fastest to qualify last year and early pace maker, was first on the track this spring. He averaged around 114 miles an hour in his initial run, and now is running in good gas mileage. Harry Miller, race car designer, is watching Cummings' test for careful adjustment of mechanism. The four-cylinder engine, according to Miller, are ideal for the new fuel limitations.

Sampson Will Drive

Riley Brett, ace mechanic and veteran driver, has arrived at the Indianapolis Motor Speedway and expects to have Alton Sampson's car rolling soon. It is the car that Gardner drove into fourth place last year and is equipped with a two-way radio telephone system for communication between the driver and his pit. Famous drivers who have already signed their intention of entering the 1934 classic are Cummings, Sampson, Phil Shafer, Rick Decker, "Deacon" Litz, Peter DePaolo and Lou Moore. Leon Duray, who is here looking for a chauffeur to pilot his speedster this year, may step out of his temporary retirement and drive himself.

DISTILLERY WILL OPEN ADVERTISING CAMPAIGN

Seagram Company Urges Public Confidence in Whisky Blends.

NEW YORK, April 21.—A new and extensive advertising campaign to include leading newspapers throughout the country will be started by Seagram & Sons, one of the oldest distilling houses in the business, Henry I. Peffer, chairman, announces.

The chief objective of the campaign will be to build public confidence in blends of the type that made up 70 per cent of the whiskeys sold in the country before prohibition. The Seagram company has a large stock of whisky which has been stored in Canada for years and in addition has a plant at Lawrenceville, Ind., now distilling whisky for future use.

NEON SIGNS COMPLETE SERVICE

Exclusive Mfgs. Reflectub Signs

ALLIED NEON SIGN CO.

925 Ft. Wayne Ave. LI. 3906

Defective Steering Is Dangerous

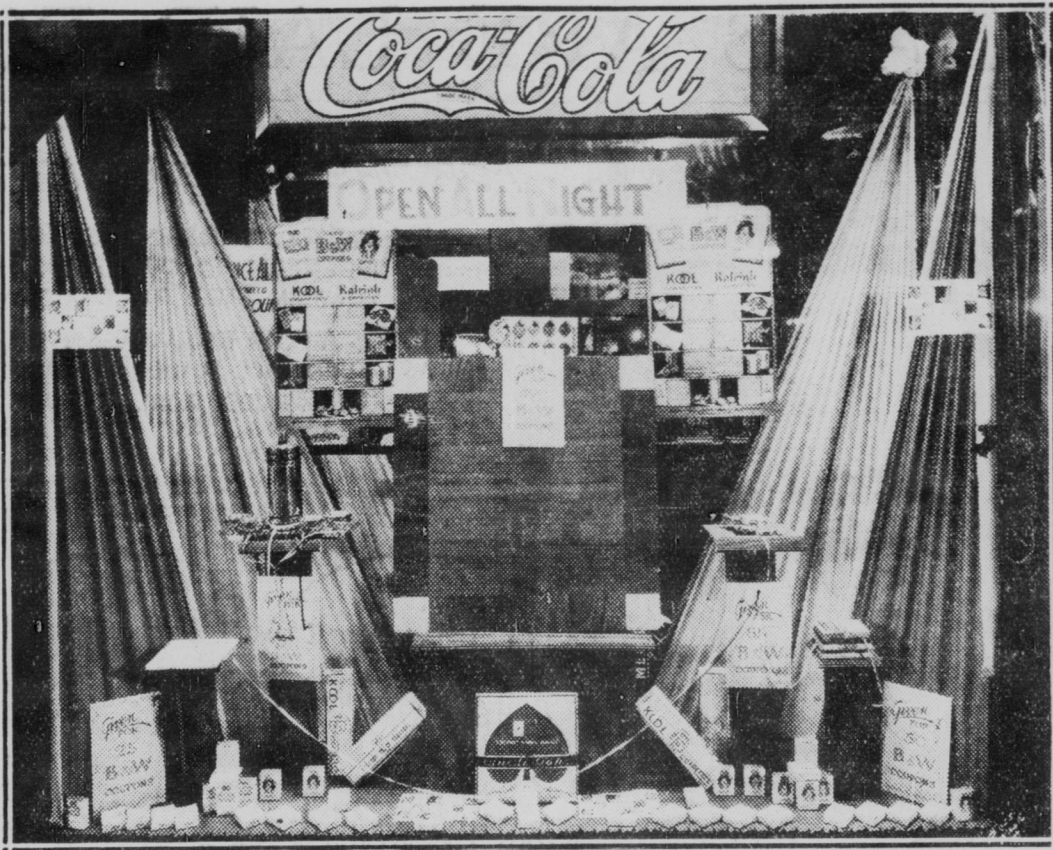
Does Your Car Shimmy, Wander, or Steer Hard?

Such Defects Are Easily Corrected Without Much Expense

INDIANA CARBURETOR AND BRAKE SERVICE

325 N. Delaware St. LI. 1876

PREMIUMS OFFERED TO PURCHASERS OF CIGARETS



This window display featuring bridge accessories is being shown this week at the Fergus drug store, Illinois and Market streets. It was installed by National Displays, Inc., for the Brown & Williamson Tobacco Company, Louisville, Ky. The accessories are offered as premiums for coupons given with each package of Raleigh or Kool cigarettes. Window displays of the above type permit the coupon holders to see the prizes before making a selection.

National Displays, Inc., has served the Brown & Williamson Company for the past three years.

PAINTING FOUND GREATEST NEED

Government Survey Shows Condition of Farm Structures.

By Times Special

WASHINGTON, D. C., April 21.—In a survey of sweeping proportions, the United States government is assembling data for the first time which will give, at a glance, a comprehensive picture of the physical state of the country's farm properties.

The farm housing survey, being conducted by the department of agriculture in conjunction with state agricultural extension services, and using civil works administration workers, is giving the federal government impressive factual information on the needs of America's farms.

With 600,000 farm houses already reported on in widely separated sections of the country, the study will continue until a record of every farm property in the United States, with the exception of New York and Pennsylvania, has been made. The expected states decided against participating in the survey.

Paramount among the needs found thus far, according to the study is that of exterior painting. The survey figures, which are assembled by counties, reveal this need to be greatest in more instances than any other. Insulation, screens and foundations also rank high among needs of these properties.

Information compiled in the reports covers construction of each building, whether painted or unpainted, age of houses, size, average rooms and average number of occupants of each building.

The survey is expected to be of considerable aid to the administration in mapping its home modernization and renovation program, expected to get under way in the near future.

A Good Job Offered

Wanted party with \$3,000 working capital and necessary qualifications to organize sales for elaborate program and setup. Investment protected by merchandise. Address

Roy O. Stringer Co., Ltd. 621 N. Noble St.

AUTO REPAIR

By Madden Copple Co. 733 N. Capitol Ave. LI. 6524

ACHIEVEMENTS

A brief summary for the first quarter of 1934 shows the following and many other outstanding achievements:

A GAIN of 46 per cent in Paid Dividends over the same period of 1933.

A SUBSTANTIAL GAIN in Insurance in Force.

AN INCREASE in the number of men writing business.

AN INCREASE in Cash on hands and Government Bonds.

Continued Favorable Mortality.

Indianapolis Life Insurance Company

Meridian at 30th St. Organized in 1905 TA-0788

March Building Triples Total of Month in 1933

Each of Four Classes of Construction Share Gain.

By Times Special

NEW YORK, April 21.—March contracts for construction of all descriptions amounted to \$179,161,500, according to the F. W. Dodge Corporation. This was almost twice the total reported for February and about three times the volume of March, 1933. Increases over both the previous month and March of last year were scored in each of the four principal classes of construction.

For the first quarter of 1934 contracts totaled \$462,341,500 as contrasted with only \$196,026,800 in the corresponding quarter of 1933. For residential building the gain over 1933 to date amounted to about 46 per cent; for nonresidential building the increase was almost 85 per cent; for public works the 1934 volume was more than three and one-half times the size of the 1933 total; while for public utilities the first quarter's total was about two and one-half times as great as in the corresponding period of 1933.

Contracts awarded in March showed gains over February in each of the thirteen Dodge districts except southern Michigan, where a relatively unimportant decline was reported. Gains over March, 1933, were universal throughout the thirteen districts. Likewise, for the initial quarter of 1934 contracts showed gains over the corresponding quarter of 1933 in each of the districts without exception.

The Dodge bulletin states: "During the second quarter of

AUTO BODY REPAIRS

Axles Straightened Cold While on the Car

Fenders, Radiators and Bodies Repaired

C. OFF & CO. 107 N. East St. LI. 1549

THE MUTUAL BENEFIT

The World's Largest Health and Accident concern and its companion company, the United Benefit Life Insurance Company, is increasing its Marion County Agency Force. Call at 732 Circle Tower, Indianapolis, for details. Appointment necessary.

Redfield-McGurk, Managers.

NOTICE—Manufacturers and Jobbers

SPACE FOR RENT Complete Housing Facilities for Large or Small Units. Private Switches, Served by Belt R. R. and Traction Lines Connected With All Railroads. Watchman Service Free. Indianapolis Industrial Center 19th St. and Marquette Ave. CHerry 1915

ACHIEVEMENTS