

## John Ferguson Is Offering of City Players

St. John Ervine's "John Ferguson" will be offered as the third regular production by the Sutherland players for two performances, tonight and Monday at 8:15 o'clock, at the Sutherland Presbyterian church, Twenty-eighth and Guilford avenue.

"John Ferguson" was produced in this city a few years ago by the Civic theater, with George Sommes in the leading role. The play was produced first abroad, and then by the Theater guild in New York with unusual success.

Norman Green, director of the players, will appear in the title role, supported by Mabel Buttrich, Paul Fiedlerjohn, Florence Berrie, Lorin Woodward, Edward Green, Clamor Fiedlerjohn, Robert Gibson, James McDaniel, Elizabeth Ervin, Margaret Berrie, Geneva Fiedlerjohn, Martha Robbins, Richard Robbins, John Farley and Charles Haas.

**New Star in Hollywood**  
Madeleine Carroll, British film actress, star of "I Was a Spy," is en route to Hollywood to appear in a single Fox production, "The World Moves On," an original screen story by Benj. and Berkeley. John Ford, director of such outstanding photoplays as "Four Sons," "Arrow-smith" and "Pilgrimage," will do as much for Miss Carroll's single American appearance.

**NORTH SIDE**  
**TALBOTT** Talbot & 22nd  
Double Feature  
Betty Davis  
'BUREAU OF MISSING PERSONS'  
Carole Lombard  
'WHITE WOMAN'

Sun. Katharine Hepburn-Jean Bennett  
'LITTLE WOMEN'  
**Stratford** 19th and College  
Double Feature  
Buck Jones  
'THRILL HUNTER'  
'TRAPPED IN TIA JUANA'

Sun. Double Feature—Paul Lukas  
'SECRETS OF THE BLUE ROOM'  
Spencer Tracy-Fay Wray  
'SHANGHAI MADNESS'  
**MECCA** Noble at Mass.  
Double Feature  
Hoot Gibson  
'THE DUDE BANDIT'  
'THE RIOT SQUAD'

Sun. Double Feature—Constance Bennett  
'AFTER TONIGHT'  
Spencer Tracy-Loretta Young  
'A MAN'S CASTLE'  
**GARRICK** 311 at 30th  
Double Feature  
Sally Eilers  
'WALLS OF GOLD'  
'COLLEGE HUMOR'

Sun. Dick Powell-Jean Blondell  
'FOOTLIGHT PARADE'  
**REX** 30th & Northwestern  
Double Feature  
Chas. Farrell  
'GIRL WITHOUT A ROOM'  
'THIS MAD GAME'

Sun. Double Feature—Ann Dvorak  
'COLLEGE COACH'  
Jackie Cooper  
'LONE COWBOY'  
**RITZ** Illinois at 34th  
Double Feature  
Wallace Beery  
'THE BOWERY'  
'WILD BOYS OF THE ROAD'

Sun. Double Feature—Joe E. Brown  
'SON OF A SAILOR'  
Victor McLaglen  
'LAUGHING AT LIFE'  
**UPTOWN** 42nd at College  
Double Feature  
Wm. Powell  
'PRIVATE DETECTIVE NO. 62'  
'LAUGHING AT LIFE'

Sun. Double Feature—Warner Baxter  
'AS HUSBANDS GO'  
Joan Blondell-Warren William  
'GOODBYE AGAIN'  
**ST. CLAIR** St. Clair  
Double Feature  
Buck Jones  
'THRILL HUNTER'  
'BUREAU OF MISSING PERSONS'

Sun. Double Feature—Warren William  
'GOODBYE AGAIN'  
Joan Crawford-Clark Gable  
'DANCING LADY'  
**DREAM** 2331 Station St.  
Double Feature  
Spencer Tracy  
'POWER AND THE GLORY'  
'THE LAST TRAIL'

Sun. Double Feature—El Brendel  
'OLSEN'S BIG MOMENT'  
Loretta Young-Spencer Tracy  
'A MAN'S CASTLE'  
**ZARING** Geo. Bancroft  
Francis Dee  
'BLOOD MONEY'

Sun. Bing Crosby-Marion Davies  
'GOING HOLLYWOOD'  
**RIVOLI** Dearborn at 10th  
Double Feature  
Dorothy Wick  
'CRADLE SONG'  
'THE SOLITAIRE MAN'

Sun. Jack Oakie-Ginger Rogers  
'SITTING PRETTY'  
**IRVING** 5307 E. Wash.  
Double Feature  
Chas. Ruggles  
'GOODBYE LOVE'  
'SECRETS OF THE BLUE ROOM'

Sun. Katharine Hepburn-Jean Bennett  
'LITTLE WOMEN'  
**Hamilton** 2116 E. 10th  
Double Feature  
Max Baer  
'PRIZEFIGHTER AND THE LADY'  
'LADIES MUST LOVE'

Sun. Double Feature—Lillian Harvey  
'MY LIPS BETRAY'  
Joan Blondell-Warren William  
'GOODBYE AGAIN'  
**STRAND** 1332 E. Wash.  
Double Feature  
Ginger Rogers  
'CHANCE AT HEAVEN'  
'GOODYE AGAIN'

Sun. Double Feature—Joan Blondell  
'GOODBYE AGAIN'  
Joan Crawford-Clark Gable  
'DANCING LADY'  
**Washington** Rural at E.  
Wash. St.  
Double Feature  
Joan Marsh  
'HIGH GEAR'

Sun. Double Feature—Ralph Ince  
'GORILLA SHIP'  
Dick Powell  
'COLLEGE COACH'  
**TACOMA** 2448 E. Wash. St.  
Double Feature  
James Dunn  
'TAKE A CHANCE'  
'LIFE OF JIMMY DOLAN'

## GUILD DANCER



Sally Williams

—Photo by Platt.  
Guests at the Sunnyside Guild ball Monday night will be entertained by charming Sally Williams, dancer.

## At Art Institute

The Tabernacle Presbyterian church choir, under the direction of Fred Newell Morris, will give the next program in the series of twilight musicales arranged by the John Herron Art Institute tomorrow at 4:15 o'clock.

The choir will be assisted by Mrs. Walter E. Wallace, soprano; Miss Patricia M. Kennedy, alto; Mr. Perry M. Rush, tenor; Mr. Fred Newell Morris, bass, and Mr. Paul R. Matthews, accompanist.

The program dealing with the development of the oratorio will be interpreted by Mrs. Lenora Coffin, and is as follows:  
Chorus—"Let All the Angels of God Worship Him." (Messiah).....Handel  
Quartet—"I Have Lamented for The Salvation." (Stabat Mater).....Rossini  
Quartet and Chorus—"Requiem and Kyrie." (Mozart).....Verdi  
Vaughn L. Cornish assisting baritone with quartet.

Chorus—"Virgo Virginum Praeclara." (Stabat Mater).....Dvorak  
**EAST SIDE** 1506 Roosevelt  
Double Feature  
Barbara Stanwyck  
'EVER IN MY HEART'  
Spencer Tracy  
'THIS MAD GAME'

Sun. Double Feature—Gloria Stewart  
'INVISIBLE MAN'  
Wallace Beery-Edna Raff  
'THE BOWERY'  
**Paramount** New Jer. at E. Wash.  
Double Feature  
Adolphe Menjou  
'WORST WOMAN IN PARIS'  
'FLAMING GOLD'

Sun. Double Feature—Jackie Cooper  
'LONE COWBOY'  
Jack Pearl  
'MEET THE BARON'

**PARKER** 2930 E. 10th St.  
**EMERSON** 4620 E. 10th St.  
Double Feature  
Edna May Oliver  
'IT'S GREAT TO BE ALIVE'  
'CAPTURED'

Sun. Marie Dressler-Lionel Barrymore  
'HER SWEETHEART'  
**TUXEDO** 4620 E. New York  
Double Feature  
Tim McCoy  
'HOLD THE PRESS'  
James Dunn  
'TAKE A CHANCE'

Sun. Double Feature—Clara Bow  
'HOOPLA'  
Four Major Bros.  
'DUCK SOUP'  
**SOUTH SIDE** Prospect & Shelby  
Double Feature  
Rev. Bell  
'THE FUGITIVE'  
'THIS DAY AND AGE'

Sun. Double Feature—James Cagney  
'MAYOR OF HELL'  
Jack Pearl  
'MEET THE BARON'

**Fountain Square** Double Feature  
Wm. Powell  
'PRIVATE DETECTIVE NO. 62'  
'ALIAS MARY SMITH'  
Sun. Double Feature—James Dunn  
'JIMMY AND SALLY'  
Joe E. Brown  
'SON OF A SAILOR'

**Lincoln** 1105 S. Meridian  
Double Feature  
Neil Hamilton  
'LADIES MUST LOVE'  
'I WAS A SPY'

Sun. Double Feature—Lillian Harvey  
'MY LIPS BETRAY'  
Marie Dressler-Lionel Barrymore  
'HER SWEETHEART'

**Roosevelt** 1429 S. Meridian  
Double Feature  
El Brendel  
'OLSEN'S BIG MOMENT'  
'THUNDERING HERD'

Sun. Double Feature—Madge Bellamy  
'RIOT SQUAD'  
John Boles-Margaret Sullivan  
'ONLY YESTERDAY'

**Avalon** 2119 Prospect St.  
Double Feature  
James Cagney  
'MAYOR OF HELL'  
'GOOD COMPANIONS'

Sun. Marie Dressler-Lionel Barrymore  
'HER SWEETHEART'

# CITY INDUSTRIAL NEWS OF THE WEEK

## REFRIGERATION BY ICE KEEPS AIR IN MOTION

Polar Representative Says  
No Other Method Can  
Give Circulation.

Ice—just any ice—is not necessarily pure, healthful and wholesome, according to Mrs. Harriet Gray of the Polar Ice and Fuel Company. Research by prominent chemists and refrigeration engineers has definitely proved that all ice in melting has the same quality of absorbing air.

This fact is the basis of modern ice refrigeration design. Through this principle, many features are offered in an ice refrigerator which are unattainable otherwise.

As an example, the air in an ice refrigerator is "washed" continually as in a properly air-conditioned theater during the summer. What this action means to foods, says Mrs. Gray, is that they are not tainted with the flavors or odors of the other foods in the refrigerator. This results from rising of warm air which comes in contact with the large piece of ice and the major portion of foreign odors and gases are absorbed during the melting process, and as this air becomes cool, it falls, while warmer air is continually taking its place, making a continual circulation of air within the cooling unit.

The block of ice, naturally does not absorb these odors; they are absorbed by the outer film of water which is at all times cleansing the whole of the ice, and passing down the drain and away from the cooling section.

The Polar firm, according to Mrs. Gray is a firm believer in the thought that one's health should be considered as much a luxury as an abundance of ice for any occasion, and with this thought in mind, the company maintains a water purification plant which is considered by experts to be one of the most efficient in this section of the country.

"In fact," she says, "several large local manufacturers here, who must use pure water after many chemical analyses, have found the water used to make Polar Ice superior to any other obtainable."

## DARK PAINT TENDS TO LOWER CEILINGS

Suggested in Modernizing  
High Old Rooms.

Ceilings painted in dark colors to contrast with light walls are enjoying a vogue in modern interiors, particularly in the conversion of old, high-ceilinged rooms.

A dark ceiling, decorators declare, lowers the apparent height of the room, and is useful when a modern horizontal movement in decoration is to be emphasized.

Room color schemes suggested by the current issue of House Beautiful are a flat midnight blue ceiling to give an atmospheric vanishing quality; a sapphire blue ceiling, pale gray walls, dark brown rug, lemon yellow and warm terra cotta upholstery; deeper blue or black ceiling with walls of pale yellow, pale blue, pearl gray, dusty pink or white; cerulean blue ceiling with white walls; brown lacquer ceiling with off-white walls; raspberry, for a bouclier ceiling, with old blue, white and touches of magenta as the colors elsewhere.

## PERFUME MAY BE USED IN PAINTS OF FUTURE

Chemist Considers Harmony of  
Color and Odor.

Paints and varnishes in the future may be bought by odor as well as color, if recent experiments with perfumed paints become more highly developed, according to Dr. Henry A. Gardner, paint research chemist.

"It might be interesting to buy red lacquer with a carnation odor or orange enamel with an orange-blossom scent," Dr. Gardner says. "Certain experiments with synthetically perfumed paint have proved that the idea has possibilities. Most persons, however, do not object to the natural odor of paint and varnish, but associate it with ideas of cleanliness and sanitation."

## PUBLIC LIKES MURALS

Artists Paid \$85,000 for Work Under  
CWA Program.

By Times Special  
WASHINGTON, D. C., Feb. 10. — Salaries amounting to \$85,000 were paid to artists throughout the country during the last week in January. So enthusiastic has been the response of the general public to mural decorations, it was pointed out the federal administration during the same week advanced only \$175 for materials—canvas, paints and scaffolding. Most of the materials were provided by the institutions or municipalities benefiting by art work.

Laughter Proves Fatal  
By United Press  
EVERETT, Mass., Feb. 10.—Mrs. Locomia Duncan, 55, died laughing at "Henry's Wedding," a school play, at Parlin Junior high school last night. Doctors said her prolonged laughter induced a heart attack.

## Favorable Attitude of Public Declared Strong Contribution to Progress Recorded by Dentistry

Fear of Treatment Ceases  
to Exist, Declares Dr.  
W. H. Hanning.

Asked what in his opinion had been the greatest single factor in the improvement and development of the science of dentistry during the past twenty years, Dr. W. H. Hanning, prominent Indianapolis dentist, answered:  
"Beyond a doubt the greatest development for good in modern dental work has been the attitude of the people themselves in their acceptance of dentistry. People no longer look upon necessary dental work with dread and apprehension. The average layman of this generation does not procrastinate and prolong the proper care and treatment of his teeth because of fear and loss of time. People of the present day realize the importance of taking care of their teeth and they also know that application of the highly developed dental science of 1934 can be practically painless and that thorough treatment can be had without disrupting ordinary pursuits of life."

**Advertising Aided Science**  
Dr. Hanning further explained three factors have contributed mainly to this changed attitude on the part of the American people. First, the great advancement of dental science by the profession itself; second, the educational campaigns conducted in the public school system as to the necessity of the proper care of teeth, and third, the tremendous advertising activities of manufacturers of dental creams and supplies.

The American people today really are dental minded and will sacrifice most of the so-called luxuries of life, if necessary, in order to have their teeth cared for properly.

When asked what his greatest personal contribution to his chosen profession had been, Dr. Hanning promptly answered by saying one word, "Maxoline." He went into a detailed and technical discussion of "Maxoline."

**Describes "Maxoline"**  
After some thirty minutes of high-sounding medical terms, it finally developed that "Maxoline" is a painless method of extraction and treatment. Dr. Hanning and his staff of laboratory assistants have spent more than ten years developing this newest addition to dental science. "Maxoline," according to Dr. Hanning, is one of the reasons why people no longer dread the dentist's chair.

The Hanning Brothers' dental clinic, second floor of the Kresge building, is one of the largest dental offices in the middle west. The suite comprises eight operation booths. Complete laboratory and one of the most beautifully appointed reception rooms in the city is maintained. Hanning Brothers have branch offices in South Bend, Terre Haute and Muncie.

## Old to New Furniture Finish Can Be Restored.

OLD furniture that has grown shabby may be restored easily to its original beauty by a renewal of the natural wood finish.

The suit of a covered home management specialist at South Dakota state college.

The old finish should first be removed with a paint or varnish remover. Sand the wood until it feels smooth and satiny.

Oil all dust and apply a mixture of two parts boiled linseed oil and one part turpentine with a soft cloth. Heat the mixture in a pan of hot water. All excess oil should be wiped off immediately with a dry cloth. After forty-eight hours the process should be repeated until the wood will absorb no more oil. Rub the wood well after each oiling.

The oil brings out the beauty of the wood and enriches its color by darkening it. On some woods the color becomes too dark if the suit of a covered home management specialist at South Dakota state college.

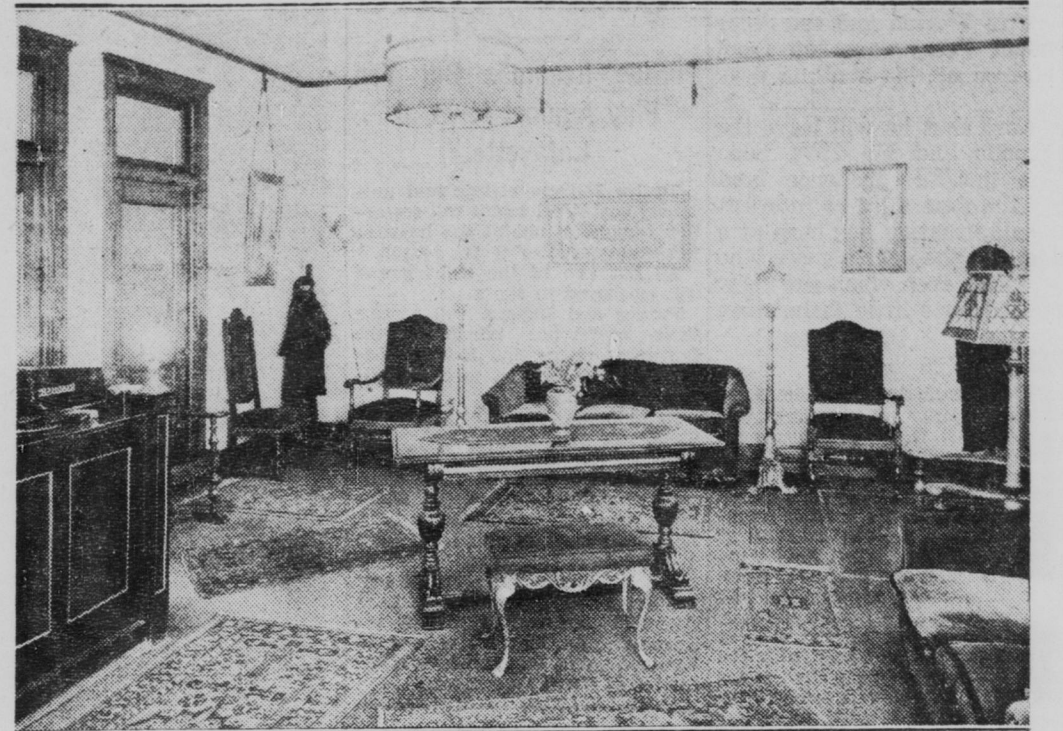
These woods should be oiled only to the desired color, and a mixture of one part white shellac to one part denatured alcohol should be applied. When this is dry, rub the wood with fine sandpaper to remove the surface shellac.

Finish the wood by rubbing with a small amount of wax in some cheesecloth. Let the wax stand for ten minutes and then polish the wood with a soft piece of flannel. Several coats of wax may be needed to give the desired finish.

**Spacious Illusion Created**  
Small apartments or rooms with cut-up wall space are most effectively decorated by painting walls, ceilings and woodwork in the same tint. This manner of treatment minimizes uneven wall spaces, and if the color chosen is light and warm, gives the room a spacious appearance.

**NOTICE—Manufacturers and Jobbers**  
SPACE FOR RENT  
Complete Housing Facilities for Large or Small Plants  
Private Switches, Served by Belt R. R. and Traction Lines Connecting With All Railroads.  
Watchman Service Free  
Indianapolis Industrial Center  
19th St. and Martindale Ave.  
CHerry 1945

**The Year-Around American Family Dessert**  
**Velvet ICE CREAM**  
Eat It Daily for Its Concentrated Food Value  
Look for Poster in Dealer's Store Announcing New Velvet Special



Reception room of Hanning Brothers, Dentists, in the Kresge Building.

## Orders for Graham Paige Autos Set New High Mark

Production Stepped Up to  
Meet 70 Per Cent Gain  
in Demand.

By Times Special  
DETROIT, Feb. 10.—With the largest single day's orders in the past four years on hand last Monday, and production stepped up to meet a 70 per cent increase in orders during January, 1934, over those of the same month of 1933, the Graham Paige Motors Corporation is embarked on one of its most ambitious programs in the history of the organization, J. B. Graham, president, announces.

The record number of orders, said Mr. Graham, poured into the factory on Monday, climaxing a steady increase which began shortly after the new Graham cars for 1934 were introduced.

The increase in January, Mr. Graham reported, surpassed the

**WASHINGTON ALSO FIRST  
IN HOME REMODELING**

Changes Made at Mt. Vernon Over  
Period of Thirty Years.

By Times Special  
WASHINGTON, D. C., Feb. 10.—George Washington, father of his country, also was father of home renovators and for almost twenty-nine years of his life supervised alterations, repairs and upkeep, painting of his Mt. Vernon home, according to the February issue of Home and Field, which is combined with House Beautiful.

Describing Washington's constant interest in modernization, the magazine tells of the gradual evolution of the Mt. Vernon home, a remodeling project which lasted for nearly three decades.

"Mt. Vernon, then (1752) simply a story-and-a-half house on the banks of the Potomac, passed to him by inheritance," the magazine states. "He was 20 and more interested in a dead Indian than a house. Five years later, however, he had become engaged to Martha Curtis and his attitude changed. So, too, did Mt. Vernon with a second story and much renovation."

"Up went the roof. It was now a two-story-and-attic structure. The foundations and chimneys were rebuilt with bricks fired on the place. New shingles were laid. The old exterior boards were replaced with new ones beveled to resemble cut stone, and the whole was painted white. The final steps brought a pair of wings to the ends and a pillared portico across the east front."

**ROTARY CLUB TO HEAR  
CITY PARKS LEADER**  
A. C. Sallee to Explain Beautification Program Tuesday.

A. C. Sallee, Indianapolis parks superintendent, will be the principal speaker at the Rotary Club luncheon Tuesday in the Claypool. Mr. Sallee will speak on "Our Ten Million Dollar Park System."

He will present a comprehensive summary of the park department's work, and will explain the program of city beautification which has been developed.

**A Good Job  
Offered**  
Wanted party with \$3,000 working capital and necessary qualifications to organize sales for elaborate program and setup. Investment protected by merchandise. Address

Roy O. Stringer Co., Ltd.  
621 N. Noble St.

**AUTO  
REPAIR**

By  
Madden Cople Co.  
733 N. Capitol Ave.  
L-6524  
Means  
Satisfaction!

**Hanning Bros.  
Dentists**  
WASHINGTON &  
PENNSYLVANIA STS.  
KRESGE BLDG.

greatest expectations of Graham officials, and all indications point to a continued increase for February. The up-swing followed Graham's entrance into the wider marketing field through its announcement of lower prices and through the introduction of the Graham super-charger for the first time on any medium-priced automobile.

"On Feb. 1, our orders on hand were 70 per cent greater than those of the same date in 1933," he said. "In the first few days of February, the orders continued to climb, being climaxed with the record number received Monday. From these orders, and from reports from our dealer organization throughout the country concerning the public response to the new Graham, it seems plain to us that we are going to have our biggest year since 1923."

The increase in orders for the new Graham, and the stepping up of February production, has brought a corresponding rise in employment at the Graham plant. Employment on Feb. 1, 1934, was 72 per cent higher than employment on the same date in 1933.

"Graham dealers are more enthusiastic ever the outlook than ever before," said Mr. Graham. "From all parts of the country they are forwarding us enthusiastic reports on the reception accorded the new Graham. With our greatly widened market field due to the new low prices, and with the Graham supercharger, revolutionary new engine development, we feel 1934 is going to be the year in which Graham makes its greatest advancement in public favor."

**FOR ECONOMY  
PLUS QUALITY**  
2,000  
Sheets  
of Finest  
Quality  
Bathroom  
Tissue  
Ostermeyer Paper Co.  
Riley 6902 219 W. South St.

**ENROLL NOW  
Until Jan. 22nd**  
**INDIANA  
LAW SCHOOL**  
University of Indianapolis  
For information, address the  
Sec'y, Riley 3433  
INDIANA LAW SCHOOL  
The SE Market St. Bldg.  
Indianapolis, Ind.

Above All Things  
Buy  
**MONUMENT  
COAL CO.**  
Commercial  
COAL-COKE  
Domestic  
COAL-COKE  
701 E. WASH. ST.  
Lincoln 2233

**INDIANAPOLIS  
-RAILWAYS-**

Established 1887  
**CENTRAL TRANSFER AND STORAGE COMPANY**  
COMMERCIAL TRUCKING WAREHOUSE FORWARDING  
DISTRIBUTING  
209 West South St. RIdley 9384

With "Fisk" Tires  
You Take No Risk  
Investigate "FISK" Quality  
You buy the best when you buy Fisk Tires or Tubes. Their increased tread rubber assures you of longer wear and better service, at very low cost.  
Every FISK Tire is unconditionally guaranteed against faulty workmanship or material.  
**C. H. FRANK TIRE SERVICE**  
Fisk Tire Distributor  
543 E. WASHINGTON RIdley 7878

**GO!**  
By Trackless  
Trolley Car  
**12**  
MINUTES  
DOWNTOWN  
(Illinois and Washington)  
from  
**S. Meridian &  
Pleasant Run**  
14 Min. in Rush Hour  
Cars run every 6 minutes in the rush hour — every 10 minutes during the day and evening. For further information phone Riley 1571.

**INDIANAPOLIS  
-RAILWAYS-**

**GO!**  
By Trackless  
Trolley Car  
**12**  
MINUTES  
DOWNTOWN  
(Illinois and Washington)  
from  
**S. Meridian &  
Pleasant Run**  
14 Min. in Rush Hour  
Cars run every 6 minutes in the rush hour — every 10 minutes during the day and evening. For further information phone Riley 1571.

**GO!**  
By Trackless  
Trolley Car  
**12**  
MINUTES  
DOWNTOWN  
(Illinois and Washington)  
from  
**S. Meridian &  
Pleasant Run**  
14 Min. in Rush Hour  
Cars run every 6 minutes in the rush hour — every 10 minutes during the day and evening. For further information phone Riley 1571.

**GO!**  
By Trackless  
Trolley Car  
**12**  
MINUTES  
DOWNTOWN  
(Illinois and Washington)  
from  
**S. Meridian &  
Pleasant Run**  
14 Min. in Rush Hour  
Cars run every 6 minutes in the rush hour — every 10 minutes during the day and evening. For further information phone Riley 1571.

## Gone, but Not Forgotten

Automobiles reported to police as stolen belong to:  
John Krenner, 1005 Main street, Beech Grove, Ford coupe, 115-306, from Fifth avenue, Beech Grove.

**BACK HOME AGAIN**  
Stolen automobiles recovered by police belong to:  
Doris M. Everett, Lawrence, Ind., Ford coach, found at California and Washington streets.  
Chevrolet sedan, 569-873, found on Massachusetts avenue, one block east of Sherman drive.

A new electrical device is intended to broadcast accurately for the information of ship captains.

**Why is ICE refrigeration  
BETTER!**  
Because it is non-drying.  
Does not rob foods of taste.  
Nor mix food flavors. ICE  
circulates pure air and carries the musty odors down the drain.

**Save With ICE**  
**Polar Ice & Fuel Co.**  
Talbot 0689

**GO!**  
By Trackless  
Trolley Car  
**12**  
MINUTES  
DOWNTOWN  
(Illinois and Washington)  
from  
**S. Meridian &  
Pleasant Run**  
14 Min. in Rush Hour  
Cars run every 6 minutes in the rush hour — every 10 minutes during the day and evening. For further information phone Riley 1571.

**INDIANAPOLIS  
-RAILWAYS-**

**GO!**  
By Trackless  
Trolley Car  
**12**  
MINUTES  
DOWNTOWN  
(Illinois and Washington)  
from  
**S. Meridian &  
Pleasant Run**  
14 Min. in Rush Hour  
Cars run every 6 minutes in the rush hour — every 10 minutes during the day and evening. For further information phone Riley 1571.

**INDIANAPOLIS  
-RAILWAYS-**

**GO!**  
By Trackless  
Trolley Car  
**12**  
MINUTES  
DOWNTOWN  
(Illinois and Washington)  
from  
**S. Meridian &  
Pleasant Run**  
14 Min. in Rush Hour  
Cars run every 6 minutes in the rush hour — every 10 minutes during the day and evening. For further information phone Riley 1571.

**INDIANAPOLIS  
-RAILWAYS-**

**GO!**  
By Trackless  
Trolley Car  
**12**  
MINUTES  
DOWNTOWN  
(Illinois and Washington)  
from  
**S. Meridian &  
Pleasant Run**  
14 Min. in Rush Hour  
Cars run every 6 minutes in the rush hour — every 10 minutes during the day and evening. For further information phone Riley 1571.

**INDIANAPOLIS  
-RAILWAYS-**

**GO!**  
By Trackless  
Trolley Car  
**12**  
MINUTES  
DOWNTOWN  
(Illinois and Washington)  
from  
**S. Meridian &  
Pleasant Run**  
14 Min. in Rush Hour  
Cars run every 6 minutes in the rush hour — every 10 minutes during the day and evening. For further information phone Riley 1571.

**INDIANAPOLIS  
-RAILWAYS-**

**GO!**  
By Trackless  
Trolley Car  
**12**  
MINUTES  
DOWNTOWN  
(Illinois and Washington)  
from  
**S. Meridian &  
Pleasant Run**  
14 Min. in Rush Hour  
Cars run every 6 minutes in the rush hour — every 10 minutes during the day and evening. For further information phone Riley 1571.

## STORE DISPLAY FIRM REPORTS BUSINESS GAIN

More Than 7,500 Windows  
Trimmed in City