

1926 'PARADISE' SHATTERED BY HEADLINE POLL

'Model' Year in Recovery Drive Just Like Others, Survey Shows.

BY FREDERICK C. OTHMAN
United Press Staff Correspondent

WASHINGTON, Dec. 8.—Administration efforts to restore average prices to levels of 1926 have made that year seem like a golden paradise to which Americans hope to return under the recovery program. But a check-up of newspaper files reveals that even in that year, Americans worried about many things.

Farm relief, taxes, liquor, Communism, scandals, lynchings, high prices—troubled by these and many other things, Americans groused their way through what is now coming to be regarded as the perfect year.

News headlines of December, 1926, revealed:
Farmers Denounce Coolidge Agriculture Program... Mae West Appears in "Sex" at Daly's Sixth Street Theater... Lynch Negro at Aiken, S. C. Coolidge Ponders Tax Bill... Philadelphia Sesquicentennial Exposition Loses \$20,000,000...

Farm Relief Requested
Cotton Growers Demand Equality... \$45 Overcoats Reduced to \$29.50... Destroyers Ordered to Hankow... Wayne B. Wheeler Says, "The People Are Behind the Eighteenth Amendment"... The Farm Bureau Federation Demands Adoption of the McNary-Haugen Bill... Alleged Communists Riot... Baby Starves to Death... Salt Lake City Locksmith Tries Vainly to Unlock His Front Door... Senatorial Committee Considers the Teapot Dome Scandals... Hall-Mills Trial Proceeds with New Sensations... Aggressive Buying Steadies Stocks... United States Steel 147 1/4... Pound Sterling \$4.84... U. S. Treasury 4 1/2's \$109.27... Middle West Utilities (Insull) 105 1/2... Cotton 13 Cents Per Pound... Want Ad Sections Skippy... Wanted: Restaurant Cashier, Lady, \$10 and Two Meals... Wanted: Plasterer, \$14 a Day...

Enter Theodore Dreiser
Labor Troubles in East... Theodore Dreiser Writes "An American Tragedy"... Brewery Enters Cheese Business... Collect Charity Funds for Near East Relief... Shoes \$10 a Pair... Silk Hats \$18... Suits, Special Sale, \$45... Coffee

DOCTOR TO TALK



Dr. John G. Benson (above), superintendent of the Methodist hospital and executive secretary of the Methodist hospitals of Indiana, will address the Christmas dinner meeting of the brotherhood of the First Baptist church, Monday night. His subject will be "The Man Power of the Church."

The Earl Howe Jones trio will play at the meeting and vocal selections will be sung by J. J. Albion and George Kadel. Community singing will be directed by Dr. Robert White Blake.

PARTY FOR CHILDREN

Castleton P.-T. Association Will Give Christmas Fete.

The Castleton Parent-Teacher Association will give a Christmas party for the children Friday night. Members of the committee in charge are Mrs. Margaret Alyea, Mrs. Herminie Whitsett, Mrs. Mabel Smith, Mrs. Dora Messersmith and Mrs. Edna Roberts.

49 Cents a Pound... Bacon, 54 Cents... Prunes, 10 Cents... Super-Super-Extra-Special Radio, Six Control Dials, \$89.50... Five Rooms and Bath in Flatbush, \$6,250... Six-Cylinder Sedan, Balloon Tires Extra, \$1,185... Agriculture Petitions Congress... International Harvester Common Reaches New High at 149... May Wheat \$1.41 1/2 per Bushel... May Corn 83 1/2 Cents... Women Will Never Return to Long Skirts... Coolidge Reduces Public Debt... \$5 Cover Charge at Le Perroquet De Paris Night Club... Al Smith Denounces Republicans... Congressional Drys West \$11,990,965 From Wets for Prohibition Enforcement.

(Copyrighted, 1933, by United Press.)

SENATE STOCK MARKET PROBE MAY CONTINUE

Plans to End Investigation Expected to Stir Congress Fight.

By United Press

WASHINGTON, Dec. 8.—Plans to wind up the Senate stock market investigation early next month appeared today to be heading toward a fight on the floor of the Senate to force the show to continue.

Investigators said "literally thousands" of requests had been received for inquiry into local banking and securities situations.

Organizations or individuals in Toledo, O., San Francisco and other cities have made such requests as a result of the committee's decision to investigate closed banks in Detroit and Cleveland.

Senator Henry Shipstead (Farmer-Labor, Minn.) appealed to Chairman Duncan Fletcher to investigate the Northwest Bank Corporation and the First Bank Corporation of Minneapolis, holding companies operating groups or chains of banks in Minnesota and adjoining states.

Former Case Recalled

"The state has no supervision over these holding companies," Senator Shipstead said. "They are incorporated in Delaware. I want an investigation to determine whether legislation is needed to meet a situation under which holding companies may operate banks and sell their own stock beyond the control of state law."

Fletcher said the matter would be referred to the committee. Senator Shipstead's reference to Delaware incorporation recalled that Harvey C. Couch, now an RFC director, and others have been shown to have gone to Delaware when they wanted to extend powers of a railroad company with headquarters in Arkansas.

It was said the Delaware charter granted to Mr. Couch's railroad authority to perform desired functions in Arkansas or any other state in the Union except Delaware itself.

Detroit Probe Dec. 18

Senator Shipstead intimated a committee refusal to investigate the northwest banking situation would prompt a senate resolution next month directing that the inquiry be made. Investigation of the Associated Gas and Electric Company has been scheduled but senators said it would

be cut short unless the evidence developed securities of corporate practices not revealed in previous inquiries.

The Detroit bank investigation will begin Dec. 18. The committee hopes to conclude early in January with examination of Richard C. Whitney and other officers of the New York Stock Exchange.

Senator Philip L. Goldborough (Rep., Md.) said the committee should proceed immediately with the preparation of corrective legislation for submission to congress.

ENGRAVER SPEAKS AT AD CLUB'S MEETING

Photography Is Stressed by Patterson in Address.

Importance of photography during the research period in the development of a product for use in an advertising campaign was stressed by Carl D. Patterson of the Indianapolis Engraving Company in an address yesterday before the Advertising Club in the Columbia Club.

Mr. Patterson, who spoke on "Photography in Advertising," told of results obtained by local concerns of various forms of commercial photography recently developed from miniatures to gigantic photographs.

TRAYLOR HEADS HIGHWAY MEN

Evansville Man Elected President of State Constructors.

Edgar Traylor, Evansville, was elected president of the Indiana Highway Constructors at the closing session of the group's annual convention yesterday.

Other officers named were John J. Quinn, Bedford, vice-president; Fred Cunningham, Indianapolis, secretary; and W. M. Holland, Indianapolis, executive secretary.

About 250 contractors attended the convention. Speakers included James D. Adams, state highway commission chairman, who pledged that the contract method of road work will be resumed as soon as the present unemployment emergency is ended, and Virgil M. Simmons, state conservation director.

The number of seeds produced in a year by the average radish is about 10,000.

MILLERS CORRECT GLASSES

Miller's Reputation for Correct Fitting Has Been Established by Years of Careful, Expert Attention to Every Customer!

Dr. West, registered optometrist, will examine your eyes thoroughly and scientifically. If glasses are required, you can pay out of income in convenient weekly small amounts.

QUALITY — LOW PRICE — EASY TERMS

Visit Miller Before You Buy

MILLER JEWELRY CO. INC.

21 North Meridian Street—S. E. Cor. Meridian and the Circle

SATURDAY—SUNDAY—MONDAY

3 DAY SENSATION

INTRODUCTORY OFFER

Improved Moto-Sway Lubrication

Reg. \$1.25 Service

It's a SENSATION! SPECIALIZED LUBRICATION under ACTUAL driving conditions. The only method that loosens up frozen shackle bolts, spring leaves, etc. Special high quality lubricants and pressure guns used.

45c

MILLER TIRES VESTA BATTERIES ARVIN HEATERS

EASIEST TERMS IN TOWN

BATTERY CHARGING—RENTALS—ROAD SERVICE

ROSE TIRE CO. INC.

930 N. MERIDIAN ST.—RI. 8355

OPEN 7 A. M. TO 9 P. M. INCLUDING SUNDAY

Get POLICE CALLS

and Regular Broadcasts from All Over the Country

Crosley Radios

\$1 DOWN

Delivers Your Choice of All the Newest 1934 Models

Here Is Your Opportunity

to give your home a real Christmas treat. Pay just a little each week and never miss the money.

\$18.50 Up

\$1.00 Delivers the Following

Nationally Advertised Radios
—RCA—Majestic—Philco—Atwater Kent—Stewart—Warner—Spartan—Zenith and Apex. See these before you buy!

Chicago Jewelry Co.

203 E. WASHINGTON ST. Opposite Courthouse

2,000 SUITS—2,000 O'COATS

Unredeemed—Large Assortment

Many Nationally Known Makes Brand New

SUITS—TOPCOATS—O'COATS

All Styles—All Sizes

These values are almost unbelievable! Each suit, each overcoat, each topcoat is not only an outstanding example of fine workmanship—but thoroughly reliable quality that insures satisfaction. These suits, topcoats and overcoats consist of worsteds, Meltons, tweeds, flannels, chevrons, serge and other fine qualities. Don't fail to see these in our new enlarged Men's Suit and Coat Department.

\$1 Deposit will hold any suit or coat.

Sacks Bros. Loan Co.

Up

Corner Indiana Avenue and New York St. Open Evenings. Riley 5994.

Down at Banners Whitehill's Stairs

STORE OPEN TONIGHT 7 TO 9:30

A Complete Living Room OUTFIT AT ONLY \$98.

Pay as Little as \$1 Weekly

Pieces May Be Purchased Separately

KROEHLER SOFA AND CHAIR in popular Charles of London style, covered in Green or Rust Homespun. Kroehler lifetime guaranteed construction at an unbelievably low price **\$59.50**

COFFEE TABLE, walnut finish, Duncan Phyfe design with oval top **\$2.95**

AMERICAN ORIENTAL RUG, 9x12 size, fine Oriental patterns, lustrous colors **\$19.75**

END TABLE, walnut finish, sturdily built, convenient shelf for magazines **\$1.45**

MAGAZINE RACK, walnut finish, smartly styled **\$1.65**

OCCASIONAL CHAIR, shield back type, Graceful fluted legs. Shaped arms. Green or rust rayon tapestry covers **\$7.85**

SMOKING STAND, with newspaper and magazine rack beneath. Walnut finish. Complete with fixtures and glass tray **\$3.95**

FLOOR LAMP, attractive 3-candle style with attractive metal base and parchmentized shade **\$5.50**

BRIDGE LAMP, bronze finish base and parchmentized shade, attractively decorated **\$4.95**

Other Unusual Downstairs Values

Walnut Footstool • Smoker

Choice of colors in mohair, velour or tapestry cover. Sturdy frame, walnut finish.

\$1

Occasional Table \$4.95

Attractive table in fine walnut finish—at an extremely low price.

Finished in walnut, complete with fixtures and glass tray. A spacious humidor and convenient handles for carrying. An appreciated gift **\$5.95**

Big Lounging Chair \$19.75

Covered in a wide selection of smart, new, plain or floral Tapestry. Of Kroehler lifetime-guaranteed construction!

Spinet Desks

As Low as **\$9.50**

For the smart living room, bedroom or den. Small enough to take only a little space in the room, yet with ample room for freedom of use. Priced as low as \$9.50.

TERMS TO SUIT YOUR INCOME

STORE OPEN TONIGHT 7 TO 9:30

The Banner-Whitehill LINCOLN 4561

DOWNSTAIRS STORE

31 South Meridian

Also at Our Fountain Square Store, 1054 Virginia Avenue

Family Washing Minimum 51c Delivered Damp—Ready to Iron

Monday 5c lb. Balance 4 1/2c lb. Tuesday 5c lb. Balance 4 1/2c lb.

Riley 7373 **PROGRESS LAUNDRY**

We Guarantee to Match Your Coat With a New Pair

PANTS

We manufacture right in our own shops—Lowest Prices! Perfect Match Pants Co.

323 W. Washington St.

SPECIAL PAINLESS 50

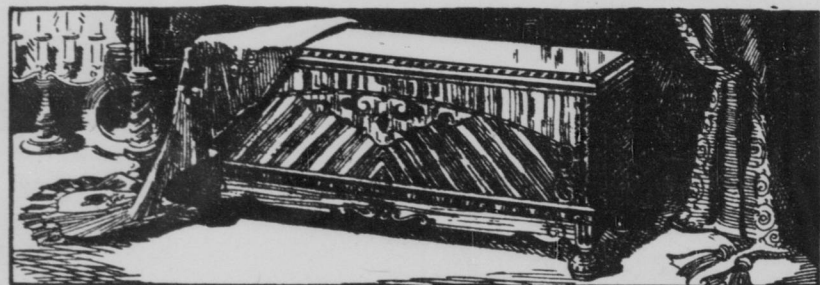
THE PEOPLES DENTISTS

36 1/2 W. WASHINGTON ST.

The Gift of Romance

Here is the ideal gift for sweetheart, daughter, wife or mother. A genuine Lane Cedar Chest is not only the most romantic of gifts. It is the most practical. Exclusive and patented construction features make every Lane Chest aroma-tight—moth-proof. As evidence of this, you receive free an Aetna Insurance Policy against moth damage with every Lane Chest.

LANE Dowling Dowry Chest



A Moth Insurance Policy included with every LANE Cedar Chest

The LANE Dowling Dowry Chest is an adaptation of the original Dowling Dowry Chest, even to the rare oriental veneers. Also, it is more. Beneath its rich exterior is fragrant red cedar, 3/4 inch thick, and the exclusive LANE construction features which make it aroma-tight and moth-proof. That's why it carries a free Aetna Insurance Policy against moth damage.

Other Cedar Chests Priced Upward From \$14.50

Our Special Christmas Credit Plan Will Make It Easy for You to Pay Out of Income

OPEN MONDAY AND FRIDAY NIGHTS, 7 TO 9:30

Banner-Whitehill HOME FURNISHINGS

31 SOUTH MERIDIAN STREET LINCOLN 4561

Also at Our Fountain Square Store—1054 Virginia Ave.

Read Times Want Ads for Gift Suggestions