

NEWS OF MOTOR WORLD

WILLARD FIRM LISTS SHIFTS IN PERSONNEL

C. H. Gibney is Advanced
From Controller to
Secretary.

According to N. G. Wolf, district manager for Willard in this section, several important changes in executive personnel have just been announced by the Willard Storage Battery Company of Cleveland, C. H. Gibney, who has been office controller and assistant treasurer for a number of years, has been elected vice-president and secretary.

Harry G. English, who came to the Willard credit department in 1918, succeeds Mr. Gibney as assistant treasurer. Mr. English has made several advancements during his fifteen years with Willard, being appointed cashier in 1920 and credit manager in 1923. He will continue supervision of the credit department in his new capacity.

Harley A. Gardner has been recalled from South Africa, where he has been doing special work for Willard, to become assistant credit manager. Mr. Gardner has been with Willard since 1927, when he was made office manager of the Cleveland branch. He spent several years in the sales department as a business counselor, and in 1931 was transferred to the Willard credit department in California.

URGES USE OF LIGHTER OILS

Standard Research Worker
Explains Points to Be
Considered.

Old ideas that gravity, fire and flash point were of importance in judging good motor oil have been cast aside and in their place is definite knowledge that satisfactory cold weather service depends largely on three things:

Proper viscosity or body, neither too thick or too thin.

As little change in body as possible with changes of temperature.

Free pouring at low temperatures. This is the view expressed recently in a Science Service radio address by Dr. Robert E. Wilson, vice-president in charge of research and development, Standard Oil Company (Indiana).

The tendency on the part of motorists to use heavier oils than officially recommended is condemned by Dr. Wilson. Any small saving it may effect in consumption cost is more than offset by greater starting difficulties and waste of gasoline due to higher friction loss in the engine.

"The oil which thickens up the least at low temperatures or thins out the least at high temperatures is the one best adapted to operating over a wide range as in an automobile engine," he asserted.

NEW SERVICE CHIEF NAMED BY SCHOTT

Carl F. Haas Backed by
Long Experience in
Auburn Work.

Appointment of Carl F. Haas as service manager of the Schott Automobile Company, Auburn distributors located at 2004 North Meridian street, was announced recently by "Monty" Montgomery, sales manager.

Mr. Haas comes to the Schott company with plenty of Auburn servicing behind him, having spent the last ten years specializing in that field. Although operating a servicing business of his own for the last two or three years, he formerly was service manager of the Updyke Automobile Company, former Auburn distributors.

According to Mr. Montgomery, appointment of Mr. Haas is in line with a recently adopted plan to expand the service department in both main power and equipment to service the many Auburn and Willys owners in Indianapolis.

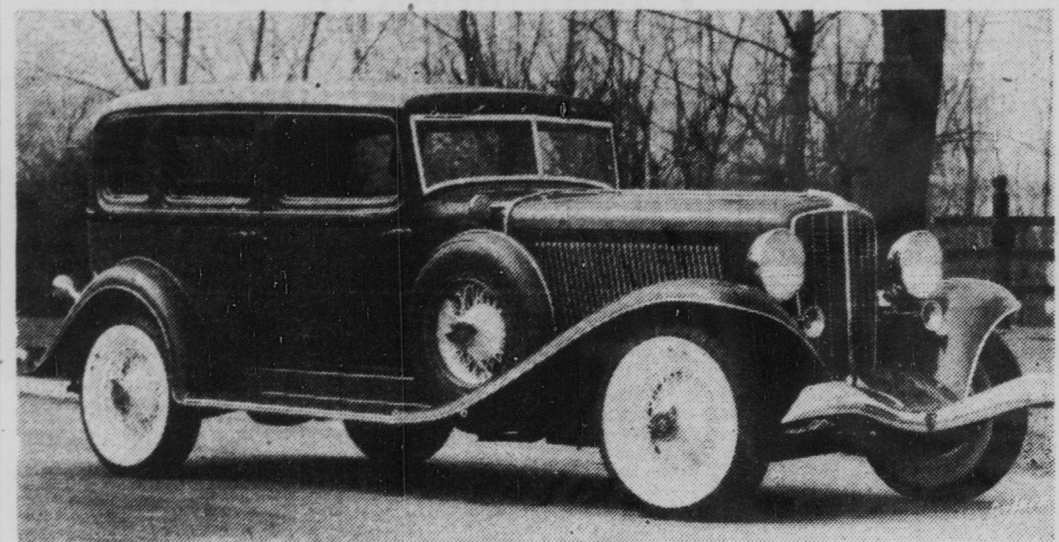
COLDS Go Overnight

When You Take The
Right Thing!

A cold doesn't have to run its course and expose you to serious complications. A cold can be routed overnight if you go about it the right way. First of all, a cold being an internal infection, calls for internal treatment. Secondly, a cold calls for a COLD remedy and not for a "cure-all."

Grove's Laxative Bromo Quinine is what a cold requires. It is internal and direct—and it does the four things necessary. It opens the bowels, combats the cold germs and fever in the system, relieves the headache and grippiness and tones and fortifies the entire system. Anything less than that is taking chances with a cold. Get Grove's Laxative Bromo Quinine at any drugstore, 30c and 50c. Ask for it by the full name and beware of dealers who offer substitutes.—Advertisement.

Auburn Dual Ratio Stands Test on Tour of Southeastern Indiana



Shown above is the Auburn 12 de luxe sedan described in this article, which with other Auburn models is on display at the show rooms of the Schott Automobile Company, 2004 North Meridian street.

Hilly Section Well Suited to Selective Gear Motoring.

BY STURGE WELLS
Times Automobile Editor.

This week's drive while not including a visit to any of the state parks, lent just as much color and "back to the soil atmosphere," because it led over many lightly traveled county roads. In fact, if one has any particular desire to see actual life "down on the farm," there is only one way to accomplish it, and that is to stick to the back roads, mud and all.

Starting out over Road 52 we drove through Rushville, passing over its quaint old covered wooden bridge, continuing on to Brookville, and then doubled back via Connersville, and any number of hamlets and vil-

lages, finally making a complete circle back to Road 52 again.

The real reason for all of this back country driving leading up and down winding hills and along the banks of White river, was to test out one of Earl Schott's and "Monty" Montgomery's big Auburn twelve-cylinder sedan.

Mr. Schott and Mr. Montgomery, head and sales manager, respectively, of the Schott Automobile Company, Auburn distributors for this territory, said:

"Take a drive in this car and see what a surprise you have in store for you, especially if you never have driven a car with dual ratio before."

To those who are in the "same boat" as I was before having this exclusive Auburn engineering development known as dual ratio explained to me, it all sums up to something like this. The principle is, it enables one the choice of driving in two gear levels known as high and low, by merely setting a little gadget on the dash, which operates in conjunction with the clutch.

High ratio is for high speed driving, and is recommended for touring along highways in either flat or rolling country, where it is not a question of needing of power to pull hills. This gear's ratio is stepped up, and while it automatically cuts down the speed of the motor, at the same time it increases the road speed of the car.

The most comparable thing to this feature, is the gearing used on bicycles. Going back to our cycling days, one will recall the owners of the bikes with the largest sprockets were the ones who could attain the greatest speed, yet at the same time not pedal as hard as the riders with small sprockets trying

to keep pace. However, on hills and steep inclines it was an entirely different story, with the small sprocket bikes setting the pace.

Thus, low on dual ratio steps up the speed of the motor thereby increasing the power, but cuts down on the road speed of the car proportionately.

The most impressive thing to me about this feature is the surprising high speed one can travel at in high ratio without realizing it. For instance, at fifty and sixty miles an hour, the sound of the motor leads one to believe that the speedometer reading should be in the neighborhood of thirty or thirty-five miles an hour.

Moreover, it is claimed by the engineers who conceived this idea that dual ratio not only saves wear and tear on the motor, but also reduces fuel consumption considerably, which in itself is a big item.

SELLING CHEVROLETS

O. Verne Sholtz
The appointment of Sholtz Motor Company, Inc., 5436 East Washington street, as a new Chevrolet dealer for the east end is announced by E. W. Berger, manager of the Indianapolis zone of the Chevrolet Motor Company.

This new dealership is headed by O. Verne Sholtz, who has been actively identified with the local automobile field since 1920, when he joined Steinhart Cadillac Sales Company. In 1922 he joined the Carr Automobile Sales Company, where he remained until 1929, when he formed his own company known as Sholtz Motors, Inc., at the same address as the company now occupies.

A modern service department, a department with a full line of Chevrolet parts and a remodeled showroom with a complete line of new cars on display, feature the new dealership.

CARBURETORS, WIRING NEED WINTER WORK

Cold Weather Causes Trouble to
Cars, Connell Says.

Cold weather has made car owners realize the great importance of having their carburetors and ignition systems adjusted. Tom Connell Inc., 508 North Capitol avenue, is one of the most expert service shops for carburetors and ignition systems in the city. Tom Connell, president of the corporation, has a reputation of doing service work with a guarantee that stands.

With careful servicing of carburetors immediately before winter arrives much inconvenience and expense would be saved the average motorist. The first cold wind usually sends rush orders to repair shops causing undue waiting because of the inability to get prompt service during the unexpected customers rush. The Connell company will check the motor of any customers for carburetor and ignition trouble without cost except where repair service is needed.

Tom Connell Inc., also is distributor for the Allen hot water heater.

Prosecutor Post Filled

Governor Paul V. McNutt has named Lowell W. Alsapch prosecuting attorney for Miami county to fill the vacancy caused by the death of Harvey W. Hartley.

SURGEONS GIVE I. U. HOSPITALS HIGHEST RATING

City Institutions Placed on
Approved List by
American Society.

Indiana university hospitals received full rating on the approved list of the American College of Surgeons today in a letter to Dean W. D. Gatch, of the medical school, from Franklin H. Martin, director general of the college of surgeons.

The rating is for 1933 and follows similar ratings in other years. Similar high ratings of the dietary department at the university medical center has been made by the chairman of approved hospital listing of the American Dietetic Association.

The training offered by Miss Lute M. Trout, head of the dietary department, is termed "one of the strongest in the country" by Mary de Garmo Bryan, chairman of the listing committee.

EX-JUDGE PREDICTS GOVERNMENT COLLAPSE

Economic Experiments are Flayed
by Noel C. Neal.

Government experiments in economics will result in one of the greatest collapses the United States ever has endured, Noel C. Neal, former judge of the Indiana appellate court, said yesterday at a meeting of the Marion county council of Republican women, in the Claypool.

No December meeting will be held by the council, according to an announcement made by Mrs. Louis Markum, council chairman. Members will entertain with a theater party at 10 the morning of Dec. 16 for children of the Indianapolis Orphans' Home. The party will be given through the courtesy of Irving Tamer, manager of the Tuxedo theater. Children of the neighborhood may gain admission by bringing some article of food.

Princess Cantacuzene, the former Julia Grant, chairman of the national defense committee, will lead discussions on national defense Friday afternoon.

THE RED CROSS

AMERICAN RED CROSS

777 North Meridian Street, Indianapolis

I desire to become a member of the RED CROSS and
am sending you herewith my contribution \$.....

Name.....

Address.....

Make checks payable to:

ARTHUR V. BROWN, Treasurer

and mail to:

AMERICAN RED CROSS

777 North Meridian Street, Indianapolis

Membership card, button and window flag will be mailed promptly on receipt of remittance.

LEGION AUXILIARY HEADS MEET HERE

National Program Will Be
Outlined at Parley.

Activities of the American Legion national auxiliary will be outlined at a two-day conference of presidents and secretaries from every state starting tomorrow morning at Legion headquarters.

Mrs. William H. Biester Jr., Philadelphia, national president, will preside. Opening session speakers will be Mrs. Biester and Edward A. Hayes, Legion national commander. A dinner Thursday at the Indianapolis Athletic Club will be presided

over by Mrs. William Glenn Suthers, Chicago.

Princess Cantacuzene, the former Julia Grant, chairman of the national defense committee, will lead discussions on national defense Friday afternoon.

CIVIC LEAGUE URGES SCHOOL DECORATION

Should Be Part of Made-Work Program, Is Claim.

The East Thirty-eighth Street Civic League voted last night to ask the school board to redecorate the auditorium of School 1 as part of the made-work program.

A safety program was presented at the meeting by Sergeant Timothy McMahon and a group of children.

KIWANIANS TO MEET TONIGHT, ELECT OFFICERS

Turkey Dinner to Be Held
at Columbia Club;
Pick 2 Slates.

New officers and directors for the year will be elected by Indianapolis Kiwanians following a turkey dinner tonight in the Columbia Club. No luncheon was scheduled for today.

The campaign has been directed by Otto N. Mueller, K-B ticket manager, and Cecil Crabb, Minnehawk ticket manager. Jack Rhoades is election board chairman, assisted by Walter B. Harding, Julian Wetzel, Eli Schloss, and Mervin Hammel, past presidents.

K-B ticket nominees are: President, T. R. Townsend; vice-presidents, Frank V. Hawkins and Harry H. Ochiltree; directors, John M. Caswell, Frank P. Russell and Karl C. Wolfe, and treasurer, Chester T. Spriggs.

Minnehawk nominees are: President, Ira A. Minnick; vice-presidents, William Bosse and Charles Gaunt; directors, Walter Jones, Albert J. Wohlgenuth and Ralph Fenstermaker, and treasurer, George S. Olive.

CHARACTER EDUCATION OUTLINED BY SPEAKER

City Girl Scout Chief Addresses
Pleasant Run P-T. A.

A character education and leisure time program was given at the Pleasant Run P-T. A. supper and meeting last night at the Pleasant Run school by Miss Ann Hathaway, Indianapolis Girl Scout director, and six Girl Scouts.

Blue ribbons were awarded five children, Richard Weinings, Kenneth Cannady, Patricia Burris, Roberta Mae and Marjorie Horsley, found 100 per cent perfect in the summer roundup examinations.

PRACTICAL? Every lesson filled with new FUN? recipes, reliable information. See the Parade of Foods and other interesting features. EVERYTHING IS FREE!

The Indianapolis Times NEW and DIFFERENT COOKING SCHOOL

We thought once of calling this a Cooking School de Luxe, because it has so many wonderful features, but we discarded the idea for fear you might think the lessons weren't practical! But PRACTICAL they ARE—there isn't a recipe or a suggestion that you can't duplicate right in your own home. And does Miss Chambers know her foods and how to prepare them! One glance at her swiftly moving hands as she stuffs a shoulder roast, one sniff of tantalizing fragrance from a delicious dish she has just prepared, to hear her just once describe her methods, will convince you.

FAMOUS LECTURER

Ruth Chambers

of the

National Live Stock and Meat Board

MEAL PLANNING

Each program will be built around actual meals, "from soup to nuts." Miss Chambers will even start before the soup, for she will have something to say about the appetite you bring to each meal. All the information she brings will be sound and practical.

MEAT COOKERY

Do you know there has been a great deal of experimental cookery in the past few years that takes the guess out of meat cooking? Miss Chambers is an expert meat cook. She not only tells you how to prepare meat appetizingly, but how to buy it wisely.

MURAT THEATRE

Michigan at New Jersey St.

TUESDAY, WEDNESDAY
THURSDAY Afternoons
and THURSDAY Night
November 21st, 22nd, & 23rd

Everything Is Free!

Cooperating Firms

This Cooking School is brought to the women of Indianapolis through the co-operation of the following firms:

PASTERIZED MILK DEALERS OF INDIANAPOLIS
Milk, Cream, Cottage Cheese

WM. H. BLOCK CO.
Chambers Fireless Gas Range

PEARSON PIANO CO.
Keltinators

MAROTT SHOE STORE
Shoes

FURNAS ICE CREAM CO.
Furnas Ice Cream

JESSUP AND ANTRIM
Velvet Ice Cream

BAKER BROTHERS
Furniture

KIEFER-STEWART CO.
Crosley Radios

BERTERMANN BROS. CO.
Flowers

MONUMENT BOTTLING CO.
Domestic Ginger Ale

BEAUTE ARTES
Permanent Waves

AMERICAN COFFEE CO.
Baker, Red Circle and Eight o'Clock Coffee

JAQUES MANUFACTURING
K C Baking Powder

PILLSBURY FLOUR MILLS
COMPANY

Pillsbury's Best Flour
Pillsbury's 8-oz. Shown Cake
Flour in the Handy Sifter
Package

LEVER BROTHERS
Rinso-Lux-Lux Flakes

LA CHOY FOOD PRODUCTS,
INC.

La Choy Food Products

MORTON SALT CO.
Morton's Salt

NATIONAL SUGAR REFINING CO.
Jack Frost Sugar

NATIONAL BISCUIT CO.
Uneeda Bakers, Crackers and Cookies

QUAKER OATS CO.
Quaker Oats

KELLOGG COMPANY
Kellogg's Cereals

B. T. RABBITT CO.
Bab-O

HAWAIIAN PINEAPPLE COMPANY
Dole's Pineapple Juice

PRICE FLAVORING EXTRACT CO.
Dr. Price's Extracts