

Auxiliary Is Sponsor for Aid Tourney

Legion Corps Series to Build Fund for New Clinic.

Mrs. Henning Johnson is the captain of the corps and general chairman of the ten weeks bridge tournament starting Monday night at the Antlers, held under the auspices of the Twelfth district American Legion Auxiliary Drum and Bugle Corps.

The affair is for the benefit of the new Christian hospital and clinic. Proceeds will be used to establish greater facilities at the hospital to take care of ex-service men and members of their families.

Competition in the tournament is open to the public and special invitations have been extended to the ex-service men's and women's organizations, civic, fraternal and social groups.

Features of the opening session include a demonstration of bridge playing by a selected team and music by twenty-five members of the drum and bugle corps under the direction of Mrs. McClary.

Officers of corps are Mrs. Johnson, captain and general chairman; Mrs. Roy Volstead, secretary; Mrs. Omer Hawkins, treasurer; Mrs. Christine McClary, drum major; Mrs. Dr. William Long, sergeant of drums; Mrs. Forrest Monroe, assistant sergeant of drums; Mrs. Ray Rairdon, director of publicity; Mrs. James Andrus, Mrs. William Schultz, Mrs. Eva Van Meter, and Miss Lillian Schweitzer, directors.

A. G. BEVERIDGE

TO WED IN EAST

The marriage of Miss Elizabeth L. Schaife to Albert J. Beveridge, son of Mrs. Albert J. Beveridge of Indianapolis, and Beverly Farms, Mass., and the late Senator Albert J. Beveridge, will take place June 21. The announcement was made by the bride-elect's parents, Mr. and Mrs. Roger L. Schaife of Milton, Mass.

Miss Abby Beveridge, sister of Mr. Beveridge, will be one of Miss Schaife's attendants. With her mother, Mrs. Beveridge, she is in the city for about a week before returning to Beverly Farms.

MRS. STEWART IS

CHOSEN CLUB HEAD

Mrs. George Stewart, first president and a founder of the Phi Delta Theta Mothers' Club of Butler university, was chosen president of the club at a luncheon meeting Wednesday at the chapter house. Other officers are: Mrs. A. S. Johnson, vice-president; Mrs. H. J. Raffenger, recording secretary; Mrs. L. M. Langston, corresponding secretary, and Mrs. A. E. Coddington, treasurer.

Patterns

Pattern Department, Indianapolis Times, Indianapolis, Ind. Enclose find 15 cents for which send Pat- 5221 tern No.

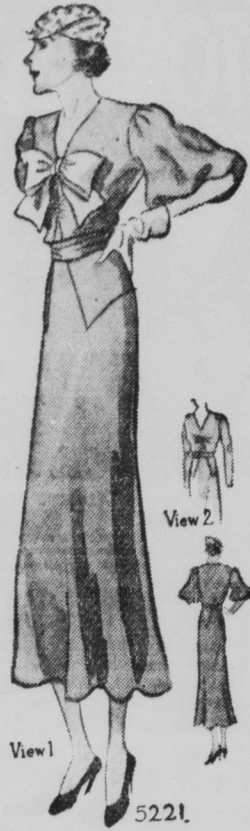
Size

Street

City

State

Name



DAYTIME FROCK

Bows tell a chic story this season—the bigger the bow the greater its chic. Sometimes they pep up a collarless neckline, as in the smart daytime frock for the matron, sketched here.

Sometimes they're debonairly posed on one shoulder, or formed from the ends of a wide crushed sash. It doesn't matter where they appear so long as they're ever present.

Not that the big organdie bow that adorns this Cannes gray crepe frock is its only smart detail. Notice the fullness of the sleeves at the armhole—that's a brand-new point this season. Also the bit of shirring just above the slenderizing pointed seaming that makes it so right for the larger figure.

It's an easy frock to make, too. For fabric requirements see pattern envelope.

Miss Kiger's Attendants Are Chosen

Wedding of City Girl to Be May 14 At Church.

Miss Mary Kathryn Kiger, daughter of Mr. and Mrs. Earl W. Kiger, 4414 North Meridian street, has announced the attendants for her wedding will be Misses Louise Niven and Miss Jane Brady.

The marriage of Miss Kiger to Stephen Hadley will take place at 4 Sunday afternoon, May 14, at the Broadway M. E. church.

Paul Whitehouse of Greencastle will act as best man and the ushers will be Messrs. William Kiger, brother of the bride-elect, George Horst, Norman Hanna and William Hoffman.

Miss Niven and Miss Brady, attendants, will entertain with a luncheon and kitchen shower in honor of Miss Kiger at the home of Miss Niven, 5158 Washington boulevard. The hostesses will be assisted by Mrs. Hugh Niven.

Covers will be laid for Mrs. Kiger, Mrs. L. J. Hadley, Mrs. George Patterson, and Misses Bertha Ginn, Bertha Jane Mueller, Neida Jean Roth, Betty Hughes, Marjorie Holcomb, Betty Remy, Josephine McElhane, Betty Leavitt of Sheridan, and Mary Margaret Hill.

Two Plays to Be Presented at Ladywood

Ladywood School dramatic club, DuJarie, will present two plays Tuesday and Wednesday at the school, under the direction of Mrs. George Foerderer, head of the dramatic department. Miss Catherine Cannon, harpist, will play during the productions.

The cast for "Mason 766" by Jennings, a two-act character comedy sketch, includes Misses Vivian Graham of Chicago; Marion Nolan of St. Paul, Minn.; Betty Breit of Tampa, Fla.; and Catherine Geoke of Lima, O. Following the first presentation, Misses Mondalyn and Josephine Meyers of Hagerstown will give musical readings.

The second production, "All's Well That Ends Well," a one-act comedy by Cameron, includes the following cast: Misses Lillian Michuda of Chicago; Clara T. Hillenbrand of Batesville, Ill.; Ellen Lee of Vernon, Dorothy McGuire of Omaha, Neb.; Doris Mowett of Detroit, and Mary Ellen Gartland of Indianapolis.

Fair to Be Held

Cabaret entertainment will be presented at the French Fair, to be held by the Alliance Francaise tonight in the Washington. Entertainers include Joan Elizabeth DuVall, Albert Hasenratz, Willie Faiste, Donald Carter, Misses Catherine Heard and Barbara Ballinger, Miss Betty Lutz is in charge.

ANNOUNCE WINNERS OF TABLE CONTEST

"Bon Voyage" was the theme of the prize-winning table in the contest held by L. A. Ayres this week. Set by Miss Gladys Cline and Mrs. John T. Day of the Hoosier Unit of the Women's Overseas Service League, it featured two ivory seals holding small glass aquariums on their noses.

Plated ivory Wedgwood on pale green damask service doilies set the color scheme of green and white. Color was added in the centerpiece of fresh fruits and ivy in a latticed basket. Thumb print crystal glasses, shell-shaped nut cups and the

MOTHER'S DAY

{...it's May 14th!}

Sale...!



3 splendid 8x10 Photographs OF YOU... one of them an exquisite SILK FINISH PHOTOGRAPH to make a perfect gift for Mother ALL FOR \$2

EVERY mother wants a fine photograph of her loved ones...and every photograph we take is a fine photograph.

NO APPOINTMENT NEEDED

Downstairs at Ayres

"Legacy" pattern in 1847 Roger's Brothers silver fit in the sea-going atmosphere.

The judges were Miss Anna Haselman of the John Herron Art

Institute, Miss Marie Stewart of the Indianapolis city schools and Miss Helen Cade of Butler university. The second prize will be announced at the end of the week after the vote

of the public has been taken. The tables are now on display in the auditorium, in charge of Mrs. J. E. Hale, representative of the International Silver Company.

Club To Dance

Young Mothers club will hold a dance Friday night at the community hall, Brookside park. The Indiana Nighthawks will play.



HERE'S HOW YOU DO IT!

"You can do a big wash for a family of 6 ...and still look fresh as a daisy"



SOAK your clothes in Rinso suds—instead of scrubbing them threadbare against a washboard. They'll come 4 or 5 shades whiter—they'll last 2 or 3 times longer! You'll save lots of money on clothes this gentle way—many women have saved \$100 and more! The home-making experts of 316 leading newspapers—the makers of 40

famous washers—recommend these extraordinary Rinso suds.

Cup for cup, Rinso gives twice as much suds as lightweight, puffed-up soaps. Rich, creamy suds, even in hardest water. Marvellous for dishes—grease goes in a flash. Millions use Rinso for the wash, for the dishes, for all cleaning. Get the BIG package.



THE BIGGEST-SELLING PACKAGE SOAP IN AMERICA

COTTON PRICES GOING UP!

Because of the rising cotton market, you may never be able to buy garments of this same quality at this low price.



We Solicit 10-Pay and Charge Customers Who Formerly Traded In Other Stores



FREE PARKING FOR "STAR STORE" PATRONS

FRIDAY SPECIALS

No Phone Or C. O. D. Orders on Specials, Please

Women's Broadcloth SLIPS 25c
Of fine quality, built up or bodice top. Flesh, Peach or White. Sizes 34 to 44. Ideal foundation for wash dresses. Star, 1st Floor.

Women's Pure Silk HOSIERY 25c
All newest shades. Reinforced to give better and longer wear. Sizes 8 1/2 to 10 1/2. Star, First Floor.

Children's Athletic UNION SUITS 10c
For girls and boys. 25c value. In sizes 2 to 6. Special. Star, First Floor.

532 Yards, Chambray Shirting Gingham 5c
Plain colors and fancy stripes. Special wide quantity lots. Yd. Star, Basement.

27-Inch White Outing Flannel 5c
Snow white bleached, 9c quality. Cut from full bolts. Limit 30 yds. Yd. Star, Basement.

Stevens' All-Linen Crash Toweling 8c
With wide colored border. 1 to 2 1/2 yds. lengths. 15c value. 16 and 18 inches wide. Yd. Star, Basement.

Complete 25-Foot GARDEN HOSE 79c
Complete with couplings, new stock. Non-kinkable. Special. Star, Basement.

Friday and Saturday! A DRESS SENSATION! Just Received! 3,600 Brand New Styles, Colorful Tub-Fast

WASH FROCKS

Outstanding Values! Outstanding Styles! Outstanding Selections! EVERY DRESS GUARANTEED TUB-FAST. A NEW ONE IF THEY FADE.

An event no woman can afford to miss. We selected 3,600 of the most brilliantly styled Spring wash dresses of the Spring season, and they are here at the "Star Store" ready for your selection. Styles for sports, for garden and afternoon wear, in VOILES, SHEERS, AND FINE COUNT PRINTS, the materials usually found only in higher priced dresses.

36 CHARMING STYLES

SEE WINDOW DISPLAY
CIRCULAR SKIRTS
STRAIGHT LINES
SLEEVELESS STYLES
SHORT SLEEVES
CAPE SLEEVES
ORGANDIE TRIMS
PIQUE TRIMS
CONTRASTING TRIMS
WIDE HEMS



49c

3 FOR \$1.40

EVERY SIZE

Plenty of large sizes as well as smart styles for the miss.

14 to 20
36 to 46
48 to 52

Styles Similar to Illustrations

OWNERSHIP MANAGED