

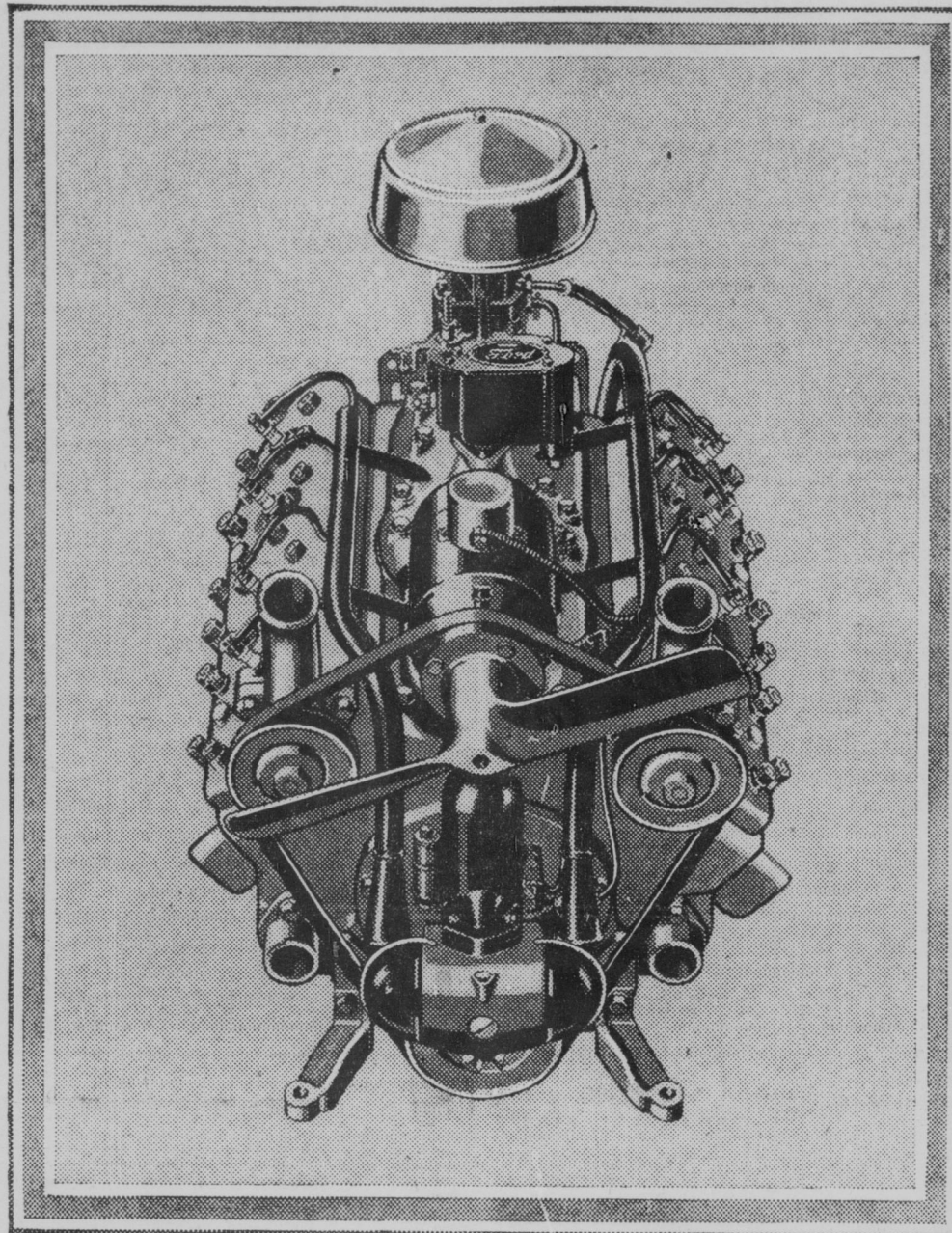
On Display Today

The New Ford V-8 Cylinder

THE INTRODUCTION of the New Ford Eight marks one of the most important events in the history of the automobile. To millions of motorists it brings a wholly new standard of value in a low-price car.

When you see the New Ford Eight and drive it, you will realize that it is the complete answer to your motoring needs. Here are beauty and safety and comfort. Here are exceptional speed and acceleration, the smooth-flowing power of an eight-cylinder engine, reliability and economy. Here are silent second speed and silent synchronized gear shifting. Here, in a word, is all you desire in a motor car at an unusually low price.

The beautiful New Ford V-8 is now on display in this city. There is also an improved Ford four-cylinder 50-horse-power engine operating with new smoothness. It is available in the same fourteen body types as the V-8.

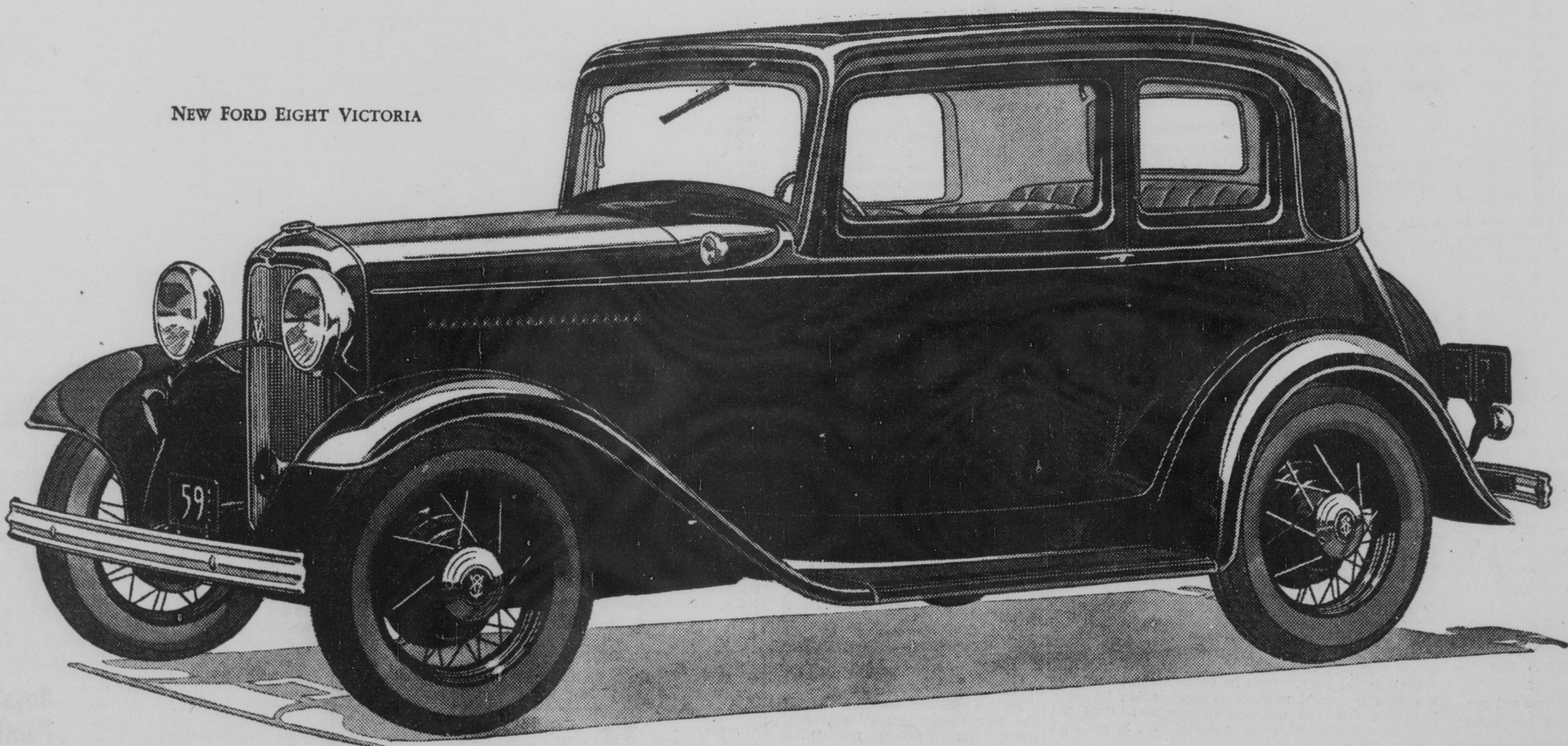


NEW FORD PRICES

FOURTEEN BODY TYPES	EIGHT Cylinder	FOUR Cylinder
Roadster	\$460	\$410
Phaeton	495	445
Tudor Sedan	500	450
Coupe	490	440
Sport Coupe	535	485
Fordor Sedan	590	540
De Luxe Roadster	500	450
De Luxe Phaeton	545	495
De Luxe Tudor Sedan	550	500
De Luxe Coupe	575	525
Cabriolet	610	560
De Luxe Fordor Sedan	645	595
Victoria	600	550
Convertible Sedan	650	600

(All prices F. O. B. Detroit, plus freight and delivery. Bumpers and spare tire extra. Economical terms through Authorized Ford Finance Plans of the Universal Credit Company.)

NEW FORD EIGHT VICTORIA



Eight-cylinder, 90-degree V-type, 65-horse-power Engine * Vibrationless * Roomy, Beautiful Bodies * Low Center of Gravity
 Silent Second Gear * Synchronized Silent Gear Shift * Seventy-five Miles per Hour * New Self-adjusting Houdaille
 Double-acting Hydraulic Shock Absorbers with Thermostatic Control * Comfortable Riding Springs * Rapid Acceleration
 Low Gasoline Consumption * Reliability * Automatic Spark Control * Down-draft Carburetor * Bore, 3 1/16 * Stroke, 3 3/4
 Piston Displacement, 221 Cubic Inches * 90-degree Counterbalanced Crankshaft