

# FIVE INJURED IN MARION COUNTY AUTO MISHAPS

## Woman Driver Crashes Into Tree in Effort to Avoid Two Racing Cars.

Auto mishaps on Indianapolis and county thoroughfares late Tuesday injured five persons. A sixth was struck by a street car.

Mrs. Clara Mischler, 27, of 2121 Station street, was cut on the face when her car skidded from the National road, west of the city, and crashed into a tree.

She was trying to avoid collision with two racing cars, officers were told.

Struck by a street car at Morris and Harding streets, Mrs. Mary Commiskey, 53, of 1043 Blaine avenue, suffered severe lacerations of the scalp and her left arm was hurt.

Herman Cain, of 1254 Sheffield avenue, motorist, said he was unable to stop the street car.

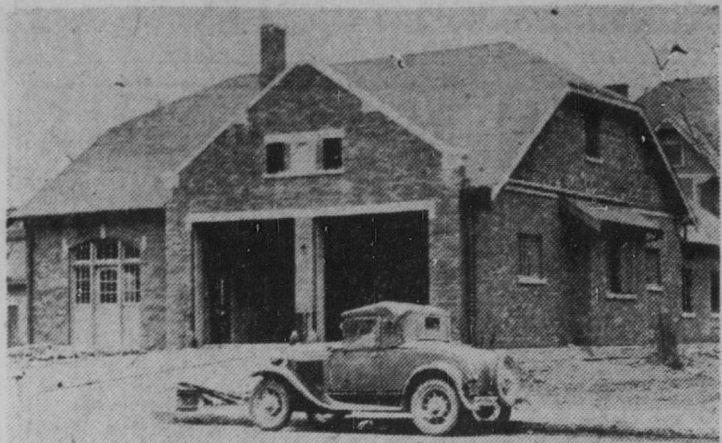
Three young women were cut and bruised when the automobile in which they were riding in the 2600 block, West Washington street, was struck by another operated by Sylvester Martin, Negro, 23, of 1018 North Traub avenue. Martin was arrested. Those injured were Mrs. Betty Staley, 23, of 1002 South Ingoman avenue; Miss Mary Shake, 22, R. 7, Box 63, and Miss Eva Dravis, 19, of 833 South Whitcomb street.

Minor injuries were sustained by Carl Klenk, 69, of 318 East Walnut street, when he was struck by an auto at Alabama and North streets.

### Poisoning Causes Death

MARTINSVILLE, Ind., Jan. 22.—Pitman poisoning caused the death of Mrs. Nancy Wagman, 23, wife of Samuel Wagman. Besides the husband, she leaves a son, Harold; her mother, Mrs. Alice Swisher, and a brother, Roy Swisher.

# New No. 8 Fire Station



The 700 block on Massachusetts avenue won't have its sleep disturbed by clanging fire wagons and sirens in a few weeks.

But the corner of Eleventh street and Broadway will be compelled to acclimate itself to those sounds.

For fire station No. 8, now at 748 Massachusetts avenue, will be moved into its new \$20,000 quarters at Eleventh and Broadway within the next few weeks.

The new station is shown in the above photo.

# MAP OPEN FORUMS ON TAX PROBLEMS

## Legislative Committee to Arrange Meetings at Statehouse.

Plans for a series of public meetings on taxation problems at the statehouse soon are to be outlined by members of the state legislative tax commission next week, Senator J. Clyde Hoffman, chairman, said today.

The commission will meet on Tuesday or Wednesday at the directors' room in L. S. Ayres & Co., to draft the big meeting plans, he said.

Hoffman and Senator Joe Rand Beckett, chairman and secretary, respectively, of a similar interim committee between the 1929 and 1931 legislative sessions, are bent on directing their work to governmental economy, rather than to a special legislative session to pass income or sales taxes, or otherwise to raise revenues to substitute for the present tax burden on real property.

### Bank Employees Arrested

By Times Special  
HAMMOND, Ind., Jan. 22.—James F. Knoche, 23, and Paul Mavity, 21, who were employed as bookkeepers in the closed American Trust and Savings bank, are under arrest charged with embezzling \$3,200 of its funds.

# THREE DEAD IN PLANE CRASHES

## Pilot Injured in Crackup on Elkhart Field.

By United Press  
Three were dead and one injured today in a series of widely scattered air disasters.

Carl W. Rousch, Chicago, air mail pilot for the Northwest Airways, on the Chicago-Madison run, crashed to his death in heavy fog near Genoa, Ill., a few minutes after he took off from Rockford, Ill., for Chicago with mail.

Robert K. Showers, 22, student flier, died when his airplane went into a spin at Champaign, Ill.

James Swyer, 48, head of the Swyer Aviation Service, died at Salt Lake City when he was struck by the propeller of an airplane he was attempting to start.

Joseph Toth, 20, chief pilot of the Aero Service, Inc., was injured near Elkhart, Ind., when his plane ran out of fuel and cracked up as it was about to land.

Otto Graf, missing New York business-man flier, was located safe at Dallas, Tex., where he flew Wednesday without stopping instead of landing at Big Spring as planned. No word had been received from him until today.

### Aged Doctor Dies

By Times Special  
PORTLAND, Ind., Jan. 22.—Dr. John W. Hall, 86, is dead of paralysis. He was a graduate of the Ohio Medical college, and of Bellevue Medical college, New York.

Fresh Country Eggs 15c

Spring Fries Lb. 20c

FREE DRESSING

Plenty of Parking Space

Wholesale Prices for Churches

Banquets. Free Delivery.

WEST STREET POULTRY CO.

11 N. West St. Lincoln 9669

FEATURED SATURDAY!

HENS 20c Lb.

Young Stags, 18c Lb.

FREE DRESSING

CITY POULTRY MARKET

125 NORTH ALABAMA STREET

Northwest cor. Ala. and Wabash

INDIA TEA

"There's more to it!"

India Tea is vastly different from teas you have used before. "There's more to it!" More fragrance! More fine, wine-like flavor! More of the strength that tea drinkers desire! India grows the world's finest tea. To get it, look for the Map (above) on packages of tea you buy!

POULTRY and EGGS

WHOLESALE AND RETAIL

We Dress Them FREE!

A good selection to pick from. Just received fine lot of capons direct from the producers.

FREE PARKING

M. E. Grant Co.

123-125 N. New Jersey St.

RI ley 5624

Carload Sale SATURDAY!

ORANGES

Tree-Ripened

\$1.50 Per Bu. Basket

TANGERINES

10c Doz.

In 5-Doz. Lots

Hamill Bros.

230 Virginia Ave.

Just South of B. & O. Elevation

CHICKENS

TO BOIL . . . Lb. 10c

Fryers, Leghorn . . . 16c

Hens, Leghorn . . . 20c

Ducks . . . 25c

Geese . . . 20c

Roasting Chix . . . 23c

Fryers . . . 23c

Hens . . . 23c

No. 1 Eggs, Select, Doz. . . 20c

FREE DRESSING

—Plenty of Parking Space—

H. Smith Poultry Co.

337 W. New York LI. 5952

STANDARD GROCERY STORES

OVER 250 STORES SERVING INDIANAPOLIS PEOPLE

AN INDIANAPOLIS INSTITUTION

Fine Granulated SUGAR

10 LBS. 45c

25 Pound SACK, \$1.19

Jackson's Finest Creamery BUTTER

1/4-Lb. Prints Lb. 23c

Gold Medal or Pillsbury's FLOUR

24-Lb. SACK 58c

P&G or Crystal White SOAP

10 BARS 29c

JELLO Assorted Flavors 3 Pkgs. 19c

Jackson Brand CATSUP 3 Large 14-Oz. Bottles 25c

Head Lettuce FIRM and CRISP 5c Each

Florida Oranges 2 Doz. 25c

Grapefruit Large 80 Size 3 for 10c

Spinach Young and Tender 2 Lbs. 15c

GRIMES GOLDEN APPLES

6 Lbs. 17c

Sweet Potatoes 5 Lbs. 15c

Cauliflower Large White Heads, Each 15c

TANGERINES

Medium Size 2 Doz. 15c

Standard Maid SLICED Whole Wheat Bread 5c

16-Oz. LOAF—20 Big Slices . . . . .

Baby Ruth Candy Bars 3c Each

BUTTER CRUST PIE COMPANY'S FRENCH BANANA CREAM or FRESH STRAWBERRY Pies 30c

Camp Fire Marshmallows 1-Lb. Pkg. 19c

Fresh Country EGGS

Every Egg Guaranteed Dozen— 15c

WILSON'S MILK

4 Tall Cans 25c

OLD RELIABLE COFFEE

NEW STYLE EASY GRIP TOP

Cup Tested 1-Lb. Can 28c

SUNSHINE BRAND FLOUR

FOR EVERY BAKING PURPOSE

24-Lb. SACK 38c

Palmolive SOAP

3 Bars 19c

FINEST QUALITY MEATS in 75 Modern Meat Departments of Standard Food Stores

FRESH PICNICS Lb. 7c

Pork Sausage Lb. 10c

Steak Round or Sirloin Lb. 23c

Bacon Canadian Style PIECE, Per Lb. 25c

CHUCK ROAST Lb. 14c

Veal Chops Lb. 18c

Veal Roast Lb. 15c

VEAL BREAST Lb. 10c

Sugar Creek CREAMERY BUTTER 32c

1-Lb. Carton . . . . .

Silverbrook Pasteurized BUTTER 24c Lb.

When you use Silverbrook, you use pasteurized Butter—Safe butter. Just as the milk you use has been pasteurized to assure safety, the rich cream from which Silverbrook Butter has been churned is first pasteurized. This is one reason why so many insist upon Silverbrook.

Strictly Fresh Every One Guaranteed Doz. 16c

Wisconsin Cream Lb. 17c

Sunsweet 2 Pkgs. 29c

2-lb. Package

Quaker Maid 3 Bottles 29c

14-oz. Bottle

3 Cakes 20c

Fine Granulated 25-lb. \$1.19

Cloth Bag

Extra Standards Bulk, qt. 39c

Iona Brand 24-lb. Bag 39c

Sunnyfield Brand 24-lb. Bag 59c

Milled From the Finest Wheat

48-lb. Bag, 77c

48-lb. Bag, \$1.17

MONEY SAVING VALUES!

Prunes Fancy Bulk Medium Size lb. 5c

Baking Powder Quaker Maid lb. can 17c

Baking Soda Crystal lb. pkg. 5c

Pork and Beans Quaker Maid 4 cans 25c

White House Milk 3 tall cans 20c

Hominy Van Camp's 2 lg. cans 15c

Pink Salmon, Alaska 2 tall cans 25c

Pineapple Del Monte No. 2 1/2 can 19c

Spinach Del Monte No. 2 1/2 can 18c

Ivory Soap Medium Size bar 7c

Grandmother's Quality Bread Fresh Daily 1 1/2-Lb. Loaf 7c

Pound Sliced Loaf, 5c

Fresh Fruits and Vegetables

ORANGES California, 176 Size, Doz., 29c

Large 200 and 216 Size Doz. 23c

Iceberg Lettuce head 10c

Texas Carrots 2 bun. 15c

Strawberries 2 pts. 29c

GRAPEFRUIT Florida—Full of Juice 4 for 17c

Cauliflower Head 15c

Bacon Sunnyfield 1/2-Lb. Cellophane Wrapped Pkg. 10c

Finest Quality Meats

SWISS STEAK Cut From Corn Fed Native Rounds Lb. 19c

Fresh Picnics lb. 8c

Fresh Cottage Butts lb. 10c

Halibut Steaks lb. 25c

In All Stores as Well as Markets

SMOKED PICNICS Shankless, Sugar Cured Lb. 10c

THE GREAT ATLANTIC & PACIFIC CO.