

RADIO BOARD SPLIT LOOMS ON POWER ZONING

Allocating Districts May
Result in Court
Protests.

By Scripps-Howard Newspaper Alliance
WASHINGTON, April 9.—The federal radio commission next week will begin final consideration of the most annoying problem it has faced since it was created.

The question involved is which of a large group of big radio stations shall be permitted to use fifty kilowatts of power.

Under a commission ruling these high-power stations are restricted to twenty-four in each of the five radio zones.

Twelve such channels have been allocated and eight are to be assigned. There are more than twenty applications for these vacancies and those which are refused super-

power are threatening to take their protest to the federal courts. The question eventually may reach the supreme court, which may rule on the constitutionality of the radio commission and its decisions. The commission has been divided over super-power broadcasting stations since its creation, and the industry has been equally divided. Hearings began last September on the applications of various aspirants for 50,000 watts of broadcast power. On Feb. 16, Chief Examiner Ellis A. Yost submitted a report in which he recommended that fifty kilowatts be authorized for stations WJZ, New York; WCAU, Philadelphia; WSB, Atlanta; WSM, Nashville; WGN, Chicago; WCCO, Minneapolis; KPO, San Francisco; and KOA, Denver. If these recommendations are approved the setup of super-power stations would be:

First Zone—WVIC, Hartford; WEAF, New York; WABC, New York and WJZ, New York.

Second Zone—WCAU, Philadelphia; WDKA, Pittsburgh; WLW, Cincinnati; and WTAM, Cleveland.

Third Zone—WBAP, Ft. Worth; and WFAP, Dallas (sharing time); WOAI, San Antonio; WSB, Atlanta; WSM, Nashville.

Fourth Zone—WENR and WLS, Chicago (sharing time); WGN, Chicago; KMOX, St. Louis; WCCO, Minneapolis.

Fifth Zone—KFI, Los Angeles; KNX, Hollywood; KPO, San Francisco; KOA, Denver.

WIFE SLAYER IS RULED INSANE

Herbert Kastor Is Sent to
Indiana State Prison.

Commitment of Herbert Kastor, 29, of 415 North Illinois street, charged with the murder of his wife, Helen, 22, to the insane department of the Indiana state prison, was announced today by Prosecutor Herbert E. Wilson.

Mental experts have found Kastor insane, Wilson said. A bullet which the prisoner sent into his brain after killing his wife in a downtown department store, November, 1929, is believed to have caused the mental condition.

Kastor, charged with first degree murder, has been undergoing treatment at the city hospital for several weeks.

Convict Divorced
WARSAW, Ind., April 9.—Mrs. Vera Kelly, North Webster, was granted a divorce here from J. M. Kelly, New York, who, she testified, is serving a sentence in the Indiana reformatory for forgery. He was convicted at Albion, Ind.

COPS SHOOT NEGRO GIRL

Flight Halted as Bullet Strikes Foot; Held for Vagrancy.

Fleeing from police, Mrs. Alice Walker, 22, Negro, 2714 North California street, was shot in the foot Wednesday night, near Missouri and Market streets. She is held on vagrancy charges.

The Greatest Radio Value

We Have Ever Offered

The New
Century
Triple Screen-Grid

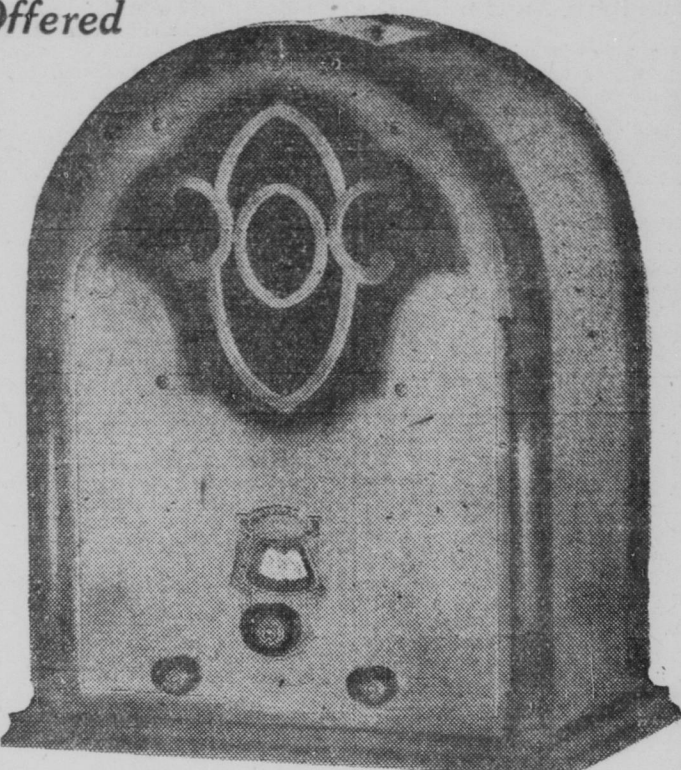
33.95

COMPLETE WITH
TUBES

The outstanding radio value. Triple Screen-Grid circuit. Magnavox 9-inch Dynamic Speaker, tone control, power detection, full tone, the lowest priced radio of standard manufacture in the city. Fully Guaranteed.

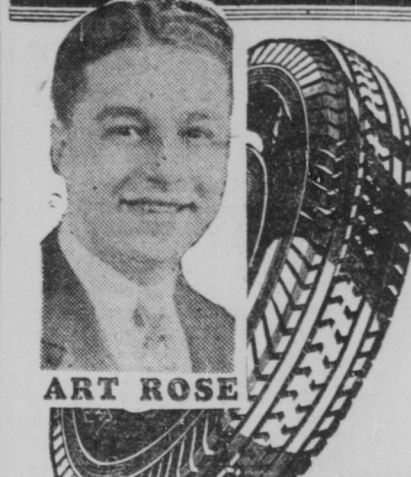
\$5.00 DOWN!
Balance Weekly

Hatfield Electric Co.
MERIDIAN AT MARYLAND ST. RILEY 5412



TUNE IN TONIGHT 6:35 P. M.—WBRE

WHY DELAY?



CHARGE
IT

Don't let lack of cash keep you from riding on America's Finest Tires. Open an account and pay the regular low cash price—nothing extra for liberal credit.

MILLER

GEARED-TO-THE-ROAD TIRES
Open Daily to 9:30 P. M.—Sundays 8 A. M. to 6 P. M.

Rose Tire Co.
365 S. MERIDIAN ST.

COMPLETE TIRE and BATTERY SERVICE

MENS and WOMENS CLOZ
LOW PRICES—EASY TERMS
RITES CLOZ SHOP 45 SOUTH ILLINOIS ST.

In the CATEGORY OF CLASS

IT'S been many seasons since fashions were so exciting! Gracious simplicity follows the new modes of the day. And here is a Store, ready as never before to serve you with the kind of Footwear that best complements the new frocks.

Specially
Priced at—

\$2.95

And

\$3.95

AAA to EEE

Why
Pay
More?

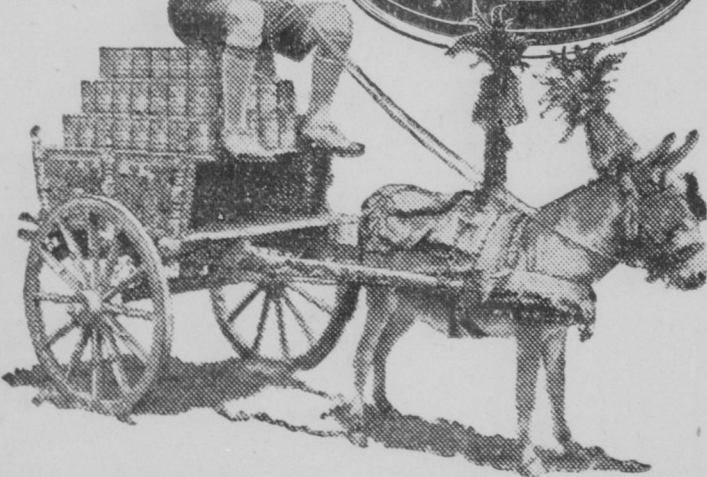
THRIFT SHOES

MERCHANTS BANK BLDG. (DOWNSTAIRS)
CORNER WASHINGTON AND MERIDIAN STS.

830 S. Meridian 1108 Shelby (Fl. Square)
2630 Northwestern Ave. 342 Virginia Ave.

THE BEST MONEY CAN BUY

Here
Tony Caboch, Anheuser-Busch's one-man radio show every Monday night over the Columbia Broadcasting System.



A comparison of Budweiser with all other brands of Malt Syrup will convince you that it is superior in flavor and quality. Over 70 years of unceasing effort and adherence to the long established policy that the best is none too good for the American public, assures Budweiser Malt to be "the best money can buy."

Budweiser Barley-Malt Syrup

LIGHT OR DARK—RICH IN BODY
—FLAVOR JUST RIGHT

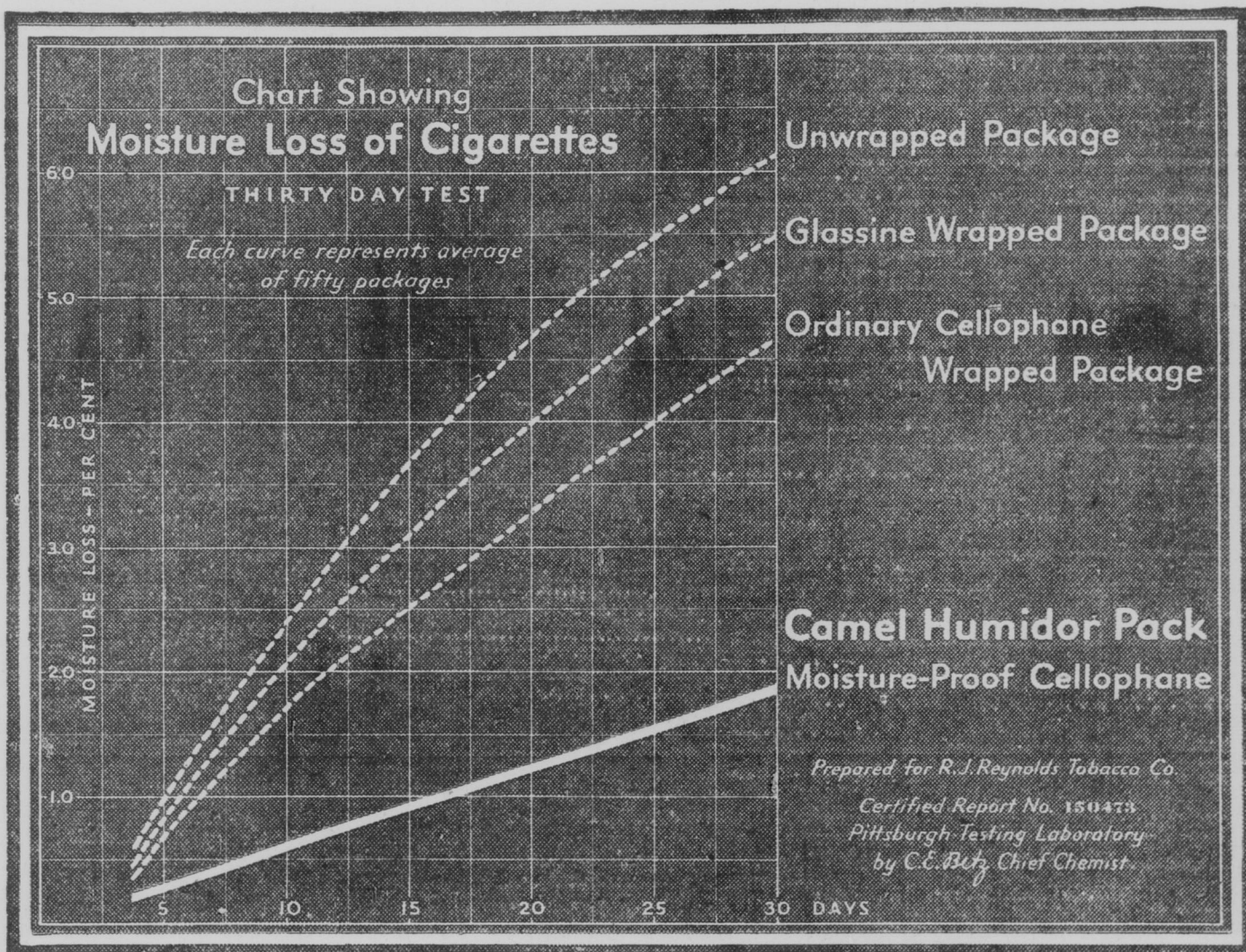
It pays to buy the best
Use quality products from

the House of
ANHEUSER-BUSCH
ST. LOUIS EM-155

Budweiser
The Nation's
Favorite
Beverage

BUSCH
EXTRA DRY
America's
Finest
Ginger Ale

Cigarettes in prime condition have a moisture content of about 10%. It will be seen by the chart that cigarettes in the ordinary wrapped package lose more than half of their total moisture in thirty days and that only the Camel Humidor Pack delivers cigarettes to you in prime condition.



THE whole country is talking about the throat-easy mildness and the factory freshness of Camel Cigarettes in the new Humidor Pack.

The above chart prepared by the Pittsburgh Testing Laboratory tells you why.

Please examine it carefully. It is an un-failing guide to cigarette selection and enjoyment.

As you can quickly see by the three upper curves on this interesting chart, cigarettes that lack the protection of the Humidor Pack lose their moisture rapidly from the day they are manufactured.

And day by day as this moisture disappears, the smoke from these cigarettes becomes harsher, hotter, more unkind to the smoker's throat.

Not so with Camels! Factory-fresh Camels are air-sealed in the new Sanitary Package which keeps the dust and germs out and keeps the flavor in.

Make these tests yourself
It is so easy to tell the difference between parched dry cigarettes and fresh prime Camels that it is no wonder everybody is reaching for a fresh cigarette today.

Your fingers identify stale, dried-out tobaccos at once. While a Camel is flexible and pliant.

Your ears can tell the difference too. For a dust-dry cigarette crackles under pressure.

But the real test is taste and there is simply no comparison between the rich mildness of a Camel and the hot, brackish smoke from a stale, dry cigarette.

Switch to Camels just for today then leave them tomorrow if you can.

R. J. REYNOLDS TOBACCO COMPANY
Winston-Salem, N. C.

CAMELS

Artificial heat in houses and apartments soon dries the moisture out of cigarettes wrapped the old fashioned way. It is the mark of a considerate hostess, by means of the Humidor Pack, to "Serve a fresh cigarette." Buy Camels by the carton—this cigarette will remain fresh in your home and office.

