

## CHARGE POSTAL SERVICE SLOW, DENY MEN JOBS

Economy Policy Is Held Cause of Poor Delivery; Bar Substitutes.

By Scripps-Howard Newspaper Alliance  
WASHINGTON, March 19.—Complaints of poor postal service in many large cities are commencing to pour into the office of Representative Clyde Kelley (Pa.), one of the most active members of the house postoffice committee.

Unless the complaints diminish in the next few months, Kelly indicated he would press for an investigation.

"The complaints, which came principally from large eastern cities, state that deliveries have been slowed up greatly by a new economy program placed in effect following special surveys by postal inspectors," Kelly said.

**Substitutes Are Idle**  
Apparently thousands of substitute carriers and clerks have been unable to obtain work for months. This is due to the fact that regular carriers made idle by decreased deliveries are being shifted about to fill vacancies caused by sickness, thus depriving substitute carriers of opportunities for work.

Postmaster-General Walter F. Brown told the house postoffice committee last month in response to a resolution by Representative John Boylan (N. Y.), that between Jan. 1, 1930, and Jan. 1, 1931, but 621 postal employees had been dropped from service.

**Investigation Asked**  
Representative Kelly declared today that Brown's information did not present a true picture of conditions, due largely to the fact that he did not take into consideration the number of substitute carriers who had been deprived of work during the year.

One complaint reaching Kelly from Brooklyn declared that not a single substitute carrier had been taken on from April to December, 1930.

"We believe conditions warrant a congressional investigation."

**DRIFTS 6,000 MILES**

Bottle Crossed Nearly All of Mid-Pacific in Wanderings.

By Science Service  
WASHINGTON, March 19.—Six thousand six hundred miles, almost all the way across the mid-Pacific, is the record of a drifting bottle recently picked up among the Marshall islands and reported to the United States hydrographic office here. The paper within the bottle stated that it had been set adrift on June 16, 1927, by Captain H. H. Ingersoll of the American steamer Solana, in latitude 11 degrees 59 minutes north, longitude 81 degrees 16 minutes west. This position is off the southern coast of Central America. When found, the bottle was just a little north of the equator and in longitude 173 degrees 29 minutes east.

**Woman Injured by Auto**  
Struck by an auto at Central avenue and Thirty-fourth street Wednesday, Miss Daisy Dabney, 26, Negro, 1009 South Capitol avenue, was injured slightly.

## Yes, it's Tough

By United Press  
WASHINGTON, March 19.—If the chairman of the committee that handles all revenue legislation errs in filling out his income tax return, what is to be expected of the man-in-the-street?  
Chairman Hawley of the house ways and means committee has been informed by the bureau of internal revenue that he made a mistake in his return. He wanted to pay too much.

## U. S. AGENTS PRESS WAR ON CHICAGO GANGS

Large Force of Federal Men Investigating Every Angle of Rackets.

By United Press  
WASHINGTON, March 19.—Attorney-General Mitchell said today the federal government campaign against Chicago gangsters is proceeding actively with a large force of treasury and justice department agents investigating every type of law violation.

"We are using all the agents who can be used to advantage in Chicago," the attorney-general said.

Mitchell said no additions have been made to the governmental investigating force in Chicago recently, but that the large force already there is continuing its work under the direction of a special representative of the department, who is co-operating with the district attorney.



## Girls Who Slump

Thousands of girls who drag themselves around certain days of every month in painful periods that need not be painful—that are not painful to those who know of Midol. These wonderful tablets make monthly periods an incident. No pain, not even discomfort when you have learned to depend on Midol; the woman who used to have the hardest time have found this to be true.

This marvelous product is the work of specialists. It is not a narcotic, but it stops the pain just the same in five to seven minutes. And if you take it in time, the pain never even starts. Every drug store has Midol in trim metal pocket case for fifty cents, so it is folly to suffer! Many have found Midol the quickest relief for headaches, neuralgia, neuralgia, and other pains.

# DOWNSTAIRS at AYRES

DEPENDABLE MERCHANDISE

AYRES SERVICE • LOW PRICES

Tomorrow We Introduce . . .

## A Brand New Line of Spring Dress Fashions

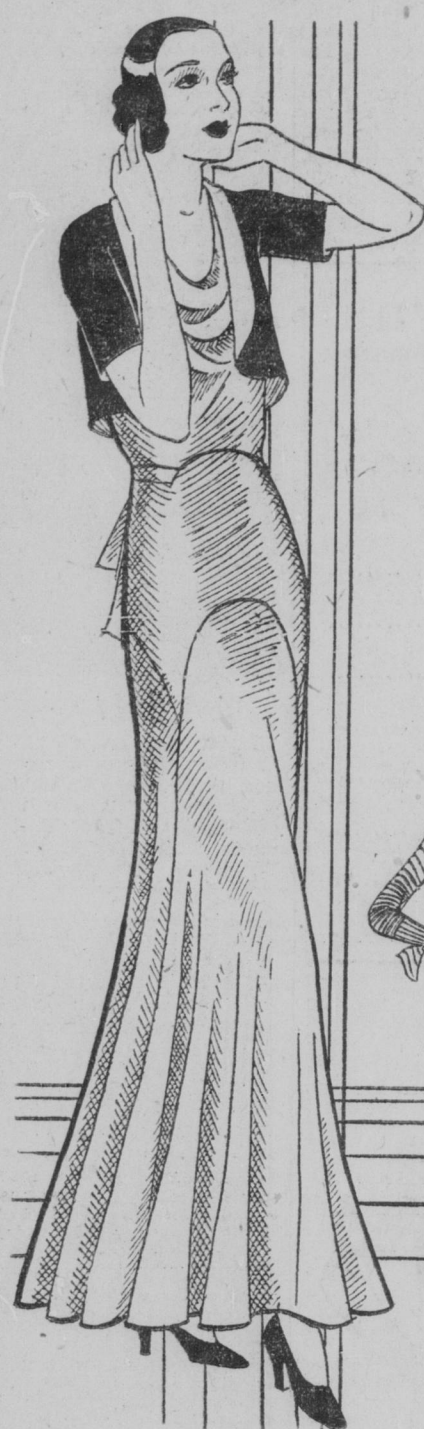
This Is Not a Sale . . . But an Entirely New Everyday Low Price That You Will Like!

**\$6.95**

This brand new "price line" makes Ayres' Downstairs Store dress department the most complete popular price dress store in the city. To the woman who does not wish to pay as much as \$10, or as little as \$5 . . . it offers an extraordinary opportunity to dress fashionably at just the price she DOES want to pay. These garments come from a well known maker, and are designed in some of the most charming fashions we've seen this spring. Jacket frocks, color contrasts, boleros, peplums, capes, two-piece frocks, etc. In sizes 16 up to 48.

Choice of These Smart Fabrics

- Canton Crepe
- Flat Crepe
- Dark Prints
- Light Prints
- Plaid Prints
- Dot Prints
- Algerian Stripes
- Wool Jersey
- Printed Georgette
- Plain Georgette
- All-Over Lace
- Lace Combinations



## Friday Bargains

**Women's Arch Support Shoes at \$3.45**  
Odds and ends of discontinued styles of "American Girl" shoes greatly reduced! Sizes 3 to 9 in the group.

**Child's Oxfords, \$1**  
Tan or black calfskin oxfords with chrome tanned leather soles. About half-price. Sizes 5½ to 8.

**Women's Fine Hose, 59c**  
First quality, full-fashioned Celanese hose; sizes 8½ to 10½.

**Women's Foundations, 59c, 79c, \$1.59**  
Discontinued and soiled numbers of brocade corsets and girdles; also all-elastic girdles; broken sizes.

**Women's Rayon Hose, 19c**  
First quality, heavy rayon hose; broken sizes.

**Women's Mesh Hose, 39c**  
Substandards of "Real Silk" pure silk mesh hose; sizes 8½ to 10.

## A Special Purchase of New SPRING HATS

Tomorrow you can buy these brand new hats at nearly HALF-PRICE, because we made a fortunate special purchase! Watteau brims, small brims, off-the-face hats, etc. In Baku braid, twisted straws, rough straws, or cellophane braids. Black and spring colors. Headsize 21 to 23½.

**\$1**

**Women's Silk Gloves, 50c**  
Pure silk gloves with smart novelty cuffs; broken sizes; irregulars.

**Women's Hose, 29c**  
Irregulars of pure silk hose; broken sizes.

**Sateen Bloomers, 25c**  
Girls' durable, fully reinforced sateen bloomers; black or white; sizes 4 to 14 years.

**Ladies' Bloomers, 50c**  
First quality, run-resistant rayon bloomers; serviceable, full cut; sizes 36 to 42.

**Women's Vests, 19c**  
Elastic cotton knitted vests; built up shoulders or bodice top; sizes 36 to 44; irregulars.

**Brassieres, 25c, 50c**  
Soiled brassieres of brocade or net; broken sizes.

**Infants' Bonnets, 59c**  
Dainty bonnets of organdy and crepe.

**Boys' Wash Suits, 59c**  
Attractive one-piece wash suits in prints or broadcloth; reduced because soiled.

**Infants' Shawls, 79c**  
Just 13 wool-and-rayon shawls reduced; soiled.

**Silk Remnants, 29c to 79c Yard**  
All silk crepes, cantons, crepe satins, printed and plain silk shantung, printed tub silks, etc.

**Printed Crepes, 89c Yard**  
All silk flat crepes from the bolt! Lovely printed patterns on light or dark grounds.

**Remnants, 10c Yd.**  
Percales, bleached muslin, marquisette, colored curtain serims, silk-and-cotton linings, voiles, suitings, cretonnes, etc.

**Novelty Curtains, \$1**  
Novelty criss-cross curtains of white marquisette with colored figures.

**45-In. Grenadine, 15c**  
White dotted grenadine in remnants up to 10 yards.

**Panel Curtains, 29c**  
Ecu color marquisette panels with fringed bottoms; 2 1-6 yards long.

**16 Boys' Suits at \$1.95**  
Serviceable suits complete with 2 knickers; gray or tan; sizes 7 to 16. Reduced!

**Men's Work Shirts, 14½ to 17.**  
Triple stitched blue chambray shirts; full cut; sizes 14½ to 17.

**Men's Union Suits, 50c**  
Light weight, knitted suits short sleeves; sizes 36 to 46.

**Men's Socks, 3 Pcs. 50c**  
Fancy rayon socks in neat patterns and colors. Substandards; sizes 10 to 12.

**Kerchiefs, 50c Doz.**  
Full size, white cotton handkerchiefs for men.

**Athletic Shirts, 25c**  
Men's fine knit cotton athletic shirts; form fitting; sizes 34 to 44.

## PETTIS DRY GOODS CO.

The New York Store

Est. 1853

## RADIO-SPECIAL

Friday Only!

**Men's Blue Chambray WORK SHIRTS**

**2 for 88c**

Full cut, triple stitched work shirts. Collar attached style. Sizes 14 to 17.

DOWNSTAIRS STORE



**"I AM SO HAPPY—my SKIN is now clear"**

S.S.S. is famed for its ability to build new strength in the blood—the kind that HEALS so-called skin troubles. Every spring countless thousands take this purely vegetable tonic so that they may have a clear skin and greater resistance against infection and disease. You, too, will want to take S.S.S. for this very reason. Select the larger size as it holds double the quantity and represents a price saving.

Every Spring take S.S.S. Tonic

## Friday—A Gigantic Sale of 1,400 New Handbags

Over Half Have "Talon" Automatic Fasteners—Choice of Over 50 Smart Styles in Wanted Spring Colors!

Your Choice at Only—

**\$1.00 Each**

BAGS SHOWN WERE PHOTOGRAPHED FROM STOCK

We made a gigantic special purchase . . . and YOU are the gainer! Never have we offered such good-looking bags for so little money . . . all copies of very expensive bags . . . smartly styled, smartly trimmed, smartly fitted. There are beautiful MOIRES for dressy costumes, rich-looking KARATOLS\*, imitation Italian embossed bags, patent leather and tapestry bags. Come in tomorrow! Choose a bag to match your ensemble.

\* Simulated Leather —Downstairs at Ayres.



—POUCHES  
—ENVELOPES  
—TAILORED STYLES  
—MONOGRAM EFFECTS  
—FANCY CLASPS  
—TALON FASTENERS

—BLACK  
—RED  
—NAVY  
—BEIGE  
—BROWN  
—GREEN