

REVIVAL SEEN IN NEW YEAR BY AUTO TRADE

Signs Point to Improved
Business; Many Changes
in Twelvemonth.

BY ISRAEL KLEIN,
Science Editor, NEA Service

Both discouraging and promising were the developments in the automotive industry during 1930. Here's what happened:

1. Production dropped from a peak of 5,600,000 cars in 1929 to 3,000,000 in 1930. Car sales dropped, although not as much, and exports took a big slump.
2. Four names are definitely gone from the automobile lineup—Erskine, Marquette, Whippet and Viking.
3. Two sixes have been abandoned, so has one eight.
4. One four has been converted to a six, and three sixes to eights.

New Models Shown

5. A twelve and two sixteens have been introduced, while another new six, the De Vaux, has been announced for introduction the first of the year.
6. One new six and two new eights have been added to already established lines.
7. Prices have continued downward, despite many engine and body improvements.
8. One small European type automobile has come into the American field, another is now being built and a third is to be introduced at the New York auto show this week.
9. General Motors, with the new Buick, has entered the straight-eight field.
10. Free-wheeling, introduced by Studebaker, has been adopted by Lincoln, and will be seen in at least two other popular automobiles early in 1931.
11. Other quieter and easier operating transmission systems, like constant mesh, synchro-mesh and herringbone, have come into wider use.
12. While exports have dropped considerably, at least two of the larger American car manufacturers definitely have entered European trade with the manufacture of their products abroad.

Prospects Are Good

Such generally is the picture of the automotive industry as we find it today. While it seems quite a pleasing layout to the motorist, it has been rather disappointing to the manufacturer and dealer.

Prospects, however, are that the industry will pick up gradually and, by 1932, will be once more on a firm foundation.

Signs of this already have begun. For example, in recent months production has been held so low that sales of new cars have exceeded it.

For the entire year, a greater proportion of new cars was sold than in any other previous year since 1925, when registration figures became available.

Gain Late in Year Seen

There is hope of a growing replacement market beginning with 1931, due to the old cars that motorists have kept a year longer than they would ordinarily. But this may not begin to bring results until the end of the year.

Until then, replacements may mean merely exchange of an old car for a slightly newer, but used automobile.

Revival of the industry will be slow, too, because of the slump in exports, due to some extent by high European tariff rates.

WOMAN ROUTS BOYS DRAINING GAS TANK

Thieves Return After Fleeing, Ask
Permission to Finish Job.

Surprised by Mrs. Henry H. Mann, 2222 Parkview place, as they were stealing gasoline from her car, two youths fled Tuesday night, after trying to talk Mrs. Mann into letting them to finish the job. She told police she found them at work when she went to her car, parked near 3504 Fall boulevard.

They ran away and then came back, she said. "One of them got in an old car they had and then both tried to talk me into letting them get the remainder of the gas. When I told them the police were on the way, they ran." She then plates on the boys' car and issued to Eli Coleman, 1401 E. street, and the title to the car, 701½ East Eleventh.

Thieves Get \$50 Jewelry Loot
Thieves who smashed a display window of the Hutto Jewelry Company in the State Life building early last week obtained loot valued at \$50. Hutto, proprietor, said stolen items included a watch, cigarette and bracelet.

THREE GIVEN CITY POSTS BY SULLIVAN



Dr. Carleton B. McCulloch



George T. Whelden

Whelden, McCulloch and Swaim Named to Major Municipal Jobs.

Three major appointments to city boards were announced formally today by Mayor Reginald H. Sullivan. George T. Whelden, local realtor for eighteen years and prominent figure in business and real estate activities, was named today as a member of the city plan commission and member of the zoning appeals board. His term, which starts Thursday, is for four years. He succeeds Dr. Fred W. Mayer.

Whelden was the first secretary of the Indianapolis Real Estate Board and now is a director of the Indianapolis Chamber of Commerce. He is a Republican.

Dr. Carleton B. McCulloch today was named successor of Adolph G. Emhardt, park board president, whose term expires today. Dr. McCulloch was Democratic candidate for Governor in 1924 and has been active in politics for several years. He served overseas, enlisting with the A. E. F. a month after the United States entered the war.

Reorganization of the board will take place, probably at a meeting within the next week. Jackiel W. Joseph, the other Democratic member, is expected to be named president. Emhardt's retirement marks the termination of five years of service in the department.

H. Nathan Swaim, attorney and Democratic county chairman, has been named to succeed Russell J. Ryan, superior judge-elect, as board attorney. Swaim's appointment has been expected several weeks.

Further reorganization of the plan commission will result from the appointment of a park board mem-

CARAWAY WILL MOVE TO FORCE EXTRA SESSION

Sharp Attack Is Made on
Administration's Record
on Prohibition.

By United Press

WASHINGTON, Dec. 31.—A sharp attack upon the administration's record in prohibition enforcement and the tactics of President Hoover's law enforcement commission has been made by Senator T. H. Caraway.

At the same time the Arkansas Democrat, noted for his biting utterances, joined the growing group which wants to force an extra session of congress.

Caraway, who for the most part has been in the background since the lobby investigating committee flare-ups of the preceding session, Tuesday night directed a savage blast against the commission and against both Republicans and members of his own party who oppose an extraordinary session of congress after March 4 next.

Wants Extra Session

In response to a question, Caraway said in an interview he would not hesitate to accept the responsibility of forcing an extra session if that were possible. He offered to join any group in the senate to that end.

The extra session bloc is expanding. Senator Borah (Rep., Ind.) is an active member.

Senator Norris (Rep., Neb.), Senator Brookhart (Rep., Ia.), Senator La Follette (Rep., Wis.) and some others on that side of the chamber are counted as potential members.

Caraway said he thought he would have support of such Democratic Senators as Walsh (Mont.), Wagner (N. Y.), Wheeler (Mont.) and perhaps Dill (Wash.).

Good California President

Debate on any document received from the Wickersham commission would add to the possibility of delay in voting routine funds and the necessity for summoning congress after March 4.

"I may be doing the commission a grave injustice, but if newspaper reports are to be relied upon, it is largely a debating society," said Caraway.

H. Nathan Swaim

ber to succeed Emhardt and Bruce Short, county surveyor-elect, will succeed Paul R. Brown, retiring from the post.

Whelden has held offices in the Indianapolis Real Estate Board and has been a director of the Chamber of Commerce. He was active in the city manager movement here a few years ago.

Only 3 Motorists Punished

DETROIT, Dec. 31.—Only three motorists were punished for the 366 persons killed in traffic accidents in Detroit during the year.

Colds

Colds are often serious.
Never neglect a cold.
Take the recognized
standard remedy.

**Grove's Laxative
BROMO
QUININE
Tablets**

**RITE'S
GUARANTEED
WATCH
REPAIRING**
AT
Rock Bottom Prices
Round Crystals 19c
Fancy Shape Crystals..... 49c
Unbreakable Crystals..... 49c
Any Mainpring 99c
Watch Cleaning \$1.09
Jewel Replating \$1.19
"A Child Can Buy as Safely
as a Grownup" at
RITE'S
43 SOUTH WALKER ST.
Square Deal Jewelry Shop
Rite Gladly Opens Charge Ac-
counts on Diamonds, Watches
and Jewelry.

A
New Year
A New Era

Now, at the beginning of this New Year, comes a New Era... an Era in which you will see the greatest values in years, an Era that will appeal to the thrifty.

For thirty-six years Morrison's has enjoyed the confidence of the public, a confidence won through satisfying service and supreme values. Our entire efforts during the coming year will be directed to maintain and increase this confidence with values that will make the year a happy and prosperous one through the savings effected.

MORRISON'S
FOUNDED 1894
26-28 West Wash. St.

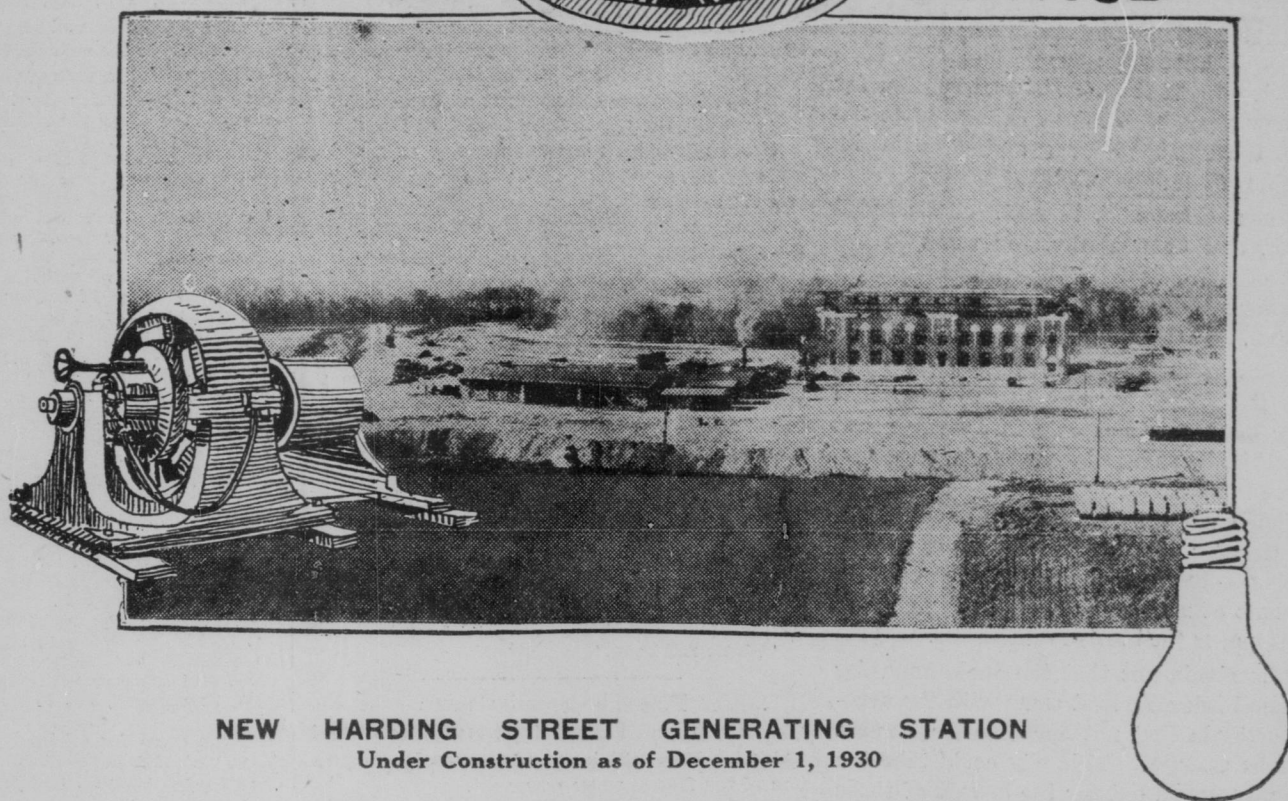


Wishing You a Happy New Year

Flowers
Telegraphed

Bertermann's
Riley 7535

"EDISON SERVICE"



NEW HARDING STREET GENERATING STATION
Under Construction as of December 1, 1930

That We May Be Ready!

To Make Indianapolis more attractive to new industries
by having an ample and reliable electric power
supply—

To Assist in the expansion of present local industries
by constantly improving an already highly effi-
cient and economical service in the generation
and distribution of electric power—

To Meet the power requirements of the constantly grow-
ing use of modern appliances by all classes of
consumers—

To Meet the general power requirements of a modern
civic community which is so located and has
such advantages that its constant growth is
assured—

The Indianapolis Power & Light Company has had an
average of more than 300 men at work daily
throughout 1930 to construct the new 100,000
horse power Harding Street Generating station
and the new 132,000 volt transmission line
around the city, in addition to the employment
of more than 1,200 men and women, who have
also worked daily during 1930 in the normal
operation of our business.

This, together with nearly \$1,000,000.00 for local taxes and
approximately \$3,000,000.00 for the local purchase
of supplies and equipment, has been, in part, our
contribution to the stabilization and improvement
of our community during 1930.

INDIANAPOLIS POWER & LIGHT COMPANY

48 Monument Circle

The Best New Year You
Ever Had Is Our Wish

Riley
9381



Riley
9381

RENT
TOWELS
AND LINENS