

CHARITY DRIVES NET MILLIONS IN 360 CITIES

Community Fund Campaign
More Successful Than
for Many Years.

BY PAUL HARRISON,
NEW YORK, Dec. 5.—Hard times
have brought boom times to the
federated charity business, and it
is because depression has been so
unusually severe that the Commu-
nity Chest drives in hundreds of
American cities are enjoying unpre-
cedented success.

With a spirit comparable to
nothing since the war chest days
of 1917, people have been giving
of their substance as well as their
surplus, giving until they gave up
cherished plans for new cars and
radios and fur coats.

Most of the 360 Community
Chest drives, in as many cities,
have been closed now, and 110
final reports have been filed with
the Association of Community
Chests and Councils, in New York.

Total to Pass \$0 Millions

These, coupled with incomplete
returns, show that the largest
amounts ever raised by centralized
campaigns—expected to total well
over \$80,000,000—will be available
in 1931 for the alleviation of human
suffering.

This means a full 10 per cent
increase over the 1930 funds on
which relief, welfare and social
agencies associated with the various
Community Chests now are func-
tioning.

The goals set by 110 cities which
have completed their drives totaled
\$37,804,957. The amounts subscribed
amounted to \$38,120,706. The same
Chests last year contained \$34,661-
604.

Two hundred and fifty other Commu-
nity Chests which had not sent in
final reports are expected to
maintain the ratio of these statis-
tics.

Cleveland Passes Quota

Some cities stage their campaigns
in the spring, and among them are
Rochester, N. Y., San Francisco and
Cincinnati. The latter two, accord-
ing to Burns, will raise about
\$2,500,000 each.

Cleveland, where the Community
Chest idea originated, has broken
all records for giving. Ten out of
every twenty-five persons in the
city made contributions last month,
and the initial goal of \$4,650,000 was
exceeded by \$17,000.

Atlanta, Baltimore, Columbus, O.,
and a number of other cities, which
in previous years have fallen short
in Community Chest drives, have
seen their goals topped this season
by several thousands.

Panics Fail to Stop Drive

Financial panics and near-panics
in southern cities have failed to in-
terrupt the golden streams for char-
ity. During one day last month
thirty-five banks closed in Arkansas.
Yet Little Rock, where the largest
of these banks was located, exceeded
its Chest quota.

The largest oversubscription so
far this season was made by Min-
neapolis. With an announced goal
of \$1,431,000, workers there raised
\$1,551,000.

Some of the other cities register-
ing large gains are Bridgeport,
Conn., Omaha, Oklahoma City,
Rockford, Ill.; Worcester, Mass.;
Albany, N. Y.; Indianapolis, Kansas
City, Mo.; Milwaukee, Montreal,
Racine, Wis.; Seattle, Shreveport,
La.; Springfield, Ill.; Springfield,
Mass.; Houston, Tex., and Dayton.

MRS. BEDFORD-JONES FILES NEW COMPLAINT

Second Paragraph Added to Suit
Asking Divorce Be Set Aside.

By United Press
EVANSVILLE, Ind., Dec. 5.—A
second paragraph was added to the
complaint in Evansville superior
court Thursday in the suit of Mrs.
Helen Bedford-Jones to set aside the
divorce granted Henry Bedford-
Jones, author.

The second paragraph charged
that Bedford-Jones had entered into
a conspiracy to divorce Helen Bed-
ford-Jones and marry Mrs. Mary
Bernardin, wealthy Evansville
widow.

The first complaint to have the
divorce set aside was filed at Evans-
ville, July 2. Argument on the suit
was postponed in superior court to-
day until Dec. 10, upon request of
attorneys for the first Mrs. Bed-
ford-Jones.

The former wife also has a suit
now pending in a Chicago court
seeking \$300,000 damages from Bed-
ford-Jones' present wife on a charge
of alienation of affections.

CONSIDER OKLAHOMA FOR WESTERN PRISON

New \$3,000,000 U. S. Penitentiary
May Be Built at El Reno.

By United Press
WASHINGTON, Dec. 5.—El Reno
(Okla.) is being considered as the
site of a new \$3,000,000 federal peni-
tentiary for the western United
States, Superintendent Sanford
Bates said today.

The site is the only one being con-
sidered. It consists of about 1,000
acres of government property. Build-
ing of a federal penitentiary in the
west was proposed to congress last
year.

No funds have been appropriated
yet for the western penitentiary.

Slain in Home



The love of Miss Marie Tarlo,
(above) for an Italian nobleman
whom she met on a recent world
tour, brought triple tragedy to
her home in Philadelphia. She
was shot and killed by her father,
Albert Tarlo, wealthy manufac-
turer, who then turned the
weapon on his wife and himself.
Both father and mother were
reported to have been determined
to prevent a marriage between
the Italian and their 22-year-old
daughter, a radio singer.

BUYS 31 SNOW PLOWS

State Spends \$15,470 Preparing to
Keep Highways Cleared.

Purchase of \$15,470 worth of
snow plows to be used by highway
department on highways in north-
ern Indiana this winter was an-
nounced today by John J. Brown,
state highway director.

Twenty Wauss-type plows were
purchased from the Auto Equipment
Company of Indianapolis at from
\$355 to \$622 each, and eleven plows
were purchased from the Ross Blade
Plow Company at from \$308 to \$472
each.



\$6.95
DRESSES

Dresses that sell from \$8 to
\$10 everywhere in town—
the entire third floor devoted
to these smart dresses—all
at one price. You will never
know how much dress value
you can buy at \$6.95 until
you visit this floor. Always
the newest and smartest
styles in the most attractive
silks, crepes and chiffons—
all sizes.

MORRISONS
FOUNDED 1894
26-28 W. Washington St.

RAILROAD FAILS; HIKERS BLAMED

Walking Craze Ruins Trade
of Mountain Line.

By United Press
SAN FRANCISCO, Dec. 5.—
Walking a railroad out of business

may sound like an impossibility, but
San Francisco hikers have done just
that.

For years a line known as the
crooked railroad in the world
wound its way from Mill valley up
the slope to the summit of Mt.
Tamalpais, one of the scenic spots
of Marin county, across the bay from
San Francisco.

Then a few hikers appeared and
soon a climb to the summit became
more popular than the train ride.
Trails were built, hiking clubs were
organized and finally this year the

Tamalpais & Muir Railroad ceased
operations.

An automobile road aided the
hikers, of course, in making the
operation of a railroad unprofitable.
There are four trails to the peak
of Tamalpais and every Sunday
hundreds of hikers are trudging over
them while the auto road, at which
tolls are collected, does not do a
rushing business.

It is approximately twenty miles
from the bay to the top of the
mountain. Hikers from San Fran-
cisco take an electric train to Mill
Valley and then hike the ten miles,

if the short route is selected, up the
2,801 feet.

PERFECT VACUUM TUBE

By NEA Service
SCHENECTADY, N. Y., Dec. 5.—
A vacuum tube so sensitive that it
can measure heat radiated from
stars millions of miles away has
been perfected in the laboratories
of General Electric Company here.
It is so sensitive that it can mea-
sure a hundredth of a millionth of a
billionth of a degree.

DO YOUR CHRISTMAS SHOPPING NOW
OPEN A CHARGE ACCOUNT
Take a Whole Year to Pay!

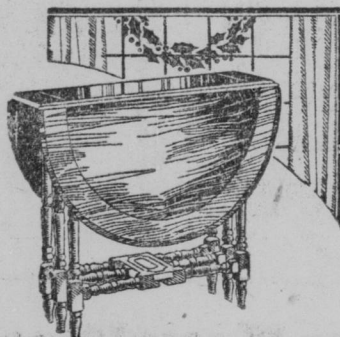
Prices are lower than they have been for years—see our windows.

Crown Jewelry Co.
21 SOUTH ILLINOIS STREET
OPEN EVERY EVENING UNTIL 9 O'CLOCK

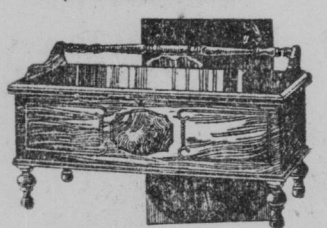
Will your HOME

be "FURNITURE Styled" This CHRISTMAS

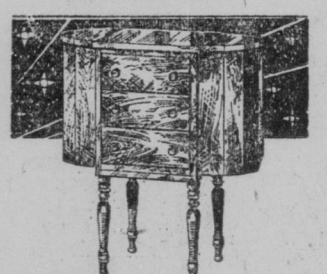
THE gay, gladsome spirit of the
holidays should be reflected in
the furnishings that surround you.
YOUR home should be the up-to-
date haven of happiness, for all the
family.
If it is, best wishes and congratula-
tions. If not, make this the Christ-
mas of a lifetime. Give to every
member of your household the year
round pleasure of a well furnished
home. It is easier than you think,
particularly now, with prices at the
lowest level, and terms may be ar-
ranged to suit your convenience.



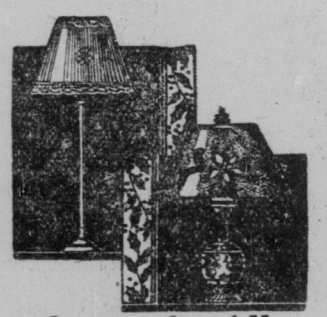
Gateleg Table
Exquisitely fin-
ished, full size,
drop sides.
Ideal for dining
... card playing
... and of de-
corative charm.
19.75
\$1.00 Delivers It



Utility-Value
Walnut treasure
chest, full 48-
inch size, with
cedar interior
design, win-
dow seat style.
26.95
Open an Account



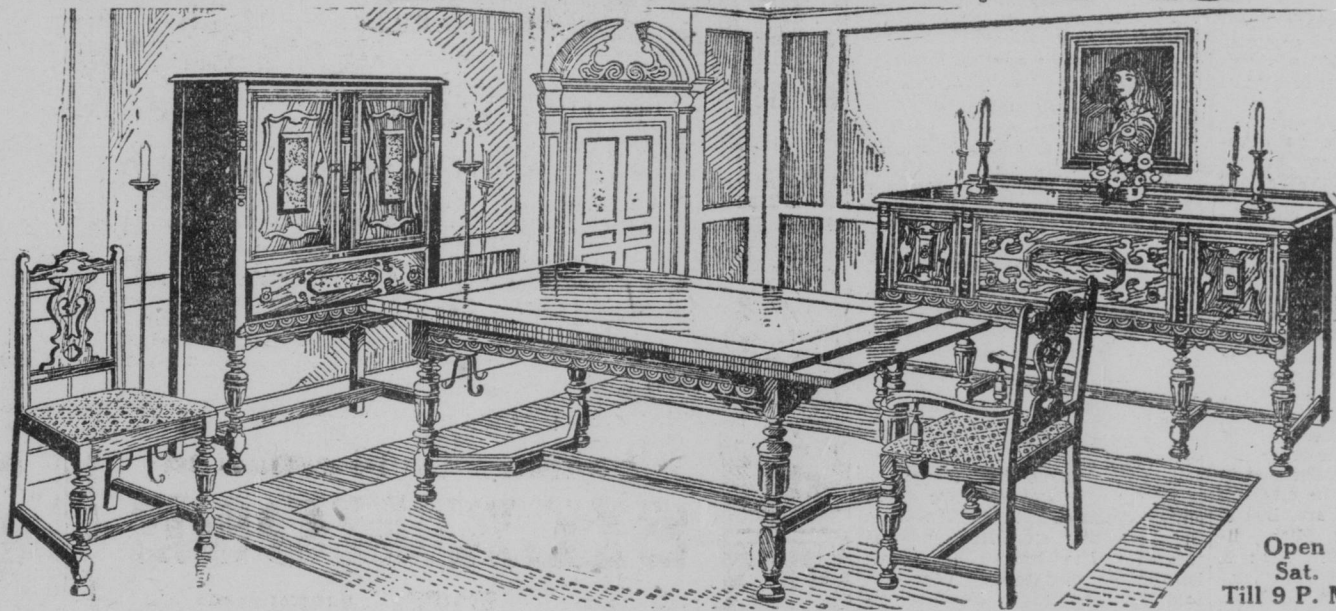
Unusual Charm
Because of its rugged
simplicity, this early
Colonial Martha
Washington cabinet
will lend unusual
charm.
7.75
Terms to Suit



Lamps for All
Every home can use a lamp
give them generously as worthwhile
gifts... hundreds to choose from
... prices start at—
Table Lamps, 4.95
Junior Lamps, 7.95



For Mr. Husband
Men of all types... tall... short
... medium... will
be immensely pleased
when they see this
humorous smoker
... copper lined
... copper fit
... flange
7.95
Only \$1 Down
Open
Sat. Until 9 P. M.



Early American Colonial Ensemble in Solid Oak

In glorious oak, the wood of mellow beauty and irresistible loveliness,
make your dining room reflect the spirit of hospitality. The elab-
orately carved buffet, the refectory table, the host chair and five
diners are priced complete for only

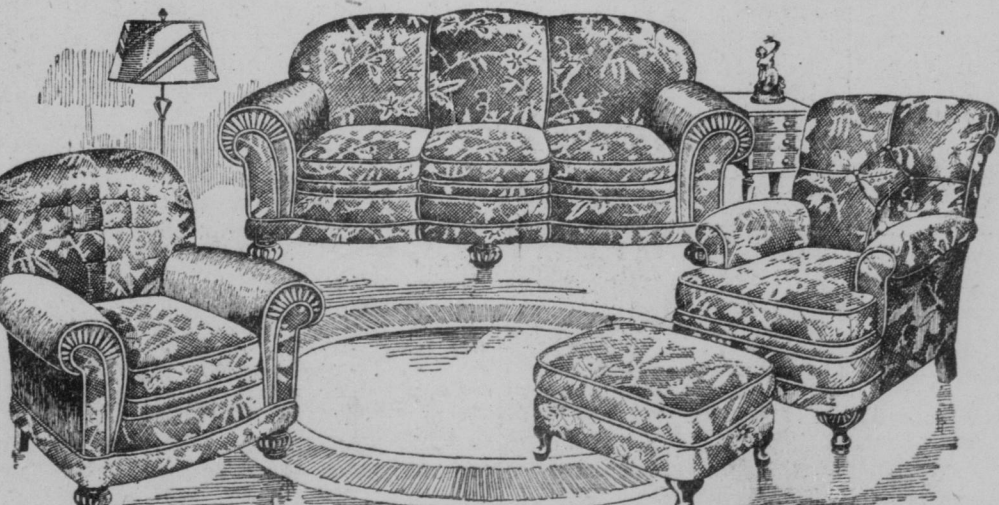
139.00

Free Delivery in Indiana

TOY FAIR

Use Our Budget Plan
Very Easy Terms

Scooters	Blackboards	Velocipedes
Ball bearing... disc wheels... full size... 3.50	Easy models... prices start at... 1.49	Spring seat, red, green, black... from... 3.75
Pedal Bikes	Desk Sets	Doll Carts
Three-wheel... all steel... for... 2-year-olds... 1.19	Just like dad's... roll tops... slide drawers... 7.95	All new styles at prices as low as... 1.98



There's Cozy Magic In This Massive Suite

Every place sketched in the above illustration is fascinating, liveable,
attractive and extremely cozy. Inches and inches larger in propor-
tion than regular size suites, added inches provide added comfort.
Full web construction, covered all over. Massive davenport, choice of
either chair and spring ottoman, for

135.00

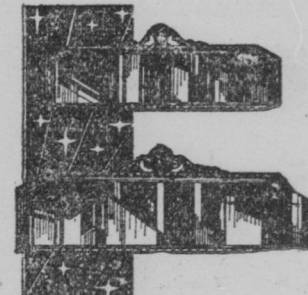
Trade In Your Old Furniture

The KIRK Stores

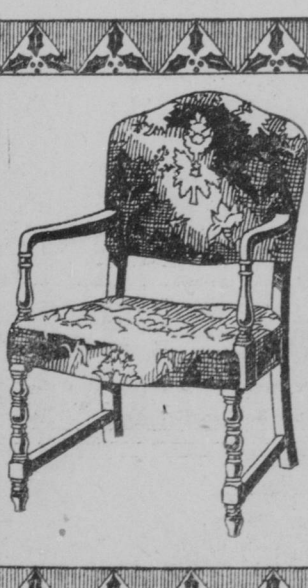
THE STORES WITH THE HOME AT HEART

22-24—East Washington Street—311-313

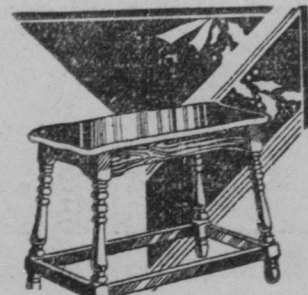
2 Downtown Stores and 1 in Greenfield, Ind.



Classic Mirrors
These distinguished
buffet mirrors in
sparkling semi-ven-
etian style... make
perfect gifts.
7.75
Large Variety



Occasional
In homes alertly
fashionable...
occasional chairs
are everywhere,
model shown, in
Jacquard only.
11.75
Open an Account



Coffee Stand
Walnut... rich tone
effect... in all its
durable beauty...
in the form of a con-
venient coffee table.
At All Stores
5.69
Open
Sat. Until 9 P. M.



COUGH "MELTED AWAY"

"Jackie was out in real pneumonia
weather and caught a nasty-sound-
ing cough. Immediately I put Jack
to bed and started treatment with
Smith Brothers' Cough Syrup. It
soothed and relieved him. The cough
seemed to melt away. In the morn-
ing there wasn't a sign of a cough
left." Mrs. W. Roby, 13608 Emily
Street, Cleveland, O.

